

CATHOLIC SCHOOLS GUIDE 2022

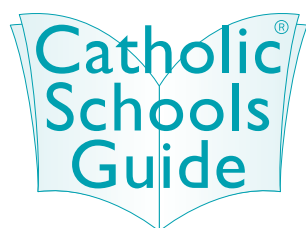
MELBOURNE
SECONDARY
SCHOOLS
EDITION

BUILDING RESILIENCE



Contents

Feature Editorials	Index	Locations
10	14	15
College Presentations	Integrate AV Competition	College Presentations
16	28	30



Catholic Schools Guide is an independent publication published by Catholic Schools Guide Pty Ltd. The contents of Catholic Schools Guide are copyright and may not be reproduced in any form, either whole or in part, without written permission from the publisher. The content of this publication should be used as a guide; further enquiries or questions regarding school information must be taken up with the relevant Colleges.

While every effort has been made to ensure that the information provided in this publication is accurate, the publisher of this Guide is not responsible and will not be held liable for any errors or omissions. The publisher accepts no responsibility for the information supplied or changes subsequent to the date of publication. Further, the publisher will not be held liable for the misuse of any information gained from this Guide.

This document has been produced to international environmental management standard ISO14001. Designed and Printed by Ellikon Fine Printers, Melbourne www.ellikon.com.au.

Catholic Schools Guide is distributed by CouriersPlease, a leading courier and freight service that delivers tens of millions of parcels each year.



Catholic Schools Guide

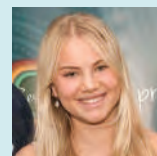
Greg Campitelli
Publishing Editor

Welcome to Catholic Schools Guide, 2022 edition. Each year, our Guide carries a different theme and this year it is **'Building Resilience'**.

In Australia, there is no greater group that has shown resilience over a longer time than Australia's First People.

The core value of our Guide rests in the continuous quest for change to search for greater equality and celebration of Australia's First People. Our design team has now permanently incorporated motifs that pay homage to our extraordinary beautiful Indigenous cultural art. This is thanks to the work of a young Wiradjuri Woman, Lua Pellegrini, who works closely with Koji, our production designer at Ellikon, to produce the stunning work you see.

Artist in Residence – Introducing Lua Pellegrini



"I am a young Wiradjuri Woman who grew up on Darug Country in Western Sydney. I am currently studying at the University of NSW completing a Bachelor of Fine Arts/ Arts Majoring in Indigenous Studies. For most of my life I have had a love for visual arts, however, my passion for Aboriginal Art only began after spending time with my local community elders Uncle Greg Simms and Uncle Wes Marne during high school.

In 2019, I graduated from Loreto Normanhurst with my HSC major work, 'Our Past, Her Future', being featured on the cover of the 2020 Catholic Schools Guide and later showcased at the Grace Cossington Smith Gallery. That same year, I was humbled to be asked to exhibit my work on the Reconciliation Wall at NSW Parliament House beginning my exhibition Our Past, Our Future in NAIDOC Week 2020 and continuing to have it exhibited till March of 2021.

I am extremely passionate about Indigenous education and have been a student volunteer at Redfern Jarjum College since 2016. I was also honoured to receive the NESA Chairperson Award for the Highest performing Aboriginal Student in HSC Aboriginal Studies for 2019. Since then, I have continued to aim to have a positive impact on the lives of other Indigenous youth through my work as a member of the NSW Health Literacy Advisory Council and as the Chairperson of the NSW Youth Advisory Council and am excited to continue my passion for Indigenous art and education through my new role as the Catholic Schools Guide Artist in Residence."

WIN an AMAZING PRIZE worth over \$9500! – The Great Lego Tower
IntegrateAV is proud to be our major sponsor of this year's competition with an incredible prize on offer. Every Catholic school in Australia is invited to enter this competition to win an All New CommBox Classic Interactive Touch Screen.

It's easy. We all love LEGO – so, build the tallest tower you can make using one single brick on top of the other. Then, register your school via the Catholic Schools Guide website.

Feature Writers

If there is one true learning the global pandemic has taught us is about the importance of being resilient. Huge thanks to our feature writers Ashley de Silva, CEO of mental health service ReachOut; Alisha Min at The Resilience Project; the team at Be You; experienced classroom teacher Donna Smith; and Integrate AV's Lindsey Davis: their features are thought-provoking reading.

Online Platforms

Need more information? Check out our brand new website at catholicschoolsguide.com.au where you will find videos posted from each school, Open Day listings, great articles on education and much more. Please join our growing community at facebook.com/CatholicSchoolGuide where you will find terrific tips and news feeds.

Facts About the Guide

The Colleges choose to advertise in the Guide, but of course there is no compulsion to do so. Importantly, the Guide is distributed free to families via the Primary School network. It is also available at most parishes and many childcare centres. The Guide is put together by a dedicated team. I am especially grateful to our sub-editor, Master of Applied Linguistics, Stephen Campitelli; senior production manager, Kristy Nimmo; and the design team at Ellikon – Phil and Koji – we simply could not put this magazine to press without their professionalism.

University Destination Data

On each school's page you will find 'Uni Offers' this refers to the % of Year 12 first round university offers for the Class of 2020.

Caritas Australia

Catholic Schools Guide is proud to be supporting the work of Caritas Australia. All support is provided pro bono and our Guide encourages all readers to get their school involved in supporting the extraordinary work of this agency.

Dedication

This edition is dedicated to us – the survivors of the pandemic.

SchoolHouse Australia
is an education recruitment and consulting
company providing services to assist schools
throughout Australia

- **CONTRACT AND PERMANENT**
RECRUITMENT CONSULTING SERVICES

- **INNOVATIVE TOOLS**
FOR SELF-MANAGED RECRUITMENT

School House



WE **VALUE** SCHOOL RELATIONSHIPS

Our staff bring over **50 years of collective experience**
recruiting for Australian Catholic schools.

Trusting relationships have taught us to ensure all
our services attract and select quality teachers
who fit a school's ethos and culture.



WE **KNOW** TEACHERS

We also understand that **flexible, cost effective services** are
what schools require. You can choose to enlist our recruiters
to provide support and/or embed our digital tools into
your self-managed recruitment.

Benefit from **SchoolHouse's** ongoing national and international
SchoolHouse marketing, and ensure your recruitment campaigns
reach the widest audience of suitable teachers



visit www.the-schoolhouse.com.au

commBOX CLASSIC INTERACTIVE PANEL

DURABLE AND COMMERCIAL-GRADE



DIGITAL WHITEBOARD . WEB BROWSER . CLICKVIEW
COMMBOX APP STORE . COMMBOX WIFI CONNECT
VIVI BUILT-IN (SUBSCRIPTION FEES APPLY)
SMART SWITCHING FOR GUEST CONNECTIVITY
DIGITAL SIGNAGE . COMMBOX EDUCATION APPS

Google

Microsoft

canvas

Blackboard

USE TEACHING APPLICATIONS YOU ALREADY KNOW AND LOVE

Make teaching easy by allowing teacher and schools to teach with the applications they already know and love. Schools and teachers are already investing heavily into the best of breed software offered by Google Education and Microsoft Education. CommBox even integrates with Microsoft Ink, saving teachers time when using apps such as OneNote, Word etc.

commBOX
CLASSIC INTERACTIVE PANEL





POWERFUL, EASY-TO-USE TOOLS FOR TEACHERS



TWO WAY MIRRORING AND TOUCHBACK WITH AIRSERVER

Teach or present from anywhere in the room. Share content and provide instant feedback from laptops, smartphones and tablets without the need for apps or software.

 **AirServer**

4K
ULTRA HD

55" 65" 75" 86" 98"

1800 742 748 info@integrateav.com.au

a4assets.com.au

Annual assets stocktaking in schools since 1997



 1300 242 773

Accurate assets registers help with insurance, not just accounts

A for Assets offer a complete stocktaking solution for schools. Includes:

- A stocktaker to barcode and record the assets in your school
- Updating your assets register to match the assets in your school
- Comparisons of results between stocktakes and stocktake report
- Friendly help and advice at any time – even between stocktakes

Call or email us for a quote: enquiries@a4assets.com.au

A game changer for schools

Enquiry to Enrolment... solved.



The adventure begins



enquirytracker.net

Creating spaces for
children to play,
learn and grow.



DESIGN | PLAYSCAPES | SURFACING | SYNTHETIC GRASS

Delivering award-winning playscapes and outdoor learning spaces to the education sector for over 10 years, Ausplay Playscapes is committed to creating long-lasting, outdoor spaces for children to play, learn and grow.

Australian Made

With in-house fabrication and a full design and construct service, we collaborate with clients to create one-of-a-kind, iconic playscapes and structures.

Site Specific Design

Each project is tailored to work sensitively with the existing environment.

Full service

From initial design through to installation, surfacing and shade, our highly qualified and experienced team of designers, fabricators and installers ensure that every project is compliant with Australian Standards and delivered to an outstanding quality.

We cannot wait to work with you on your next project.
Get in touch and let us bring your ideas to life!



Australian CATHOLICS

Bring faith to life in your school community



Discover what an AC+ subscription can offer your school



- Education Hub access for staff, students and parents
- Archive of 1000+ articles searchable by curriculum topic, age group, common theme and resource type. Classroom activities, prayers and liturgy ideas.
- Quarterly magazine to give to parents and staff
- License to use content and resources in RE and faith formation
- Teacher's Forum – share resources, ideas and experiences
- Access to exclusive webinars
- Faith-focused articles for your school newsletter
- AC+ subscriber e-newsletter
- Inclusion in the School Open Day Calendar
- Opportunities for your students to have a voice

More than
1 in 3
Catholic
schools has a
subscription

TO SUBSCRIBE

(and for schools to see the special bulk rates) GO TO:

www.australiancatholics.com.au

Connect with us @AUSCATHS

Danihers
facility
management



OUTSOURCING YOUR FACILITY MANAGEMENT WILL OFFER YOU GREATER FLEXIBILITY, ACCESS TO BEST PRACTICES, IMPROVED QUALITY AND IT WILL ALSO REDUCE YOUR COSTS

Facility Management specialist in:

- Grounds & Sporting Oval Management
- Garden Design & Daily Maintenance
- Property Maintenance
- Cleaning Services
- Security Services
- Sustainability Management
- HR & Transitional Management
- Essential Services Management
- Auditing, Property Compliance & Risk Management
- Project Management

"Communication is a key to a successful professional relationship and this is evident between our College and the staff of Danihers. Of course we demand high cleaning standards in such a large, diverse and complex site and Danihers have never let us down in this important and fundamental regard"

Brian Hanley
Principal, St Monica's College, Epping

"We approached Danihers because the complexity of managing and supporting cleaning staff who were so frequently working outside of school hours was becoming exceedingly challenging and time-consuming. From the initial conversations through to our current arrangements, the team at Danihers have been professional and most importantly, they were quick to align with our College's values and priorities. Their proactive care for our learning spaces, staff areas and boarding community has been greatly appreciated, and their efforts to ensure that our existing staff were grandfathered into the new arrangement gave us great peace of mind. The staff who now work on our site feel like part of our community. We have great lines of communication, and they participate in the daily life of the school as if we are all one organisation"

Kate Fogarty
Principal, Assumption College

1300 559 409 www.danihers.com.au



Three flexible, cost-effective keying solutions

Changing organisational structures, the increased use of contractors, temporary and mobile workers are putting enormous pressure on those responsible for the security in a building or on a site. Designed with this in mind, ASSA ABLOY Opening Solutions offers three keying platforms based on your business needs; a mechanical, an electromechanical and a purely electronic.

Please contact ASSA ABLOY Opening Solutions to find out more about **PROTEC²**, **PROTEC² CLIQ** and **eCLIQ** via the QR code below.



SCAN HERE to register your interest
or for more information visit:
assaabloyopeningsolutions.com.au



Experience a safer
and more open world

ASSA ABLOY
Opening Solutions

Tackling cyber education differently

Get on board with Australia's favourite cyber education solution for your upper primary children!

DiGii
SOCIAL

What is DiGii Social?

A content-rich, AI powered platform that provides children with live feedback and educates on every keystroke.



For teachers it couldn't be simpler. Students play and interact on their secure platform, teachers have full visibility of all interactions on the educator platform, and artificial intelligence steps in whenever necessary to guide children towards making better and safer choices online. Not only do we educate children, but we also educate parents with their own library of learning.

- ✓ Curriculum and protective behaviours aligned
- ✓ Evidence-based
- ✓ Easily implemented
- ✓ Creates positive behaviour change

"DiGii Social provides an authentic and meaningful experience for our Years 5 and 6 students to learn the skills of digital citizenship in a safe and supported manner"

Katie, Head of Junior School, Perth College



Contact us today to organise an obligation-free demonstration:

✉ hello@digiionline.com

🌐 visit digiisocial.com

**14 Day
FREE
TRIAL**



We are your partner in delivering quality education.

Education expertise

As Advisors to 120+ Catholic and Independent Schools and colleges, we are recognised throughout Australia as one of the leading providers of audit, business, financial and tax services. Get in touch with us, for all your business and personal wealth needs.

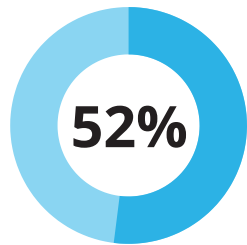
Audit • Tax • Advisory

nexia.com.au

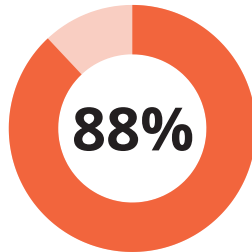
e: info@nexamelbourne.com.au



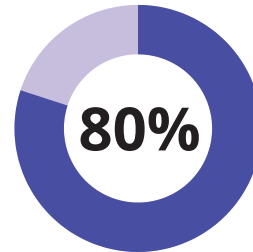
IS YOUR SCHOOL TAKING RISKS WITH EXCURSION RISK?



of schools rate their excursion risk assessments as **fair, poor or very poor**.



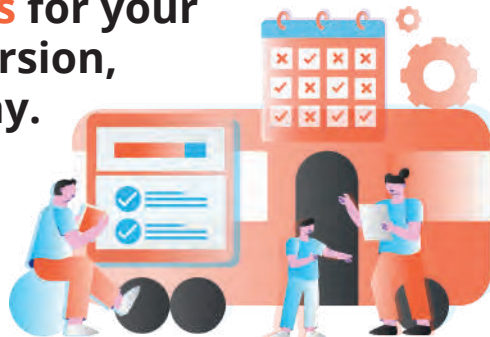
of schools **do not train their teachers** on excursion risk management.



of excursions **require multiple amendments** to risk assessments prior to approval.

WITH SAFEEXCURSIONS, OVER **70%** OF EXCURSION RISK ASSESSMENTS ARE **COMPLETED WITHIN A DAY**.

To learn more about **Better Risk Assessments** for your next school excursion, get in touch today.



www.complispace.com.au/safe-excursions



PRINTED SCHOOL MARQUEES AND FLAGS FOR ALL HOUSES AND SPORTS

At Mountain Shade we pride ourselves on quality. We believe everyone should have the ability to protect themselves from the elements and show off while doing so. Our Marquees come in an array of sizes to meet your needs. Mountain Shade products are Australian Standard Approved, meeting your Duty of Care and putting your mind at ease.

We deliver nation wide, so call us to enquire!

sales@mountainshade.com.au | 88 Latitude Blvd, Thomastown, VIC 3074



Building Resilience

By Ashley de Silva,
CEO of ReachOut

Setbacks, problems and failures are an inevitable part of life. Since 2020, COVID-19 has had a huge impact on the lives of students, parents and teachers across Australia. We have had to adapt to all the changes to our normal routines and activities and learn to cope with things like online learning, study stress and uncertainty about the future.



ReachOut is a mental health service that's been providing support for young people, their parents and schools for more than 20 years. During this time we've heard from countless young people, parents, teachers, school staff and mental health professionals about what helps them to stay happy and well. A key theme we've heard again and again is the importance of *resilience* – a theme that's backed up by science.

The term 'resilience' actually comes from materials in science and engineering. It relates to how much pressure and stress different materials can withstand before being compromised in some way. When we use the term 'resilience' at ReachOut, we're talking about the ability of people and communities to adapt and keep going when faced with adversity. Resilience helps us not only to recover from stress, but to excel in life – be that in the classroom, in the staff room or at home.

An example that's commonly used to illustrate resilience is a rubber band, which can be put under stress by being stretched and pulled in all directions, without breaking, then reverts to its original shape as soon as the pressure or stress is removed.

Individuals who are resilient share certain traits. These include emotional awareness, the ability to regulate their emotions, to maintain an optimistic outlook, to be flexible in their thinking and to display empathy towards others. They also believe that they can achieve things and are willing to seek help when needed.

Significantly, all of these traits can be learnt not just by students, but also by teachers, parents and others in the school community. Resilience is something we can *all* continue to build and cultivate throughout our lives.

Having a resilient school community helps reduce the impact that negative situations can have on individuals and those around them. We know this may feel like a challenging goal, though, and it's not always clear how we can achieve it in practice.

Two practical approaches that teachers, parents and young people can use to develop resilience are *encouraging help seeking and sharing stories*.

A vital part of building resilience is learning to recognise when we need additional support and then seeking help. We all need help at times. Resilient people know when to ask for help and will reach out to others when they're going through a tough time.

Making sure that school staff, parents, teachers and young people know where to seek help when it comes to their mental health is key. This could be having posters up at school about mental health support services, providing information about mental health support in school newsletters or having regular conversations about support services.

Critically, there is no one-size-fits-all solution when it comes to mental health support. It's helpful to offer different options, including connecting with a professional in person, calling a helpline, talking to someone you trust, or engaging with an online service such as ReachOut.

Another effective way to build resilience across the school community is to find ways, both formally and informally, to share people's stories of experiencing and overcoming knockbacks and failures. This can include giving students a platform to share their stories with each other, but also encouraging them to hear their parents' and teachers' stories, too.

These practical examples are thought starters for ways in which your school community can encourage and promote resilience to ensure that everyone can benefit from this vital mental health tool.

For more information and support, visit: [ReachOut.com](https://reachout.com.au/youth) (youth), [ReachOut.com/Parents](https://reachout.com.au/parents) and [ReachOut.com/Schools](https://reachout.com.au/schools).

If you need further support when it comes to your mental health, you can call LifeLine on 13 11 14 or Kids Helpline on 1800 55 1800, contact your GP, or call 000 in an emergency. At [ReachOut.com](https://reachout.com.au) you can find articles, tips, online communities and pathways to further support.

The key protective factor against stress: Four Fundamental Pillars of Resilience

By Donna Smith

Teacher attrition has long been a major concern not only for Australia but also other economically developed countries. In fact, in Australia, almost half of the beginning teachers employed resign after just five years of practice (Hong, 2012). This is problematic as it has compounding effects. Firstly, the psychological pain and suffering endured by the individual teacher (Dorman, 2013) can compromise their mental health; secondly, there is a negative impact on student learning outcomes (Arnup & Bowles, 2016); and lastly, the loss of highly trained professionals creates significant challenges in recruitment and replacement (Howard & Johnson, 2004).



In Australia, there are almost 270,000 teachers and 4 million students in 9,500 schools (ABS, 2021). This is almost 1 in 6 people with a direct interest in Australian school life. Education is everybody's business and is too large to be ignored or not considered. It is, therefore, vital we preserve and get better at retaining teachers as they have a far-reaching influence on shaping our nation (Heffernan, 2019) and are drivers for student success (Hattie, 2009).

The high attrition rate among beginning teachers is not only important in terms of addressing a shortage of teachers (Kim, 2019), there is a real drive to create more sustainable practices so teachers can operate from a positive mindset. Mental wellbeing of teachers is at the forefront of teacher attrition with research making it apparent that teacher resilience and burnout contribute to teachers leaving the profession.

Because burnout is caused by prolonged periods of stress it is then only natural that steps are taken in managing stress to keep it at a sustainable level. Susan Bruce, associate professor at Northeast Ohio Medical University, says that it is better and easier to prevent burnout than to cure or resolve it. A key to this lies in resilience building. According to Susan Beltman, Associate Professor for the School of Education at Curtin University, resilience defines an individual's capacity to continue, adapt and thrive despite experiencing adversities, such as unexpected changes, critical life events and job stress. Importantly, rigorous evidence-based research (Hong, 2012; Beltman et al., 2011; Arnup & Bowles, 2016; Howard & Johnson, 2012) has outlined four elements underpinning resilience known as the 'four fundamental pillars': Confidence, de-personalisation from unpleasant events, pride and ownership over accomplishment, and strong connections with others.

Confidence: Belief in one's abilities is the cornerstone of resilience. Research demonstrates that confident educators are less likely to manifest burnout curbing their intention to leave the classroom (Hong, 2012; Howard & Johnson, 2012). Furthermore, being confident and having a strong self-belief in one's abilities not only builds resilience it generates fulfilment, motivation and a sense of joy.

De-personalisation: At times, teachers may feel responsible for events that are out of their control. Resilient individuals understand the importance of creating strong and healthy personal and professional boundaries enabling them to de-personalise from adversity and unpleasant events and this most certainly enhances teacher resilience (Howard & Johnson, 2012).

Pride and ownership: We need to celebrate our wins. It is easy to fall into the trap of playing off small accomplishments and not recognising the efforts put forth in achieving such wins. Resilient people are proud, celebrate their accomplishments and take ownership of all goals achieved, no matter how trivial, which fosters high resilience.

Strong connections: Resilience thrives on healthy and strong networks. These networks need to be fostered in professional and personal life. Healthy relationships with family and friends can influence an individual's professional career. Therefore, a 360-degree approach to healthy relationships is paramount to building and maintaining resilience (Bruce, 2009).

It's important to know that resilience is not static, it can wax and wane depending on the circumstances. To build and maintain resilience through adverse times individuals need to be kind to themselves, practice, and persevere. Resilience can grow over time and it is now,

especially during these uncertain times, we need to strengthen our resilience more than ever. The four fundamental pillars offer a great starting point to build resilience not only to survive through adversity but to thrive.

References

- Australian Bureau of Statistics [ABS]. (2021). *Schools Australia*. <https://www.abs.gov.au>
- Beltman, S., Mansfield, C., & Price, A. (2011). Thriving not just surviving: A review of research on teacher resilience. *Educational research review*, 6(3), 185-207.
- Bruce, S. (2009). Recognizing stress and avoiding burnout. *Science direct*, 1(1), 57-64.
- Hattie, J. (2009). *Visible learning: A synthesis of 800+ meta-analyses on achievement*. Routledge.
- Heffernan, A., Longmuir, F., Bright, D., & Kim, M. (2019). *Perceptions of teachers and teaching in Australia*. Monash University.
- Hong, J. (2012). Why do some beginning teachers leave the school, and others stay? Understanding teacher resilience through psychological lenses. *Teachers and teaching*, 18(4), 417-440.
- Howard, S., & Johnson, B. (2004). Resilient teachers: resisting stress and burnout. *Social Psychology of education*, 7, 399-420.
- Kim, L. E., Jörg, V., & Klassen, R. M. (2019). A meta-analysis of the effects of teacher personality on teacher effectiveness and burnout. *Education psychology Review*, 31, 163-195.
- Mansfield, C., Beltman, S., Price, A., & McConney, A. (2012). "Don't sweat the small stuff." Understanding teacher resilience at the chalkface. *Teaching and Teacher Education*, 28(3), 357-367.

Resilience: A whole-of-school tonic for tough times

By Alisha Min,
The Resilience Project

In today's times of constant change and uncertainty, school communities have been hard hit. Schools have been forced to quickly pivot with loungerooms replacing classrooms and staffrooms, and parents juggling working from home while helping children adjust to virtual lessons.



Children of all ages have had face-to-face connections replaced with screen time. They're missing the social and emotional development which comes from connecting with their peers through school excursions, sports, arts and cultural activities, plus celebrating graduation and birthday milestones with their peers.

Building resilience in students, teachers and families has never been more vital.

At The Resilience Project, we see resilience as the ability to better bounce back from challenging or stressful times. To help people build resilience, we deliver emotionally engaging programs which step-through a range of evidence-based, practical wellbeing strategies. When practised, the research tells us these strategies elicit positive emotions, and this in turn leads us to happier and more resilient lives.

The statistics around mental health in Australia, particularly surrounding our children, are startling. They tell us that one in four adolescents will experience mental health problems this year, and of these children, nearly two thirds of them will not seek help. Additionally, recent surveys conducted by youth mental health foundation, Headspace, revealed 75% of young people said their mental health has deteriorated due to Covid-19 upheavals, with incidences of self-harm and anorexia particularly rising.

With these confronting figures in mind, it is clear that primary and secondary schools play an integral role in improving the mental health of our country's youth. The Royal Commission into Victoria's Mental Health System in 2021 revealed that primary and secondary schools are settings with the highest unmet need of mental health support.

Programs in schools with a focus on developing positive emotions are a crucial step in the right direction.

Delivering positive strategies in schools is at the heart of what we do at The Resilience Project, and so far, we have delivered wellbeing programs to over 1,500 schools and early learning centres.

Our Education Programs support mental health in the classroom, staffroom and family home through presentations, student curriculum, teacher and parent resources and digital content. Research shows that the more positive emotion you experience, the more resilient you will be. For that reason, our Education Programs focus on key pillars that have been proven to cultivate positive emotion as building blocks to resilience:

- **Gratitude:** Paying attention to the things we have right now, and not worrying about what we don't have. We practise gratitude by focusing on the positives.
- **Empathy:** Putting ourselves in the shoes of others so we feel what they feel. We practise empathy by being kind and compassionate to other people.
- **Mindfulness:** Our ability to be calm and present in the moment. We practise mindfulness by slowing down and concentrating on one thing at a time.
- **Emotional Literacy:** Our ability to label our emotions, which helps us to soften negative emotions and find positive ones. We practise emotional literacy by labelling our emotions as we experience them.

As an organisation, we are driven by our desire to make a difference to young people's emotional wellbeing. Just like adults in workplaces, school curriculums and cultures have a big influence on young people

and their overall wellbeing. To make sure our programs are hitting the mark, we underwent an independent research evaluation with The University of Melbourne to measure the impact of our schools partnership program. Recent results show promising evidence of improvements in the participating students' self-esteem and confidence, their relationships at school and home, their ability to express emotions and use daily gratitude strategies, and the creation of supportive classroom environments.

Schools are also telling us that these programs are making a positive difference.

"As a small school, we are so very grateful to be able to participate in the Digital Program. Our students love everything about the program, and it has provided staff with a new language for supporting students and their families".

Liz Trewick, Principal, Our Lady of Sacred Heart. (Elmore, Victoria)

We are delighted that Catholic schools already make up over 20% of the 378 schools participating in our extensive Partnerships School across Australia.

The Resilience Project delivers emotionally engaging programs and provide evidence-based, practical wellbeing strategies to build resilience. For more information about The Resilience Project go to: theresilienceproject.com.au

How school leaders can foster a culture of resilience in their school

By the Be You Team

Much has been said recently about the importance of developing resilience in young people, and the role of educators to teach these skills. What is less often discussed is the role that school leaders play in fostering a culture of resilience, for both their staff and students. As we work to recover from the coronavirus pandemic, it has never been more important to involve everyone at learning communities in supporting mental health including resilience, so they achieve the best possible outcomes.



What is resilience?

- Resilience is the ability to manage life's ups and downs and is key for developing positive mental health and wellbeing.
- A child or young person's resilience is supported by a range of conditions including their social and emotional skills and positive relationships.
- When a child or young person feels supported, they are in a better position to draw on their social and emotional skills and be resilient.
- The ability to be resilient is developed over time.

Resilience is often described as being like a muscle – the more we use and practice with it in a supportive environment, the stronger it becomes. This is true for both educators and the young people they teach.

Resilience in young people

Providing young people with opportunities to practise their resilience can take the form of taking 'safe risks' in a supportive environment – public speaking to groups, rock climbing on camp, learning a new skill in class and encouraging them to persist when it doesn't come easily.

At the same time, it's important to include wellbeing activities in the curriculum and provide students with an opportunity to try out strategies for self-care, such as mindfulness, and explore resources, websites and organisations that provide support, such as headspace, Kids Helpline, ReachOut and Beyond Blue.

We know that young people come to school from a wide range of backgrounds and experiences. Including families is vital in promoting a sense of community and belonging. School leaders may like to consider thinking more about 'parent engagement' rather than 'parent involvement' – reframing it so parents are included in how and what their child learns, especially in skills that support resilience. Parents and carers can extend opportunities for young people to practise these skills, including asking for help.

The last two years have highlighted the importance of connection. For many people this time has been incredibly challenging, and wellbeing, resilience and being kind to oneself have become more important than ever. The strategies young people learn at school are often the strategies they will draw on as adults, when faced with work stress, relationship issues and family changes.

When school leaders and educators create a culture of connection – where it is safe to tell someone you need help and where young people are encouraged to persist when they find something challenging – they are teaching life-long skills. This can feel like a big task for schools, but if we break it down, it essentially means a young person would say, "I know my teacher cares, I know who I can talk to when I need help".

Staff resilience

Positive school culture, collegial support and a sense of community are important factors in supporting resilience among educators. What creates a positive school culture is as varied as the schools across Australia, but can include a sense of optimism and belonging, and the freedom to express ideas and offer opinions.

Committing to regular wellbeing sessions and social activities as a staff group and being deliberate to include genuine praise and recognition of staff are also important.

The **Be You** national mental health framework (<https://beyou.edu.au/>) is a good place for school leaders to start when exploring wellbeing topics and resources for their staff.

A positive school culture is the responsibility of everyone in the school, not simply the leaders. Those small actions educators take like a hello, a coffee together, touching base during report writing or exam marking, can collectively help strengthen the sense of community that supports resilience.

Being part of a connected school community can assist us to feel safe to reach out for support and receive support from people who notice we are not travelling as well as we usually would.

The Be You team

Be You is a national initiative that equips educators to support the mental health and wellbeing of children and young people from birth to 18 years. Be You is delivered by Beyond Blue, in collaboration with Early Childhood Australia and headspace. Go to beyou.edu.au to learn more.



Index

A list of Catholic Secondary Colleges featured in the 2022 Guide.



Academy of Mary Immaculate
88 Nicholson Street, Fitzroy VIC 3065



Aquinas College
46 Great Ryrie Street, Ringwood VIC 3134



Assumption College, Kilmore
Sutherland Street, Kilmore VIC 3764



Ave Maria College
14-22 Vida Street Aberfeldie VIC 3040



Caroline Chisholm Catholic College
St John's & Sacred Heart
204 Churchill Avenue, Braybrook VIC 3019
Christ the King
65 Churchill Avenue, Braybrook VIC 3019



CRC Sydenham
380 Sydenham Road, Sydenham VIC 3037



De La Salle College
Tiverton Campus
1318 High Street, Malvern VIC 3144
Holy Eucharist Campus
1241 Dandenong Road, Malvern East VIC 3145
Kinnoull Campus
9 Northbrook Avenue, Malvern VIC 3144



Emmanuel College
Vermont South Campus
503 Springvale Road, Vermont South VIC 3133
Burwood Campus
285 Warrigal Road, Burwood VIC 3125



Genazzano FCJ College
301 Cotham Road, Kew VIC 3101



John Paul College
McMahons Road, Frankston VIC 3199



Kilbreda College
118 Mentone Parade, Mentone VIC 3194



Kolbe Catholic College
Lysterfield Drive, Greenvale Lakes VIC 3059



Loyola College
325 Grimshaw Street, Watsonia VIC 3087



MacKillop College
Russell Street, Werribee VIC 3030



Marcellin College
160 Bulleen Road, Bulleen VIC 3105



Marian College
196 Glengala Road, Sunshine West VIC 3020



Marymede Catholic College
60 Williamsons Road, South Morang VIC 3752



Mater Christi College
28 Bayview Road, Belgrave VIC 3160



Mazenod College
Kernot Avenue, Mulgrave VIC 3170



Mercy College
760 Sydney Road, Coburg VIC 3058



Mount Lilydale Mercy College
120 Anderson Street, Lilydale VIC 3140



Our Lady of Mercy College (OLMC)
52 Cape Street, Heidelberg VIC 3084



Parade College
Bundoora Campus
1436 Plenty Road, Bundoora VIC 3083
Preston Campus
8 Clifton Grove, Preston VIC 3072



Penola Catholic College
Senior Campus
29 Gibson Street, Broadmeadows VIC 3047
Junior Campus
35 William Street, Glenroy VIC 3046



Sacré Cœur
172 Burke Road, Glen Iris VIC 3146



Salesian College, Chadstone
Bosco Campus
10 Bosco Street, Chadstone VIC 3148
Mannix Campus Yr 9
Cnr Kelly Street & Swanson Crescent,
Chadstone VIC 3148



Salesian College, Sunbury
1 Macedon Street, Sunbury VIC 3429



Santa Maria College
50 Separation Street, Northcote VIC 3070



Siena College
815 Riversdale Road, Camberwell VIC 3124



Simonds Catholic College
St Mary's 7-9 Campus
273 Victoria Street, West Melbourne VIC 3003
St Brigid's 10-12 Campus
20 York Street, Fitzroy North VIC 3068



St Aloysius College
Main Campus
31 Curran Street, North Melbourne VIC 3051
Torquay Campus
41 Price Street, Torquay VIC 3228



St Bede's College
Mentone Campus
2 Mentone Parade, Mentone VIC 3194
Bentleigh East Campus
156 Bignell Road, Bentleigh East VIC 3165
Phillip Island Campus
73 Beachcomber Avenue, Smiths Beach VIC 3922



St Bernard's College
41 Rosehill Road, West Essendon VIC 3040



St Joseph's College, Ferntree Gully
5 Brenock Park Drive, Ferntree Gully VIC 3156



St Mary's College
Edmund Rice Campus
11 Westbury Street, St Kilda East VIC 3183
Presentation Campus
187 Dandenong Road, Windsor VIC 3181



St Monica's College, Epping
Years 10-12 Campus
16 Davisson Street, Epping VIC 3076
Years 7-9 Campus
400 Dalton Road, Epping VIC 3076
Country Campus (Ostia)
Falls Road, Strath Creek VIC 3658



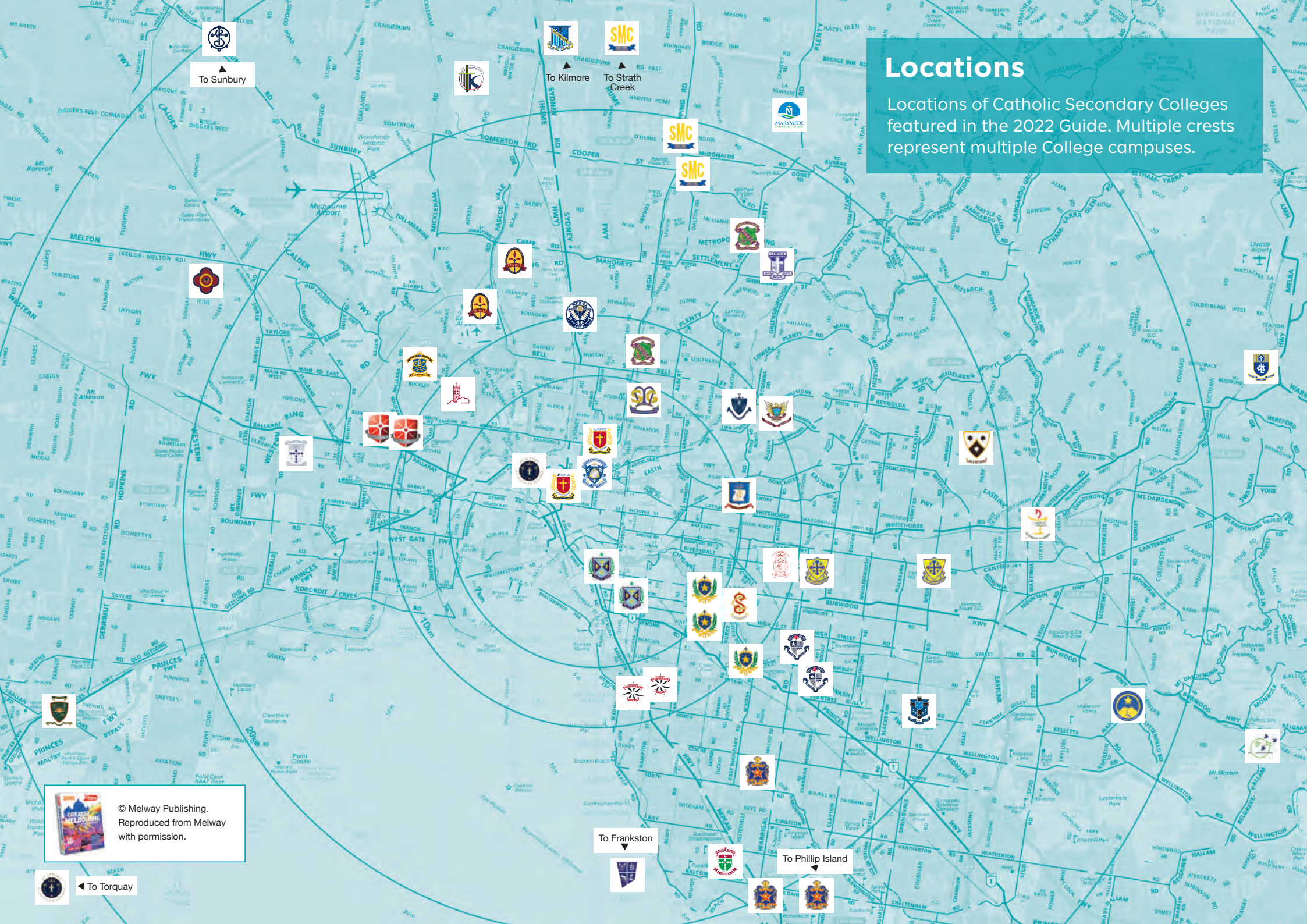
Star of the Sea College
Main Campus
Martin Street, Brighton VIC 3186
Year 9 Campus
Anzac House, North Road Brighton VIC 3186



Whitefriars College
156 Park Road, Donvale VIC 3111

Locations

Locations of Catholic Secondary Colleges featured in the 2022 Guide. Multiple crests represent multiple College campuses.



▲
To Sunbury

▲
To Kilmore

▲
To Strath Creek

▼
To Frankston

▼
To Phillip Island

◀
To Torquay

© Melway Publishing.
Reproduced from Melway
with permission.



Academy of Mary Immaculate

Est. 1857

'The city school for girls'

KEY INFORMATION

Address 88 Nicholson St, Fitzroy VIC 3065
Telephone 03 9412 7154
Website academy.vic.edu.au
Principal Sr Mary Moloney RSM
Enquiries Kerri Ruff
Email registrar@academy.vic.edu.au

WHAT MAKES US SPECIAL

Academy of Mary Immaculate is the oldest girls' secondary college in Victoria. We educate young women of integrity and purpose with a contemporary outlook grounded in a strong sense of social justice. The Mercy values that shape our school's daily life sustain our commitment to girls' education, while our learning environment supports the important role young women will play in the future of Australia and the world.

Beginning with our Year 7 immersion program, each student grows independence and takes responsibility for her learning. The program includes Orientation Day, House sports, Big Sister/Little Sister program and the Year 7 Camp.

From our location beside the Carlton Gardens, we conduct classes in Melbourne's premiere learning and cultural centres – including the NGV, Melbourne Museum, ACMI, and nearby world-class universities. Our Year 9 cross-curricular program 'Synergy' requires students to apply knowledge across all subject areas as they investigate an immersive learning project and produce robust research papers, which they present to the school community.

We match curriculum with extension and support programs and co-curricular subjects to help students pursue personal goals tailored to university, TAFE, apprenticeships, traineeships and employment.

BUILDING RESILIENCE

Academy girls accept the certainty of change as the world shifts to multimodal methods — in learning, living and working. With personal fortitude and integrity, our girls have used their inherent expertise to humanise the pandemic and engage with each other to augment their learning goals. Finding, being part of, and creating solutions in response to the COVID impact has been a significant 'driver' for our school community. At the invitation of local medical practitioners, Academy's prestigious AMICCI choir performed at the Royal Exhibition Building to support the Melbourne community as it received COVID vaccinations. The girls are such strong singers that their choral voice can be clearly heard from behind the face masks each student wears. Academically, our students have used a range of digital technologies to take control of their education whilst collaborating on scientific projects during remote learning periods. Year 7 students used 3D modelling software to show how a 'sharps cutter' prototype could cut the metal needle from a syringe safely so that both pieces could be disposed of and recycled effectively. Our Year 10 Physics students mastered the scientific process — including observation, data collection, analysis and interpretation — via the Google education suite, virtual classrooms, and statistical and design software. In spite of the social isolation and disrupted education settings, our students demonstrated their integrity and purpose by supporting each other to respond to a complex situation and apply their knowledge and values across disciplines.



OUR FIRST PEOPLES

Academy of Mary Immaculate acknowledges the Wurundjeri – Woiwurrung people of the Kulin Nation as the Traditional Owners of the land on which our school is placed.

We are inspired and nurtured by the wisdoms, spiritualities and experiences of our First Nations Peoples. Together we work actively for reconciliation, justice, equity and healing.

VISIT US IN 2022

Talk & Tours run regularly throughout the year and are guided by the Academy Principal and student ambassadors. Please refer to CSG listing or www.academy.vic.edu.au/enrolments/talk-tour

QUICK FACTS

- Oldest girls secondary school in Victoria est. 1857
- First Mercy school established in Victoria
- 24 Scholarship/Guarantee Entry offers for 2022
- Academy Dux received a Tuckwell Scholarship to ANU
- Partnering with Business to accelerate STEM Careers
- International Women's Day – Politics of Science, featuring Alumnae
- Students representing Victoria in Hockey and Beach Volleyball
- Student Debater received top honour in DAV Competitions
- Radical Women Forum: promoting mentorship with trailblazing women
- Year 9 Synergy: cross curricular program focused on Melbourne identity

GENDER

Girls

YEAR RANGE

Yr 7 - 12

ENROLMENT

676 students

YEAR 7

104 students
4 classes

LANGUAGES

Italian, French & Japanese

FEES 2022

Yr 7 \$8,850
Yr 12 \$9,255

VCE UNITS 3/4

30

VET

Yes

UNI OFFERS

91%

CONNECT VIA

Website: academy.vic.edu.au/enrolments



Aquinas College

Est. 1961

*'Illuminare et Ardere -
To light up and be on fire'*

KEY INFORMATION

Address	46 Great Ryrie St, Ringwood VIC 3134
Telephone	03 9259 3000
Website	www.aquinas.vic.edu.au
Principal	Mr Darren Atkinson
Enquiries	Madeleine Kalla
Email	principal@aquinas.vic.edu.au

WHAT MAKES US SPECIAL

Inspired by Gospel values and mindful of our Catholic identity, our Vision is to ignite the fire of learning and shine as a beacon of excellence, hope and love in the world'. Our College motto, 'Illuminare et Ardere', is interpreted by us to mean, 'To Light Up and Be on Fire'.

At Aquinas College we are committed to educating our students to take their place in the global community and to view the world from multiple perspectives with an awareness of God in their lives guided by our College values – spirituality, belonging, perseverance, compassion, stewardship and justice. We closely connect pastoral care to learning as students who feel safe at school are inclined to learn more successfully and take greater advantage of school life and its many benefits.

We are proud of our expert staff, committed to enhancing the learning experience, encouraging differentiation and promoting individual resourcefulness. Our aim is to assist students to embrace and harness their unique gifts by providing a rich, diverse and contemporary learning framework in the Middle Years. A comprehensive range of subject choices provide an opportunity to pursue specific areas of interest as students proceed to the Senior Years. Students seeking University entrance have access to a wide variety of subjects in the Victorian Certificate of Education (VCE), whereas those interested in exploring vocational pathways have the Victorian Certificate of Applied Learning (VCAL) and a broad range of Vocational Education and Training (VET) certificates available.

Students can select courses by interest and ability from Year 10 as well as accelerate in VCE subjects and are encouraged to develop as critical and independent thinkers. Aquinas has a comprehensive co-curriculum that encourages involvement, leadership, community spirit, physical engagement, artistic endeavour, teamwork and Social Justice.

The College is a fully accredited member of the Council of International Schools and a major secondary campus for St Mary's College for the Deaf.

BUILDING RESILIENCE

Rarely has the need for resilience been more apparent than over the past two years. As the world changed, our students were called upon to demonstrate resilience and to persevere with their learning under very unusual circumstances.

The Aquinas staff were amazing in trying to ensure that nobody was left behind as learning moved online and, with ongoing support from across the Aquinas College community and the determination of our student leadership, we were all encouraged to embody the College's Core Values of Belonging and Perseverance.

Building our capacity of resilience has taken the courage and the connectedness of the community as a whole and will help prepare our students as they navigate through life.



OUR FIRST PEOPLES

Aquinas College acknowledges the Wurundjeri People as the traditional owners of the land on which our school is placed.

We are inspired and nurtured by the wisdom, spirituality and experiences of our First Nations Peoples. Together we work actively for reconciliation, justice, equity and healing.

VISIT US IN 2022

Open Day is being held on Sunday 20 March, 2022, and College tours occur once a month.

At Aquinas we want every student to find opportunities to embrace their spirit and discover their place.

QUICK FACTS

- Accredited member of CIS, among the top 20% of education facilities globally.
- A large campus set over 16 hectares.
- Diverse curriculum and vocational pathways.
- Learning spaces designed to enhance visibility and collaboration.
- A dedicated, fully equipped Science precinct.
- Multiple sporting fields and a fully equipped gym.
- 300-seat theatre and two smaller theatrettes.
- An industry standard Hospitality Trade Training Centre and Cafe.
- Experiential education program for Year 9 students.
- Catholic Social Teachings embedded across curriculum and co-curricular programs.

GENDER

Co-educational

YEAR RANGE

Yr 7 - 12

ENROLMENT

1,700 students

YEAR 7

300 students
12 classes

LANGUAGES

French & Chinese

FEES 2022

Yr 7 \$7,680
Yr 12 \$7,680

VCE UNITS 3/4

36

VET

Yes

UNI OFFERS

76.2%

CONNECT VIA





Assumption College Kilmore

Est. 1893

'Quae Supra Quaere – Seek the things that are above'

KEY INFORMATION

Address Sutherland St, Kilmore VIC 3764
Telephone 03 5783 5000
Website assumption.vic.edu.au
Principal Kate Fogarty
Enquiries Kylie Lawtey
Email registrar@assumption.vic.edu.au

WHAT MAKES US SPECIAL

Our community, students, staff, Alumni and parents make Assumption College special and unique. Our College is welcoming and inclusive and accepting of all faith backgrounds. Our school seeks to provide a genuine, safe and rewarding experience.

The adults and adolescents of our community are committed to a mindset of ongoing improvement, and see life-long learning as the cornerstone of our development. We are proud to support and encourage others to achieve their potential, and know that partnerships with families, local schools, and other community and educational organisations enrich us, and help us provide even greater opportunities for all. The way we deliver our curriculum is also different. The Year 7 transition experience enables students to engage with learning domains across all areas of the Victorian Curriculum. It provides students, parents and teachers with a year of learning to better understand their goals, interests and capacity for future learning.

Our Year 7 Quaere program creates opportunities for stronger connections and engagement with learning. Our programs and activities have been designed to educate for the future within a fast-paced, ever-changing world.

The traditional four-year experience across Years 7-10 has been replaced with a ground breaking 'myMAP' program. This is a program, aimed to foster Mastery, Autonomy and Purpose to enable a culture of connection, ownership and engagement with learning.

The flexibility of myMAP empowers students who identify their goals early to experience deep learning in their chosen subjects. It also encourages those who have not decided on a path to continue with a broader and highly effective curriculum and encourages students to be proud of their achievements.

BUILDING RESILIENCE

Assumption College builds resilient students by preparing them to be strong, confident and decisive leaders of the future. We believe in a growth mindset where students know that they are in control of their own destinies and that through hard work and perseverance – especially after making mistakes – they will become smarter and succeed academically.

Assumption College holds true to the Marist pillars, providing an inclusive learning environment with a view to prepare students for all aspects of life – continually reaching higher to achieve their potential and beyond in the spirit of our motto, Quae Supra Quaere.

myMAP ensures every child within Assumption College maximises their learning and potential in every classroom. Effective teaching and authentic learning are nurtured and constantly developed to help students achieve.



OUR FIRST PEOPLES

Assumption College Kilmore acknowledges the Taungurung People as the traditional owners and custodians of the land on which our school is placed.

We are inspired and nurtured by the wisdoms, spiritualities and experiences of our First Nations Peoples. Together we work actively for reconciliation, justice, equity and healing.

VISIT US IN 2022

Our College welcomes you to join us throughout the year for a tour.

Meet and see our students in action at our Open Evening 21 March. Visit our website for more details.

QUICK FACTS

- A school where students flourish, tailoring own learning journey
- Traditional four-year experience across Years 7 to 10 replaced with 'myMAP' program
- Students can set learning to their pace, targets and itinerary
- Access to hundreds of different learning pathways
- Generous school property at 100 acres
- Impressive sporting grounds and facilities
- Programs and immersions available
- 5 and 7 day Boarding
- Year 7 Quaere program creates opportunities for stronger connections
- Multi levels of care offered to help with primary school transition

GENDER

Co-educational

YEAR RANGE

Yr 7 - 12

ENROLMENT

1,340 students

YEAR 7

250 students
10 classes

LANGUAGES

French & Italian

FEES 2022

Yr 7 \$8,165
Yr 12 \$8,657

VCE UNITS 3/4

35

VET

Yes

UNI OFFERS

93%

CONNECT VIA





Ave Maria College

Est. 1963

'Striving for Truth through Love'

KEY INFORMATION

Address 14-22 Vida St, Aberfeldie VIC 3040
Telephone 03 9331 9300
Website avemaria.vic.edu.au
Principal Tanya Hutton
Enquiries Maria De Fazio
Email registrar@avemaria.vic.edu.au

WHAT MAKES US SPECIAL

When you set foot on our campus you immediately feel a sense of welcoming and belonging. The Ave Community is safe, open and supportive, and we pride ourselves on knowing and nurturing every student.

There is a real sense of community and genuine student voice in decisions. Our slightly smaller cohort sizes and compact campus mean that we get to know our students, not just in the classroom but through the myriad of co-curricular and leadership activities available.

We offer a wide range of VCE and VCE/VET subjects across all disciplines. A key feature of our academic program is the diversity of subjects available and the support for individual pathways. We work closely with families and students to address specific interests, needs and capabilities by developing bespoke learning programs that may include off-campus VET and university subjects.

Our growing Alumnae network, known as Ave Belong, is a testament to the successful community at Ave. We share and celebrate the stories of our Alumnae to encourage our current students to pursue their goals and dreams.

The diversity in pathways and achievements of our Alumnae reflects the hard work and belief instilled in our students and a legacy of the positive culture and community we uphold.



OUR FIRST PEOPLES

Ave Maria College acknowledges the Wurundjeri People as the Traditional Owners of the land on which our school is placed.

We are inspired and nurtured by the wisdoms, spiritualities and experiences of our First Nations Peoples. Together we work actively for reconciliation, justice, equity and healing.

VISIT US IN 2022

Book a College Tour in 2022 to meet our staff and students and see our dynamic learning environment.

Visit our website to book or call 9331 9308 for further information.

QUICK FACTS

- 90.75 median ATAR for our top 25% of students in 2020
- 90% of the class of 2020 were offered their 1st or 2nd University preference
- We offer International study tours to Indonesia, Italy and the USA
- Year 10 students can accelerate in VCE studies
- We run camps at Year 7 and 9 with a retreat at Year 12
- We have a Horizons program to challenge students
- We participate in SCSA sports programs
- We offer a broad range of student leadership positions
- All students study Religious Education
- We are guided by the Franciscan values of Truth, Love, Peace and Compassion

GENDER

Girls

YEAR RANGE

Yr 7 - 12

ENROLMENT

830 students

YEAR 7

140 students
5 classes

LANGUAGES

Indonesian
& Italian

FEES 2022

Yr 7 \$7,920
Yr 12 \$9,260

VCE UNITS 3/4

33

VET

Yes

UNI OFFERS

97%

CONNECT VIA



BUILDING RESILIENCE

In 2020, the College published the Ave Charter for Education (ACE). This guiding document brings together our vision for learning, wellbeing and faith, encircled by the three pillars of belong, engage and thrive.

ACE outlines our Franciscan charism, learner attributes and wellbeing skills in a user-friendly framework that invites all members of our community to build their knowledge, develop their skills and apply these to the world they live in. Whilst 'resilience' is one of our 6 learner attributes, and, therefore, an explicit focus for us, building resilience is also a driving force behind our wellbeing programs and academic programs.

Ave Maria College has a unique Mentor program which takes a holistic approach to student wellbeing. Students belong to year-level-based mentor groups and meet with their mentor teacher for daily check-ins and support. Every fortnight, mentor groups gather for an extended period where they participate in education programs and activities based on the Visible Wellbeing SEARCH framework, as well as age-relevant lessons on areas including respectful relationships, cyber safety and wellbeing practices. Throughout these sessions, students strengthen their understanding of resilience and make connections to real world scenarios in which they have shown resilience in their studies and everyday life.





Caroline Chisholm Catholic College

Est. 1997

'Many Minds, One Heart'

KEY INFORMATION

Address **St John's Campus:** (boys Yr 7 – 9)
Sacred Heart Campus: (co-ed Yr 10 – 12)
 204 Churchill Ave, Braybrook VIC 3019
Christ the King Campus: (girls Yr 7 – 9)
 65 Churchill Ave, Braybrook VIC 3019
Telephone 03 9296 5311
Website cccc.vic.edu.au
Principal Mr Robert Brennan
Enquiries Head of Admissions
Email admissions@cccc.vic.edu.au

WHAT MAKES US SPECIAL

Caroline Chisholm Catholic College is a multi-site, co-educational secondary school in Melbourne's inner west, dedicated to learning excellence in a faith filled, engaged, and supportive environment. The College offers the best of both worlds with single-sex education at Years 7 – 9 for boys at St John's Campus, Year 7 – 9 girls at Christ the King Campus, and co-educational from Years 10 – 12 at Sacred Heart Campus. We believe every student is talented and our programs offer them the chance to have academic success through our personalised learning approach as well as co-curricular and extension programs. At Caroline Chisholm Catholic College, we value faith, acceptance, compassion and excellence (FACE). These are lived daily through our many interactions. We are blessed with state of the art facilities designed specifically for the holistic development of our students. On offer are modern science labs, an on-site trade training centre, indoor swimming pool, multi-purpose sports oval, a wholly owned outdoor and environmental education facility in Meredith and a new multi-purpose hall and gym, which forms a sports precinct large enough to accommodate a growing student body. The College provides multiple pathways and opportunities for students including a wide selection of subjects at VCE, as well as VET and VCAL. Students in Years 10 and 11 are able to undertake an Advance Learning Program (ALP) which allows them early access to VCE subjects and university units. Our accelerated and enrichment program, Aspire, is available for students in Years 7 – 9 with exceptional academic abilities and a strong work ethic. Central to the education we offer is the wellbeing of our students.



OUR FIRST PEOPLES

Caroline Chisholm Catholic College proudly sits on the traditional lands of the Marin-Bulluk, Wurundjeri Woi wurrung people of the Kulin Nation.

The College pays respect and homage to the Indigenous people and their leaders past and present, through our actions and values lived.

VISIT US IN 2022

Join us for a tour of our three campuses, which run regularly throughout the year. Book your spot by emailing admissions@cccc.vic.edu.au or calling 9296 5311.

For more information visit cccc.vic.edu.au.

QUICK FACTS

- Age and stage appropriate combination of single-sex and co-ed education.
- Comprised of three campuses over two sites.
- Fully owned outdoor education site.
- Extensive transition support for incoming students.
- Strong emphasis on Catholic social teaching.
- Sustainability focused.
- Our pedagogy is based around a personalised and inquiry-based learning approach.
- Our students enjoy modern facilities.
- Fully integrated ICT school.
- Member of the Sports Association of Catholic Co-educational Secondary Schools and affiliated with School Sports Victoria.

GENDER

Co-educational

YEAR RANGE

Yr 7 – 9 Junior Boys and Junior Girls
 Yr 10 – 12 Co-educational

ENROLMENT

1,460 students

YEAR 7

140 boys; 140 girls
 12 classes

LANGUAGES

Italian, Japanese & Chinese

FEES 2022

Yr 7 \$4,300
 Yr 12 \$5,000

VCE UNITS 3/4

49

VET

Yes

UNI OFFERS

95%

CONNECT VIA



BUILDING RESILIENCE

At Caroline Chisholm Catholic College, we understand the relationship between wellbeing and learning is critical to the growth of the whole person. Having a sense of belonging, feeling comfortable at school and being joyful and healthy has a direct impact on each student's ability for optimal learning, enabling them to flourish. Similarly, enjoying school and being engaged in learning influences a student's wellbeing, in particular their self-confidence and resilience. Pastoral care is central to everything we do at the College, focusing on a positive and proactive approach, promoting the human dignity of each student. Staff at the College are encouraged to know each student's story, nurture their success, and guide them in the learning process. Central to this is our Learner Mentor program which encapsulates a personal development program ensuring development in fundamental aspects of our students' lives including Leadership and advocacy; Ethical decision making; Study skills; Personal wellbeing and Relationships, in a stage and age focused curriculum. Our programs and processes are fundamental to enabling all students to have the opportunity to be supported in achieving their full potential: spiritually, emotionally, intellectually, physically, socially and culturally. Our families are seen as partners and are encouraged to know and understand their hopes for their children and to be informed and engaged in their child's learning; and together we inspire each other in our love of learning.





CRC Sydenham

Est. 1982

*'Every Student
Every Pathway
Faith Seeking Understanding'*

KEY INFORMATION

Address 380 Sydenham Rd, Sydenham
VIC 3037

Telephone 03 9361 0000

Website crcsydenham.net

Principal Mr Brendan Watson

Enquiries Gina Zumbo

Email enrolments@crs.vic.edu.au

WHAT MAKES US SPECIAL

Catholic Regional College Sydenham is one of the largest co-educational Senior Catholic schools in Melbourne's North West. A student's destination or chosen pathway is a key aspect of education at CRCS.

We cater to those wishing to undertake studies in further education whether through the completion of a TAFE certificate, undertaking an apprenticeship or simply to transition into full time work. Our saying, "Every Student Every Pathway", is what we strive for, ensuring that opportunities are provided for students to pursue their pathways and goals.

With over 34 internal VET courses offered, we pride ourselves on giving back. We do this through our 15 school-based Enterprises, run by students for our community.

We aim to equip our learners with the skills required for employment in the 21st century, while also seeing the light of God in all they do. Our commitment to our Catholic faith extends into our subject offerings and VET courses with many of our students attaining their Queen's Scout Award through our VET Applied Religious Education program.

This links with our motto: Faith Seeking Understanding and we provide our students with a solid educational foundation through the lens of a Catholic backdrop.



OUR FIRST PEOPLES

CRC Sydenham acknowledges the Wurundjeri Woi Wurrung people of the Kulin Nation as the Traditional Owners of the land on which our school is placed.

We are inspired and nurtured by the wisdoms, spiritualities and experiences of our First Nations Peoples. Together we work actively for reconciliation, justice, equity and healing.

VISIT US IN 2022

If you cannot visit us on site, our Virtual Tour is now Live online.

Visit us here: <https://crs.vic.edu.au/our-community/school-virtual-tour/>

QUICK FACTS

- CRCS is celebrating 40 years in 2022
- Our La Trobe University Achieve Plus Program begins 2022
- Specialising in VCE, VCAL and VET
- We offer over 34 internal VET Programs
- We have developed over 15 school-based Enterprises
- Sacred Heart House (STEM) building development has commenced
- Runnalls Stadium building development has commenced
- Student Leadership Program
- CRCS Gazette and Pop Culture Club
- Committed to Visible Learning and Restorative Practice

GENDER

Co-educational

YEAR RANGE

Yr 11 - 12

ENROLMENT

974 students

YEAR 11/12

Yr 11 - 479 students
Yr 12 - 464 students

LANGUAGES

Italian

FEES 2022

Yr 11 \$4,474
Yr 12 \$4,474

VCE UNITS 3/4

42

VET

Yes

UNI OFFERS

53%

CONNECT VIA



BUILDING RESILIENCE

Our dedication to building resilience stems from our commitment to Visible Learning and Restorative Practice. The ongoing development of these programs at the College is preparing students to be strong, confident and decisive leaders of the future, while allowing them to confront and emerge stronger from today's challenges. Student wellbeing is at the forefront of what we do and we aim to holistically educate, celebrate and support the whole learner through our SPICES model (Spiritual, Physical, Intellectual, Emotional and Social).

Our students never see a need without doing something. Catholic Regional College Sydenham is a community within itself, however, we also understand the broader picture that is needed to prepare students for the world beyond the classroom.

As such, we must be a community minded and, therefore, connected to the broader community. As a community in Christ, we commit ourselves to the values of self-discipline, care, hospitality, endeavour, dignity, compassion, integrity, excellence, leadership, courage, commitment, forgiveness, respect, creativity, stewardship, faith, service, responsibility, justice, reconciliation and empowerment.

These are all important pillars of our students' education journey in partnering with families, friends and the business community connected to the College.





De La Salle College

Est. 1912

'Learn Live Lead'

KEY INFORMATION

Address

Tiverton Campus:
1318 High St, Malvern VIC 3144
Holy Eucharist Campus:
1241 Dandenong Rd, Malvern East VIC 3145
Kinnoull Campus:

Telephone

9 Northbrook Ave, Malvern VIC 3144
03 9508 2100

Website

www.delasalle.vic.edu.au

Principal

Mr Peter Houlihan

Registrar

Mrs Rachael Harmer

Email

enrolment@delasalle.vic.edu.au



OUR FIRST PEOPLES

De La Salle College acknowledges we are on the Traditional Lands of the Kulin Nations and pay our respect to their Elders past, present and emerging.

We are inspired and nurtured by the wisdoms, spiritualities and experiences of our First Nations Peoples. Together we work actively for reconciliation, justice, equity and healing.

VISIT US IN 2022

Join us on a monthly College Tour (subject to government restrictions) or experience our Virtual Tour of all three campuses.

Find out more or make a booking via our website.

QUICK FACTS

- We offer pathways for all - university, training, trades and employment
- Extensive VCE, VCAL and VET options
- Tailored wellbeing program
- Technology-rich learning and teaching, and well-resourced, innovative STEM programs
- Learning extension programs for high achievers
- Dedicated learning support with expert, caring staff
- Social justice and community contribution programs
- Focus on developing high quality, respectful and compassionate young men
- Expansive co-curricular program to suit all
- Multiple public transport options to the school gate

GENDER

Boys

YEAR RANGE

Yr 5 - 12

ENROLMENT

1,100 students

YEAR 7

168 students
6 classes

LANGUAGES

French & Italian

FEES 2022

Years 5 - 6 \$9,800
Years 7 - 11 \$12,700
Year 12 \$12,800

VCE UNITS 3/4

28 Units plus internal VET Building and Construction

VET & VCAL

Yes

EDUCATION SUPPORT

Yes

CONNECT VIA



WHAT MAKES US SPECIAL

Founded in 1912, De La Salle College has a long tradition of turning out quality young men. By combining a holistic learning environment and specialised programs with expansive co-curricular choices and social justice initiatives, the College enables students to reach their full potential.

We provide a Catholic education in the Lasallian tradition for students in Years 5 - 12 educating over 1,000 students across three campuses - Tiverton, Holy Eucharist and Kinnoull. Each campus is aligned for each stage of your son's development.

Our curriculum is tailored to the demands and expectations of contemporary society and we offer various pathways options including VCE, VET and VCAL. We embrace and support a rich variety of students offering learning extension programs for high achievers and dedicated learning support with expert, caring staff.

De La Salle College has quickly built a solid reputation for delivering very effective remote learning, and for the careful monitoring of students' progression and providing programs to boost mental health and general wellbeing in these uncertain times.

As Principal, Peter Houlihan says, De La Salle College is a Lasallian community with a place and pathway for all. We continue our 110-year tradition of turning out great young men of quality, respect and empathy.

Be Your Best at De La Salle College.

BUILDING RESILIENCE

Each student at De La Salle College is known and supported through a specialised Wellbeing Team which ensures student engagement. Additionally, the College's sophisticated online learning management system and digital tools, have allowed learning to continue with little need for radical modification or reinvention during times of remote learning.

De La Salle College students are encouraged to build resilience through independent learning and specialised programs such as GROW (Growing Responsibility for your Own Wellbeing). GROW teachers facilitate students' learning about mental health, respect and consent, sexual health and self-management.

The Year 9 Holy Eucharist Campus promotes a learning environment where students are further engaged, empowered and self-motivated. All classrooms have a collaborative focus providing a strong personal, social and academic foundation for the senior years of schooling. At the conclusion of Year 9, students have grown in confidence academically, are more self-aware and lead their own learning.

Resilience building can be found in all areas of our learning and teaching. The co-curricular programs aim to provide students with a solid foundation for their future career pathways, post De La Salle College.





Emmaus College

Est. 1980

'Faith, Knowledge & Service'

KEY INFORMATION

Address **Vermont South:**
503 Springvale Rd, Vermont Sth VIC 3133
Burwood (Y9@E):
285 Warrigal Rd, Burwood VIC 3125

Telephone 03 9845 3211

Website emmaus.vic.edu.au

Principal Ms Karen Jebb

Enrolments Mrs Brooke Guy

Email registrar@emmaus.vic.edu.au

WHAT MAKES US SPECIAL

Emmaus College is a co-educational Catholic Secondary College situated on two beautifully spacious Campuses. The College was established in 1980 through the amalgamation of St. Thomas More College and Chavoin College.

There is a strong demand for enrolment in Year 7 at the College, with the total school population around 1400 students. VCE results are consistently above State averages, and all students are encouraged to strive for their personal best in all areas of College life. There is a healthy emphasis on the wellbeing of all students giving them the opportunity to find their passion through many extra-curricular activities.

The Master Plan of the College delivers building projects of the highest standard. The specialist areas include a Senior Learning Centre, Sports Stadium, Performing Arts Centre, Science, Technology and Library Building, Woodwork and Engineering Block, Visual Arts and Textiles Studios, Food Technology rooms, and Cafés on both campuses. Emmaus College has extensive outdoor sporting facilities: a soccer pitch, AFL sized oval, tennis courts, and basketball/netball/volleyball courts.

The opening of our Galilee Centre in 2017 has provided another world-class learning space to complement our outstanding facilities. It houses a 250-seat Lecture Theatre, Languages, VCAL, Learning Diversity, Careers and Psychologists. Emmaus College offers an extensive range of subjects covering all learning areas of the Victorian Curriculum. Students in Years 7 and 8 undertake the breadth of studies, while our bespoke Year 9 curriculum combines experiential learning with academic rigour. Year 10 students can pursue their interests in specialist subjects as well as select a range of VCE options. At Years 11-12, VCE, VET and VCAL pathways are available.

BUILDING RESILIENCE

Emmaus College now has six contemporary learning facilities under 10 years old, with a building under construction for opening in 2022. Demolition of the school's oldest building has made way for our new Creative Industries building to expand the rich and inspiring learning areas of Music, Media, Technology and Performance. In keeping with the rest of the buildings at Emmaus, the new building will be an exceptional learning environment that is safe and supportive in developing the creative abilities of our students.

Our Jean Claude Learning Centre is a new development at our Burwood campus, offering spacious and contemporary classrooms for our enthusiastic staff and students at Year 9. Emmaus strives to provide the very best learning environment, innovative buildings, and state of the art facilities for our College community. We have spacious and well-maintained grounds, excellent sporting and performing arts facilities, well-equipped classrooms and the latest technologies that all work together to enhance the learning of our students.



OUR FIRST PEOPLES

Emmaus College acknowledges the Wurundjeri people of the Kulin nation as the Traditional Owners of the land on which our school is placed.

We are inspired and nurtured by the wisdoms, spiritualities and experiences of our First Nations People. Together we work actively for reconciliation, justice, equity and healing.

VISIT US IN 2022

Our Open Day is held in March with up to 9 school tours held throughout the year.

Further details can be found on our website and via our College Registrar.

QUICK FACTS

- Our ratio of girls and boys is 50:50
- Comprehensive range of VCE, VET and VCAL subjects in Senior Years
- Learning Enhancement Programs available
- Dedicated Year 9 campus focused on learning beyond the classroom
- New Learning Centre featuring a 250-seat Lecture Theatre
- New Creative Industries building under way
- Current development at Burwood campus offering contemporary classrooms
- Emmaus students are friendly, caring, and fabulous young people
- Extensive range of co-curricular activities
- Safe environment where every person is valued

GENDER

Co-educational

YEAR RANGE

Yr 7 - 12

ENROLMENT

1,400 students

YEAR 7

254 students
10 classes

LANGUAGES

Italian, Indonesian & German

FEES 2022

Yr 7 \$7,450
Yr 12 \$7,450

VCE UNITS 3/4

30

VET

Yes

UNI OFFERS

80%

CONNECT VIA





Genazzano FCJ College

Est. 1889

'Fidelity, Courage & Confidence'

KEY INFORMATION

Address 301 Cotham Rd, Kew VIC 3101
Telephone 03 8862 1000
Website genazzano.vic.edu.au
Principal Loretta Wholley
Enquiries Enrolments Team
Email registrar@genazzano.vic.edu.au

WHAT MAKES US SPECIAL

We share in a future-oriented and distinctive learning culture guided by reflection, wisdom and service. We empower young women to transform the world with faithfulness, courage and confidence.

Genazzano FCJ College lives its vision through embracing the talents, potential and dignity of each person. We achieve this by:

- Appreciating the unique giftedness of each other
- Confidently innovating and adapting to embrace a changing world
- Engaging with others with a positive, loving attitude; and
- Energising ourselves through high expectations.

Our hope is that through God's grace working in us all, each young person grows into their best self, with a zest for life and the generosity and confidence to use their talents and gifts in the service of others.

BUILDING RESILIENCE

Genazzano focuses on providing a diverse and innovative education, relative to students now and for their future. Genazzano's bespoke programs reflect student interest, nurture aspirations and ignite creativity, taking learners beyond the conventional classroom and curriculum. Teachers have dived into gamification, neuroscience, design and technologies, to create unique programs and microcredential courses with flexible learning and hybrid delivery options.

Included are the 'Future Skills' programs, which focus on the development of complex competencies and capabilities that enrich students' capacity for adaptability, interaction, personal growth and tenacity. An example is 'The Edge,' a physical challenge cohort subject promoting resilience, confidence, teamwork and leadership. Another flagship program is 'nextGEN' that targets practical learning through digital work-readiness courses and enterprise programs. NextGEN links with the College's microcredential program and recognises a range of learning experiences. Genazzano also offers extension and professional learning opportunities 'beyond' the school curriculum. These typically have a practical experience, folio or mini-internship component. Students can design their own personalised and flexible program aligned with their interests, ambitions and individual circumstances. Known as 'Studio Beyond', this initiative revolves around four Centres of Excellence: Global Enterprises, Innovation and Technology, Sports Development and Creative Industries; positioned to promote employability and a step into the professional arena. Students can acquire credentials in areas such as music composition, computing, technical stage production, sport psychology, event planning and podcasting, again allowing them to build skills, confidence and experience.

Genazzano is a front-runner in this arena – designing, creating and innovating learning for this third millennium. The program is rapidly evolving with more courses in development, such as professional sports coaching, an introduction to medical engineering and developing philanthropic initiatives.



OUR FIRST PEOPLES

Genazzano FCJ College acknowledges the Wurundjeri People as the Traditional Owners of the land on which our school is placed. We are inspired and nurtured by the wisdoms, spiritualities and experiences of our First Nations Peoples. Together we work actively for reconciliation, justice, equity and healing.

VISIT US IN 2022

Open Mornings and other tours are held regularly throughout the year.

Hear from our Principal and senior teaching staff and take a student-guided tour. Visit our website for dates.

QUICK FACTS

- Genazzano Institute of Learning & Brain Sciences
- Scholarships available
- Victoria's only all-girls' Catholic Boarding School
- A diverse and inclusive learning environment including international students
- Innovative Schools Award winner 2019, 2020 and 2021
- Australian Education Excellence Award for Best Use of Technology 2021
- GSV Sport, GenSwim, GenAquatic and Rowing
- Music, Orchestras, Bands and Ensembles
- Consecutive Finalists in the Junior Lord Mayor Competition
- Rated as 'Exceeding National Quality Standard' in the ELC in 2021

GENDER

Co-educational ELC
Girls Prep - Yr 12

YEAR RANGE

ELC - Yr 12

ENROLMENT

850-900 students

YEAR 7

100 students
4-5 classes

LANGUAGES

French, Italian,
Latin & Mandarin

FEES 2022

Yr 7-12: \$26,834 - \$30,219
Boarding: \$23,790 - \$29,738

VCE UNITS 3/4

36

VET

Yes

UNI OFFERS

91%

CONNECT VIA





John Paul College

Est. 1979

*'A place to learn,
grow and thrive'*

KEY INFORMATION

Address 161 McMahon Rd, Frankston
VIC 3199

Telephone 03 9784 0200

Website ipc.vic.edu.au

Principal John Visentin

Enquiries Lisa Meddings

Email johnpaul@ipc.vic.edu.au

WHAT MAKES US SPECIAL

Inspired by Gospel values, John Paul College is committed to creating and maintaining an environment where all members of the College community experience a sense of belonging and are recognised as unique. We are attentive to the needs, goals and abilities of every student and offer a vibrant learning environment where each student is supported and challenged to achieve excellence. The College promotes the importance of wellbeing as the foundation to facilitating engagement, connection and learning.

At the heart of the College is the desire for each student to flourish across religious, physical, cognitive, emotional and social domains. Students enjoy coming to school as their personal narrative is known, respected and valued. We provide a diverse and rich curriculum in all year levels to ensure students interests, talents and aspirations are catered for and nurtured.

John Paul College offers parents, students and staff the opportunity to experience community life in a faith-filled environment. Each student is invited to develop their personal faith and the meaning and value in life through prayer, liturgy, retreats and other celebrations. Students volunteer on a number of social justice initiatives, including fundraising efforts and immersion programs to the Philippines and East Timor. We are very proud of our young people who, in their service to others, enrich both their own lives and those around them.



OUR FIRST PEOPLES

At JPC, we strive to ignite a deeper awareness, respect and understanding of our Aboriginal and Torres Strait Islander peoples through the lens of the three core values in our FIRE Carrier program: Spirituality, Practical Reconciliation and Justice, and Cultural Recognition and Awareness.

VISIT US IN 2022

Information on Tour opportunities and Open Days for 2022, can be found on the College website.

You can register your details to be the first to know about these opportunities and also request an enrolment pack to be sent to you.

QUICK FACTS

- Year 7 transition program.
- Academic extension programs and competitions, including STEAM Altitude Program.
- Academic scholarships.
- Ten-year Masterplan ensures the continued delivery of high quality learning spaces. Double storey Learning Building and new Food Technology Building will be completed in 2022.
- Extensive sporting opportunities and facilities.
- Vibrant Arts Program.
- Community focused.
- Leadership and Youth Ministry opportunities.
- Values of Generosity, Perseverance, Courage and Community.
- Lead school for the 'Respectful Relationships' curriculum.

GENDER

Co-educational

YEAR RANGE

Yr 7 - 12

ENROLMENT

1,100 students

YEAR 7

240 students
10 classes

LANGUAGES

Italian

FEES 2022

Yr 7 \$5,100
Yr 12 \$6,300

VCE UNITS 3/4

20

VET

Yes

UNI OFFERS

84%

CONNECT VIA



BUILDING RESILIENCE

At John Paul College, we consider resilience vital in nurturing strong independent adults. It helps students to develop self-worth, equips them to overcome adversity and relish the challenges life will throw at them. Resilience is embedded in the culture of the College and as a community we focus on student strengths, promote wellbeing, and nurture meaningful relationships.

Our comprehensive Pastoral Program creates opportunities for students to develop planning and decision-making skills, and to enjoy the process of learning. We highlight that the objective is not about achieving perfection, and value the process over the outcome and the challenge over the victory. As a community we nurture the supportive relationships between the students, staff and families that develop a sense of belonging and identification. Student resilience is achieved through genuine relationships, interaction, and engagement. John Paul College staff create daily moments of connection and conversation that continually build students' confidence and abilities.

Students are empowered to be mentally healthy and to utilise empathy, gratitude and mindfulness to build resilience. When faced with a challenge, we support our students to develop coping mechanisms, have confidence in their ability, and to learn strategies to navigate adversity for now and in the future.





Kilbreda College

Est. 1904

'Strength and Kindliness'

KEY INFORMATION

Address	118 Mentone Pde, Mentone VIC 3194
Telephone	03 9581 7766
Website	kilbreda.vic.edu.au
Principal	Nicole Mangelsdorf
Enquiries	College Registrar
Email	registrar@kilbreda.vic.edu.au



OUR FIRST PEOPLES

Kilbreda College acknowledges the Bunurong People as the Traditional Owners of the land on which our school is placed.

We are inspired and nurtured by the wisdom, spirituality and experiences of our First Nations Peoples. Together we work actively for reconciliation, justice, equity and healing.

VISIT US IN 2022

We invite you to join us for one of our regular Open Mornings, Talk and Tours with the Principal or at our annual Open Evening.

Please refer to our website for further details.

QUICK FACTS

- Top 10 Victorian Catholic Secondary School – based on 2020 VCE results
- Extensive Student Leadership opportunities
- VCAL pathway available
- Extensive co-curricular program
- Well-resourced Wellbeing Team
- Sustainability Victoria 'ResourceSmart' school
- Religious Education program centered around Social Justice
- Unique Year 9 BRIDGES Program
- Contemporary learning spaces
- Cultural and Language immersions

GENDER

Girls

YEAR RANGE

Yr 7 - 12

ENROLMENT

900 students

YEAR 7

157 students
7 classes

LANGUAGES

Italian, Japanese & French

FEES 2022

Yr 7 \$6,615
Yr 12 \$6,615

VCE UNITS 3/4

31

VET

Yes

UNI OFFERS

94%

CONNECT VIA



WHAT MAKES US SPECIAL

Located in the heart of Bayside, Mentone, directly opposite the Mentone Railway Station, Kilbreda has been proudly educating young women in the Brigidine Tradition for over 118 years. Our College values of Compassion, Courage, Hope, Hospitality, Justice and Wonder, underpin every aspect of College life.

At our College, our innovative curriculum acknowledges, celebrates and values the experiences of students as they establish individual identities within our community. They will experience an education that is transformative through a contemporary and comprehensive learning environment that empowers them to be well-informed, independent and critical thinkers in this ever-changing world. Within our students we develop and nurture a growing capacity to engage with empathy in the lives of one another and within and beyond our community. In addition to community programs and partnerships, our students are encouraged to partake in an extensive co-curricular program with a commitment to STEM, the Arts, Sport, Living Justice and Sustainability.

We recognise that each of our students are unique and are committed to ensuring that they are known, challenged and supported. With an emphasis on student wellbeing, our tailored programs foster an inclusive, nurturing culture that encourages a sense of pride, purpose and belonging.

BUILDING RESILIENCE

Resilience is the ability to bounce back from adversity. It is a form of 'ordinary magic' that allows us to cope with the ups and downs of life. The inner strength and spirit that encompasses resilience is a focus of our whole-school approach to Positive Education and is grounded in our College values. It is guided by our mission to foster and promote the wellbeing of every individual so that they may flourish emotionally, spiritually, socially, physically and academically. Our students understand the place of struggle and perseverance in moving forward and building strength and resilience. Our teachers support our students to develop a resilient mindset that will help them deal with challenges by equipping them with strategies to solve problems for themselves, cultivating the dispositions of optimism, grit and compassion for others and helping them to discover their personal strengths and how to harness them. At each year level, we have developed specific, age appropriate programs to strengthen student resilience, promote positive coping strategies, nurture a positive self-view, adopt a positive outlook and to empower our students to embrace a willingness for challenge and adventure. Students are provided with a range of innovative and dynamic educational experiences both within and beyond the classroom that focus on transferable skills, such as adaptability, resilience, problem solving and communication. These experiences and our approaches to intentionally cultivating a resilient mindset encourage our students to always look forward with hope and optimism and motivate them to be courageous, resilient, life-long learners who always act in a spirit of *Strength and Kindliness*.





Kolbe Catholic College Greenvale Lakes

Est. 2008

'Faith, Courage, Compassion'

KEY INFORMATION

Address Lysterfield Dr, Greenvale Lakes
VIC 3059
Telephone 03 8339 3060
Website kolbecc.catholic.edu.au
Principal Nick Scully
Enquiries College Reception
Email office@kolbecc.catholic.edu.au

WHAT MAKES US SPECIAL

At Kolbe Catholic College, we place the physical, emotional and social wellbeing of students as central to their learning and physical development. The wonderful relationships developed amongst the students and staff through the College Pastoral Care System exemplify the supportive and relational nature of the College.

The College has a strong academic program which offers multiple pathways for students to pursue tertiary education or move into trade-based qualifications.

Our curriculum is innovative and diverse, providing students with opportunities for growth and to explore areas of passion. Pathways such as the Academic Scholarship Program, the Ignite Accelerated Learning Program and the College Sporting Academy, provide students with the opportunity to be challenged and to break pre-existing boundaries to further their discovery of self. The Ignite Program links to early entry into VCE, VET and VCAL, as well as early entry into university subjects and tertiary education.

Students have the opportunity to engage in STEM-based programs, which see them travel locally, around Australia and internationally to further their learning. Throughout these programs, students learn to think critically and creatively as they engage in project and/or inquiry-based learning.

The faith, wellbeing and cocurricular programs provide students with a myriad of opportunities and are supported by the establishment of strong learning partnerships that aim to support each individual.

BUILDING RESILIENCE

The structures and programs on offer at Kolbe Catholic College enable students to develop the knowledge, skills and understanding for them to be active and engaged citizens. The learning blueprints established are designed to arm students with the confidence and resilience to navigate the current landscape, as well as become leaders in the world of the future.

Social emotional learning is embedded throughout the College Pastoral Care Program and the Year 7-12 curriculum. Complementing this are dual platforms for learning that enable students to link with universities from around the globe, industry representatives and community organisations to establish partnerships and further their development of self.

The inclusion of core, specialist, elective and interdisciplinary learning units at each year level are supported by a wellbeing curriculum and various transition programs to assist students at key milestones within their secondary educational journey. Programs such as Year 7 Stepping Stones, Year 9 LEAD and Year 10 Pathways, support students at critical points in their development, assisting them as they further establish their authentic sense of self.



OUR FIRST PEOPLES

Kolbe Catholic College Greenvale Lakes acknowledges the Wurundjeri People as the Traditional Owners of the land on which our school is placed.

We are inspired and nurtured by the wisdoms, spiritualities and experiences of our First Nations Peoples. Together we work actively for reconciliation, justice, equity and healing.

VISIT US IN 2022

College tours are run regularly throughout the year.

Bookings can be made via the College website.

QUICK FACTS

- Academic Scholarships
- The Ignite Accelerated Learning Program for Years 7-10
- Multiple university partnerships
- International and National Learning Tours
- Curriculum and cocurricular programs with a focus on STEM, Coding and Robotics
- Instrumental Music and Band Programs
- The College Sporting Academy for students across Years 7-12
- Onsite VET to complement the delivery of VCE and VCAL
- An extensive Cocurricular Program
- Elective and specialist learning programs

GENDER

Co-educational

YEAR RANGE

Yr 7 - 12

ENROLMENT

1,130 students

YEAR 7

216 students
9 classes

LANGUAGES

Italian

FEES 2022

Available upon request

VCE UNITS 3/4

41

VET

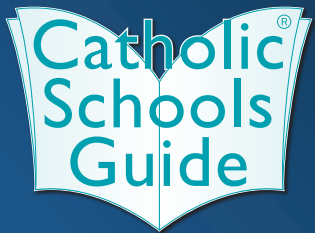
Yes

UNI OFFERS

75%

CONNECT VIA





2022 COMPETITION

BUILD A BIG LEGO TOWER

TO WIN BIG FOR YOUR SCHOOL!

Every Catholic school in Australia is invited to enter this competition to win an All New CommBox Interactive Touch Screen from Integrate AV. Schools may enter as many times as they like.

5 Simple Steps to Enter:

1. Construct the tallest single-stack LEGO tower you can make using only LEGO 8 knob storage bricks.
2. You can use a LEGO base mat for support and build your tower with one single brick on top of each other.
3. Build the freestanding tower as tall as you possibly can without using other aids such as bracing or glue.
4. Once your tower is completed, take a photo of it and count how many single bricks the tower is in height (not counting the base mat).
5. Register your school entry via www.catholicschoolsguide.com.au/competitions/ and include your photo and number of bricks in height.

COMPETITION CLOSING
MONDAY 1 AUGUST 2022
WINNER WILL BE ANNOUNCED MONDAY 8 AUGUST 2022

75" **commBOX**
CLASSIC INTERACTIVE PANEL



Winning Entry

The winning entry will be the tallest tower, as judged by the Catholic Schools Guide and Integrate AV team. The winner will be notified on Monday 8 August and also announced on the Catholic Schools Guide website.

PROUDLY SPONSORED BY

INTEGRATE AV

COMPETITION PRIZE

- ▶ All New 75" CommBox Classic Interactive Touch Screen
- ▶ Integrate AV Motorised Centerlift Mobile Trolley
- ▶ Logitech Brio 4K Webcam
- ▶ Delivery & Installation by Integrate AV
- ▶ 7 Year CommBox Warranty

**ENTER YOUR SCHOOL
TO WIN AN AMAZING PRIZE
VALUED OVER \$9500!**

Terms and Conditions:

Full terms and conditions are listed via Catholic Schools
Guide website catholicschoolsguide.com.au/competition

1800 742 748 [INFO@INTEGRATEAV.COM.AU](mailto:info@integrateav.com.au)



commBOX
CLASSIC INTERACTIVE PANEL



Loyola College

Est. 1980

'Celebrating a 21st century Education for Girls and Boys'

KEY INFORMATION

Address 325 Grimshaw St, Watsonia VIC 3087
Telephone 03 9434 4466
Website loyola.vic.edu.au
Principal Joseph Favrin
Enquiries College Registrar
Email registrar@loyola.vic.edu.au

WHAT MAKES US SPECIAL

Loyola College, in the Ignatian spirit, aims to educate the whole person. This is achieved through offering a broad curriculum which allows our students to pursue both academic and vocational pathways. Students are given every opportunity to explore their many gifts and talents through our varied Co-Curriculum Program activities. Loyola College is outward looking and has a strong international focus and our graduates are articulate, adaptable, discerning and confident young men and women of conscience, committed to living the values of Jesus Christ in a global community. At Loyola, there is a pathway for every student as we offer VCE, VCAL and VET programs. We also offer a range of accelerated learning opportunities, including Enhanced English and Mathematics, as well as the opportunity to take on a VCE subject in Year 10. We deepen and strengthen our students' experience in Languages with our optional Content and Language Integrated Learning (CLIL) program in Years 9 and 10.

BUILDING RESILIENCE

If there is one thing we have all learned over the past two years, it is the importance of resilience. In the Student Services Department at Loyola, we are well placed to help develop the resilience of some of the most vulnerable students in our school. The COVID pandemic has meant that our students have faced unfathomable challenges and each learner's journey has been unique. In response to this, we have customised our students' courses to place them in a better position to thrive during remote learning.

A key element of resilience is knowing who to call on for help when things get tough; those who have struggled in lockdown have discovered that they have a wealth of supports to access, both within the Student Services Department and through the school's regular pastoral channels. Our students understand the structures in place at Loyola to help them succeed, even in the face of unprecedented adversity. Each of the students in our care and their families have an individual contact person in the Learning Diversity Team, effectively providing them with a primary go-to person to speak to before they become overwhelmed. This key support structure operates in addition to the school-wide mentor program which serves to meet the everyday wellbeing needs of all students across all year levels. Our Learning Diversity teachers work individually with our students and their classroom teachers to tailor their courses to help them achieve their best. The students are supported by our Learning Support Officers who provide on-the-ground assistance and extra help to give them every opportunity to thrive. Our counsellors also provide exceptional care and offer effective strategies to help students successfully navigate their own paths through their education and beyond. The Student Services Department here at Loyola sees the road to resilience as individual to each student, so we manage each student differently, using their individual qualities to build sturdy foundations of emotional strength they can tap into for years to come.



OUR FIRST PEOPLES

Loyola College acknowledges the Wurundjeri People as the Traditional Owners of the land on which our school is placed.

We are inspired and nurtured by the wisdoms, spiritualities and experiences of our First Nations Peoples. Together we work actively for reconciliation, justice, equity and healing.

VISIT US IN 2022

Our Open Day is on Sunday 15th May, 2022. College Tours are held regularly throughout the school year & give you an opportunity to meet the Principal, explore our facilities, & ask our staff & students questions. Visit our website to book a tour.

QUICK FACTS

- We offer over 50 co-curriculum activities
- You can study RE and Humanities in a foreign language
- We have our own student restaurant
- Our musicals are award winning
- We have study tours to Asia, Europe and America
- We offer VCE, VCAL and VET programs
- Our library is open late after school and during the school holidays
- We compete against other schools every week in sport
- Our College is located on 27 acres with amazing gardens and facilities
- Students are supported after graduating through a strong Alumni Association

GENDER

Co-educational

YEAR RANGE

Yr 7 - 12

ENROLMENT

1,406 students

YEAR 7

257 students
10 classes

LANGUAGES

French, Italian
& Indonesian

FEES 2022

Yr 7 \$7,451
Yr 12 \$8,094

VCE UNITS 3/4

41

VET

Yes

UNI OFFERS

96%

CONNECT VIA





MacKillop College

Est. 1970

*'Celebrating all life.
Challenging all people.
Dreaming the new day.'*

KEY INFORMATION

Address Russell St, Werribee VIC 3030
Telephone 03 8734 5200
Website mackillop.vic.edu.au
Principal Rory Kennedy
Enquiries Amanda Gough
Email registrar@mackillop.vic.edu.au

WHAT MAKES US SPECIAL

MacKillop College is proud to stand as a representation of our society. We are responsive to the needs of our students and community, striving continuously to improve the educational experiences and opportunities presented.

MacKillop College believes in offering a wide variety of different disciplines of learning. Whether a student has an affinity for academia, politics, social matters, religion, leadership, sport, performance, music, hospitality, etc., MacKillop College gives our students the tools they need to pursue their interests and build their experiences. We support the whole person based on what will benefit them in their individual journey.

We also encourage exploration, discussion and an awareness of current political and social issues. Students are provided with guidance to become advocates for transformation in the world. This is evidenced by the student-run extracurricular groups, which include EcoMacK (aiming to implement sustainability strategies on campus and within the community), MacKillop College Zoo Crew (giving students hands-on experience in animal husbandry), and HarMacK (which focuses on cultural diversity and inclusivity).

Further to HarMacK, the College embraces diversity with our International Program, reaching into Europe and Asia with international trips, homestay opportunities and immersion programs. For those who can't travel abroad, we have a variety of celebrations in honour of diversity, such as Languages Week, Harmony Week and Music Week.

BUILDING RESILIENCE

At the time of writing this, we have overcome another season of lockdowns due to the COVID-19 pandemic. It has been a humbling reminder of the resilience and adaptability required when working together towards a greater good.

On a global scale, the entire method of teaching and learning has been thrown into uncertainty and the education industry has needed to adapt. Face-to-face interactions, practical elements to classes, excursions and invited guests all became unreliable resources; with technology, such as Zoom and the flexibility to move from the tangible classroom to a virtual one, suddenly a requirement.

MacKillop is a Catholic College in the Josephite tradition, inspired by St Mary of the Cross MacKillop and, during this pandemic, our patron saint's words of strength in unity and hope in the face of adversity helped to strengthen our resolve to survive and thrive.

There's a reason the school motto is 'Celebrating all life; Challenging all people; Dreaming the new day.' We live and learn for a brighter, more educated and inclusive future. We are a community that believes in each other.

MacKillop College has been, and will continue to be, resilient and adaptable.



OUR FIRST PEOPLES

MacKillop College acknowledges the Kulin Nation People as the Traditional Owners of the land on which our school is placed.

We are inspired and nurtured by the wisdoms, spiritualities and experiences of our First Nations Peoples. Together we work actively for reconciliation, justice, equity and healing.

VISIT US IN 2022

Keep an eye on our website for Open Days in 2022, or contact the College Registrar today to book your private tour!

QUICK FACTS

- Our theme for 2022 is: *Seeking justice, living compassion.*
- MacKillop College has a student-run coffee cart.
- The College founder was a Sister of St Joseph.
- Once a year, the College turns into a festive space at no cost to students, parents/carers.
- The College has a variety of animals.
- Staff and students host a College podcast.
- New buildings at the College are made out of renewable materials.
- New buildings are powered with solar panels.
- In 2022, we're running two College musicals.
- MacKillop College has a separate Year 9 Campus.

GENDER

Co-educational

YEAR RANGE

Yr 7 - 12

ENROLMENT

1,720 students

YEAR 7

317 students
14 classes

LANGUAGES

French, Italian
& Japanese

FEES 2022

Yr 7 \$5,570
Yr 12 \$6,425

VCE UNITS 3/4

39

VET

Yes

UNI OFFERS

90.26%

CONNECT VIA





Marcellin College

Est. 1950

*'Virtute Ad Altissima -
Through virtue and courage
to strive for the highest'*

KEY INFORMATION

Address 160 Bulleen Rd, Bulleen VIC 3105
Telephone 03 9851 1589
Website marcellin.vic.edu.au
Principal Marco Di Cesare
Enquiries Michele Mellas
Email registrar@marcellin.vic.edu.au



OUR FIRST PEOPLES

Marcellin College acknowledges the Wurundjeri-Baluk clan of Woiwurrung people in the Kulin Nation as the Traditional Owners of the land on which our school is placed. We are inspired and nurtured by the wisdoms, spiritualities and experiences of our First Nations Peoples. Together we work actively for reconciliation, justice, equity and healing.

VISIT US IN 2022

Throughout the year, the College conducts regular tours of our facilities. Prospective families will hear from our Principal, meet with staff and be taken on a student led tour where they will witness students participating in a range of learning opportunities. Please visit our website for further details.

QUICK FACTS

- Overseas Study Tours
- Student Exchange Program
- Immersion Experiences to Bourke, Cambodia and South Africa
- Junior & Senior Productions with Our Lady of Mercy College
- Social Justice & Community Service Programs
- AGSV & VSRU Sport Programs
- Student Leadership Opportunities
- Instrumental Music, Choral & Ensemble Program
- Youth Ministry
- Public Speaking & Debating

GENDER

Boys

YEAR RANGE

Yr 7 - 12

ENROLMENT

1,400 students

YEAR 7

243 students
9 classes

LANGUAGES

Italian, Chinese
& Indonesian

FEES 2022

Yr 7 \$12,030
Yr 12 \$13,430

VCE UNITS 3/4

35

VET

Yes

UNI OFFERS

100%

CONNECT VIA



WHAT MAKES US SPECIAL

Marcellin College is an inclusive faith learning community where encounter with self, place, God and the other creates opportunities for every young man to unlock his inherent possibility.

Our focus is developing young men who can one day take their place in society as active contributors, empowering them to be agents of social change and human advancement.

A leader in boys' education since 1950, our College has built an outstanding reputation for excellence in learning, life and faith, enabling students to develop with character, confidence and competence.

State-of-the-art facilities and extensive Christian service, academic, sport and arts curricular and co-curricular programs inspire each young man to simply be more and achieve their personal best in the classroom and beyond.

BUILDING RESILIENCE

We recognise that our world is changing faster than ever before, and our children will live vastly different lives than the ones we know today. It is important that we provide for the development of the whole person so that our young men thrive and flourish in this new era.

What is 'The Marcellin Difference'? We recognise that we need to develop the young men in our care as truly whole human beings.

We aspire to cultivate a balance of foundational literacies, character attributes and key capability skills to navigate the world as compassionate Christians and ethical global citizens.

We seek to equip each young man with the context they need to comprehend the world they live in and help them build the necessary critical and creative thinking to better understand and positively contribute to society.

Marcellin College aspires to foster a robust and inquisitive mind, allowing each young man to emerge, grow and thrive.

We aim to equip our young men to be as prepared as possible for any version of what lies ahead.

Within a safe and nurturing learning environment, all young men are supported to develop their independence, self-awareness, character, and the academic competence that they will need to meet the challenges of our constantly evolving world. In knowing their rights, they must also accept their responsibilities.

We hope for each young man to become courageous and entrepreneurial thinkers capable of inventiveness, adaptability, and social and emotional resilience.

Ultimately, our young men are called to explore new ways of thinking, preparing them to navigate the unknowns of tomorrow.



Marian College

Est. 1957

'Strength & Kindness'

KEY INFORMATION

Address 196 Glengala Rd, Sunshine West VIC 3020
Telephone 03 9363 1711
Website mariansw.catholic.edu.au
Principal Raymond Pisani
Enquiries Natalie Micallef
Email principal@mariansw.catholic.edu.au

WHAT MAKES US SPECIAL

In order to sustain ourselves through our experiences over the course of any year we turn to those elements that ground us, our beliefs and values. At Marian, we grow as a community in service of others by showing hospitality, compassion, courage, justice, hope and wonder.

In dealing with the many changes that impact us over time, the College emphasises the value of hospitality to promote wellbeing. The generosity of spirit in giving time to others and responding to their needs with authentic examples of compassion are constant inspirational examples of making a difference within our community.

We place great value on the courage to be prepared to do the right thing and speak up against any forms of injustice to ensure all around us are protected from any situation where their health, wellbeing or rights are compromised. We develop an understanding of the current plight of all people, whether local or global, and commit to promoting equity and justice for all.

Our tradition and faith gives us hope that by doing what is good and right we will give witness to our core values through our purpose in life. As we strive to realise our mission we celebrate with joy all our achievements. We stand in wonder of the talent, energy and commitment of all our Marian community.

BUILDING RESILIENCE

Marian College is a progressive Kildare Ministries Catholic School for girls in Sunshine West. We commence each year well prepared to build on our successes and achievements. Whilst we have all endured two years that have rocked the foundations of human life, a resilient spirit has emerged through combined elements of hope, compassion, creativity and hospitality.

Our school has demonstrated the ability to adjust to the unexpected environment highlighted by our strengths in innovation and planning. Our staff continue to work tirelessly and collaboratively to prepare high-quality student learning programs.

Teachers have been creative in adapting and learning new skills to ensure that student learning continued. Underpinned by high expectations our students also took responsibility for their learning in a new environment.

Whilst there were challenges, 2021 was also a year of incredible growth and achievement at Marian College. To assist them to overcome life's trials, students set future goals based upon a broad range of capabilities and skills, ensuring that they are prepared to contribute and live well in the rapidly changing world, no matter what these challenges may be.

The aim is to continue to develop a program that integrates student well-being and academic progress resulting in a life giving and fulfilled pathway.



OUR FIRST PEOPLES

Marian College acknowledges the Wurundjeri People as the Traditional Owners of the land on which our school is placed.

We are inspired and nurtured by the wisdoms, spiritualities and experiences of our First Nations Peoples. Together we work actively for reconciliation, justice, equity and healing.

VISIT US IN 2022

The college welcomes you to join us throughout the year for our College Tours.

Please visit our website for further details and booking options.

QUICK FACTS

- Started by the Brigidine Congregation in 1957
- Now governed by Kildare Ministries
- College Motto: Strength and Kindness
- College patron: St Brigid of Kildare
- Only girls school in Brimbank
- Location well accessed by all means of transport
- Multicultural community incorporating over 50 nationalities
- Strong connection of Wellbeing and Learning programs
- College Captains are called Lampbearers
- Major focus on social justice

GENDER

Girls

YEAR RANGE

Yr 7 - 12

ENROLMENT

840 students

YEAR 7

150 students
6 classes

LANGUAGES

Italian &
Indonesian

FEES 2022

Yr 7 \$2,160
Yr 12 \$2,360

VCE UNITS 3/4

33

VET

Yes

UNI OFFERS

100%

CONNECT VIA





Marymede Catholic College

Est. 2006

'A Complete Education –
A Prep to Year 12 Catholic
Co-educational College'

KEY INFORMATION

Address 60 Williamsons Rd, South Morang
VIC 3752
Telephone 03 9407 9000
Website marymede.vic.edu.au
Principal Tim Newcombe
Enquiries College Registrar
Email registrar@marymede.vic.edu.au



OUR FIRST PEOPLES

Marymede Catholic College acknowledges the Wurundjeri People as the Traditional Owners of the land on which our school is placed.

We are inspired and nurtured by the wisdoms, spiritualities and experiences of our First Nations Peoples. Together we work actively for reconciliation, justice, equity and healing.

VISIT US IN 2022

Our Open Day is on Sunday 20 March 2022. Please visit our website for other tour dates www.marymede.vic.edu.au

QUICK FACTS

- Student Representative Council
- Interschool sport competitions
- High Performance Sports Academy
- Game Changers
- Tournament of Minds
- Coding club
- LOTE club
- Garden club
- College Productions
- FIRE carriers
- Writer's festival
- Choir & Rock band
- Film school
- Junior band
- Sports Academies
- Science Talent Search
- Wellbeing club

GENDER

Co-educational

YEAR RANGE

Prep - Yr 12

ENROLMENT

2,080 students

YEAR 7

250 students
10 classes

LANGUAGES

Italian & Japanese

FEES 2022

Yr 7 \$6,104
Yr 12 \$6,757

VCE UNITS 3/4

40

VET

Yes

UNI OFFERS

95.25%

CONNECT VIA



WHAT MAKES US SPECIAL

Marymede Catholic College is a young and vibrant school community. We aspire, in the way of Mary, to give students a passion for life, a love of learning and a determination to be of service to others. Through our mission and values, we are committed to recognising and developing the unique potential of every student, from Prep through to Year 12, preparing them to adapt to change in the world we are living in.

As a result, our curriculum nurtures the individual to achieve fullness of life through a balanced emphasis on academic, spiritual, social, emotional and physical wellbeing. We have the highest expectations for the personal behaviour and academic effort of our students. We support them in their quest to aspire towards excellence in everything they do. Our students grow and develop in a learning environment that promotes diversity and choice. Teachers and facilities provide students with every opportunity to develop their own interests and skills. An education at Marymede incorporates the latest technology, delivered by educators who deeply care about student outcomes, within an environment that stimulates and encourages excellence.

Our Materials and Technology Centre supports and strengthens our range of educational experiences in design and technologies, spanning both primary and secondary levels. This new building expands our already extensive specialist facilities for wood-working, textiles, digital technologies, CAD and 3D printing, as well as new curriculum opportunities. In 2022, we will open a \$4.8M Performing Arts Centre with specialist performance rooms and classrooms. The Centre will further develop and showcase the enormous talents of our students.

In an exciting development for the Doreen and surrounding communities, Marymede Catholic College will open a new campus in Doreen commencing with Year 7 in 2024. Like our South Morang campus, the College will place a strong, dual emphasis on personal endeavour and pastoral care, guiding its graduates to enter adulthood with confidence, self-esteem, and the skills to successfully tackle life's challenges.

BUILDING RESILIENCE

A complete education goes beyond the classroom. We offer diverse co-curricular programs that enhance student learning and provide opportunities to discover new talents, foster passions and aspire towards excellence. Discovery and participation in a range of sports is encouraged through our extensive facilities and programs. Vast opportunities exist to compete in inter-school sport competitions against other schools and at state and national levels.

At Marymede, we are committed to providing your child with a complete education. An education, which encompasses our Catholic faith, extensive opportunities, technology-rich learning experiences and builds competent and creative learners.





Mater Christi College

Est. 1963

A School of Good Samaritan Education 'Informed Compassionate Creative'

KEY INFORMATION

Address 28 Bayview Rd, Belgrave VIC 3160
Telephone 03 9754 6611
Website www.materchristi.edu.au
Principal Maria Haggett
Enquiries Registrar
Email registrar@materchristi.edu.au

WHAT MAKES US SPECIAL

Set in the hills of beautiful Belgrave, the heart of Wurundjeri Country, Mater Christi offers something quite unique to girls in the outer east of Melbourne. Our College was established by the Good Samaritan Sisters in 1963, which makes us quite young as far as girls' schools go. Mater Christi celebrates what it means to be a girl in a changing world. We aspire to educate girls who can take their place in the affairs of society, are not limited by stereotypes and can be true to who they are.

The Good Samaritan Sisters, an Australian order founded in 1857, were inspired by the parable of the same name; this tale of compassion found in the Gospel of Luke is central to our College values.

Mater Christi's motto consists of three words – Informed... Compassionate... Creative... These three words capture our dreams for each and every young person who walks through our doors. Whatever her pathway, each student will have opportunities to explore her interests and talents, to learn about herself and the world around, and to find a place to belong. At Mater Christi, we take seriously our responsibility to walk gently on the earth as stewards of creation, to be a voice for the voiceless, and to form leaders who are optimistic about the future.

There is no doubt that the pandemic has caused many of us to rethink our priorities. We know that managing the uncertainty of these times has taken a toll, on some more than others. At Mater Christi we take a proactive approach to wellbeing by including social-emotional learning as part of our learning program. Our curriculum is based on the Middle Years Program of the International Baccalaureate, an internationally recognised framework which caters for a range of learning needs, offering support and challenge where required. Our VCE program is rich and our results are a testament to the professionalism and expertise of our teachers.

A girls' school provides a safe environment to explore identity in the midst of a caring, forward thinking, service-oriented community. Meaning-making, Learning, Wellbeing and Enrichment are the pillars on which we build this educational community, and we invite you to join us.

BUILDING RESILIENCE

While resilience might be the word of the moment, at Mater Christi we understand that resilience is made up of discreet skills that need to be intentionally fostered. Our Pastoral Program offers opportunities for students to explore the components that lead to resilience. One crucial step is the ability to cope with change and challenge – and we know this doesn't come easily.

Our evidence-based approach to social-emotional learning focusses on building those skills which are crucial for coping with adversity. Of course, it isn't enough to just "cope" – our aim is for students to learn skills that will help them thrive in most situations. As always, we seek to be partners in this endeavour with our families and the wider community.



OUR FIRST PEOPLES

Mater Christi College respectfully acknowledges that our place of learning sits upon the lands of the Wurundjeri people. We honour the past, present and emerging leaders of all First Nations whose lands were never ceded and commit to ongoing efforts towards Reconciliation.

VISIT US IN 2022

To experience the 'can-do energy' of girls at Mater Christi, we warmly invite families to register via our website for a College Tour or a Taster Morning experience for your daughter.

QUICK FACTS

- Excellence in all-girls education
- Region leading results
- Student-centred culture in a nurturing environment
- Strong focus on Social Justice
- Leadership opportunities across all Year Levels
- MYP Years 7-10, VCE/VCAL Years 11 and 12
- Easy access via public transport and private charter buses
- Girls are encouraged to be themselves and we believe there is no limit to what girls can achieve
- Modern facilities set in beautiful hills of the Yarra Ranges
- Extensive co-curricular opportunities

GENDER

Girls

YEAR RANGE

Yr 7 - 12

ENROLMENT

700 students

YEAR 7

130 students
5 classes

LANGUAGES

French & Chinese

FEES 2022

Yr 7 \$8,980
Yr 12 \$8,980

VCE UNITS 3/4

Over 30

VET

Yes

UNI OFFERS

95%

CONNECT VIA





Mazenod College

Est. 1967

'Leave Nothing Undared for the Kingdom of God'

KEY INFORMATION

Address Kernot Ave, Mulgrave VIC 3170
Telephone 03 9560 0911
Website mazenod.vic.edu.au
Principal Dr Paul Shannon
Enquiries Alison Alberico (Registrar)
Email frontdesk@mazenod.vic.edu.au

WHAT MAKES US SPECIAL

Mazenod College was established in 1967 and has always been committed to developing a holistic approach the education of young men in the Oblate Charism.

Mazenod College is a Catholic Boys' College served by the Oblates of Mary Immaculate working in partnership with the Melbourne Archdiocese.

Founded on the strength of local parishes, we continue to be a community that instils faith, respect and support in the lives of the young men we serve. This encourages our students to foster a sense of charity and awareness of social and global responsibilities.

Our students are enthusiastically involved in many charitable activities, which include Rosies' Street Mission and Oblate Overseas Immersions.

Our Visible Wellbeing and Visible Learning approach intentionally challenges students to work independently and be learners for life.

The skills acquired as they navigate the extensive co-curricular programmes of Sport, Music, Public Speaking, Debating, Outdoor Education and Social Justice, have always been of enormous benefit and are intrinsic to our approaches and practices.

Lea Waters' research and programmes on Positive Psychology enable us to recognise the Science of Wellbeing and the Science of Learning. This enables our students and staff to identify their own and others' wellbeing in all contexts and across any subject matter.

Mazenod College is committed to the pursuit of excellence in the intellectual, social, moral, spiritual and cultural development of each student according to his unique capacity.

BUILDING RESILIENCE

At Mazenod College, developing resilience in young men is part of our Visible Wellbeing and Visible Learning strategy. We foster resilience with strong connections and participation with the Mazenod broader community.

We have our Old Collegians Association named MOCA, which has been established to foster relationships with students beyond their years at Mazenod College.

Connections in business as well as on the sporting fields, on the stage, and in the arts, enable our students to continue community connections and relationships.

With changes in workplaces and great pressures on young people, there has never been a better time to protect and develop our networks.

Our Old Collegian Association is very strong, supportive and provides stability and direction to our young men.



OUR FIRST PEOPLES

Mazenod College acknowledges the Woiworing People as the Traditional Owners of the land on which our school is placed. We are inspired and nurtured by the wisdoms, spiritualities and experiences of our First Nations Peoples. Together we work actively for reconciliation, justice, equity and healing.

VISIT US IN 2022

Please book on
mazenod.vic.edu.au

Open Day - Tuesday 8th
March 4pm-8pm

College Tours - 9.00am,
9.30am, 10.00am & 10.30am
on 17th May, 19th July, 2nd
August & 11th October.

QUICK FACTS

- Catholic Tradition in the Oblate Charism
- Pastoral Care and expertise in Boys Education
- Community Networks that continue beyond graduation
- Co-Curricular Activities: Sport, Music, Outdoor Education, Drama, Visual Arts, Public Speaking
- National Chess Champions
- Over 40 VCE subjects and VET and VCAL
- Learning Centre & Enhancement Program
- Yearly Musical Production
- Careers Counselling
- Homework Club
- Retreats, Camps & Youth Mission

GENDER

Boys

YEAR RANGE

Yr 7 - 12

ENROLMENT

1,450 students

YEAR 7

252 students
9 classes

LANGUAGES

Italian, Japanese
& Mandarin

FEES 2022

Yr 7 \$7,920
Yr 12 \$7,920

VCE UNITS 3/4

27 VCE - 7 VCE, VET,
VCE & Vocational

VET

Yes

UNI OFFERS

80.18%

CONNECT VIA





Mercy College

Est. 1965

'Specialising in Learning for Girls'

KEY INFORMATION

Address 760 Sydney Rd, Coburg VIC 3058
Telephone 03 9319 9299
Website mercycoburg.catholic.edu.au
Principal Lila McInerney
Enquiries College Registrar
Email registrar@mercycoburg.catholic.edu.au



WHAT MAKES US SPECIAL

As a Catholic girls' College in the Mercy tradition, Mercy College prides itself on educating the whole person – physically, emotionally and spiritually. We are proud of our rich history of educating young women in Years 7 to 12. At Mercy College, the prospects for students' pursuits to be personalised is strengthened. We recognise the importance of providing opportunities for every student to pursue her dreams and explore unknown possibilities. Each student is known. They are nurtured to be courageous, inquisitive and persistent learners. Our students develop an awareness of the way they learn and establish attitudes to be able to become lifelong learners. We dedicate time each day to developing a personal connection between our students their respective mentor teachers. Throughout the day the focus of lessons range from inquiry, adventure and problem solving to communication skills, physical challenge and creative expression. In our College, every student has the opportunity to discover her true self. We respect, value and celebrate each student's gifts, talents and all that she brings to our community. We value student voice and our students take an active part in shaping the learning community. Our staff and students work together to improve learning experiences and outcomes in a visible way. In building a culture of excellence, we ensure our students are equipped with the knowledge and skills to enable them to succeed wherever life may take them.

BUILDING RESILIENCE

Mercy College is a community of learning that provides students with broad and rich learning experiences throughout the curriculum and in partnership with parents. Through programs across nine disciplinary-based learning areas, students experience and explore a world of knowledge and skills to equip them to be proactive and informed citizens now and into the future. Students explore a diversity of styles and habits of learning through lesson activities, independent tasks, in cooperation with their peers and in practical and problem solving scenarios. Understanding how, why and when learning is best achieved is a critical aspect of personal development and is emphasised in a range of programs that challenge students to think deeply about their own individual learning. Empowering students to recognise their own learning strengths and enabling them to develop strategies for maximising their learning also promotes and encourages development in social learning environments. Students are provided with opportunities that allow them to engage in critical and creative thinking, in the classroom and out in the community. Mercy values underpin curriculum and guide conversations about ethical issues. Today's globalised world means languages and intercultural understanding are invaluable. Students, through their journey at Mercy College, develop a respect and appreciation for cultural diversity. Relationships are nurtured at the College and restorative conversations develop reflective and empathetic young ladies. Students are taught to understand and manage their emotions so as to foster a sense of resilience.



OUR FIRST PEOPLES

Mercy College acknowledges the Wurundjeri people of the Kulin Nation as the Traditional Owners of the land on which our school is placed.

We are inspired and nurtured by the wisdoms, spiritualities and experiences of our First Nations Peoples. Together we work actively for reconciliation, justice, equity and healing.

VISIT US IN 2022

Open Days and School Tours are held on a regular basis throughout the year.

Please visit our website to register and view upcoming dates.

QUICK FACTS

- Cultural International and Interstate Immersion Trips
- Student Leadership (across all levels)
- Music Ensembles and Various bands
- Science Extension Programs
- SCSA Interschool Sport
- Camps and Retreats
- Freedom Readers
- Homework Club
- Chess Club
- STEM Club

GENDER

Girls

YEAR RANGE

Yr 7 - 12

ENROLMENT

500 students

YEAR 7

85 students
4 classes

LANGUAGES

Italian & Indonesian

FEES 2022

Yr 7 \$6,080
Yr 12 \$6,080

VCE UNITS 3/4

32

VET

Yes

UNI OFFERS

Contact the College

CONNECT VIA





Mount Lilydale Mercy College

Est. 1896

'Be your best.
Give your best.'

KEY INFORMATION

Address 120 Anderson St, Lilydale VIC 3140
Telephone 03 9735 4022
Website mlmc.vic.edu.au
Principal Philip A Morison
Enquiries Mrs Marilyn Ryan
Email registrar@mlmc.vic.edu.au

WHAT MAKES US SPECIAL

Founded in 1896, Mount Lilydale Mercy College (MLMC) is a leading Catholic school in Melbourne's outer east that is grounded in the Mercy tradition of faith, justice and service. Students enjoy a progressive, faith-based education across VCE, VCAL and VET with every student having the opportunity to gain the skills needed to be their best and give their best in life.

At MLMC, every student can experience success at learning and develop the confidence to thrive. We take pride in innovating every aspect of education — from flexible curricula to the latest learning technologies and spaces. Through this strong learning culture, we offer our students creative, flexible and meaningful opportunities to better learn and to be of service to the other.

BUILDING RESILIENCE

Emerging from very challenging global times, a key educational interest for parents is to know about how MLMC is building resilient students by preparing them to be strong, confident and decisive leaders of the future, and how students are learning to confront and emerge stronger from today's challenges.

Over the past five years, MLMC has embedded in Pastoral Care classes a resilience program. Creating a strong partnership with 'The Resilience Project', our Pastoral Care focuses on the core elements of gratitude, empathy and mindfulness. Students are encouraged to create the habit of calling on these three things when they are faced with difficulties in their life.

Although valuable at every level of schooling, we aim this program at our junior students to build their capacity to develop resilience and to better cope with changes and challenges they will face as they mature. Our resilience program is about giving them life-long skills that will assist them through the good and the bad times.

We are confident that we can help all of our students to build their resilience skills by showing them how to show empathy for others and recognise the good things that surround them, while acknowledging what it is that they are grateful for each day — something that can easily be overlooked in these challenging times.

We believe that if students can find an opportunity to be mindful each day, to be present in the moment, despite the busyness of school and family life, it will help them to reduce anxiety and improve wellbeing for themselves and all members of their family.

By teaching our students resilience through practicing three simple things a day, we believe we are creating young men and women who will be able to cope with life's challenges and become strong leaders in our community.



OUR FIRST PEOPLES

Mount Lilydale Mercy College acknowledges the Wurundjeri People as the Traditional Owners of the land on which our school is placed.

We are inspired and nurtured by the wisdoms, spiritualities and experiences of our First Nations Peoples. Together we work actively for reconciliation, justice, equity and healing.

VISIT US IN 2022

College tours are held fortnightly. Open Day will be held on Tuesday 29 March 2022.

Further details and bookings are available on our website.

QUICK FACTS

- Mercy Values – Compassion, Justice, Respect, Courage, Service and Hospitality
- Pastoral Care to support the whole person
- McAuley Campus for Years 7 to 9 and Barak Campus for Years 10 to 12
- Years 7 to 10 Literacy and Numeracy Intervention programs
- Careers Pathways Portal
- Winemaking and agriculture programs
- Learning Enhancement and Acceleration Program (LEAP)
- A range of cocurricular activities including the Young Farmers Club, Art Academy, debating and chess teams, bands, choirs, Tournament of the Minds, and College Musical
- EISM sports

GENDER

Co-educational

YEAR RANGE

Yr 7 - 12

ENROLMENT

1,500 students

YEAR 7

286 students
11 classes

LANGUAGES

Italian & Japanese

FEES 2022

Yr 7 \$6,960
Yr 12 \$6,960

VCE UNITS 3/4

40

VET

Yes

UNI OFFERS

93%

CONNECT VIA





Our Lady of Mercy College (OLMC)

Est. 1910

KEY INFORMATION

Address 52 Cape St, Heidelberg VIC 3084
Telephone 03 9459 2511
Website olmc.vic.edu.au
Principal Judith Weir
Enquiries Merri O'Halloran
Email mohalloran@olmc.vic.edu.au

WHAT MAKES US SPECIAL

At OLMC, we are particularly proud of our school climate and culture. Inspired by our Catholic faith and Mercy heritage, we are frequently blessed with and encourage many experiences of living generously and gratefully. Our College values of justice, compassion, courage and joy are alive and well.

We provide a safe and supportive environment for students to grow and thrive academically and socially. Our learning environments feature technology-rich spaces and purpose-built facilities for sport, the performing arts, science and design, art and technology. Our Centenary Building provides a wonderful introduction to OLMC for Year 7 girls.

Parents trust the College to nurture their daughter's wellbeing, enhance their learning and guide their aspirations for life beyond school. This trust produces very powerful interpersonal relationships that have a profound impact on students' learning.

Our staff are energetic, collegial, highly motivated educators who are passionate about learning, love teaching girls and are committed to their own professional growth.

BUILDING RESILIENCE

As we continue navigating a changing world we are so proud of how well our students are demonstrating their growing resilience. They have continued to reach out to each other and to 'show up', even at times when it would have been easier to give up. Our students have shown this through their focus on kindness, rising by lifting others and creating fun in difficult times – from podcasts to masked singer online events and creative online activities – they have continued to maintain a sense of community in times of uncertainty.

As a College we seek to build resilience in young people by maintaining a well-established and crucial relationship between wellbeing and learning success. Students are supported to demonstrate their commitment to their own personal excellence and continuous improvement and to challenge themselves through social action, community engagement and participation in a variety of activities.

Our broad curriculum, Year 9 Horizon program, focus on design thinking and collaboration, STEAM program, Arts opportunities, formal and informal leadership and student voice opportunities, and strong commitment to sport all allow our students to demonstrate the skills so critical to their lives ahead and beyond OLMC – adaptability, flexibility, patience, respect and the ability to deal constructively with uncertainty.

They are building resilience. They know that building resilience doesn't mean that you won't experience difficult life events, but rather that you are better able to cope with them when they do occur – they can adapt to change and approach difficulties and challenges as constructively as possible.



OUR FIRST PEOPLES

Our Lady of Mercy College acknowledges the Wurundjeri People as the Traditional Owners of the land on which our school is located. We are inspired and nurtured by the wisdoms, spiritualities and experiences of our First Nations Peoples. Together we work actively for reconciliation, justice, equity and healing.

VISIT US IN 2022

Regular tours (approx 90 minutes) provide an opportunity to meet the principal, explore the College and ask questions about the curriculum. For further information or for how to book please visit the College website or contact the College directly.

QUICK FACTS

- OLMC was founded by the Sisters of Mercy.
- It was founded in 1910.
- In the early years enrolments included primary students and boys.
- Our values are Compassion, Justice, Courage and Joy.
- Principal, Judith Weir, was awarded a Menzies School Leader Fellowship for 2021–2023.
- Students come from over 80 suburbs.
- OLMC is part of Girls' Sport Victoria.
- OLMC and Marcellin College run M2 junior and senior productions each year.
- Year 9 students participate in the Horizon Program.
- The four Houses are Mercy, McAuley, Loreto and Carmel.

GENDER

Girls

YEAR RANGE

Yr 7 - 12

ENROLMENT

1,200 students

YEAR 7

208 students
8 classes

LANGUAGES

Italian, French
& Japanese

FEES 2022

Yr 7 \$9,972
Yr 12 \$9,972

VCE UNITS 3/4

27

VET

Yes

UNI OFFERS

97%

CONNECT VIA





Parade College

Est. 1871

'A World of Opportunities'

KEY INFORMATION

Address **Bundoora Campus:**
1436 Plenty Rd, Bundoora VIC 3083
Preston Campus:
8 Clifton Gve, Preston VIC 3072
Telephone 03 9468 3300
Website parade.vic.edu.au
Principal Andrew Kuppe
Enquiries Kylie Hannam
Email enrol@parade.vic.edu.au

WHAT MAKES US SPECIAL

Families who choose our all-boys setting do so because they realise that boys learn in a specific manner and that Parade specialises in this field. An intentional focus on the intellectual, physical, social, emotional and spiritual development of our students sees Parade staff effectively address the complex nature of boys growing into responsible well-rounded men.

Parade offers:

- A caring environment through our pastoral House Tutor System where our boys are really well known
- The promotion of academic excellence
- A huge range of co-curricular opportunities
- Advanced Placement programs and associated scholarships
- Renowned Musical Productions and instrumental development
- Excellent facilities
- High Performance sport, together with a Sports Institute and Academy
- A specifically developed Social Justice Program
- VET and VCAL pathways in state of the art facilities
- Professional partnerships with Manchester City (The first Manchester Football School in Australia), Melbourne City, Northern Knights and Diamond Valley Basketball
- Direct entry Programs into Latrobe University and Victoria University.



OUR FIRST PEOPLES

Parade College acknowledges the Wurundjeri People as the Traditional Owners of the land on which our school is placed.

We are inspired and nurtured by the wisdoms, spiritualities and experiences of our First Nations Peoples. Together we work actively for reconciliation, justice, equity and healing.

VISIT US IN 2022

Family School Tours are run on a regular basis and can be booked via our Website

Our annual Open Day will be held on Sunday 13th Feb. 2022

QUICK FACTS

- Parade began over 150 years ago
- Around 360 students enrol across the 2 campuses each year
- 2024 enrolments close in August 2022
- Some of our top students begin in Yr 7 at our Preston Campus
- Parade is an RTO
- VCAL, VCE and VET combinations offered
- Both campuses well serviced by public transport
- The only Manchester City Football School in Australia will begin at Parade in 2022
- Parade students participate in a very broad range of extra-curricular activities
- Interstate and international travel options offered

GENDER

Boys

YEAR RANGE

Yr 7 - 12

ENROLMENT

1,900 students

YEAR 7

Preston 70 students
3 classes
Bundoora 290 students
10 classes

LANGUAGES

Italian, French
& Japanese

FEES 2022

Yr 7 \$6,719
Yr 12 \$7,100

VCE UNITS 3/4

40

VET

Yes

UNI OFFERS

96%

CONNECT VIA



BUILDING RESILIENCE

During its long history, Parade has aimed to create a safe and supportive learning environment for all of its students. The House Tutor has a very important role in this process and they operate as a key focal person for both their students and families on a 3-year basis to ensure student wellbeing.

Time is allocated each morning and during a full period each Friday, so that effective working relationships are established, and each student is well known and supported. Student progress is celebrated and a sense of belonging to both the wider Parade Community and one of the four Houses is promoted. It is through this meaningful connection to the College and the interesting programs on offer, that allows for choice and the enhancement of resilient and confident young students as they tackle challenges through structured problem-solving.

As well as gaining a sound education in a very supportive community, it is hoped that a graduate of Parade also has a keen sense of social justice as they mature into responsible, resilient and thoughtful young leaders.





Penola
CATHOLIC COLLEGE
EST. 1995

Penola Catholic College

Est. 1995

'Real Life Learning'

KEY INFORMATION

Address
Senior Campus:
29 Gibson St, Broadmeadows VIC 3047
Junior Campus:
35 William St, Glenroy VIC 3046
03 9301 2777
Website
penola.vic.edu.au
Principal
Chris Caldwell
Enquiries
Marketing and Development Officer
Email
marketing@penola.vic.edu.au

Telephone

Website

Principal

Enquiries

Email



OUR FIRST PEOPLES

Penola Catholic College acknowledges the Wurundjeri People as the Traditional Owners of the land on which our school is placed.

We are inspired and nurtured by the wisdoms, spiritualities and experiences of our First Nations Peoples. Together we work actively for reconciliation, justice, equity and healing.

VISIT US IN 2022

Penola Catholic College will host a number of Principal's tours in 2022 across both our Glenroy and Broadmeadows locations.

To be find our tour dates and times please like and follow us on Facebook.

QUICK FACTS

- Formed in 1995 after 3 former schools amalgamated
- The College name came from the strong link with St Mary MacKillop and the Sisters of St Joseph
- The Sisters of St Joseph ministered to the local community and lived on site from 1901 till the late 1980s.
- Project based learning (PBL) across Years 7, 8 and 9
- Year 8 Contemporary Learning Lab
- Specialised Year 9 Contemporary Learning building
- Accelerated studies program, allowing students to begin VCE studies in Year 10
- Content and Language Integrated Learning (CLIL)
- VET and VCAL subjects
- Onsite VET training facilities

GENDER

Co-educational

YEAR RANGE

Yr 7 - 12

ENROLMENT

1,500 students

YEAR 7

240 students
10 classes

LANGUAGES

Italian, Japanese & French

FEES 2022

Yr 7 \$3,050
Yr 12 \$4,140

VCE UNITS 3/4

33

VET

Yes

UNI OFFERS

89%

CONNECT VIA



WHAT MAKES US SPECIAL

Educators at Penola Catholic College design and deliver a learning and teaching landscape that is engaging and innovative, catering for 21st century learners.

Creating 'real life learners' is ensuring students are adaptive to an ever-changing world. This is achieved by ensuring we understand a student's individual needs and adapting learning to ensure students are working at their ideal level.

At Penola Catholic College, we provide for education to be a journey of curiosity where students develop a thirst for learning.

Our staff continuously plan and deliver contemporary curriculum practices to incorporate state of the art technologies that will enhance learning with infinite possibilities.

Beyond the classroom environment, we empower students to develop new skills to solve challenging problems they may encounter, collaborate effectively within their community, and express ideas in varying platforms inclusive of a digital lens.

We cultivate partnerships between educators and families that today's curriculum needs are to evolve to meet tomorrow's reality.

We offer a vast breadth of curriculum opportunities coupled with upon leaving formal schooling are prepared for careers and challenges to meet tomorrow's demands.

Reflective of a sizeable school, Penola Catholic College offers a vast range of subjects leading to a range of interests and future career paths that can be explored and developed.

Aesthetically, the students are immersed in an engaging learning environment that extends beyond the classroom with acres of outdoor facilities that yields inquisitiveness for our rich diverse learners.

BUILDING RESILIENCE

With the challenges faced by all of us over the last 2 years, the Penola Catholic College community has been able to able to successfully adapt to continue to deliver a quality Catholic education.

The College has always placed a strong emphasis on creating 'real life learners' and it has been through this, as well as our Catholic faith, that our students have been able to show a high level of maturity and resilience throughout a challenging time.





Sacré Cœur

Est. 1888

'Sacré Cœur Women Shape the World'

KEY INFORMATION

Address 172 Burke Rd, Glen Iris VIC 3146
Telephone 03 9835 2700
Website sac.vic.edu.au
Principal Ms Adelina Melia-Douvos
Enquiries Ms Julie Muldoon
Email admissions@sac.vic.edu.au

WHAT MAKES US SPECIAL

The transformation of heads, hearts and hands lies at the heart of a Sacré Cœur education. Our holistic approach to educating young women unites academic endeavour with deep care for each child.

Laughter, inclusivity, friendship and diversity of opportunity are evidenced in the girls' education. Students at Sacré Cœur feel a palpable sense of belonging and connection to their lived experience and benefit from a rich diversity of faiths within our community.

Our students learn from highly qualified and passionate teachers, many of whom are curriculum experts and VCE assessors. Our teachers embrace each child as an individual, meeting their learning and wellbeing needs; as a result, our young women flourish and achieve exceptional results.

Creative thinking is a cornerstone of a Sacré Cœur education, and we nurture this within each student, ensuring that they can see and solve the challenges of today and the future. We encourage students to gain a multidimensional view of the world through cross curriculum and cross year level learning.

Our new St Madeleine Sophie Barat Centre, opened in late 2021, further inspires our future thinkers, creators and problem solvers bringing together science, technology and creative arts, as well as a three-level resource centre under one roof.

We are privileged to belong to an international Sacred Heart family of over 150 schools across 41 countries. Our international family helps to grow our sense of community as we learn together through exchanges and engage in programs that support social justice initiatives locally and globally.

BUILDING RESILIENCE

Sacré Cœur women shape the world and have done so for over 130 years. Our students develop and possess an inner strength and clarity of purpose, engaging with others with courage and kindness. We are committed to supporting the emotional and social development of each student, and the delivery of our Pastoral Care program is central to this.

Pastoral Care is fundamental to the Sacré Cœur curriculum and, as such, is included in the Senior School timetable through our Cor Unum Program. We equip our students with knowledge, skills and experiential learning so that they develop the ability to navigate the challenges of school life and learn how to cope with pertinent issues facing adolescents at their particular age of development.

The program, which is based on best practice and accredited wellbeing frameworks, reflects the Sacré Cœur way, "Courage and Kindness", and is built on the 5 Ways to Wellbeing program developed by the Royal Melbourne Hospital – Connect, Be Active, Take Notice, Keep Learning, Give.



OUR FIRST PEOPLES

Sacré Cœur acknowledges the Wurundjeri People as the Traditional Owners of the land on which our school is placed. We are inspired and nurtured by the wisdoms, spiritualities and experiences of our First Nations Peoples. Together we work actively for reconciliation, justice, equity and healing.

VISIT US IN 2022

We look forward to welcoming you to Sacré Cœur during 2022.

Visit www.sac.vic.edu.au to book a school tour morning held frequently throughout each term.

QUICK FACTS

- 710 students
- 150 sister schools in 41 countries in which our students visit as immersion experiences
- 134 years old
- 125 student activities available including performing arts, debating and public speaking, robotics, sport, travel opportunities and more
- 20 Year 12 School Leaders
- 16 interschool sports played as part of Girls Sport Victoria with 24 member schools
- 16 music ensembles and choirs
- 6 outdoor and 2 indoor multi sports courts
- 4 partner schools
- 3 floors in our library

GENDER

Girls

YEAR RANGE

Prep - Yr 12

ENROLMENT

710 students

YEAR 7

84 students
4 classes

LANGUAGES

French & Japanese

FEES 2022

Prep \$4,905
Yr 12 \$28,065

VCE UNITS 3/4

33

VET

Yes

UNI OFFERS

100%

CONNECT VIA





Salesian College Chadstone

Est. 1957

'Inspire, Educate, Become Great Men'

KEY INFORMATION

Address **Bosco Campus:**
10 Bosco St, Chadstone VIC 3148
Mannix Campus (Yr 9):
Swanson Cr & Kelly St, Chadstone, VIC 3148

Telephone 03 9807 2644
Website salesian.vic.edu.au
Principal Mark Ashmore
Enquiries Michelle Collins
Email enrol@salesian.vic.edu.au

WHAT MAKES US SPECIAL

Established in 1957, Salesian College Chadstone is a Years 7 to 12 Catholic boys' school for over 1,000 students. With two campuses located on either side of the Monash Freeway, we're located on 25 acres in the heart of Chadstone.

A Salesian education is a journey that draws its inspiration from the spirituality and educational principles of our founder, St John Bosco. We welcome all boys and their families, celebrate diversity and promote relationships built on mutual respect. All in our community are treated as valued partners in laying the foundation for lifelong learning.

The education journey at Salesian College offers a host of academic, spiritual, social, cultural and sporting opportunities. We cater for students across the entire ability range, providing enrichment opportunities for academically gifted students, as well as comprehensive learning support programs.

Pastoral care is at the heart of all that we do at Salesian College, and we can be proud of our excellent record in supporting and nurturing students whilst they achieve the best they can through their secondary education.

Our recent building developments and advancements in curriculum communicate our commitment to progress, while our core pedagogical vision remains just as relevant as it was 65 years ago. Empowering young people to discover their own intrinsic goodness, while developing the skills and courage to express it in practical ways, is at the core of the Salesian Charism.

BUILDING RESILIENCE

At Salesian, we equip students with the skills they need to thrive as resilient learners. Our contemporary Learning Matrix curriculum approach aims to develop communication, collaboration and critical thinking skills.

Teachers at Salesian are invested in the holistic development of students, who see their teachers as mentors they can trust. "At Salesian, I am truly blessed to have strong bonds with my teachers. The teachers here are more than teachers. They are mentors, inspirations and mates", reflects 2021 College Captain Steven Tran.

As a specialist in boys' education, Principal Mark Ashmore understands that building resilience requires a holistic approach.

"It is an exciting challenge to prepare our boys with the skills and dispositions to adapt to change, be resilient, and to consider and value others so that they can contribute back to society.

When we focus on the holistic development of our young men, it helps them form their identity, build positive and respectful relationships and develop an optimistic approach to life."



OUR FIRST PEOPLES

Salesian College Chadstone acknowledges the Wurundjeri People as the Traditional Owners of the land on which our school is placed.

We are inspired and nurtured by the wisdoms, spiritualities and experiences of our First Nations Peoples. Together we work actively for reconciliation, justice, equity and healing.

VISIT US IN 2022

Register online for our Monday Morning School Tours (during the School Term), and Information Evening for Future Families via salesian.vic.edu.au/book-a-tour/

QUICK FACTS

- A Years 7-12 Catholic boys' school with over 1,000 students.
- A dedicated Year 9 Mannix Campus.
- Located on 25 acres in Chadstone.
- Learning Support Program values all abilities.
- Sports Academy Program for talented athletes.
- Biretta Enrichment Program for academically talented students.
- Becchi Year 7 Program for secondary school transition.
- Diverse school community includes over 80 nationalities.
- College values are Integrity, Respect, Belonging, Joy, Dynamism.
- Oratory Program develops holistic spiritual, emotional and social skills.

GENDER

Boys

YEAR RANGE

Yr 7 - 12

ENROLMENT

1,102 students

YEAR 7

174 students
7 classes

LANGUAGES

Chinese (Yr 7 - 11)
& Italian (Yr 7 - 12)

FEES 2022

Yr 7 \$7,130
Yr 12 \$7,960

VCE UNITS 3/4

29

VET

Yes

UNI OFFERS

99%

CONNECT VIA





Salesian College Sunbury

Est. 1927

'A Faith Community committed to Excellence in Learning.'

KEY INFORMATION

Address 1 Macedon St, Sunbury VIC 3429
Telephone 03 9744 0000
Website salesiansunbury.vic.edu.au
Principal Mark Brockhus
Enquiries Registrar - registrar@scr.vic.edu.au
Email Reception - hello@scr.vic.edu.au

WHAT MAKES US SPECIAL

At Salesian College Sunbury, we pride ourselves on preparing students for the future. We encourage them to strive in all aspects of life and inspire them to enthusiastically engage with the world around them for the purpose of making a difference.

Our supportive and nurturing environment fosters a relationship that recognises and celebrates the unique gifts and talents of every student. We are an innovative and caring faith community, committed to helping students strive in life.

We provide quality education in a community of faith and promote our school values of Community, Learning, Excellence and Faith throughout the classroom and everyday life.

We inspire our students to find and pursue ideas that matter, encouraging them to have a voice in all aspects of their learning.

Our students have access to a broad range of subjects, allowing them to move out of their comfort zone, be challenged, and open their minds to the potential in their future.

We believe that, given the opportunity and right environment, every student can strive for greatness. We recognise that each student is unique in their educational needs and academic abilities; our subjects range across study areas and we offer VCE, VCAL and VET study pathways to our senior students.

BUILDING RESILIENCE

Throughout the challenges of the last two years, we have been proud to remain connected and to prioritise quality learning and teaching during extended periods of remote learning.

Our dedicated staff embraced innovative ways of teaching and learning to ensure each student could continue to strive for excellence and be prepared for success in school and in life.

We approached this period with flexibility and optimism so that we could best support our students and broader community, while continuing to ensure they were able to achieve their goals.

The adaptive approach to learning and teaching – specifically around infrastructure, hardware, availability and connectivity – allowed us to build resilience among our community as we learned together to cope with rapid and significant changes.

At Salesian College Sunbury, we continued to empower students and promote the school values. We are proud to offer a diverse range of subjects and co-curricular opportunities for our students. Both students and staff demonstrated immense capacity for resilience as these programs were adjusted to suit the changing climate, while still delivering the opportunities for learning and development.



OUR FIRST PEOPLES

Salesian College Sunbury acknowledges the Wurundjeri People as the Traditional Owners of the land on which our school is placed.

We are inspired and nurtured by the wisdoms, spiritualities, and experiences of our First Nations Peoples. Together we work actively for reconciliation, justice, equity, and healing.

VISIT US IN 2022

Visit our website and see what makes us 'a home that welcomes' – view our virtual tour or book an onsite tour.

Year 7 2024 enrolments close Friday 19 August 2022.

QUICK FACTS

- Community – fostering a strong sense of belonging
- Learning – recognise the unique strengths of each student
- Excellence – opportunities for students and staff to excel
- Faith – encouraging resilience and thoughtfulness
- Inclusion – equal opportunities for all
- Diversity – a curriculum and environment to cater for all
- Innovation – committed to innovation in learning and teaching
- Adaptability – approaching change with optimism and flexibility
- Connectivity – prioritising connection and communication
- Empowerment – students enthusiastically engage in their education

GENDER

Co-educational

YEAR RANGE

Yr 7 - 12

ENROLMENT

1,500 students

YEAR 7

290 students
11 classes

LANGUAGES

Italian & Japanese

FEES 2022

\$6,800 (all year levels) + levies. Family discounts available

VCE UNITS 3/4

41

VET

Yes

UNI OFFERS

88%

CONNECT VIA





Santa Maria College

Est. 1904

'Dare to do as much as you are able'

KEY INFORMATION

Address 50 Separation St, Northcote VIC 3070
Telephone 03 9488 1630
Website santamaria.vic.edu.au
Principal Joanne Rock
Enquiries College Reception
Email registrar@santamaria.vic.edu.au

WHAT MAKES US SPECIAL

Santa Maria College is a dynamic Catholic secondary school for girls. In the tradition of the Good Samaritan Sisters, students are empowered to be fearless in their learning, to stand together on issues of equity, diversity and justice, and to take their rightful place in society. At Santa Maria we understand girls!

The Village Model:

Our *One Community*, Three Villages model for years 7-8, 9-10 and 11-12 ensures students are known as unique individuals and have access to programs designed specifically for them.

They feel a sense of belonging and are supported to unlock their full potential.

IB World School:

The International Baccalaureate Middle School Program enables girls in years 7-10 to discover their individual learning style, to receive grounding in the latest digital technologies and to situate their learning within a global perspective.

The IB/MYP is the platform from which our girls launch into their senior years of schooling.

Duke of Edinburgh Program:

This outstanding program builds confidence and important life skills.

Comprising physical challenges, emotional strength, team support and community service, Dukes encourages empathy and independence and the living out of Good Samaritan values.

BUILDING RESILIENCE

At Santa Maria each girl is guided on her resilience journey. Key to this is coming to know one's gifts and strengths.

Santa girls have wide-ranging leadership and extracurricular opportunities. Talents and skills are identified and developed.

Achievements and disappointments are celebrated and processed within the context of team and community support.

The College is renowned for its outstanding 'Santa spirit'!

This spirit has been centre stage over the last two years of extended lockdowns. Our students have used their proficiency in digital technologies to support one another in the most creative and thoughtful ways.

From student initiated podcasts to sublime music events from their living rooms, to lunchtime virtual cookoffs, to online interviews with well known journalists broadcast to the whole student body, our girls have been leaders in optimism and hope.



OUR FIRST PEOPLES

Santa Maria College acknowledges the Wurundjeri People as the Traditional Owners of the land on which our school is placed.

We are inspired and nurtured by the wisdoms, spiritualities and experiences of our First Nations Peoples. Together we work actively for reconciliation, justice, equity and healing.

VISIT US IN 2022

Visit us on one of our Discovery Tours. Learn about our unique programs and curriculum.

Visit our beautiful grounds and facilities. Meet our Principal and see our students actively engaged in learning.

QUICK FACTS

- Santa Maria was founded by the Sisters of the Good Samaritan in 1904
- Our Village Model is unique
- We offer the IB Middle Years Program
- Ranked in the TOP 13 Catholic Girls Schools
- Highest achievement rate of Gold Duke of Edinburgh Award in Victoria
- 2021 Median ATAR was 75.9 (State Median 68.14)
- 17.5% of Year 12 students achieved scores of 90+
- Over 40% of Year 12 students in the top 20% of the state
- Our students feel empowered to defy gender stereotypes
- Our Master Plan ensures ongoing innovation

GENDER

Girls

YEAR RANGE

Yr 7 - 12

ENROLMENT

900 students

YEAR 7

150 students
6 classes

LANGUAGES

Italian & Japanese

FEES 2022

Yr 7 \$7,720
Yr 12 \$7,720
Capital Levy (per family) \$625

VCE UNITS 3/4

28

VET/VCAL

Yes

UNI OFFERS

96%

CONNECT VIA





Sienna College

Est. 1940

*'Connecting girls,
empowering young women'*

KEY INFORMATION

Address 815 Riversdale Rd, Camberwell
VIC 3124
Telephone 03 9835 0200
Website siena.vic.edu.au
Principal Elizabeth Hanney
Enquiries Tracey Lawson
Email admissions@siena.vic.edu.au

WHAT MAKES US SPECIAL

Sienna College is a learning community. We are committed to providing a challenging, enriching and supportive education in which all students are encouraged to maximise their potential and develop into confident and articulate young women.

The learning program is designed to cater for the interests, needs and collaborative ways in which girls learn, guiding students to pursue their interests in any given field.

Sienna College students are surrounded by strong female role models, in both their peers and alumnae, who encourage them to strive to achieve successful outcomes from their own efforts.

Secure, respectful and confident relationships at school enhance our students' learning so they can experience a comprehensive and enriching education.

At Sienna College, we actively involve students in community activities and initiatives, and strive through all teaching and learning experiences to help our students learn the importance of their roles within our community and beyond the College gates. We actively seek to engage authentically with students so that their voices are heard.

The Sienna College Wellbeing Team, which includes the Deputy Principal Wellbeing, Heads of House, Director of Students and the College Counsellors, provides support and education for both students and parents.

BUILDING RESILIENCE

Staff at Sienna College work proactively to support the individual needs of all students and to build resilience alongside their social and emotional capacity.

Regular opportunities are provided for students to build positive strategies to cope with the stressors they have identified in their lives.

The Wellness Program is underpinned by approaches that focus on establishing and maintaining positive relationships and purpose, being self-aware and mindful, and practising self-care. These aspects contribute to the full flourishing of each student at Sienna. An important part of the learning process for our students is educating them to recognise when they need support and how to access this.

Empowering students to be resilient equips them with the skills to cope with the challenges of loss and change, and with the personal resources to make a difference in the world.

Antonella Rosati
Deputy Principal Wellbeing



OUR FIRST PEOPLES

Sienna College acknowledges the traditional owners of the sacred lands on which our school community stands and meets.

We know in our hearts and minds that their stories and spirits will always be written in this landscape. We honour and respect the custodians past, present and emerging and we are grateful for the opportunity to join with them in continuing to nurture this land, water and community.

VISIT US IN 2022

Join us for a Campus Tour or Open Morning in 2022 and discover how Sienna College can spark your daughter's possibility! Please visit our website for details.

QUICK FACTS

- Sienna is a Catholic school in the Dominican tradition.
- Our College motto, Veritas, means Truth.
- We are committed to student wellbeing and academic excellence.
- We offer an extensive cocurricular program.
- Our Pillars Leadership Program promotes student voice.
- Social justice initiatives are run throughout the year.
- Eco Warriors promote our sustainability goals.
- Sienna is a member of the FIRE Carriers Program.
- We were a 2021 Australian Education Award Finalist.
- We offer Equity Scholarships.

GENDER

Girls

YEAR RANGE

Yr 7 - 12

ENROLMENT

820 students

YEAR 7

115 students
5 classes

LANGUAGES

Chinese (Mandarin),
French and Italian

FEES 2022

Yr 7 \$13,420
Yr 12 \$14,990
(plus Capital Fee per family)

VCE UNITS 3/4

31

VET

Yes

UNI OFFERS

90%

CONNECT VIA





Simonds Catholic College

Est. 1996

'We get the best out of our boys'

KEY INFORMATION

Address **St Mary's 7-9 Campus:**
273 Victoria St, West Melbourne,
VIC 3003
St Brigid's 10-12 Campus:
20 York St, Fitzroy North, VIC 3068
Telephone 03 9321 9200
Website sccmelb.catholic.edu.au
Principal Peter Riordan
Enquiries Registrar
Email info@sccmelb.catholic.edu.au

WHAT MAKES US SPECIAL

Situated across two campuses in the heart of Melbourne, Simonds Catholic College is in the unique position of being the only Catholic boys' school on the doorstep of the CBD.

We deliberately limit our class sizes and this translates to increased learning opportunities for our students and big opportunities for your son. Simonds' close proximity to the inner city means we are able to take advantage of the many excellent cultural and sporting facilities to support and enhance learning. Our teachers are experts in knowing how to reach and teach boys and help them succeed beyond anyone's expectations – even their own. Research shows the importance of wider reading in the development of crucial cognitive skills, expanding vocabulary and developing general knowledge. This is why we introduced the Reading Equals Power (REP) program. Our Year 7-9 students read novels of their choice during scheduled sessions and their efforts are celebrated through the presentation of awards for "most improved", "most books read" and "most quiz points scored". Our boys' reading habits have changed dramatically. Reading really does give students power in the classroom and power in life.

FOLLOWING OUR ACQUISITION OF A MULTI STOREY BUILDING ON CHETWYND ST AND THE COMPLETION OF REFURBISHMENT OF EXISTING AREAS, WE ARE THRILLED TO ANNOUNCE THAT SIMONDS CATHOLIC COLLEGE WILL BECOME ONE SCHOOL ON ONE CAMPUS. BY 2023, ALL STUDENTS ACROSS YEAR 7-12 WILL BE BASED AT OUR WEST MELBOURNE SITE IN THE HEART OF THE CITY.

BUILDING RESILIENCE

Resilience is something that comes naturally to many of our boys. There is a strong sense of getting on with the job at hand and focusing on what needs to be done in the present, with little overthinking or putting too much emphasis on past difficulties or problems.

Behavioural mishaps are dealt with firmly, fairly and expediently so that a lesson can be learned, but not to the detriment of the self esteem of the boy. A matter of fact approach, whereby discipline is metered out as natural consequences to poor behaviour, means that emotion and embarrassment are kept out of the equation and the dignity of the boy is kept intact. He is free to move on without stigma and that makes bouncing back, the mainstay of resilience, much more likely.

Resilience is fostered by staff who put high value on the relationships formed with the boys. When boys feel supported by their teachers, they are more willing to stretch out of their comfort zone and take a chance in more challenging endeavours.

Pivotal to this is that when mistakes are made they are seen not only as a natural part of learning and growing up, but where learning and growth actually occur. An understanding that they are respected for their efforts makes trying much easier and is the environment ideal for personal development.



OUR FIRST PEOPLES

Simonds Catholic College acknowledges the Bunurong Boon Wurrung and Wurundjeri Woi Wurrung peoples of the Eastern Kulin Nation - Wurundjeri People as the Traditional Owners of the land on which our school is placed.

We are inspired and nurtured by the wisdoms, spiritualities and experiences of our First Nations Peoples. Together we work actively for reconciliation, justice, equity and healing.

VISIT US IN 2022

Tours are conducted throughout the term and provide prospective families with a great opportunity to see our programs for boys in action. Book via our website or contact the Registrar.

QUICK FACTS

- St Mary's 7-9 Campus is 2 blocks from the Queen Vic Market.
- Easily accessible by public transport with tram stops on our doorstep.
- Our boys come from over 40 primary schools.
- Small school where everyone is known.
- The Principal knows every student by name.
- Member of the ACC (Associated Catholic Colleges) offering multiple sporting and extra curricular opportunities.
- Food Technology is our most popular elective.
- Music, Drama, Chess clubs run at lunchtime.
- We share some senior classes with Academy of Mary Immaculate.
- 80% of our Year 10s study a VCE Unit 1 & 2.

GENDER

Boys

YEAR RANGE

Yr 7 - 12

ENROLMENT

420 students

YEAR 7

76 students
4 classes

LANGUAGES

Italian & Japanese

FEES 2022

Yr 7 \$4,650
Yr 12 \$5,700

VCE UNITS 3/4

36

VET

Yes

UNI OFFERS

98%

CONNECT VIA





ST ALOYSIUS
NORTH MELBOURNE 1887

St Aloysius College

Est. 1887

'Strive for Higher Things'

KEY INFORMATION

Address
Main Campus:
31 Curran St, North Melbourne VIC 3051
Torquay Campus:
41 Price St, Torquay VIC 3228
03 9325 9200
Telephone
Website
aloysius.vic.edu.au
Principal
Mary Farah
Enquiries
Antoinette Martelli
Email
registrar@aloysius.vic.edu.au

WHAT MAKES US SPECIAL

We firmly believe that what truly makes St Aloysius very special is the genuine partnership we have with the parents of our students and the work we tirelessly pursue to ensure that this partnership is positive for all concerned.

The partnership is centred on knowing each child and knowing each family personally, something not possible in schools with larger student populations. St Aloysius College is a school that parents trust and where students flourish.

Our teachers are caring and highly skilled, balancing academic rigor with pastoral care; they invest not only in the academic success of each child but also in each child's wellbeing. We encourage our teachers to be innovative, to be bold, to be lifelong learners and to set ambitious goals for our students.

Our school is a place of strong friendships, where students have daily interactions with those in different age groups and work together on academic projects and artistic initiatives.

Our modern and well-resourced learning spaces encourage academic endeavour and reflect the care and pride students and staff have in their school. We provide individual academic and personal support, with outstanding programs in areas as diverse as STEM, drama, sports and the visual arts.

We believe that every child has the potential to excel, and we tailor our curriculum to support and challenge all students to find their ambition and strive for higher things. We address the diversity of student needs through differentiated pedagogical practice, without compromising standards. Our students are encouraged to have a global perspective, with sister-school opportunities in Europe and Asia, as well as various worldwide social justice initiatives.

We believe that a real education is more than academic results and we value and actively support the development of our students' talents in all areas, developing an educational experience within which all students can meet their very highest standards.

BUILDING RESILIENCE

The underlying approach by all staff at St Aloysius College in developing our students' resilience is to create a strong sense of belonging.

Our students are supported to build deeper connections with their school through various wellbeing programs, co-curricular activities, social justice projects and community-based initiatives that promote positive interactions and social connections.

It is this nurturing environment that empowers all St Aloysius students to understand themselves, reflect and to set goals that support them to achieve their own individual version of success.



OUR FIRST PEOPLES

St Aloysius College acknowledges the Wurundjeri People as the Traditional Owners of the land on which our school is placed.

We are inspired and nurtured by the wisdoms, spiritualities and experiences of our First Nations Peoples. Together we work actively for reconciliation, justice, equity and healing.

VISIT US IN 2022

Join us for a campus tour to explore our Curran Street Campus, meet our leadership team and learn more about our inspiring curriculum and transition to co-education in 2023. Bookings can be made at www.aloysius.vic.edu.au

QUICK FACTS

- Underpinned by culture of wellbeing and respect for the individual
- In 2023, St Aloysius College begins its transition to co-education
- Sister schools in Kyoto, Milan and Geneva
- Annual College Musical Production
- Member of the Association of Co-Educational Schools (ACS) Sports Competition
- Co-Curricular Programs include Debating, Chess, Journalism
- School-owned camp facility in Torquay
- School-owned fully-equipped Gymnasium
- Annual Art & Technology Exhibition
- Year 7 Instrumental Music Program

GENDER

Girls,
Co-Ed Year 7 2023

YEAR RANGE

Yr 7 - 12

ENROLMENT

450 students

YEAR 7

63 students
3 classes

LANGUAGES

Italian, Japanese
& French

FEES 2022

Yr 7 \$6,660
Yr 12 \$6,660

VCE UNITS 3/4

25

VET

Yes

UNI OFFERS

99%

CONNECT VIA





St Bede's College

Est. 1938

'Be a light for the world'

KEY INFORMATION

Address
Mentone Campus:
 2 Mentone Pde, Mentone VIC 3194
Bentleigh East Campus:
 156 Bignell Rd, Bentleigh East VIC 3165
Phillip Island Campus:
 73 Beachcomber Ave, Smiths Beach VIC 3922
 03 9582 5999
Telephone
Website
 stbedes.catholic.edu.au
Principal
 Deborah Frizza
Enquiries
 Debra Campion
Email
 enrol@stbedes.catholic.edu.au

WHAT MAKES US SPECIAL

St Bede's College is a Catholic secondary school founded within the Lasallian tradition. St John Baptist de La Salle began a number of schools after seeing a need to educate boys and young men who were the most vulnerable in their society.

He understood that education was the path to freedom and responsibility. He was both a brilliant educator and a pragmatist, believing that the education of minds and hearts was essential for learning and life.

From such beginnings a large network of Lasallian schools formed, now educating more than one million students worldwide.

St Bede's College began in 1938 as one such school. It has since become a well-known, loved and iconic place. It has always been a place of welcome for boys and their families from South Eastern Melbourne.

In 2021, we established a second campus which is known as St Bede's College, Bentleigh East. The population in 2021 is around 1940 students across the two campuses. Set priority Parishes are allocated to each campus of the College.

We offer a Christian education, one that inherently believes that boys can become young men who are prayerful, contemplative, socially just and aware that they are part of a global society.

We are an inclusive community where students have the right to be safe, valued, challenged and respected by all. We also believe that such respect carries mutual responsibility for others as part of our College family. Strong pastoral care links between the student, family and school are a hallmark of the College. St Bede's College thrives on the concept of community where we are brothers and sisters to one another.

BUILDING RESILIENCE

Our motto is Per Vias Rectas (By Right Paths). It is important that young men have a strong set of values that underpin the way they live. We live those values by respecting and honouring our heritage while looking with imagination to the future.

The welfare of students at St Bede's College is paramount. Each student is entitled to the opportunity to participate, learn and achieve his best. The pastoral care structure of the College aims to support students through their time at St Bede's.

At St Bede's College, learning is underpinned by the Lasallian values of Faith, Service and Community. Our curriculum programs seek to affirm the intrinsic worth of each student in our care and recognise the importance of connecting with others as we learn.

We see it as integral to the school's mission to provide opportunities for all students to succeed.



OUR FIRST PEOPLES

St Bede's College acknowledges the Bunurong People of the Kulin nation as the Traditional Owners of the land on which our school is placed. We are inspired and nurtured by the wisdoms, spiritualities and experiences of our First Nations Peoples. Together we work actively for reconciliation, justice, equity and healing.

VISIT US IN 2022

You are most welcome to visit us to see if your son may benefit from an education at St Bede's College.

Open Days for 2022
 Mentone: Tuesday 2 March 2022
 Bentleigh East: Tuesday 16 March 2022

QUICK FACTS

- Largest Secondary Catholic Boys school in Melbourne's South East 3 campus College; Mentone, Bentleigh East and Phillip Island
- Inclusive community where students have the right to be safe
- Welfare of students at St Bede's College is paramount
- Teachers are models of lifelong learners and a proportion of the staff are past students
- Motto is Per Vias Rectas (By Right Paths)
- Rich curriculum spanning sport, music, band, debating, musical performance, public speaking, community service, VET and much more
- Strong, active Old Collegians Community
- Long established Parents and Friends network

GENDER

Boys

YEAR RANGE

Yr 7 - 12

ENROLMENT

1,950 students

YEAR 7

352 students
 11 classes

LANGUAGES

Italian & Indonesian

FEES 2022

Yr 7 \$8,030
 Yr 12 \$7,730

VCE UNITS 3/4

53

VET

Yes

UNI OFFERS

N/A

CONNECT VIA

Visit our website



St Bernard's College

Est. 1940

'Achieving Excellence By Learning and Doing'

KEY INFORMATION

Address 41 Rosehill Rd, West Essendon VIC 3040
Telephone 03 9289 1000
Website sbc.vic.edu.au
Principal Dr. Michael Davies
Enquiries John Nocci
Email registrar@sbc.vic.edu.au

WHAT MAKES US SPECIAL

At St Bernard's College, we are committed to education that helps young men to become co-creators of their world.

Education that encourages the cultivation of an inner fire and generates autonomy from the demands and promises of our dominant culture.

We are guided by the EREA Touchstones, which we incorporate into every aspect of the College life.

We instil the values taught by the Blessed Edmund Rice in a modern way while maintaining the core principles of his teachings, empowering our students to apply these teachings to their everyday life.

2021 amplified the challenges we experienced in 2020. As a College, we continued to innovate to overcome day to day obstacles and focused on ensuring the delivery of remote learning to our Students, was tailored to each and every one.

We believe that inclusion and the support of the marginalised and disenfranchised of the world is core to the Gospel and the Catholic vision of education.

BUILDING RESILIENCE

As we have navigated the COVID landscape during 2020 and 2021, the College has actively ensured our students have been provided the tools to build resilience.

The College has provided many different workshops and resources to ensure we have catered to all learning types.

Building resilience for the most part comes from within, providing a safe and welcoming environment for our young men to explore their personal resilience, and seek further support where they feel the need, is core to ensuring our young men are the best versions of themselves.

In addition, our Immersion Experiences at the College are designed to provide students a myriad of perspectives from different cultures, offering our students a chance to explore different aspects and approaches to resilience.

Our young men learn to confront and emerge stronger from today's challenges.

Ultimately, this empowers our students to shape their own destiny and seek out future pathways to make this a better world, for everyone.



OUR FIRST PEOPLES

St Bernard's College acknowledges the Wurrundjeri People as the Traditional Owners of the land on which our school is placed.

We are inspired and nurtured by the wisdoms, spiritualities and experiences of our First Nations Peoples. Together we work actively for reconciliation, justice, equity and healing.

VISIT US IN 2022

Regular tours for prospective families are held throughout 2022.

For more information please visit our website.

QUICK FACTS

- Student Leadership Council
- Immersion Experiences
- Urban Experience
- Student Wellbeing Action Team (SWAT)
- ACC Competitions
- Partnerships with elite sports institutes
- St Bernard's Baccalaureate
- Able & Ambitious program
- An inclusive environment
- Santa Monica Experience

GENDER

Boys

YEAR RANGE

Yr 7 - 12

ENROLMENT

1,625 students

YEAR 7

280 students
10 classes

LANGUAGES

Italian & Japanese

FEES 2022

Yr 7 \$8,759
Yr 12 \$9,336
Other fees & levies may apply

VCE UNITS 3/4

40

VET

Yes

UNI OFFERS

76.75%

CONNECT VIA





St Joseph's College, Ferntree Gully

Est. 1965

'Leaders in Boys' Education'

KEY INFORMATION

Address	5 Brenock Park Dr, Ferntree Gully VIC 3156
Telephone	03 9758 2000
Website	stjosephs.com.au
Principal	Cathy Livingston
Enquiries	Principal's Office 9756 3112 (Enrolments)
Email	enrolments@stjosephs.com.au



OUR FIRST PEOPLES

St Joseph's College, Ferntree Gully acknowledges the Wurundjeri People as the Traditional Owners of the land on which our school is placed.

We are inspired and nurtured by the wisdoms, spiritualities and experiences of our First Nations Peoples. Together we work actively for reconciliation, justice, equity and healing.

VISIT US IN 2022

We invite you to give us the opportunity to show you what we can offer your son.

Visit us online and book a tour. It would be a privilege to meet you.

QUICK FACTS

- 2020 VCE Median 32 (in the top four Catholic Boys Colleges)
- ACC (Sport, Debating, Culinary, Music, Chess, Arts and Technology)
- Valdocco Program (Specialised Year 9 Program)
- LEAP (Specialised Year 7 Program) and LANE (Literacy and Numeracy Enhancement)
- International Cultural Experiences, Outdoor Education and Camps
- STEM, Robotics and Digital Technology
- GATE (Gifted and Talented Education) and High-Performance Sports Program
- Performing Arts and College Musical
- Lead school in Respectful Relationships
- Lighthouse Program and Homework Program

GENDER

Boys

YEAR RANGE

Years 7-12

ENROLMENT

1,000 students

YEAR 7

180 students
7 classes

LANGUAGES

Italian & Japanese

FEES 2022

Years 7-12 \$9,425

VCE UNITS 3/4

45

VET / VCAL

Yes

UNI OFFERS

95+%

CONNECT VIA



WHAT MAKES US SPECIAL

St Joseph's College focuses on academic excellence without losing sight of the importance of values, social justice and the development of life skills. Our motto, "Agite Quae Didicistis", translated as "put into practice what you have learnt", underpins our daily approach to a holistic education for boys in the 21st century. St Joseph's College specialises in boys' education and understands the varying needs of boys growing up in the 21st century. We apply innovative and progressive teaching methods to maximise boys' engagement. Our curriculum is designed specifically to cater for boys' needs with a 'hands on' approach to learning. We have a renowned Year 9 program known as 'Valdocco', which focuses on respect, responsibilities, relationships and rehearsal. We offer 24 elective subjects in Year 9, including viticulture, animal husbandry, advanced health and fitness, cycle cross, advanced mathematics and music 'noiseworks'. There are several programs and opportunities offered to our students. One of these programs is our Life Skills program which teaches boys how to become responsible and honest citizens within and beyond their community. Our students are equipped with iPads and MacBooks from the beginning of their journey through St Joseph's College. We also offer an advanced sports program with 15+ sports on offer, after school tuition for all students four nights a week and six international experiences per year. The teacher-student, teacher-family and student to peer relationships cultivated at the College are what truly sets St Joseph's College apart. Teaching respect within relationships is what prepares our boys for life.

BUILDING RESILIENCE

As we begin 2022, the College continues to be both proactive and responsive to a rapidly changing world through our policies, programs and practices which build resilience in our young men. The quality of the relationships which exist between our staff, students and families is imperative in ensuring that the outcomes for our boys are of the highest quality. Our Masterplan, 'Towards 2040 and Beyond – An Adventure in the Spirit', addresses issues associated with 21st century learning. Preparing students for the future means that we are continually planning for the future – a future in which your son will thrive. State of the art STEM, Digital Technologies, Visual and Performing Arts, Science and Year 7 learning spaces will open in 2022. A new Senior Building will house our Year 11 and 12 students where they will enjoy modern classrooms and learning hubs in areas dedicated to each year level. The development of our high-performance sports precinct is underway and will enhance the incredible sporting facilities enjoyed by students today. We offer the best of both worlds at St Joseph's College. We have an outstanding VCE pathway and an impressive VCAL pathway with vocational and trade options taking place on campus and in external settings. We prepare boys for their life journey. We are experts in boys' development focusing on the growth of each boy's academic skills, faith and spirituality, relationships, and physical and emotional wellbeing.





St Mary's College

'Co-education to thrive'

KEY INFORMATION

Address **Edmund Rice Campus:**
11 Westbury St, St Kilda East VIC 3183
Presentation Campus:
187 Dandenong Rd, Windsor VIC 3181
03 9529 6611
Telephone www.stmaryscollege.vic.edu.au
Website Terry Blizzard
Principal Leah Mason
Enquiries enquiries@stmaryscollege.vic.edu.au
Email



OUR FIRST PEOPLES

St Mary's College acknowledges the Boon Wurrung People of the Kulin Nation as the Traditional Owners of the land on which our school is placed.

We are inspired and nurtured by the wisdoms, spiritualities and experiences of our First Nations Peoples. Together we work actively for reconciliation, justice, equity and healing

VISIT US IN 2022

Meet our students and staff and tour our College campuses.

Visit <https://www.stmaryscollege.vic.edu.au/enrolments/college-tours>

QUICK FACTS

- We are inner Melbourne's only co-educational Catholic College since 2021
- We are inclusive and welcoming of all cultures and faiths
- We are an Edmund Rice School
- Formerly CBC St Kilda, we draw upon over 145 years of tradition
- We are a Respectful Relationship partner school
- We have a strong focus on social justice and believe in making a better world for all
- Conveniently located near Windsor Station, trams, and buses
- Our Alumni network embraces St Mary's College, CBC and PCW

GENDER

Co-educational

YEAR RANGE

Yr 7 - 12

ENROLMENT

525 students

YEAR 7

95 students
4 classes

LANGUAGES

Italian & Japanese

FEES 2022

Yr 7 \$9,706
Yr 12 \$10,129

VCE UNITS 3/4

27

VET

Yes

UNI OFFERS

N/A - 2021 first
Yr 12 cohort

CONNECT VIA



WHAT MAKES US SPECIAL

We are a school for all, welcoming, nurturing and empowering all students.

St Mary's College is inner Melbourne's only Catholic co-educational secondary school.

Our values of respect, justice, compassion, inclusivity and courage guide our teaching and support of students. Girls and boys at St Mary's College learn together in an environment of respect, excellence, enquiry, challenge and fun. Our learning environment reflects the world beyond the classroom.

Our College offers a mix of modern learning environments and historic architecture that provides a physical link to our history and Catholic traditions of Edmund Rice and Nano Nagle.

Our two adjoining campuses work as one. Year levels have a home base at one campus and have the flexibility to access specialised learning areas and excellent facilities, such as our beautiful oval and indoor swimming pool at the Edmund Rice Campus and Textiles, and Food Technology at the Presentation Campus.

Nobilitas Program

Year 9 at St Mary's College is an exciting experience of collaborative learning where positive relationships, student voice and real-world thinking are prioritised. Relationships are at the core of Year 9, a catalyst that motivates our students as they enter the critical phase of middle adolescence.

We explore relationships with one another; relationships with family and community and most importantly relationship with self. Throughout the year we connect students with the wider community in rich and meaningful ways, working with local councils, and community groups, Indigenous groups and voluntary organisations. It is a truly transformative year. Our students are based in a dedicated state of the art learning area at the Presentation Campus.

BUILDING RESILIENCE

The size of our College allows all students to be known and develop a deep sense of belonging to our community. Our students are active participants in their learning, who are empowered to think and act for themselves. We nurture a love of learning inspiring each student to achieve their best. Our contemporary learning practices offer immersion opportunities within and outside the classroom to apply learning to the real world.

Part of the Respectful Relationships Schools Network we provide a whole school approach to a safe and respectful culture for all. Our students are challenged and empowered to build a just world for all applying our Catholic values of compassion, justice and peace, enacted within our community.





St Monica's College, Epping

Est. 1964

'A School of Educational Enterprise'

KEY INFORMATION

Address Yr 10 - 12: 16 Davissan St, Epping VIC 3076
Yr 7 - 9: 400 Dalton Rd, Epping VIC 3076
Ostia (Country Campus):
Falls Rd, Strath Creek VIC 3658
Telephone 03 9409 8800
Website stmonicas-epping.com
Principal Brian Hanley OAM
Enquiries College Registrar
Email registrar@stmonicas-epping.com

WHAT MAKES US SPECIAL

St Monica's College, Epping is a School of Educational Enterprise, thus educating for the future is something that we as College do so well.

Courses of study are designed with a future-focus. These are contemporary courses based on sound pedagogical practices.

An immensely comprehensive and diverse range of VET courses are taught, located on College grounds. In VET Allied Health, students are being prepared for jobs in the medical industry and, along with VET Community Service, students are being educated to work in all facets of medical and health areas. This includes areas such as advanced nursing skills for the future, readiness to work in the aged care industry, and understanding of a wide range of medical treatments and techniques.

Female and male students are well prepared through VET Automotive Studies, thereby breaking down artificial employment barriers for the future. Similarly, our VET Integrated Technologies curriculum is ensuring that both boys and girls are on top of the ever-expanding career opportunities across many engineering-associated jobs. STEM is an important area of study with a wide variety of relevant studies available to boys and girls. We actively encourage our students to embrace STEM learnings to prepare them for the modern workplace.

At St Monica's College, Epping, every student matters, every moment counts.

BUILDING RESILIENCE

At St Monica's College, Epping we understand that students will face challenges during their education and as they move onto their next stages of life at university or work. Therefore, it is paramount that the students are given the opportunity to develop life skills that will enable them to meet those challenges and thrive.

St Monica's College's motto, 'Pray and Persevere,' is a testament to how hard Monicans work at achieving their goals and to become better people. We are committed to serving Catholic Education today and tomorrow.

Students are encouraged to participate in cocurricular programs such as 'Be More,' a project highlighting the importance and impact of social issues facing society. The College's Country Campus, Ostia, located in Strath Creek, is used to allow students time to for reflection with the addition of learning basic life skills, such as cooking, cleaning and general maintenance, to better prepare them for independent living. During stays at this campus, students learn to cooperate with each other through team building exercises to enhance friendships and build healthy relationships.

St Monica's College is dedicated to the young people of the northern suburbs of Melbourne and we will continue to develop Monicans who are able to navigate life's challenges and prosper.



OUR FIRST PEOPLES

St Monica's College, Epping acknowledges the Wurundjeri People as the Traditional Owners of the land on which our school is placed.

We are inspired and nurtured by the wisdoms, spiritualities and experiences of our First Nations Peoples. Together we work actively for reconciliation, justice, equity and healing.

VISIT US IN 2022

Morning Tea with the Principal (College tours of the Junior Campus) are held regularly throughout the year during school time.

To book a tour please visit our website.

QUICK FACTS

- 'HORIZONS' Accelerated Learning Program
- 'Arrunga' Educational Support Faculty catering for students with autism
- St Monica's College 'Careers' Program
- Construction of two buildings on the Dalton Road Campus
- Extensive professional sporting fields
- Two elite sporting programs, Athlete Development Program (ADP), and Talent Identification and Development (TID) Program.
- Architectural design winning libraries on both campuses
- Three campus structure
- Homestay program with Takada High School, Japan
- More than 88 co-curricular activities

GENDER

Co-educational

YEAR RANGE

Yr 7 - 12

ENROLMENT

2,050 students

YEAR 7

385 students
14 classes

LANGUAGES

Italian, French, Japanese, Spanish & Modern Greek

FEES 2022

Yr 7 \$7,420
Yr 12 \$8,530

VCE UNITS 3/4

53

VET

Yes

UNI OFFERS

85%

CONNECT VIA





Star of the Sea College

Est. 1883

'Facta Non Verba'

KEY INFORMATION

Address **Main Campus:**
Martin St, Brighton VIC 3186
Year 9 Campus:
North Rd, Brighton VIC 3186
Telephone 03 9595 9595
Website starmelb.catholic.edu.au
Principal Mary O'Connor
Enquiries Elaine Tebbutt
Email registrar@starmelb.catholic.edu.au



OUR FIRST PEOPLES

Star of the Sea College acknowledges the Bunurong People as the Traditional Owners of the land on which our school is placed. We are inspired and nurtured by the wisdoms, spiritualities and experiences of our First Nations Peoples. Together we work actively for reconciliation, justice, equity and healing.

VISIT US IN 2022

As stage one of the Masterplan, the *Heritage Project*, will be complete early Semester 1, we look forward to recommencing College tours and visits throughout 2022.* For more information on the Heritage Project, please email: heritageproject@starmelb.catholic.edu.au. *Subject to Government Legislation

QUICK FACTS

- Sports across 4 terms as part of GSV
- Stacella – A Cappella and Competition Choirs, Bands and Music Ensembles, and Irish Dancing
- Drama / Music Festival / Musical / Production / Backstage Crew
- Debating
- Outreach – Soup Van / Friday Night Tutoring / Sacred Heart Mission / St Kilda Mums
- Academic Competitions
- Environmental Activities
- Great Victorian Bike Ride (COVID-19 permitting)
- Writers Collective / Write a Book in a Day
- Study Tours – NASA / New York Arts Tour / China Humanities Tour (COVID-19 permitting)

GENDER

Girls

YEAR RANGE

Yr 7 - 12

ENROLMENT

1,200 students

YEAR 7

200 students
8 classes

LANGUAGES

Japanese, German & Italian

FEES 2022

Yr 7 \$11,600
Yr 12 \$13,950

VCE UNITS 3/4

41

VET

Yes

UNI OFFERS

100%

CONNECT VIA



WHAT MAKES US SPECIAL

Armed with empathy, collaboration, cooperation and critical-thinking skills, we strive to prepare our students to achieve their potential and be change agents for a better world.

In doing so, they are able to build resilience and succeed during times of adversity, whilst living out the College motto: 'Deeds not Words'.

The Catholic religion is foundational in the spirituality and religious life of the College. Students are encouraged to live out Christian values and to explore and deepen their personal spirituality and relationship with God in the spirit of Nano Nagle and the Presentation Sisters.

Star of the Sea College encourages students to strive and excel. VCE results growth over the past decade has been formally recognised through the Age 'Schools that excel 2020 southern Melbourne (non-government)', and the Herald Sun Better education VCE catholic school ranking of 6th in the state.

Every Star of the Sea College student is encouraged, supported and tries their very best, not just for herself but for the wider world.

BUILDING RESILIENCE

Star of the Sea College education is one that fosters in students a strong sense of connectedness, whether it be face-to-face or virtually, as evidenced throughout the past two years during the pandemic.

Individual achievement is acknowledged through formal ceremonies. All students are encouraged to try their very best, learn from their mistakes and keep trying.

Building resilience and promoting a growth mindset for all in the community enhances student learning and, therefore, student resilience.

Whilst supporting our students and staff in their learning and teaching objectives, great focus is placed on the wellbeing of our students, and at the heart of our support network is a wellbeing framework that encourages partnership between students, staff and parents/guardians to enhance a sense of purpose and belonging, and to boost resilience.

Our supportive staff take a professional yet personable approach to the social and emotional wellbeing of every student.





Whitefriars College

Est. 1961

'Belong. Believe. Become.'

KEY INFORMATION

Address 156 Park Rd, Donvale VIC 3111
Telephone 03 9872 8200
Website whitefriars.vic.edu.au
Principal Mark Murphy
Enquiries Linda Dingley
Email enrolments@whitefriars.vic.edu.au



OUR FIRST PEOPLES

Whitefriars College acknowledges the Wurundjeri People as the Traditional Owners of the land on which our school is placed. We are inspired and nurtured by the wisdoms, spiritualities and experiences of our First Nations Peoples. Together we work actively for reconciliation, justice, equity and healing.

VISIT US IN 2022

Open Day
Sunday 6 March
Open Morning Tours – 9am
Monday 4 April
Monday 2 May
Friday 20 May
Monday 30 May
Monday 25 July
Monday 8 August
Friday 12 August
Monday 15 August

QUICK FACTS

- Governed by the Carmelites.
- Valuing community, contemplation and service.
- Set on over 19 hectares of natural bushland, adjoining the Mullum Mullum Creek.
- House-based Vertical Pastoral Care structure.
- Individually tailored Literacy and Numeracy programs.
- Academic, Sport, Performing Arts, English and Sustainability/ Environment clubs.
- Offering a wide range of senior pathways inc. VCE/VET/VCAL.
- Multi-purpose courts, sports pavilion and change rooms opening mid-2022.
- The Resilience Project partner.
- Council of International Schools accredited.

GENDER

Boys

YEAR RANGE

Yr 7 - 12

ENROLMENT

1,100 students

YEAR 7

208 students
8 classes

LANGUAGES

Indonesian, Italian
& Mandarin

FEES 2022

Yr 7 \$12,570
Yr 12 \$13,990

VCE UNITS 3/4

33

VET

Yes

UNI OFFERS

77%

CONNECT VIA



WHAT MAKES US SPECIAL

When the Carmelites decided to build a school for boys in Donvale in 1961, they had a clear vision in mind; that our College identity would be shaped and influenced by our Catholic Carmelite tradition, founded on the pillars of contemplation, community and service. It is our hope and prayer that each Whitefriars boy will grow to become a reflective, compassionate, community-minded gentle man in the way of Mary. As you enter our unique bush setting, there is a pervasive sense of calm which flows through into the corridors and classrooms. At Whitefriars, we make time for contemplation. We reflect together, pray together and listen to each other.

Whitefriars values excellence and each student is encouraged and challenged to achieve his best in all aspects of College life. There is also a time for action, for serving our community, for learning, for discovering new interests and opening doors to new ways of thinking, collaborating and acting, which will prepare our young men for the world beyond school. Students are engaged and enjoy learning as they discover new activities and pursuits whilst making friendships that will last a lifetime. Whitefriars is an accredited member of the Council of International Schools, a global organisation which challenges schools, through a rigorous review and evaluation process, to deliver an international standard of education. At Whitefriars, we understand that we have a responsibility to promote inclusion and respect throughout the world. As global citizens we are culturally aware, respect the traditions of others and value social justice, diversity and the environment.

BUILDING RESILIENCE

Whitefriars College acknowledges the right of every student to an education that is directed to the development of the whole person. We value wellbeing for learning and the holistic education of our boys. Teaching wellbeing fosters the academic, social, emotional and spiritual growth of our students and prepares them for life beyond the College. Our weekly Wellbeing Program provides a range of experiences and exposure to a range of issues that focus on building positive relationships with self and others, and empowering young men to be resilient, confident and live with integrity.

Our partnership with The Resilience Project delivers a pro-active approach to wellbeing based on four key principals – Gratitude, Empathy, Mindfulness and Emotional Literacy. We also run other programs which have a positive impact on the resilience of our young men. Our Outdoor Learning Program at Year 8 and 9 is designed to take students out of their comfort zone and away from the creature comforts of home. Students develop teamwork, leadership and the capacity to adapt to, and thrive in, an outdoor environment. Our ACC Sports Development Program, with its experienced and expert coaches, challenges our boys to do their best in a team environment and learn how to respond to adversity and work towards a common goal in a highly competitive environment.



Building Resilience Using Technology – Channelling our students’ newly developed digital communication skills

By Lindsey Davis,
Integrate AV

Technology use in the classroom had been rapidly increasing well before the COVID-19 global pandemic. Schools were adopting interactive flat panels and portable devices, such as tablets or laptops, in a variety of ways and encouraging their use at home for homework and digital organisation, such as emails, calendars or digital learning management systems.



After two years of relying on technology use at home from a vast range of devices, all needing to be used independently by our youngest students through to our final year secondary and Higher Education students, it is safe to say we have built levels of resilience in using technology we never needed before.

Students, families and teachers became experts in basic troubleshooting of their internet connections, device operation and software use, out of sheer necessity.

"Miss, I can't find the email."

"Check your junk folder or recently deleted folder."

"Found it!"

"Mum, the internet's not working."

"Have you checked the Ethernet cable is properly plugged into the wall and the laptop?"

"Oh yeh!" [click] "It works now!"

"Dad, Zoom's not opening."

"Have you clicked on the little pop up blocked icon?"

"It's ok, it's good now."

And so on.

This resilience and determination to continue with quality teaching and learning regardless should not only be celebrated, but maintained in the classroom and at home, wherever possible. These digital communication skills are what teachers are hoping to achieve with their students through cross curricular capabilities and learning outcomes in key subject areas.

As a High School Technology and Mathematics teacher with four years in the Education and Corporate Technology Industry, I deeply value digital

communication skills. My team needed to deliver the highest quality online professional development to our teachers and schools, and my students needed to learn digital communication, organisation and independent learning skills. The levels of capability my students achieved during their lockdown home learning periods was incredible and I aim to nurture those skills and value them in my classroom teaching as much as possible.

As a Training and Professional Development Specialist with Integrate AV, I work with a fabulous team of technology integration specialists, whose knowledge and skill sets support schools and teachers, in addition to corporate and government organisations, with a range of technology solutions and support services to meet their individual needs.

To support building and maintaining student and teacher levels of resilience, we need to keep channelling their digital communication skills. Here are some suggestions to do exactly that:

- Provide students work via email or your learning management system, which they have to access on a digital device themselves, so they maintain the ability to locate files in a digital space independently.
- Encourage students to take photographs of work using portable devices and upload those photos to your school's LMS or cloud storage so they can access them from home or at school on another device. This is excellent practice for creating digital portfolios of the work they are proud of.
- Create calendar invites and attach classwork to the invite. Encourage students to respond to the calendar invite and download the attachment to access their work.
- Enlist some students as "Tech Support" each lesson or day. These students can support other students in accessing lesson content, connecting to devices and managing the interactive whiteboard content delivery.

- Many organisations developed virtual excursion programs during lockdown, most of which are still available. Book a live virtual excursion through DART Connections <https://dartlearning.org.au/> or liaise directly with organisations and allow students to manage the video conference connection and etiquette during the session.
- Have a day or lesson without any current technology. If your school still has any overhead projectors, see if you can borrow one and teach the way classes were taught 20 years ago. Discuss the skill differences required in using technology in the classroom today and how beneficial it might be for modern living, study and employment.

These are just a few suggestions of ways to continue to develop students' resilience using technology in the classroom and building on their developed skills from their time during home learning.

For more support and guidance on classroom or school technologies or integrated solutions in general, contact the team at Integrate AV on 1800 742 748 and they can provide you with tailored solutions for your needs and to meet your budget.

Lindsey Davis is a Technology Integration Specialist and Technology Teacher at a Sydney High School. She has been in the Education industry for 20 years, including working in the education technology industry delivering and managing teacher professional development. She began her teaching career with Teach First in the UK and moved to Australia 6 years ago. Working with Integrate AV as a Training and Professional Development Specialist, she is keen to support her fellow teachers with their use of technology in the classroom for developing a wide range of skills in our students of all ages.

BenQ

INTERACTIVE PANELS

65"

75"

86"

4K
ULTRA HD



LEARNING SPACES
TRAINING ROOMS
CLASSROOMS
HUDDLE SPACES
MEETING ROOMS
BOARD ROOMS

SLEEK DESIGN . COLLABORATIVE WHITEBOARDING
EZWRITE SOFTWARE . DEVICE COMPATIBILITY
MULTI-USER COLLABORATION . WIFI CAPABILITY



Wireless
presentation



Screen
sharing



Airplay,
Google Cast,
MirrorOp



4-way
split screen



Wireless
Touchback
(Windows only)



Easy
upgrade

INTEGRATE AV

Unified Communications & Collaboration Technologies



1800 742 748

info@integrateav.com.au

235+
Primary and Secondary schools
are now using Enquiry Tracker

A game changer for schools

Enquiry to Enrolment... solved.



The adventure begins



EnquiryTracker®
enquirytracker.net