

CATHOLIC SCHOOLS GUIDE 2022

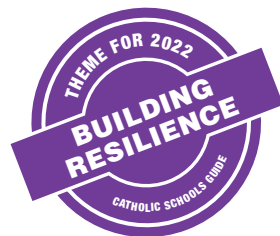
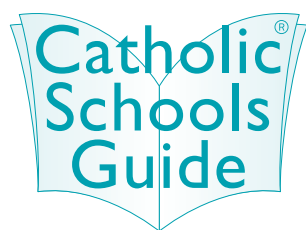


BUILDING RESILIENCE

BRISBANE
SECONDARY
SCHOOLS
EDITION

Contents

Feature Editorials	Index	Locations
9	12	13
College Presentations	Integrate AV Competition	College Presentations
14	20	22



Catholic Schools Guide is an independent publication published by Catholic Schools Guide Pty Ltd. The contents of Catholic Schools Guide are copyright and may not be reproduced in any form, either whole or in part, without written permission from the publisher. The content of this publication should be used as a guide; further enquiries or questions regarding school information must be taken up with the relevant Colleges.

While every effort has been made to ensure that the information provided in this publication is accurate, the publisher of this Guide is not responsible and will not be held liable for any errors or omissions. The publisher accepts no responsibility for the information supplied or changes subsequent to the date of publication. Further, the publisher will not be held liable for the misuse of any information gained from this Guide.

This document has been produced to international environmental management standard ISO14001. Designed and Printed by Ellikon Fine Printers, Melbourne www.ellikon.com.au.

Catholic Schools Guide is distributed by CouriersPlease, a leading courier and freight service that delivers tens of millions of parcels each year.



Catholic Schools Guide

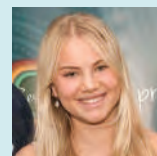
Greg Campitelli
Publishing Editor

Welcome to Catholic Schools Guide, 2022 edition. Each year, our Guide carries a different theme and this year it is '**Building Resilience**'.

In Australia, there is no greater group that has shown resilience over a longer time than Australia's First People.

The core value of our Guide rests in the continuous quest for change to search for greater equality and celebration of Australia's First People. Our design team has now permanently incorporated motifs that pay homage to our extraordinary beautiful Indigenous cultural art. This is thanks to the work of a young Wiradjuri Woman, Lua Pellegrini, who works closely with Koji, our production designer at Ellikon, to produce the stunning work you see.

Artist in Residence – Introducing Lua Pellegrini



"I am a young Wiradjuri Woman who grew up on Darug Country in Western Sydney. I am currently studying at the University of NSW completing a Bachelor of Fine Arts/ Arts Majoring in Indigenous Studies. For most of my life I have had a love for visual arts, however, my passion for Aboriginal Art only began after spending time with my local community elders Uncle Greg Simms and Uncle Wes Marne during high school.

In 2019, I graduated from Loreto Normanhurst with my HSC major work, 'Our Past, Her Future', being featured on the cover of the 2020 Catholic Schools Guide and later showcased at the Grace Cossington Smith Gallery. That same year, I was humbled to be asked to exhibit my work on the Reconciliation Wall at NSW Parliament House beginning my exhibition Our Past, Our Future in NAIDOC Week 2020 and continuing to have it exhibited till March of 2021.

I am extremely passionate about Indigenous education and have been a student volunteer at Redfern Jarjum College since 2016. I was also honoured to receive the NESA Chairperson Award for the Highest performing Aboriginal Student in HSC Aboriginal Studies for 2019. Since then, I have continued to aim to have a positive impact on the lives of other Indigenous youth through my work as a member of the NSW Health Literacy Advisory Council and as the Chairperson of the NSW Youth Advisory Council and am excited to continue my passion for Indigenous art and education through my new role as the Catholic Schools Guide Artist in Residence."

WIN an AMAZING PRIZE worth over \$9500! – The Great Lego Tower

IntegrateAV is proud to be our major sponsor of this year's competition with an incredible prize on offer. Every Catholic school in Australia is invited to enter this competition to win an All New CommBox Classic Interactive Touch Screen.

It's easy. We all love LEGO – so, build the tallest tower you can make using one single brick on top of the other. Then, register your school via the Catholic Schools Guide website.

Feature Writers

If there is one true learning the global pandemic has taught us is about the importance of being resilient. Huge thanks to our feature writers Ashley de Silva, CEO of mental health service ReachOut; Alisha Min at The Resilience Project; the team at Be You; experienced classroom teacher Donna Smith; and Integrate AV's Lindsey Davis: their features are thought-provoking reading.

Online Platforms

Need more information? Check out our brand new website at catholicschoolsguide.com.au where you will find videos posted from each school, Open Day listings, great articles on education and much more. Please join our growing community at facebook.com/CatholicSchoolGuide where you will find terrific tips and news feeds.

Facts About the Guide

The Colleges choose to advertise in the Guide, but of course there is no compulsion to do so. Importantly, the Guide is distributed free to families via the Primary School network. It is also available at most parishes and many childcare centres. The Guide is put together by a dedicated team. I am especially grateful to our sub-editor, Master of Applied Linguistics, Stephen Campitelli; senior production manager, Kristy Nimmo; and the design team at Ellikon – Phil and Koji – we simply could not put this magazine to press without their professionalism.

University Destination Data

On each school's page you will find 'Uni Offers' this refers to the % of Year 12 first round university offers for the Class of 2020.

Caritas Australia

Catholic Schools Guide is proud to be supporting the work of Caritas Australia. All support is provided pro bono and our Guide encourages all readers to get their school involved in supporting the extraordinary work of this agency.

Dedication

This edition is dedicated to us – the survivors of the pandemic.

SchoolHouse Australia
is an education recruitment and consulting
company providing services to assist schools
throughout Australia

- **CONTRACT AND PERMANENT**
RECRUITMENT CONSULTING SERVICES

- **INNOVATIVE TOOLS**
FOR SELF-MANAGED RECRUITMENT

School House



WE **VALUE** SCHOOL RELATIONSHIPS

Our staff bring over **50 years of collective experience**
recruiting for Australian Catholic schools.

Trusting relationships have taught us to ensure all
our services attract and select quality teachers
who fit a school's ethos and culture.



WE **KNOW** TEACHERS

We also understand that **flexible, cost effective services** are
what schools require. You can choose to enlist our recruiters
to provide support and/or embed our digital tools into
your self-managed recruitment.

Benefit from **SchoolHouse's** ongoing national and international
SchoolHouse marketing, and ensure your recruitment campaigns
reach the widest audience of suitable teachers



visit www.the-schoolhouse.com.au

commBOX CLASSIC INTERACTIVE PANEL

DURABLE AND COMMERCIAL-GRADE



DIGITAL WHITEBOARD . WEB BROWSER . CLICKVIEW
COMMBOX APP STORE . COMMBOX WIFI CONNECT
VIVI BUILT-IN (SUBSCRIPTION FEES APPLY)
SMART SWITCHING FOR GUEST CONNECTIVITY
DIGITAL SIGNAGE . COMMBOX EDUCATION APPS

Google

Microsoft

canvas

Blackboard

USE TEACHING APPLICATIONS YOU ALREADY KNOW AND LOVE

Make teaching easy by allowing teacher and schools to teach with the applications they already know and love. Schools and teachers are already investing heavily into the best of breed software offered by Google Education and Microsoft Education. CommBox even integrates with Microsoft Ink, saving teachers time when using apps such as OneNote, Word etc.

commBOX
CLASSIC INTERACTIVE PANEL





POWERFUL, EASY-TO-USE TOOLS FOR TEACHERS



TWO WAY MIRRORING AND TOUCHBACK WITH AIRSERVER

Teach or present from anywhere in the room. Share content and provide instant feedback from laptops, smartphones and tablets without the need for apps or software.

 **AirServer**

4K
ULTRA HD

55" 65" 75" 86" 98"

1800 742 748 info@integrateav.com.au

Tackling cyber education differently

Get on board with Australia's favourite cyber education solution for your upper primary children!

DiGii
SOCIAL

What is DiGii Social?

A content-rich, AI powered platform that provides children with live feedback and educates on every keystroke.



For teachers it couldn't be simpler. Students play and interact on their secure platform, teachers have full visibility of all interactions on the educator platform, and artificial intelligence steps in whenever necessary to guide children towards making better and safer choices online. Not only do we educate children, but we also educate parents with their own library of learning.

- ✓ Curriculum and protective behaviours aligned
- ✓ Evidence-based
- ✓ Easily implemented
- ✓ Creates positive behaviour change

"DiGii Social provides an authentic and meaningful experience for our Years 5 and 6 students to learn the skills of digital citizenship in a safe and supported manner"

Katie, Head of Junior School, Perth College



Contact us today to organise an obligation-free demonstration:

✉ hello@digiionline.com

🌐 visit digiisocial.com

**14 Day
FREE
TRIAL**



A game changer for schools

Enquiry to Enrolment... solved.



The adventure begins

ET EnquiryTracker®
enquirytracker.net

Creating spaces for
children to play,
learn and grow.



DESIGN | PLAYSCAPES | SURFACING | SYNTHETIC GRASS

Delivering award-winning playscapes and outdoor learning spaces to the education sector for over 10 years, Ausplay Playscapes is committed to creating long-lasting, outdoor spaces for children to play, learn and grow.

Australian Made

With in-house fabrication and a full design and construct service, we collaborate with clients to create one-of-a-kind, iconic playscapes and structures.

Site Specific Design

Each project is tailored to work sensitively with the existing environment.

Full service

From initial design through to installation, surfacing and shade, our highly qualified and experienced team of designers, fabricators and installers ensure that every project is compliant with Australian Standards and delivered to an outstanding quality.

We cannot wait to work with you on your next project.
Get in touch and let us bring your ideas to life!



Australian CATHOLICS

Bring faith to life in your school community



Discover what an AC+ subscription can offer your school



- Education Hub access for staff, students and parents
- Archive of 1000+ articles searchable by curriculum topic, age group, common theme and resource type. Classroom activities, prayers and liturgy ideas.
- Quarterly magazine to give to parents and staff
- License to use content and resources in RE and faith formation
- Teacher's Forum – share resources, ideas and experiences
- Access to exclusive webinars
- Faith-focused articles for your school newsletter
- AC+ subscriber e-newsletter
- Inclusion in the School Open Day Calendar
- Opportunities for your students to have a voice

More than
1 in 3
Catholic
schools has a
subscription

TO SUBSCRIBE

(and for schools to see the special bulk rates) GO TO:

www.australiancatholics.com.au

Connect with us @AUSCATHS

Danihers
facility
management



OUTSOURCING YOUR FACILITY MANAGEMENT WILL OFFER YOU GREATER FLEXIBILITY, ACCESS TO BEST PRACTICES, IMPROVED QUALITY AND IT WILL ALSO REDUCE YOUR COSTS

Facility Management specialist in:

- Grounds & Sporting Oval Management
- Garden Design & Daily Maintenance
- Property Maintenance
- Cleaning Services
- Security Services
- Sustainability Management
- HR & Transitional Management
- Essential Services Management
- Auditing, Property Compliance & Risk Management
- Project Management

"Communication is a key to a successful professional relationship and this is evident between our College and the staff of Danihers. Of course we demand high cleaning standards in such a large, diverse and complex site and Danihers have never let us down in this important and fundamental regard"

Brian Hanley
Principal, St Monica's College, Epping

"We approached Danihers because the complexity of managing and supporting cleaning staff who were so frequently working outside of school hours was becoming exceedingly challenging and time-consuming. From the initial conversations through to our current arrangements, the team at Danihers have been professional and most importantly, they were quick to align with our College's values and priorities. Their proactive care for our learning spaces, staff areas and boarding community has been greatly appreciated, and their efforts to ensure that our existing staff were grandfathered into the new arrangement gave us great peace of mind. The staff who now work on our site feel like part of our community. We have great lines of communication, and they participate in the daily life of the school as if we are all one organisation"

Kate Fogarty
Principal, Assumption College

1300 559 409 www.daniers.com.au



Three flexible, cost-effective keying solutions

Changing organisational structures, the increased use of contractors, temporary and mobile workers are putting enormous pressure on those responsible for the security in a building or on a site. Designed with this in mind, ASSA ABLOY Opening Solutions offers three keying platforms based on your business needs; a mechanical, an electromechanical and a purely electronic.

Please contact ASSA ABLOY Opening Solutions to find out more about **PROTEC²**, **PROTEC² CLIQ** and **eCLIQ** via the QR code below.



SCAN HERE to register your interest
or for more information visit:

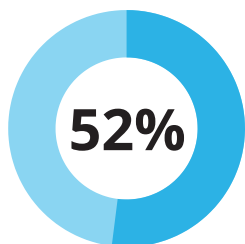
assaabloyopeningsolutions.com.au



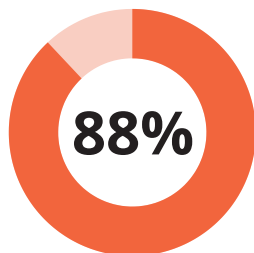
Experience a safer
and more open world

ASSA ABLOY
Opening Solutions

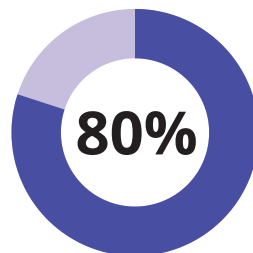
IS YOUR SCHOOL TAKING RISKS WITH EXCURSION RISK?



of schools rate their excursion risk assessments as **fair, poor or very poor**.



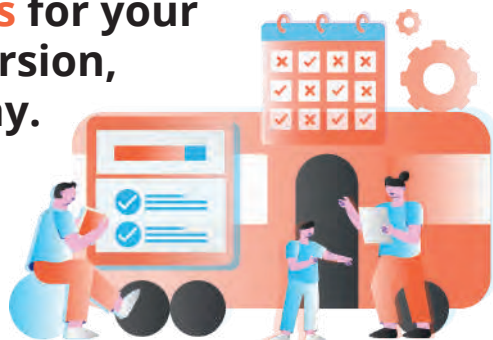
of schools **do not train their teachers** on excursion risk management.



of excursions **require multiple amendments** to risk assessments prior to approval.

WITH SAFEEXCURSIONS, OVER **70% OF EXCURSION RISK ASSESSMENTS ARE COMPLETED WITHIN A DAY.**

To learn more about **Better Risk Assessments** for your next school excursion, get in touch today.



www.complispace.com.au/safe-excursions



PRINTED SCHOOL MARQUEES AND FLAGS FOR ALL HOUSES AND SPORTS

At Mountain Shade we pride ourselves on quality.

We believe everyone should have the ability to protect themselves from the elements and show off while doing so. Our Marquees come in an array of sizes to meet your needs. Mountain Shade products are Australian Standard Approved, meeting your Duty of Care and putting your mind at ease.

We deliver nation wide, so call us to enquire!

sales@mountainshade.com.au | 88 Latitude Blvd, Thomastown, VIC 3074



Building Resilience

By Ashley de Silva,
CEO of ReachOut

Setbacks, problems and failures are an inevitable part of life. Since 2020, COVID-19 has had a huge impact on the lives of students, parents and teachers across Australia. We have had to adapt to all the changes to our normal routines and activities and learn to cope with things like online learning, study stress and uncertainty about the future.



ReachOut is a mental health service that's been providing support for young people, their parents and schools for more than 20 years. During this time we've heard from countless young people, parents, teachers, school staff and mental health professionals about what helps them to stay happy and well. A key theme we've heard again and again is the importance of *resilience* – a theme that's backed up by science.

The term 'resilience' actually comes from materials in science and engineering. It relates to how much pressure and stress different materials can withstand before being compromised in some way. When we use the term 'resilience' at ReachOut, we're talking about the ability of people and communities to adapt and keep going when faced with adversity. Resilience helps us not only to recover from stress, but to excel in life – be that in the classroom, in the staff room or at home.

An example that's commonly used to illustrate resilience is a rubber band, which can be put under stress by being stretched and pulled in all directions, without breaking, then reverts to its original shape as soon as the pressure or stress is removed.

Individuals who are resilient share certain traits. These include emotional awareness, the ability to regulate their emotions, to maintain an optimistic outlook, to be flexible in their thinking and to display empathy towards others. They also believe that they can achieve things and are willing to seek help when needed.

Significantly, all of these traits can be learnt not just by students, but also by teachers, parents and others in the school community. Resilience is something we can *all* continue to build and cultivate throughout our lives.

Having a resilient school community helps reduce the impact that negative situations can have on individuals and those around them. We know this may feel like a challenging goal, though, and it's not always clear how we can achieve it in practice.

Two practical approaches that teachers, parents and young people can use to develop resilience are *encouraging help seeking and sharing stories*.

A vital part of building resilience is learning to recognise when we need additional support and then seeking help. We all need help at times. Resilient people know when to ask for help and will reach out to others when they're going through a tough time.

Making sure that school staff, parents, teachers and young people know where to seek help when it comes to their mental health is key. This could be having posters up at school about mental health support services, providing information about mental health support in school newsletters or having regular conversations about support services.

Critically, there is no one-size-fits-all solution when it comes to mental health support. It's helpful to offer different options, including connecting with a professional in person, calling a helpline, talking to someone you trust, or engaging with an online service such as ReachOut.

Another effective way to build resilience across the school community is to find ways, both formally and informally, to share people's stories of experiencing and overcoming knockbacks and failures. This can include giving students a platform to share their stories with each other, but also encouraging them to hear their parents' and teachers' stories, too.

These practical examples are thought starters for ways in which your school community can encourage and promote resilience to ensure that everyone can benefit from this vital mental health tool.

For more information and support, visit: [ReachOut.com \(youth\)](https://reachout.com.au/youth), [ReachOut.com/Parents](https://reachout.com.au/parents) and [ReachOut.com/Schools](https://reachout.com.au/schools).

If you need further support when it comes to your mental health, you can call LifeLine on 13 11 14 or Kids Helpline on 1800 55 1800, contact your GP, or call 000 in an emergency. At [ReachOut.com](https://reachout.com.au) you can find articles, tips, online communities and pathways to further support.

The key protective factor against stress: Four Fundamental Pillars of Resilience

By Donna Smith

Teacher attrition has long been a major concern not only for Australia but also other economically developed countries. In fact, in Australia, almost half of the beginning teachers employed resign after just five years of practice (Hong, 2012). This is problematic as it has compounding effects. Firstly, the psychological pain and suffering endured by the individual teacher (Dorman, 2013) can compromise their mental health; secondly, there is a negative impact on student learning outcomes (Arnup & Bowles, 2016); and lastly, the loss of highly trained professionals creates significant challenges in recruitment and replacement (Howard & Johnson, 2004).



In Australia, there are almost 270,000 teachers and 4 million students in 9,500 schools (ABS, 2021). This is almost 1 in 6 people with a direct interest in Australian school life. Education is everybody's business and is too large to be ignored or not considered. It is, therefore, vital we preserve and get better at retaining teachers as they have a far-reaching influence on shaping our nation (Heffernan, 2019) and are drivers for student success (Hattie, 2009).

The high attrition rate among beginning teachers is not only important in terms of addressing a shortage of teachers (Kim, 2019), there is a real drive to create more sustainable practices so teachers can operate from a positive mindset. Mental wellbeing of teachers is at the forefront of teacher attrition with research making it apparent that teacher resilience and burnout contribute to teachers leaving the profession.

Because burnout is caused by prolonged periods of stress it is then only natural that steps are taken in managing stress to keep it at a sustainable level. Susan Bruce, associate professor at Northeast Ohio Medical University, says that it is better and easier to prevent burnout than to cure or resolve it. A key to this lies in resilience building. According to Susan Beltman, Associate Professor for the School of Education at Curtin University, resilience defines an individual's capacity to continue, adapt and thrive despite experiencing adversities, such as unexpected changes, critical life events and job stress. Importantly, rigorous evidence-based research (Hong, 2012; Beltman et al., 2011; Arnup & Bowles, 2016; Howard & Johnson, 2012) has outlined four elements underpinning resilience known as the 'four fundamental pillars': Confidence, de-personalisation from unpleasant events, pride and ownership over accomplishment, and strong connections with others.

Confidence: Belief in one's abilities is the cornerstone of resilience. Research demonstrates that confident educators are less likely to manifest burnout curbing their intention to leave the classroom (Hong, 2012; Howard & Johnson, 2012). Furthermore, being confident and having a strong self-belief in one's abilities not only builds resilience it generates fulfilment, motivation and a sense of joy.

De-personalisation: At times, teachers may feel responsible for events that are out of their control. Resilient individuals understand the importance of creating strong and healthy personal and professional boundaries enabling them to de-personalise from adversity and unpleasant events and this most certainly enhances teacher resilience (Howard & Johnson, 2012).

Pride and ownership: We need to celebrate our wins. It is easy to fall into the trap of playing off small accomplishments and not recognising the efforts put forth in achieving such wins. Resilient people are proud, celebrate their accomplishments and take ownership of all goals achieved, no matter how trivial, which fosters high resilience.

Strong connections: Resilience thrives on healthy and strong networks. These networks need to be fostered in professional and personal life. Healthy relationships with family and friends can influence an individual's professional career. Therefore, a 360-degree approach to healthy relationships is paramount to building and maintaining resilience (Bruce, 2009).

It's important to know that resilience is not static, it can wax and wane depending on the circumstances. To build and maintain resilience through adverse times individuals need to be kind to themselves, practice, and persevere. Resilience can grow over time and it is now,

especially during these uncertain times, we need to strengthen our resilience more than ever. The four fundamental pillars offer a great starting point to build resilience not only to survive through adversity but to thrive.

References

- Australian Bureau of Statistics [ABS]. (2021). *Schools Australia*. <https://www.abs.gov.au>
- Beltman, S., Mansfield, C., & Price, A. (2011). Thriving not just surviving: A review of research on teacher resilience. *Educational research review*, 6(3), 185-207.
- Bruce, S. (2009). Recognizing stress and avoiding burnout. *Science direct*, 1(1), 57-64.
- Hattie, J. (2009). *Visible learning: A synthesis of 800+ meta-analyses on achievement*. Routledge.
- Heffernan, A., Longmuir, F., Bright, D., & Kim, M. (2019). *Perceptions of teachers and teaching in Australia*. Monash University.
- Hong, J. (2012). Why do some beginning teachers leave the school, and others stay? Understanding teacher resilience through psychological lenses. *Teachers and teaching*, 18(4), 417-440.
- Howard, S., & Johnson, B. (2004). Resilient teachers: resisting stress and burnout. *Social Psychology of education*, 7, 399-420.
- Kim, L. E., Jörg, V., & Klassen, R. M. (2019). A meta-analysis of the effects of teacher personality on teacher effectiveness and burnout. *Education psychology Review*, 31, 163-195.
- Mansfield, C., Beltman, S., Price, A., & McConney, A. (2012). "Don't sweat the small stuff." Understanding teacher resilience at the chalkface. *Teaching and Teacher Education*, 28(3), 357-367.

Resilience: A whole-of-school tonic for tough times

By Alisha Min,
The Resilience Project

In today's times of constant change and uncertainty, school communities have been hard hit. Schools have been forced to quickly pivot with loungerooms replacing classrooms and staffrooms, and parents juggling working from home while helping children adjust to virtual lessons.



Children of all ages have had face-to-face connections replaced with screen time. They're missing the social and emotional development which comes from connecting with their peers through school excursions, sports, arts and cultural activities, plus celebrating graduation and birthday milestones with their peers.

Building resilience in students, teachers and families has never been more vital.

At The Resilience Project, we see resilience as the ability to better bounce back from challenging or stressful times. To help people build resilience, we deliver emotionally engaging programs which step-through a range of evidence-based, practical wellbeing strategies. When practised, the research tells us these strategies elicit positive emotions, and this in turn leads us to happier and more resilient lives.

The statistics around mental health in Australia, particularly surrounding our children, are startling. They tell us that one in four adolescents will experience mental health problems this year, and of these children, nearly two thirds of them will not seek help. Additionally, recent surveys conducted by youth mental health foundation, Headspace, revealed 75% of young people said their mental health has deteriorated due to Covid-19 upheavals, with incidences of self-harm and anorexia particularly rising.

With these confronting figures in mind, it is clear that primary and secondary schools play an integral role in improving the mental health of our country's youth. The Royal Commission into Victoria's Mental Health System in 2021 revealed that primary and secondary schools are settings with the highest unmet need of mental health support.

Programs in schools with a focus on developing positive emotions are a crucial step in the right direction.

Delivering positive strategies in schools is at the heart of what we do at The Resilience Project, and so far, we have delivered wellbeing programs to over 1,500 schools and early learning centres.

Our Education Programs support mental health in the classroom, staffroom and family home through presentations, student curriculum, teacher and parent resources and digital content. Research shows that the more positive emotion you experience, the more resilient you will be. For that reason, our Education Programs focus on key pillars that have been proven to cultivate positive emotion as building blocks to resilience:

- **Gratitude:** Paying attention to the things we have right now, and not worrying about what we don't have. We practise gratitude by focusing on the positives.
- **Empathy:** Putting ourselves in the shoes of others so we feel what they feel. We practise empathy by being kind and compassionate to other people.
- **Mindfulness:** Our ability to be calm and present in the moment. We practise mindfulness by slowing down and concentrating on one thing at a time.
- **Emotional Literacy:** Our ability to label our emotions, which helps us to soften negative emotions and find positive ones. We practise emotional literacy by labelling our emotions as we experience them.

As an organisation, we are driven by our desire to make a difference to young people's emotional wellbeing. Just like adults in workplaces, school curriculums and cultures have a big influence on young people

and their overall wellbeing. To make sure our programs are hitting the mark, we underwent an independent research evaluation with The University of Melbourne to measure the impact of our schools partnership program. Recent results show promising evidence of improvements in the participating students' self-esteem and confidence, their relationships at school and home, their ability to express emotions and use daily gratitude strategies, and the creation of supportive classroom environments.

Schools are also telling us that these programs are making a positive difference.

"As a small school, we are so very grateful to be able to participate in the Digital Program. Our students love everything about the program, and it has provided staff with a new language for supporting students and their families".

Liz Trewick, Principal, Our Lady of Sacred Heart. (Elmore, Victoria)

We are delighted that Catholic schools already make up over 20% of the 378 schools participating in our extensive Partnerships School across Australia.

The Resilience Project delivers emotionally engaging programs and provide evidence-based, practical wellbeing strategies to build resilience. For more information about The Resilience Project go to: theresilienceproject.com.au

Index

A list of Catholic Secondary Colleges featured in the 2022 Guide.



All Hallows' School
547 Ann Street, Brisbane QLD 4000



Lourdes Hill College
86 Hawthorne Road, Hawthorne QLD 4171



Padua College
80 Turner Road, Kedron Brisbane QLD 4031



St Joseph's Nudgee College
2199 Sandgate Road, Boondall QLD 4034



Ambrose Treacy College
Twigg Street, Indooroopilly QLD 4068



Marist College Ashgrove
142 Frasers Road, Ashgrove QLD 4060



San Sisto College
97 Mayfield Road, Carina QLD 4152



St Laurence's College
82 Stephens Road, South Brisbane QLD 4101



Clairvaux MacKillop College
Klumpp Road, Upper Mt Gravatt QLD 4122



Mary MacKillop College
60 Bage Street, Nundah QLD 4012



Southern Cross Catholic College
307 Scarborough Road, Scarborough QLD 4020



St Mary's College
11 Mary Street, Woodend QLD 4305



Emmaus College
48 East Street, Jimboomba QLD 4280



Mount Alvernia College
82 Cremorne Road, Kedron QLD 4031



St Benedict's College
21 St Benedict's Close, Mango Hill QLD 4509



St Patrick's College
60 Park Parade, Shorncliffe, QLD 4017



Iona College
85 North Road, Lindum QLD 4178



Mt Maria College Petrie
Armstrong Street, Petrie QLD 4502



St John Fisher College
John Fisher Drive, Bracken Ridge QLD 4017



St Peter Claver College
10 Old Ipswich Road, Riverview QLD 4303



Loreto College
415 Cavendish Road, Coorparoo QLD 4151



Our Lady's College
15 Chester Road, Annerley QLD 4103



St Joseph's College Gregory Terrace
285 Gregory Terrace, Spring Hill, QLD 4000



Stuartholme School
365 Birdwood Terrace, Toowong QLD 4066

Locations

Locations of Catholic Secondary Colleges featured in the 2022 Guide. Multiple crests represent multiple College campuses.



© Brisway Publishing.
Reproduced from Brisway
with permission.

To Jimboomba



All Hallows' School

Est. 1861

*'Dieu et Devoir
God and Duty'*

KEY INFORMATION

Address 547 Ann St, Brisbane QLD 4000
Telephone 07 3831 3100
Website ahs.qld.edu.au
Principal Mrs Catherine O'Kane
Enquiries The Enrolments Registrar
Email Enrolments@ahs.qld.edu.au

WHAT MAKES US SPECIAL

All Hallows' School is a community alive with the charism of Catherine McAuley and the traditions and culture of our 160-year history.

Established in 1861, All Hallows' is grounded in the Catholic traditions and values of the Sisters of Mercy, with Catherine McAuley as their founder.

Catherine's vision lives on today in the first girls' school in Queensland and the oldest secondary school in the state.

From a multi-skilled and multi-disciplinary base, we foster the growth of highly developed thinking, emotional resilience and the gift of personal reflection, enabling an All Hallows' student to become a skilled communicator in a global context.

As visionary leaders in the education of girls in Years 5 to 12, we journey into the third decade of the 21st century developing young women who are future-ready.

Our House-based pastoral care system ensures that every girl is personally known, supported and nurtured, and our vibrant community provides many opportunities for family engagement.

During your daughter's time at All Hallows' School, she will experience and respond to an academically rigorous and intellectually challenging curriculum.

She will have vast extra-curricular opportunities. She will be called to be the best she can be.

BUILDING RESILIENCE

All Hallows' School is not just a place where students acquire academic skills; it is a place where students can build their capacity to cope with life's challenges, connect with people and strive for a higher sense of purpose.

Our Wellbeing Framework, AHSfitforlife, is an investment in the wellbeing of our students which can practically help them to achieve their personal goals, enjoy success as a learner, develop strong and sustainable relationships and have the emotional resilience that life demands.

The All Hallows' model is based on the science of wellbeing and encompasses seven identified 'ways to wellbeing'.

These are: Spirit of Mercy, Positivity, Relationships, Mindfulness, Mindset, Fitness and Wellness and Strengths.



OUR FIRST PEOPLES

We acknowledge the Traditional Custodians of the Land on which we stand, the Turrbal and Jagera people.

We pay our respects to them, and for the love they gave and received from the Land. May we walk gently and respectfully upon this Land. May we always recognise that we walk in love with our Aboriginal and Torres Strait Islander sisters and brothers in creating a more just Australian society.

VISIT US IN 2022

Please visit the All Hallows' School website for information about open days and tours.

QUICK FACTS

- Debating Teams
- Instrumental and Vocal program
- Instrumental Music Ensembles
- Religious Education
- Student immersion experiences
- Speech and Drama Program
- Sport co-curricular activities
- Mercy Action Programs
- 99% of QTAC applicants receive a tertiary offer
- Whole-School Wellbeing Framework

GENDER

Girls

YEAR RANGE

Yr 5 - 12

ENROLMENT

1,622 students

YEAR 7

240 students
8 classes

LANGUAGES

French, Italian & Japanese

FEES 2022

Refer to school website

QCE SUBJECTS

33

VET

Yes

UNI OFFERS

99.6%

CONNECT VIA





Ambrose Treacy College

Est. 2015

*'Learning today
Leading tomorrow'*

KEY INFORMATION

Address Twigg St, Indooroopilly QLD 4068
Telephone 07 3878 0500
Website atc.qld.edu.au
Principal Chris Ryan
Enquiries Enrolments Officer
Email enrolments@atc.qld.edu.au

WHAT MAKES US SPECIAL

At Ambrose Treacy College we believe every boy can achieve personal excellence and be a leader in the community. The College was founded on the three pillars of Learning, Leadership and Service, and these pillars provide opportunities for our staff, students and parents to live and grow as a 'Signum Fidei' (Sign of Faith) for each other and for our world.

We promote a culture of high expectation which is evidence informed and improvement seeking, and our quality teaching and learning experiences aim for each student to be hope filled and achieve their personal best. Pathways to suit each boy's talents and interests, plus targeted classes and Enrichment programs support boys in reaching their goals.

ATC is an inclusive community that is accepting and welcoming, fostering right relationships and our students are agents of change who are committed to justice and peace for all, as they walk in solidarity with those who are marginalised. Every student is required to partake in service hours. Last year, over 23,000 hours were recorded by students working in the community and giving back to others less fortunate. Students have opportunities to link with and be aware of people from many backgrounds, and thus forging connections and building awareness.

Leadership programs across the College promote opportunities in and out of the classroom – Men of Courage, High Performance Habits, Clubs and Activities, Extensive Co-curricular - for every boy to experience and develop leadership skills so they can be men of courage. We look forward to answering your questions at one of our morning or afternoon College Tours in 2022. Register now via our website.

BUILDING RESILIENCE

Ambrose Treacy College has a multidimensional whole school strategic approach to building student resilience. We provide a safe and supportive learning environment, promote positive teacher student and peer relationships, provide support for those with additional needs and involve students and families in decision making. Ambrose Treacy College builds a sense of student connectedness and belonging through our Pastoral Care System, Service Program and Co-Curricular Programs that have a demonstrated capacity to improve academic and wellbeing outcomes. We provide quality evidence-based social and emotional skills programs through our Formation Curriculum, Retreat Program and Men of Courage Framework that explicitly teach a range of resilience skills, including self-awareness, self-management, social awareness, social management, emotional literacy, digital literacy, stress management, peer support, and critical and creative problem solving. Finally, at Ambrose Treacy College we are committed to building partnerships with parents and carers in support of their son's capacity to be resilient. We provide a range of services, resources and parent nights that aim to support families navigate through issues such as popular culture, friendships, gaming, sleep, diet, body image, social media, digital reputation, anxiety, depression, cyber safety, drugs, alcohol, mental health and wellbeing.



OUR FIRST PEOPLES

Ambrose Treacy College proudly recognises the traditional ownership and cultural heritage of the local custodians, the Turrabul and Jaggera peoples.

We acknowledge our Aboriginal brothers and sisters who have walked and cared for these lands and waters for thousands of years. We recognise that these have always been places of teaching and learning.

VISIT US IN 2022

Join us for a morning or afternoon tour on various dates in 2022. Our first tour is Thursday 17 February at 9am.

Go to our website to register or view other dates.

QUICK FACTS

- Outstanding teaching staff
- State of the art riverside Campus
- Targeted Classes
- Pathways & VET
- Developing leaders of the future
- High Performance Habits
- Service Program for all year levels
- Dynamic Cultural Program
- Sport and Athletic Development
- Outstanding Choir, Band and Ensemble programs
- Fishing, Robotics, Surfing, Cooking, Mountain biking, Golf and many more clubs

GENDER

Boys

YEAR RANGE

Years 4 to 12

ENROLMENT

1,350 students

YEAR 7

203 students
8 classes

LANGUAGES

Japanese

FEES 2022

See our website

QCE SUBJECTS

27

VET

Yes

UNI OFFERS

Contact our Head of Pathways
learning@atc.qld.edu.au

CONNECT VIA





Clairvaux MacKillop College

Est. 1986

'Commitment Compassion Celebration'

KEY INFORMATION

Address	Klump Rd, Upper Mt Gravatt QLD 4122
Telephone	07 3347 9200
Website	cvxmck.edu.au
Principal	Mrs Christine Clarke
Enquiries	Enrolment Registrar
Email	enrolments@cvxmck.edu.au



OUR FIRST PEOPLES

We acknowledge the Aboriginal and Torres Strait Island People of this nation and recognise their continuing connection to land waters and culture.

Clairvaux MacKillop College is located on Country of the Turrbul Tribal Nation, traditional custodians of Kaggarr-Mabul - Mt Gravatt, Place of Echidna - the great mountain that looks over our community.

We acknowledge the Yuggerra Elders, past and present, as well as Yuggerra families.

VISIT US IN 2022

Please visit the College website for our tour dates.

QUICK FACTS

- Built on the charisms of Mary MacKillop and Edmund Rice
- After-School Homework Club
- Year 10 Student Mentor Program
- Dedicated Year 7 induction program
- Extensive Co-Curricular Program
- STEM Ambassador Program
- Action for Social Justice
- Vibrant vocal and Instrumental Program as well as individual music tuition
- Local, district, regional and national sporting pathways
- Swimming and running training clubs

GENDER

Co-educational

YEAR RANGE

Years 7 – 12

ENROLMENT

1,400 students

YEAR 7

250 students
10 classes

LANGUAGES

Japanese & Chinese

FEES 2022

Yr 7 \$5,935
Yr 12 \$6,290

QCE SUBJECTS

55

VET

Yes

UNI OFFERS

98%

CONNECT VIA



WHAT MAKES US SPECIAL

Clairvaux MacKillop College is a Catholic co-educational Christian inclusive learning community for students in years 7 to 12. The College draws on a proud tradition, built on the charisms of Saint Mary MacKillop and Blessed Edmund Rice.

Our curriculum is challenging, relevant and offers our students opportunities to pursue academic and vocational pathways.

Our curriculum is complemented and is imbued by the general capabilities suite of 21st century skills for learners. Embedded in our curriculum is our Ways and Means (WAM) program. This aims to strengthen students' development in study skills, time management, mental health, resilience and identity formation.

The College's pedagogy is guided by the Learning and Teaching Framework of Brisbane Catholic Education.

We educate all to live the gospel of Jesus Christ as successful, creative and confident, active and informed learners empowered to shape and enrich our world.

Our students' learnings are monitored through informed use of data. This assists our staff in creating a learning and teaching environment that will enable our students to become successful, creative and confident life-long learners.

BUILDING RESILIENCE

Clairvaux MacKillop College nurtures resilient students by preparing them to be hope-filled, confident and decisive leaders of the future who can overcome adversity and emerge stronger from life's challenges.

Students are educated to 'have a sense of self-worth, self-awareness and personal identity' that enables them to manage their 'emotional, mental, spiritual and physical wellbeing' with strength and determination. Clairvaux MacKillop College students:

- Participate in adventure-based learning programs
- Lead and mentor in multiple settings
- Practise compassion, forgiveness and restoration
- Learn to be emotionally intelligent
- Actively participate in a dedicated life skills program in all year levels that is age-appropriate, sequential, evidence-based and shaped from the Australian Curriculum
- Build high quality relationships with peers and adults
- Experience reflection and formation opportunities that nurture faith and spirituality.

All Clairvaux MacKillop College People are part of a pastoral house system guided by teachers, pastoral leaders, guidance counsellors and other support services. Our students learn the strategies needed to face life's challenges with hope and optimism.





Emmaus College

Est. 2002

'Where the focus is on learning'

KEY INFORMATION

Address 48 East St, Jimboomba QLD 4280
Telephone 07 5547 9990
Website emmausjimboomba.qld.edu.au
Principal Kevin Schwede
Enquiries Katie Simpson
Email psjimboomba@bne.catholic.edu.au

WHAT MAKES US SPECIAL

What are the three most important attributes of Emmaus College? Visionary, nurturing and engaging.

The school's Vision Statement, "Excellence in learning within a contemporary Christian community", helps create a strong ethic of care and respect, traits that are highly visible throughout the school. We have teachers who are thinking and looking forward, preparing children for a more flexible, globalised world. We aim to develop students who are thoughtful and optimistic, having confidence in who they are and where they would like to be in the future.

Another vital attribute of Emmaus is nurturing. With thoughtful guidance, students participate in pastoral care programs that teach the importance of reflection, mutual respect and self-discipline. Students know that they are cared for, and in turn, understand how to care for others.

Teachers place special emphasis on nurturing the social, emotional and spiritual aspects of development. The third attribute of Emmaus is engagement.

The professional partnership between teachers, families and students motivates learners to do the very best they can – both in their academic achievement and in their co-curricular activities.

BUILDING RESILIENCE

Emmaus College's purpose and mission flows from our Christian heritage and partnership between the Anglican, Uniting, Catholic and Lutheran churches. Our motto is "Walking With Christ" and at Emmaus that means a lot. It is known to the students, parents and the wider community and it is a very powerful ethos that underpins our College.

Emmaus is a vibrant enterprise with a warm, caring and welcoming atmosphere. The College embraces change through the energy and verve of teachers, students and parents, all working together to maximise student learning.

This year we had a particular focus on inspiring learning by providing meaningful and relevant learning experiences that are connected to the lives of young people. It is our belief that if students see value in learning they will flourish and become professional learners in this ever-changing world.

In this way, 2022 at Emmaus will help students with their personal quest of developing new knowledge and skills, greater self-confidence, a personal and national identity, and an understanding of their role in a globalised world.

This is achieved through well-crafted academic, sporting, spiritual and cultural programs whose success is dependent upon positive relationships that connect students with each other, their families and their teachers.



OUR FIRST PEOPLES

Emmaus College Jimboomba acknowledges the Yugambah people as the Traditional Owners of the land on which our school is placed.

We are inspired and nurtured by the wisdoms, spiritualities and experiences of our First Nations Peoples. Together we work actively for reconciliation, justice, equity and healing.

VISIT US IN 2022

Open Day
9.00 – 10.30am

Wednesday 23rd February
 Wednesday 4th May
 Wednesday 10th August
 Wednesday 12th October

QUICK FACTS

- Agriculture Show Team
- Arts Showcase Evening
- Biannual Musical
- Concert Band and Ensembles
- Equestrian Team
- Instrumental Music lessons
- Junior Years Choir
- Rugby League Skills Development Program
- Student Council
- St Vincent de Paul Sleepout

GENDER

Co-educational

YEAR RANGE

Prep - Yr 12

ENROLMENT

1,560 students

YEAR 7

150 students
5 classes

LANGUAGES

Japanese for Year 7

FEES 2022

Yr 7 \$5,400
Yr 12 \$5,445

QCE SUBJECTS

26
3 Certificate courses

VET

Yes

UNI OFFERS

Available on request

CONNECT VIA





Iona College

Est. 1957

'A Ministry of the
Missionary Oblates of
Mary Immaculate'

KEY INFORMATION

Address 85 North Rd, Lindum QLD 4178
Telephone 07 3893 8888
Website iona.qld.edu.au
Rector Fr Michael Twigg O.M.I.
Principal Mr Trevor Goodwin
Enquiries Registrar
Email enrol@iona.qld.edu.au

WHAT MAKES US SPECIAL

As a Catholic school in the Oblate religious tradition, Iona College focuses on educating and empowering young men to dare to make a positive, spiritual and practical difference throughout their lives and the lives of others. Our curriculum provides a wide range of opportunities to cultivate the individual talents of each boy, including marine science and aerospace programs. Iona College understands that the dreams and talents of each student are unique. Student learning is fostered in an environment that is challenging, engaging and supportive, and classroom activities are designed to be enjoyable, stimulating, and authentic. It is our hope that students not only experience a positive school culture and environment, but they are also taught how to enhance their personal wellbeing, deal with life's challenges, live a life of meaning and purpose, strengthen their relationships with others and with God. In partnership with our families, we strive to produce men who enter our community to learn and leave to serve.

BUILDING RESILIENCE

Iona is a Visible Wellbeing school, in partnership with Professor Lea Waters from the University of Melbourne. At Iona College, the focus on holistic development is demonstrated through this connection. To guide this approach, Professor Waters has developed the SEARCH wellbeing framework which prioritises the following domains of wellbeing: Strengths, Emotional Management, Attention and Awareness, Relationships, Coping, Habits and Goals. The PROSPER program being delivered to students at Iona focuses on specific skills that will assist them to strengthen their relationships, build positive emotions, enhance personal resilience, promote mindfulness, and encourage a healthy lifestyle. Such lessons set students up to prosper both here and beyond the gates of Iona College. The Positive Education Model developed for Iona (based on the SEARCH wellbeing framework) outlines seven specific areas:

Positivity - guiding students to develop positivity skills and experience positive emotions, such as gratitude and mindfulness.

Resilience - supporting students to develop the skills and attitudes that underpin resilient behaviour.

Outcomes - the provision of an optimal learning environment to enhance student outcomes and accomplishment.

Strengths - developing personal character strengths and promoting a growth mindset.

Purpose and Meaning - supporting students to develop a sense of purpose, meaning and faith.

Engagement - encouraging and tracking student engagement in a variety of College activities.

Relationships and Respect - supporting students to develop the social skills and pro-social values that underpin positive relationships.



YURA / WELCOME

Iona College acknowledges the Quandamooka People as the Traditional Owners of the land on which our school is placed. We are inspired and nurtured by the wisdoms, spiritualities and experiences of our First Nations Peoples. Together we work actively for reconciliation, justice, equity and healing.

VISIT US IN 2022

We invite parents and potential families to view our Virtual Tour: https://youtu.be/Za_102mfUlc

Open Day 2022 is planned for 31 May, subject to confirmation.

Iona is an inclusive school for a diverse range of students. Everyone is welcome!

QUICK FACTS

- Iona offers daily Mass and a faith and service program that connects with our local community
- Iona's 'Year 13' program connects Old Boys with new students
- We have a high-performance program for elite athletes
- Students have access to flight simulators
- An Outdoor Education Program is in place
- Iona's Reconciliation Action Program (IRAP) promotes reconciliation
- We have an Enrichment and Enhancement Program
- Service based portfolios frame Iona's student leadership
- Iona's Pathways Centre supports students with career decisions
- Year 10 Wilderness Camp provides a unique opportunity

GENDER

Boys

YEAR RANGE

Yr 5 - 12

ENROLMENT

1,820 students

YEAR 7

280 students
10 classes

LANGUAGES

Japanese

FEES 2022

Please visit website for fee schedule

QCE SUBJECTS

31

VET

Yes

UNI OFFERS

97%

CONNECT VIA





Loreto College Coorparoo

Est. 1928

'Seekers of truth and doers of justice'

KEY INFORMATION

Address 415 Cavendish Rd, Coorparoo QLD 4151
Telephone 07 3394 9999
Website loreto.qld.edu.au
Principal Kim Wickham
Enquiries Ange Glancy
Email enrol@loreto.qld.edu.au

WHAT MAKES US SPECIAL

Loreto College Coorparoo is a special place. The legacy of our founder, Mary Ward, a pioneer in girls' education, means our students are well-prepared for the future. The Loreto Education Philosophy embraces the ideals of Mary Ward, together with Gospel values. Our students are encouraged to act with personal responsibility coupled with the search for truth and a passion for justice. An education based on such fundamental human values means our students participate in an education which is responsive and relevant to our present reality and the future.

A structured and innovative curriculum is led by expert teachers who are leaders in their fields. Students are educated in a supportive environment which utilises a pedagogical framework founded on evidence-based teaching strategies and is supported by cutting-edge technological infrastructure.

Parents are provided access to their daughter's progress through learning analytics, a parent portal and multiple opportunities to make connections with our College leaders and staff. Virtual and real-time connections between parents and staff strengthen meaningful partnerships which support our students.

With a focus on authenticity, students are prepared for life in a rapidly changing world where they build their identity; multiple leadership opportunities mean students are empowered as confident, critical thinkers who are champions of change. They understand the transforming role of women in our society, the benefits of educational excellence and their agency to make a difference for good in the world.

BUILDING RESILIENCE

At Loreto College Coorparoo, students are at the heart of all we do. We are committed to cultivating resilience, confidence and self-determination by creating an environment where each student is known and valued. We know that the emphasis on a holistic education supports a sense of success.

The partnered focus on academic learning with wellbeing is crucial – as without one, the other will not happen. We provide a breadth of opportunities to enable students to explore their potential, including their leadership capacity. We acknowledge the importance of challenging and developing student voice, providing opportunities for students to enhance their capabilities and raise awareness of social justice issues.

Our award-winning Teaching and Learning Framework has seen the development of student activities that have encouraged them to be optimistic about their learning and future with a growth mindset. We are equipping students with skills and strategies to persevere, knowing that setbacks make them stronger and develop resilience. We ensure our students show courage when faced with challenges and are not afraid to take risks or fail.



OUR FIRST PEOPLES

Loreto College Coorparoo acknowledges traditional custodians of the land upon which our school is placed, the Jagera people of the Turrbal nation.

We pay our respects to their elders both past and present, for they hold the memories, the culture and the wisdom upon which our nation's future will be built. We look forward to working together towards reconciliation, justice and healing.

VISIT US IN 2022

Please visit the College website for tour dates and Open Day information.

QUICK FACTS

- 100% Queensland Certificate of Education
- Each student has a nominated teacher mentor
- Highest participation in CaSSSA sporting competition
- Dedicated literacy and numeracy lessons
- Extension and acceleration opportunities
- Vibrant service program
- Biennial drama productions and musicals
- Interstate and international links with Loreto schools and organisations
- Tutorial programs

GENDER

Girls

YEAR RANGE

Yr 7 - 12

ENROLMENT

910 students

YEAR 7

160 students
6 classes

LANGUAGES

French, German & Japanese

FEES 2022

Yr 7 \$11,424
Yr 12 \$11,424

QCE SUBJECTS

35

VET

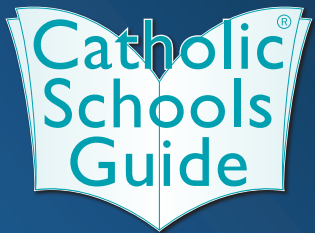
Yes

UNI OFFERS

100%

CONNECT VIA





2022 COMPETITION

BUILD A BIG LEGO TOWER

TO WIN BIG FOR YOUR SCHOOL!

Every Catholic school in Australia is invited to enter this competition to win an All New CommBox Interactive Touch Screen from Integrate AV. Schools may enter as many times as they like.

5 Simple Steps to Enter:

1. Construct the tallest single-stack LEGO tower you can make using only LEGO 8 knob storage bricks.
2. You can use a LEGO base mat for support and build your tower with one single brick on top of each other.
3. Build the freestanding tower as tall as you possibly can without using other aids such as bracing or glue.
4. Once your tower is completed, take a photo of it and count how many single bricks the tower is in height (not counting the base mat).
5. Register your school entry via www.catholicschoolsguide.com.au/competitions/ and include your photo and number of bricks in height.

COMPETITION CLOSING
MONDAY 1 AUGUST 2022
WINNER WILL BE ANNOUNCED MONDAY 8 AUGUST 2022

75" **commBOX**
CLASSIC INTERACTIVE PANEL



Winning Entry

The winning entry will be the tallest tower, as judged by the Catholic Schools Guide and Integrate AV team. The winner will be notified on Monday 8 August and also announced on the Catholic Schools Guide website.

PROUDLY SPONSORED BY

INTEGRATE AV

COMPETITION PRIZE

- ▶ All New 75" CommBox Classic Interactive Touch Screen
- ▶ Integrate AV Motorised Centerlift Mobile Trolley
- ▶ Logitech Brio 4K Webcam
- ▶ Delivery & Installation by Integrate AV
- ▶ 7 Year CommBox Warranty

**ENTER YOUR SCHOOL
TO WIN AN AMAZING PRIZE
VALUED OVER \$9500!**

Terms and Conditions:

Full terms and conditions are listed via Catholic Schools
Guide website catholicschoolsguide.com.au/competition

1800 742 748 [INFO@INTEGRATEAV.COM.AU](mailto:info@integrateav.com.au)



commBOX
CLASSIC INTERACTIVE PANEL



Lourdes Hill College

Est. 1916

'A School of Good Samaritan Education'

KEY INFORMATION

Address 86 Hawthorne Rd, Hawthorne QLD 4171
Telephone 07 3399 8888
Website lhc.qld.edu.au
Principal Robyn Anderson
Enquiries Colette Duval
Email enrolments@lhc.qld.edu.au

WHAT MAKES US SPECIAL

Every student matters at Lourdes Hill College and each is nurtured to become a global star who champions achievement and grows as a leader in the community. With technology bringing education, classroom design and learning to new heights, Lourdes Hill's cutting-edge approach combines the Good Samaritan ideal of balance, citizenship, and hope for the future.

The College takes pride in its academic success. Students are regularly in Queensland's top performing Year 12 students for academic achievement.

And, while most students follow the ATAR pathway, the College provides a wide range of opportunities for students to engage in Vocational Education and Training (VET) options to complement their learning, enabling students to follow their passions. As well the successful VET program, Lourdes Hill College is the Recognised Training Organisation (RTO) for the Diploma of Business.

Learning continues beyond the classroom. Our co-curricular and extra-curricular programs inspire our students to learn new skills, develop their leadership abilities, and provide service to the College and the community.

We offer an extensive range of Co-curricular activities which provide valuable, practical and engaging experiences for our students. These include Debating, Sailing, AFL, Netball, Rowing, Kayaking, Dance and Robotics, as well as the opportunity to work alongside organisations such as Eat Up Australia, Rosies and the Wesley Mission.

BUILDING RESILIENCE

Students develop a sense of respect and compassion for others and learn to act with a sense of purpose and responsibility in alignment with our Benedictine values which underpin Lourdes Hill College. Our student-led 'Space to Be Yourself' project encourages students to embrace tolerance for difference and value the uniqueness of everyone in our community.

Our age-specific, whole-school wellbeing curriculum is designed to support the holistic development of students through an integrated exploration of evidence-based concepts and skills. Learnings from the wellbeing curriculum support student development in all areas of their College life.

In Middle School, we understand that girls are happy and flourish when wellbeing programs are aligned to this important stage of their development. We believe that positive relationships with friends, in a secure environment, supported by teachers who know them well are key elements to ongoing success.

Our wellbeing curriculum program for Senior Years is designed specifically to encourage students to develop the knowledge and skills required to make healthy, life-giving choices both at school and in life beyond Lourdes Hill College.



OUR FIRST PEOPLES

In the spirit of Reconciliation, Lourdes Hill College acknowledges the traditional custodians and descendants of the land on which we stand, the Turrbal and the Jagara people. We recognise the elders of this land, past, present, and future and their deep commitment to continually maintain their sacred traditions to care, love and learn.

VISIT US IN 2022

Discover Lourdes Hill College by taking part in a student-led guided tour of our beautiful grounds and facilities. Tours are held fortnightly.

To book and to learn more about Lourdes Hill College visit our website.

QUICK FACTS

- Nurtures an inclusive and contemporary Catholic Learning community
- Inspires young women to create a better world
- Educates and empowers students to embrace a love of life and learning
- Provides Middle and Senior School Student leadership opportunities
- Wellbeing program designed to align with students' specific stages of development
- Academic Mentoring program pairing students with mentors
- Inclusive Mirragin program for our First Nations students
- Strong alliances with our stakeholder groups
- Co-curricular opportunities in Sport, Service and Culture
- Extensive range of service groups.

GENDER

Girls

YEAR RANGE

Yr 7 - 12

ENROLMENT

1,250 students

YEAR 7

Visit our website

LANGUAGES

Japanese

FEES 2022

Visit our website

QCE SUBJECTS

39

VET

Yes

UNI OFFERS

94%

CONNECT VIA





Marist College Ashgrove

Est. 1940

'Viriliter Age - Act Courageously'

KEY INFORMATION

Address 142 Frasers Rd, Ashgrove QLD 4060
Telephone 07 3858 4555
Website www.marash.qld.edu.au
Principal Michael Newman
Enquiries College Registrar
Email enrol@marash.qld.edu.au

WHAT MAKES US SPECIAL

Marist College Ashgrove was established in 1940 by the Marist Brothers, and for over 80 years has provided boys an all-inclusive educational environment that is engaging, challenging and empowers young men to achieve their personal best.

With a combination of 1,700 day and boarding students from Years 5 to 12, our students are diverse, and come from varying parts of the world to receive a Catholic education in the Marist Tradition and charism.

The College is set on a beautiful, leafy 26 hectares in Ashgrove – one of Brisbane's most sought-after, blue-chip suburbs, and is only 7 kms from the Brisbane CBD.

The College offers an array of high calibre academic subjects, a stellar music program and sporting opportunities and on-site facilities that are among the best in Queensland.

Marist College ensures each boy is known and cared for individually ensuring they can achieve their personal excellence in all areas.

BUILDING RESILIENCE

Sustainability Program

Building within the boys a resilience to stand up for the care and enrichment of our environment is quintessential. The College has undertaken a number of initiatives to help make the College more sustainable. By reducing waste in both energy and water, we aim to develop and maintain a rate of use that preserves an ecological balance.

We are continually planning for sustainability, and over the past 5 years, the College has installed solar panels, water tanks, power factor correction units, thermal comfort control systems and we've transitioned to LED lighting. We have created an achievable framework and continue to build on our sustainability program year on year.

Year 13 Program

Building the confidence, skills and positivity of our Year 7 boys from day one is vital as they enter the secondary College. At Marist, we offer a highly personalised Catholic education, and students leave our care confident both intellectually and socially, aware of the world around them, respectful of others, and ready to meet the challenges of the next stages in their education and in their lives.

So, who better to mentor our Year 7 boys? Our Year 13 Program ensures our Year 7s have a smooth transition into high school. Recent graduates return to the College to show the boys around, attend their lessons and make sure they are familiar with our processes.

They provide important feedback to Pastoral leaders on how our new students are settling in to College life.



OUR FIRST PEOPLES

Marist College Ashgrove acknowledges the Turrbal People as the Traditional Owners of the land on which our school is placed.

We are Inspired and nurtured by the wisdoms, spiritualities and experiences of our First Nations Peoples. Together we work actively for reconciliation, justice, equity and healing.

VISIT US IN 2022

Head of College Tour Dates:

- Friday 4 March
- Friday 27 May
- Sunday 19 June
- Friday 29 July
- Friday 14 October

Visit our website to book a tour.

QUICK FACTS

- One of the largest boys boarding schools in QLD
- 26-hectare property, 7kms from Brisbane's CBD
- NAPLAN 2021 results improved by 70%
- Marist charism emphasises being humble, genuinely present to others, giving of one's self – especially to those most in need and living the gospel through the eyes and heart of Mary
- Nationally recognised music program
- 2021 AIC Track and Field Champions, both Primary and Secondary
- Large sustainability program
- Founded by the Marist Brothers in 1940
- 16 different sporting codes on offer
- Famous Old Boys include former PM Kevin Rudd and sportsman John Eales

GENDER

Boys

YEAR RANGE

Yr 5 - 12

ENROLMENT

1,700 students

YEAR 7

260 students
9 classes

LANGUAGES

French & Japanese

FEES 2022

Please visit
College website.

QCE SUBJECTS

39

VET

Yes

UNI OFFERS

81%

CONNECT VIA





Mary MacKillop College

Est. 1964

'My Faith is My Light'

KEY INFORMATION

Address 60 Bage St, Nundah QLD 4012
Telephone 07 3266 2100
Website mmc.qld.edu.au
Principal Josephine Griffiths
Enquiries Hayley Murphy
Email enrolments@mmc.qld.edu.au

WHAT MAKES US SPECIAL

Mary MacKillop College prides itself on being a joy-filled learning community where students and staff raise the bar to *Become, Flourish and Lead the Way* as MacKillop people.

Highly qualified and dedicated academic staff, teaching in their fields of expertise, work enthusiastically with eager students to equip them with the skills to cultivate their creativity, stretch their curiosity, activate their self-direction, and harness their resilience.

Our distinctive Learning Virtues and College Values nurture, challenge and empower our MacKillop Women to be people of purpose.

Science, Technologies, Engineering, Arts and Mathematics, along with an extensive sporting program, music ensembles, QDU debating, as well as immersions and outdoor education expeditions, are evidence of our commitment to the holistic development of each student.

Families appreciate how well their daughter is known and cared for, the focused leadership experiences, the innovative academic programs on offer, and the diverse, yet customised, opportunities that abound where each MacKillop Woman harnesses her potential.

BUILDING RESILIENCE

Wellbeing for Learning Framework: The MacKillop Way, Positive approaches to behaviour, our Learning Virtues and College Values, underpin our commitment to positive mental health to strengthen students' learning potential.

Buoyancy and Spirit: Quality attributes are our focus in learning and our tailored personal development programs. Students are taught how to embrace their academic, cultural, and sporting pursuits with courage. They learn to recognise adversities and respond with resolve to adjust their thinking, behaviour or emotions to effectively address episodes of concern, dips in motivation or negative interactions that may manifest in their lives from time to time and be equipped to respond successfully.

Cultivating Wisdom: MacKillop Women are successful in their endeavours because they practise self-efficacy and persistence, participate in unfamiliar activities and learn from feedback to develop their character.

Celebrating Success: We honour students' remarkable leadership accomplishments, significant academic achievements, commitment to enterprises that are fair and equitable, and determination to act justly for the benefit of others and our world.

Interconnectedness: Through purposeful engagements with parents, university partners, innovative business partners and our local communities, our strategic approach to learning and teaching harnesses evidence-based research to consolidate positive interpersonal relationships for MacKillop Women to flourish.



OUR FIRST PEOPLES

We acknowledge the Turrbul People, the traditional owners of the ground on which Mary MacKillop College is situated.

Together, we are inspired to work actively for reconciliation, justice, equity, and a hope-filled future.

VISIT US IN 2022

A MacKillop Education in the Josephite Tradition is worth having. Expectations are high and learning is prioritised. We identify students' strengths and harness potential as we forge a culture of curiosity, creativity, self-direction, and resilience. Join us for **Open Day 2022** – see College Website for details.

QUICK FACTS

- Strong & Successful Orientation and Transition Program
- Leading with Purpose Formation and Student Advocacy opportunities
- E.P.I.C. Extension (Professionals & Educators working with Our Future)
- Engineering offered & Master Planned S.T.E.A.M. Precinct
- No extra cost all-inclusive sporting program and digital device program
- State & National Awards – Young Archie; Creative Gen; Design Tech; Brisbane Portrait Prize
- Outdoor Education; Retreats; Social Justice Outreach; Immersions
- Creative Excellence Showcase; Music ensembles; Private Tuitions

GENDER

Girls

YEAR RANGE

Yr 7 - 12

ENROLMENT

670 students

YEAR 7

120 students
4 classes

LANGUAGES

Japanese

FEES 2022

Please see College Website for details

QCE SUBJECTS

28

VET

Yes

UNI OFFERS

100%

CONNECT VIA





Mount Alvernia College

Est. 1956

'Flourish at Mount Alvernia College'

KEY INFORMATION

Address 82 Cremorne Rd, Kedron QLD 4031
Telephone 07 3357 6000
Website mta.qld.edu.au
Principal Samantha Jensen
Enquiries Camilla Horn
Email enrolments@mta.qld.edu.au



OUR FIRST PEOPLES

Mount Alvernia College acknowledges the Turrbal and Jagera People as the Traditional Owners of the land on which our college is placed.

We are inspired and nurtured by the wisdoms, spiritualities and experiences of our First Nations Peoples. Together we work actively for reconciliation, justice, equity and healing.

VISIT US IN 2022

Our annual Open Day is held each May – full details can be found on our College website. College tours are also available by appointment.

Please contact Camilla Horn to organise:
enrolments@mta.qld.edu.au

QUICK FACTS

- Academic Mentoring
- CaSSSA Sports
- Community Outreach
- Environmental Sustainability (La Foresta)
- Franciscan College Instrumental Programme
- Pastoral Care
- Principal's Reading Challenge
- Raise the Bar
- Read like a Girl
- Student Enrichment and Advancement

GENDER

Girls

YEAR RANGE

Year 7 - 12

ENROLMENT

930 students

YEAR 7

160 students
6 classes

LANGUAGES

Italian & Japanese

FEES 2022

Please refer to our website

QCE SUBJECTS

30

VET

Yes

UNI OFFERS

57.6%

CONNECT VIA



WHAT MAKES US SPECIAL

Shaping our future

Mount Alvernia College is inspired through the lives of Saint Francis and Saint Clare of Assisi, and the founder of the Missionary Franciscan Sisters of the Immaculate Conception, Elizabeth Hayes. Each patron offers students, staff and our wider community the unshaken ability to act as agents of change, global thinkers and to emulate a "we not me" approach to life.

Our Year level-based pastoral guardian system ensures that each student is not only known by name, but valued, respected and future-ready as she embarks into adulthood – a vivacious woman of Mount Alvernia. As a College, we pride ourselves in fostering the growth of highly developed, emotionally resilient, women of distinction. Simply, we exist to empower students to be hope-filled with a desire for learning and life – equipped to transform the world.

BUILDING RESILIENCE

Over the past twelve months, the world has endured some extremely challenging narratives. We have made it our mission as a community to be instruments of change and restoration. Under the direction of our Deputy Principal of Identity and Religious Life, Richard Rogusz, the College makes it a priority to involve our community in various outreach programs, including the Vinnies School Sleep Out, Project for Humanity and R U OK Day to name a few. The core focus of such programs is to educate students on their opportunity to be the next generation of change makers and earth shakers.

We instil resilience in our students through our innovative learning and champion programs, and aim to expand student thinking and foster a sense of courage through our Leadership Development Program, Raise the Bar. This program is designed to offer all students the opportunity to develop the skills to be an exceptional leader. Raise the Bar empowers students in school decision making through involvement in school life, enabling a greater sense of belonging and connectedness. Components of the program include community service outreach activities, public speaking training, peer support and conflict management training and active involvement in cocurricular activities and committees.

We pride ourselves on our unique ability to equip young women to understand the learning dispositions they need to achieve their goals in life. Under the direction of our Principal and Deputy Principals of Development and Learning, students develop critical thinking strategies throughout their time here at Mt A. Our students leave the College with a strong ability to communicate clearly and truthfully, engage in problem solving and collaborate effectively with others. With our Franciscan narrative guiding us, students uphold an ethos of bold aspirations, ethical relationships and agile solutions – all stemming from a community of faith that is inclusive, welcoming and generous in nature.





Mt Maria College Petrie

Est. 1987

'Lead by Example'

KEY INFORMATION

Address Armstrong St, Petrie QLD 4502
Telephone 07 3285 5500
Website www.mmcp.qld.edu.au
Principal Wayne Chapman
Enquiries Ricayla George
Email spetrie@bne.catholic.edu.au

WHAT MAKES US SPECIAL

Established in 1987, Mt Maria College Petrie is a small Catholic coeducational college for students in Years 7 – 12 in the Marist Tradition. Nestled on four hectares of gardens and bushland and located in the education precinct of the University of the Sunshine Coast and Our Lady of the Way Catholic Primary School, the campus provides a beautiful backdrop for teaching and learning. All aspects of College life are characterised by the Marist principles of presence, simplicity, love of work, family spirit and in the way of Mary. These principles provide a meaningful lens to connect the young people in our care to a deeper understanding of themselves, their purpose and their place in the world.

Central to our existence is a genuine concern for each student's academic, spiritual, physical and personal development. Personal formation and building confidence and self-esteem in every student is paramount. Our aspirational mantra of 'High Expectations, Resilience and Perseverance' is a personal excellence standard and an invitation for students to do their best learning in our safe, supported and caring environment. The College offers a flexible and engaging curriculum to meet the needs of all students ranging from those with tertiary aspirations to those with specific educational needs. A broad range of offerings in subjects, courses and cocurricular activities is delivered by our expert teaching staff. As we are small enough that each student is known as an individual, our aim is that their potential is ignited and nurtured so they can be successful at school, and in life beyond school.



OUR FIRST PEOPLES

Mt Maria College Petrie acknowledges the Turrbal People as the Traditional Owners of the land on which our school is placed.

We are inspired and nurtured by the wisdoms, spiritualities and experiences of our First Nations Peoples, and we honour their connection to land, water and culture. Together we work actively for reconciliation, justice, equity and healing.

VISIT US IN 2022

Our Virtual Open Day is on Wednesday, 20 July 2022, 6.30pm

Principal's Tours are held Monthly on a Tuesday morning during Term time.

QUICK FACTS

- Student Leadership Summit
- Early entry to university courses
- Regular homework tutorials
- Cultural immersion trips and programs
- Outreach activities, Breakfast Club and Care to Cook
- Interschool SECA, District and Metropolitan North Sport
- Formula Student, students build and race a car
- Computer and Film & Media Club
- Debating and Theatre Sports
- Choir and Band

GENDER

Co-educational

YEAR RANGE

Yr 7 - 12

ENROLMENT

530 students

YEAR 7

97 students
4 classes

LANGUAGES

French

FEES 2022

Yr 7 \$5,865
Yr 12 \$6,155

QCE SUBJECTS

27

VET

Yes

UNI OFFERS

98%

CONNECT VIA



BUILDING RESILIENCE

"We have students here achieving incredible results in high level general subjects who are aiming for university entrance, alongside students in pursuit of trades and other pathways." Wayne Chapman, Principal.

Mt Maria Petrie is a place where learning and pathways are responsive to the changing needs of students as they progress through their high school years. The College is in the education precinct at Petrie and is close to the University of the Sunshine Coast where our students access university subjects in years 11 and 12. There are strong relationships with TAFE and other tertiary providers allowing students to gain a head start by completing certificate courses towards career and study pathways beyond school. Students are equipped with technology and remote learning skills that allow them to be flexible and resilient learners in any environment. A key element of the College's success with students, and what staff do exceptionally well, is support our young people to thrive in their learning and development through adolescence. Being a school of just over 500 students makes us small enough to know each student individually, and big enough to offer a breadth of opportunities. Every student has a pastoral care teacher responsible for looking after them during their time at the College. Students and their families are invited to live the College community mantra of High Expectations, Resilience and Perseverance every day.





Our Lady's College

Est. 1964

'Inspiring Young Women since 1964'

KEY INFORMATION

Address 15 Chester Rd, Annerley QLD 4103
Telephone 07 3426 8000
Website ourladyscollege.qld.edu.au
Principal Ms Andree Rice
Enquiries Enrolments Officer
Email sannerley@bne.catholic.edu.au

WHAT MAKES US SPECIAL

Our Lady's College students are "equipped to pursue a lifelong love of learning, embrace change readily and live with an attentive mind and heart for others." Our Mission is to provide a high quality affordable Catholic education for young women in a vibrant, caring and engaging environment, that lives our Tradition, strives for Excellence and engages in our Community. Inspired by the legacy of St Mary (of the Cross) MacKillop, lessons learnt at Our Lady's College last long beyond the classroom. At Our Lady's, "every girl is well-known" and encouraged to embrace change and live by the College motto and challenge of "Ad Altiora" (Ever Higher). With a focus on careers and pathways for the future, our academic, vocational, and extra-curricular programs are tailored for girls to become self-directed and reflective individuals who contribute positively to a changing world, whilst honouring a proud tradition of educating, inspiring and empowering young women for over 55 years. Learning success is supported by before and after school tutoring, past student academic mentoring and numerous job skills, work placement and community partnership programs. Our Lady's is conveniently located in Annerley, just 7km south of the CBD. The College is accessible by public transport and a private College bus service with pick-ups and drops-off in Yeronga, Tennyson, Corinda, Darra, Inala and Forest Lake. Enactment of the Master Plan has resulted in the College facilities, equipment and streetscape growing and changing significantly to accommodate a modern resource centre, state of the art science laboratories, theatrette, café and an outside deck overlooking grassy playing fields.

Come visit us in 2022 and see what makes Our Lady's College the perfect choice for your daughter!

BUILDING RESILIENCE

During increasingly challenging global times, we prepare our girls to be compassionate, strong, confident, and decisive leaders. As a school community, even during challenging and unprecedented times, we find ways to link our community and celebrate what's important to us. Our one-to-one senior academic mentoring program enables students to focus on goal setting, reflect on their performance, be guided through different study techniques and tools, and discuss strategies to improve their results with a member of the College Leadership Team or pastoral specialists. This helps to build resilience through enhanced self-awareness, increased self-confidence and more control over their future pathways and pursuing job opportunities post school. In 2020, Our Lady's College student and dux Blessy Matthews was one of the top 60 students in Queensland, receiving an ATAR score of 99.9. She attributes her success to the Our Lady's teaching environment, pastoral care support and guidance received in her senior year. Our pastoral care program underpins all year levels and focuses on highly relevant life skills – transition & change, grit & determination, fostering a growth mindset, respectful & healthy relationships, optimism, maintaining balance, meaning and purpose, and domains of health and wellbeing.



OUR FIRST PEOPLES

Our Lady's College acknowledges the Jagera and Turrbal People as the Traditional Owners of the land on which our school is placed.

We are inspired and nurtured by the wisdoms, spiritualities and experiences of our First Nations Peoples. Together we work actively for reconciliation, justice, equity and healing.

VISIT US IN 2022

College Tours with the Principal and Student Leaders are held on the last Friday of the month during term time, starting at 8am.

Registration for College Tours is essential and can be made via the College website.

QUICK FACTS

- Academic Mentoring
- CoMPASS Program
- STEM Ambassadors
- BCE Student Voice
- Lord Mayor Youth Advisory Council
- ACE employability
- Arts & Instrumental Program
- CaSSSA Sports
- Big Sister Program
- SRC, Social Justice, Liturgy, Cultural & Sports Committees

GENDER

Girls

YEAR RANGE

Yr 7 - 12

ENROLMENT

320 students

YEAR 7

58 students
2 classes

LANGUAGES

Spanish

FEES 2022

Refer to Website

QCE SUBJECTS

18

VET

Yes

UNI OFFERS

Refer to Website

CONNECT VIA





Padua College

Est. 1956

*'Where there is love and wisdom
there is neither fear nor ignorance.'*
St Francis

KEY INFORMATION

Address 80 Turner Rd, Kedron Brisbane QLD 4031
Telephone 07 3857 9999
Website padua.qld.edu.au
Principal Mr Peter Elmore
Enquiries Ms Patricia Watkins
Email enrolments@padua.qld.edu.au

WHAT MAKES US SPECIAL

Padua College is the only school in Australia under the care of the Order of Friars Minor. Inspired by the teachings of St Francis, the Franciscan Friars established Padua College as a school to cater for boys from Years 5 to Year 12.

Over sixty-five years on, the College has grown to 1450 students, and while there have clearly been some educational changes over this time, we still hold our Franciscan heritage very close to our heart.

The College offers a holistic education, including an engaging religious formation and pastoral care program, an inclusive and comprehensive curriculum, many co-curricular opportunities and a developmental outdoor education program.

We inspire and engage our learning community by being leaders in boys' education through a learning culture underpinned by self-efficacy and excellence. We deliver dynamic, innovative pedagogy in the three phases of learning from Year 5 through to Year 12.

BUILDING RESILIENCE

The last two years has certainly highlighted some of the challenges the world is facing. Eight hundred years ago, the world also had some challenges when St Francis of Assisi heard the words of Jesus to "Go and rebuild my Church". Francis saw a different world from the one perceived by most people of his time.

While our complex world of today is a lot different from the world of St Francis, the values of a Franciscan education remain just as important, as we prepare our students for the world beyond school.

No generation has had to adapt to change as those living in this 21st century. Much of this has been driven by technology, social media and global health. Diverse opinions are often readily available, and many of us are left overwhelmed by the enormity of the tasks ahead of us.

Amid rapid change, there is a way forward. Here at Padua College, we recognise the need to be challenged and embrace developing resilience. We aim to shape strong, confident young men in the Catholic tradition, introducing our students to a Franciscan world view, permeated by our values of Joy, Courtesy, Humility, Simplicity and Peace.

There is no better recipe for living in a society where everyone is inspired to adapt and flourish, where respect is offered to all, and where servant-leadership promotes a world where the dignity of each individual is central to our values system.

The College community supports our boys to become the best that they can be. Together with our Paduan families, we raise young men with a quiet strength, which enables them to achieve and contribute positively to their community and to the world beyond the College.



OUR FIRST PEOPLES

We acknowledge the Turrbal and Jagera Peoples in Brisbane, and the Gubbi Gubbi People at Pomona as the traditional custodians, past, present and emerging, of the land and waters where Padua College stands. We pay our respects to them.

VISIT US IN 2022

We invite you to experience Padua College at our Open Day on Sunday 22 May 11:00am-2:00pm, or at one of our Rector's Tours to view Padua College on a normal school day.

Details via <https://padua.qld.edu.au/enrolment-information/open-day/>

QUICK FACTS

- Australian Space Design Competition Years 9 to 12
- Junior Space Design Competition Years 5 to 8
- Mooting
- Stem Extension
- The Learning Nest – Homework Club Years 7 to 12
- Green Team
- Rosies
- Good Samaritans
- Makerspace
- Book Club
- Readers Cup Years 5 to 9

GENDER

Boys

YEAR RANGE

Yr 5 - 12

ENROLMENT

1,450 students

YEAR 7

200 students
7 classes

LANGUAGES

Japanese

FEES 2022

Yr 7 \$9,745
Yr 12 \$11,005

QCE SUBJECTS

General subjects (25)
Applied subjects (10)
Vocational Certificates (11)
Diplomas (1)

VET

Yes

UNI OFFERS

95%

CONNECT VIA





San Sisto College

Est. 1961

'Women of Integrity Shaping the Future'

KEY INFORMATION

Address 97 Mayfield Rd, Carina QLD 4152
Telephone 07 3900 9800
Website sansisto.qld.edu.au
Principal Shelley Hamilton
Enquiries Helen Steffan
Email scarina@bne.catholic.edu.au

WHAT MAKES US SPECIAL

San Sisto College has successfully educated young women for over sixty years, inspiring them with multi-dimensional thinking skills and a desire to pursue post school options with vision and determination. This has in turn empowered our students to live the college motto "Women of integrity shaping the future".

With the rapid development of technology, there is a need for individuals to have a broad range of attributes such as fluidity, informed problem-solving and critical thinking skills, and adaptive reasoning abilities. In addition, new advances in the 21st century mean that many young citizens will be working in occupations in the future that do not currently exist. San Sisto College embraces agile and innovative education and pedagogical practices that equip students with contemporary skills and traits to succeed, whilst prioritising and nurturing each student's unique learning journey. Our expert teaching team pursues leading-edge, best practice pedagogy informed by evidence-based research, and evaluates data profiles to understand student progress, growth and success. They develop strategic, carefully integrated programs to maximise learning.

To provide progressive, real-world experiences, San Sisto College partners with leading universities and institutions, such as the University of Queensland, Monash University, Queensland Minerals and Energy Academy (QMEA), the Queensland Debating Union (QDU) and technology providers. Students at the College passionately engage with a vast array of co-curricular opportunities ranging from academic (STEM), to sporting (CaSSSA) and cultural pursuits (music, dance and drama). There are a wide range of subject choices, advanced wellness and fitness centres, and support and extension programs to enhance individual student learning. Located in the picturesque, leafy suburb of Carina and with a cohort of 900 students, the College has state of the art facilities and creative learning spaces that enhance the classroom experience and engage a variety of pedagogical strategies.

BUILDING RESILIENCE

San Sisto College's education framework is enveloped by a compassionate and supportive community upheld by the values of truth, joy, faith and prayer, justice and compassion, community and service, and a love of learning – key values of the Dominican way which encourages students to live out their faith in action through social justice and community service. San Sisto College's focus on the holistic development of each student – academically, physically, socially, and spiritually – empowers students to become influential and compassionate leaders in today's contemporary world.

The College's contemporary 'habits of mind and spirit' is a specialist program that fosters confident young women who embrace responsibility and independence. Principal Shelley Hamilton describes the College's ethos: "San Sisto has a vibrant learning culture where our students are known, cared for and nurtured."



OUR FIRST PEOPLES

San Sisto College acknowledges the Jagera People as the Traditional Owners of the land on which our school is placed.

We are inspired and nurtured by the wisdoms, spiritualities and experiences of our First Nations Peoples. Together we work actively for reconciliation, justice, equity and healing.

VISIT US IN 2022

Our Open Day in 2022 is Sunday 22 May. We invite you to meet our students and teachers while exploring our stunning campus and state of the art facilities. Visit our website for details.

QUICK FACTS

- Celebrating 60 years of educating young women.
- Strategic, carefully integrated programs.
- Prioritising each student's learning journey.
- Employing data profiles for student success.
- Each student is supported to be "Women of integrity shaping the future".
- Contemporary and best pedagogical practice.
- Partnering with leading providers such as Queensland Minerals and Energy Academy (QMEA).
- Students live out their faith in action.
- A vast array of co-curricular opportunities.
- State of the art facilities and a new 10-year Master Plan.

GENDER

Girls

YEAR RANGE

Yr 7 - 12

ENROLMENT

900 students

YEAR 7

165 students
6 classes

LANGUAGES

Italian & Japanese

FEES 2022

Please refer to our website.

QCE SUBJECTS

41

VET

Yes

UNI OFFERS

97%

CONNECT VIA





Southern Cross Catholic College

Est. 1995

'We seek the light ...
and then we shine'

KEY INFORMATION

Address 307 Scarborough Rd, Scarborough
QLD 4020
Telephone 07 3480 3600
Website sccc.qld.edu.au
Principal Chris Campbell
Enquiries Trish Young
Email psscarborough@bne.catholic.edu.au



OUR FIRST PEOPLES

Southern Cross Catholic College acknowledges the Gubbi Gubbi People as the Traditional Owners of the land on which our school is placed.

We are inspired and nurtured by the wisdoms, spiritualities and experiences of our First Nations Peoples. Together we work actively for reconciliation, justice, equity and healing.

VISIT US IN 2022

Our College Open Day is on Sunday 22 May, 10am - 1pm.

We also hold Secondary Campus Tours once a term, hosted by our Head of Campus. Visit our website to register your attendance.

QUICK FACTS

- Founded in 1995 when seven Catholic schools in Redcliffe amalgamated
- Four campuses on the Peninsula
- The only Lasallian College in Qld
- Extraordinary alumni including Olympians, politicians, poets, athletes and celebrities
- BCE is the largest employer outside of the Qld government
- 1:1 laptop program Yrs 3-12
- Located overlooking beautiful Moreton Bay
- Resilience and emotional regulation taught from Prep - Year 12
- Pursuit of Excellence programs to encourage and extend
- Our motto 'Seek the Light' calls us to seek the light of Christ and learning.

GENDER

Co-educational

YEAR RANGE

Prep - 12

ENROLMENT

1,600 students

YEAR 7

150 students
5 classes

LANGUAGES

Japanese

FEES 2022

Yr 7 \$6,337
Yr 12 \$6,226

QCE SUBJECTS

34

VET

Yes

UNI OFFERS

85%

CONNECT VIA



WHAT MAKES US SPECIAL

At Southern Cross Catholic College (SCCC), we are *unwavering in our pursuit*. Our pursuit of excellence ensures we constantly challenge ourselves to enable students to find and create their best future. As one college with four campuses on the Redcliffe Peninsula, SCCC provides a unique educational journey for every student. Here your child receives a seamless education from Prep to Year 12 – an education for the whole person where students are provided a broad range of skills to deal with the varied situations and challenges they may encounter throughout their lives.

We fulfil our vision by:

Thinking differently. We give our students the individual attention and access to programs they need to draw out their unique and natural strengths and to help them shine.

Providing opportunity through education. We treat every day as an opportunity to make a positive difference in the world through quality, lifelong learning, a commitment to improvement and continuous innovation.

Nurturing open minds. Our outwardly focused Lasallian values mean we are a community that helps ourselves by helping others first.

Upholding our beliefs. We are a Catholic College that instils a greater sense of purpose and collective pride within our community.

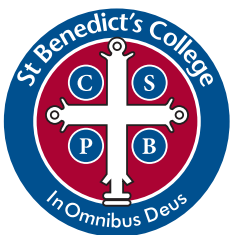
Having high expectations and living by them. We are on a positive and proactive journey of constant improvement, bettering ourselves as we prepare the next generation for their own journey.

BUILDING RESILIENCE

21st century youth have unlimited access to the world. The capacity to build resilience and patience has diminished and as a consequence, regulating emotional responses are often limited. Southern Cross Catholic College has developed proactive strategies to inform learners of how resilience is acquired, particularly in these challenging times. The neuroscience program, Reboot, has been implemented which focuses on a strengths-based approach to engagement and subsequent learning. We encourage learners to be self-aware and self-responsible, enabling better relationships, greater confidence and students who are more resilient, responsible and solutions orientated.

Our Positive Behaviour for Learning Framework (PB4L) is taught to students, ensuring students have their voices heard and they are instrumental in the process of understanding what behaviours are essential. The innovative Sporting Program, along with extra-curricular activities, is available to all year levels to assist in physical movement and allows students to regulate emotions adding to their capacity to build resilience. The College Pastoral system and support networks, including a Formation Program that focuses on real-life strategies for success, ensures we build ongoing capacity for our learners. At Southern Cross Catholic College we are building resilient learners through numerous strategies which engage, regulate and help students build capacity to face life's challenges.





St Benedict's College

Est. 2013

'In Omnis Deus - God in All things'

KEY INFORMATION

Address 21 St Benedict's Cl, Mango Hill QLD 4509
Telephone 07 3385 8888
Website stbenedictscollege.qld.edu.au
Principal Claire McLaren
Enquiries Enrolments Officer
Email smangohill@bne.catholic.edu.au



OUR FIRST PEOPLES

"We acknowledge the Traditional Custodians of the Land on which our College is built, the Gubbi Gubbi People who have walked and cared for the land for thousands of years and their descendants, past, present and emerging who maintain these spiritual connections and traditions." We also acknowledge that we too are one in land, one in spirit, one in faith united in God's love.

VISIT US IN 2022

Visitors Days and Tours are held regularly throughout the year or by appointment.

Please contact our Enrolments Officer to register your interest SMAGEnrolments@bne.catholic.edu.au

QUICK FACTS

- Visual and Media Arts Competitions
- Short Film and Media Competitions
- Student Representative Council
- Honoratus Gifted and Talented Program
- Athlete Development Program
- Instrumental Music Program
- Dance Troupe and Drama
- Science Ambassadors
- Literary Competitions
- Debating Team
- Running Club
- Craft Club
- Overseas Tours
- Robotics Club
- College Choir
- Musicals

GENDER

Co-educational

YEAR RANGE

Yr 7 - 12

ENROLMENT

970 students

YEAR 7

170 students
6 classes

LANGUAGES

Mandarin Chinese

FEES 2022

Yr 7 \$5,623
Yr 12 \$5,961

QCE SUBJECTS

33

VET

Partnerships with a range of external providers

UNI OFFERS

100%

CONNECT VIA



WHAT MAKES US SPECIAL

St Benedict's College is committed to providing high quality, contemporary education in a Catholic Christian context. We believe in the holistic education of young people in the Benedictine tradition based on the values of service, hard work, humility, stewardship, balance and community. We use Christ's model of inclusivity, perseverance and of nurturing each other's gifts and talents to underpin all that we do.

We acknowledge the individual qualities and attributes of each student, and provide a safe and supportive environment that enhances wellbeing and enables students to flourish. We engage in technology-rich, 21st century learning that is designed to be flexible, engaging and innovative.

Learning experiences are designed to imbue in students a love of learning, a sense of curiosity, and an ability to be creative, adaptable and resilient. We support and encourage all students to become successful lifelong learners, confident and creative individuals, and active and informed citizens able to contribute fully to their community and the world in which they live.

We offer small class sizes, a community environment and personal attention from our caring staff. The College is located in the rapidly developing growth corridor in the Moreton Bay Regional Council area within the picturesque suburb of Mango Hill.

St Benedict's is located on eleven hectares with modern, environmentally sustainable, spacious facilities.

BUILDING RESILIENCE

Respect, relationships, and resilience are three key pillars to student wellbeing at St Benedict's College. Our emphasis on positive education, holistic education and restorative practices underpins our desire to nurture happy, resilient young adults. With increasing numbers of young people in Australia experiencing mental health and wellbeing issues, we recognise that there is need for preventative measures that empower and equip students to deal with the growing complexity of their world. Our Pastoral Care program is structured to teach students about resilience and then encourages them to practice being resilient. Resilience is developed like any other skill, by practicing it. The more we practice it the more resilient we become. The ability to bounce forward from a setback is crucial to a satisfying life. Building resilience is key to this.

Our Pastoral Care Teams play a significant and special role in guiding students through adolescence. Their dedication and genuine concern for the students in their care is outstanding. They encourage, support and challenge them to strive to be resilient, to persevere, to reach their potential academically, socially, physically, emotionally and spiritually. Caring pastorally for our students is something we do exceptionally well here at St Benedict's College.





St John Fisher College

Est. 1981

'A Catholic Secondary College for Girls'

KEY INFORMATION

Address John Fisher Dr, Bracken Ridge QLD 4017
Telephone 07 3269 8188
Website stjohnfishercollege.qld.edu.au
Principal Catherine Galvin
Enquiries Jodie Krosch
Email sjfc@bne.catholic.edu.au



OUR FIRST PEOPLES

We acknowledge the Turrbal people of Brisbane (Meeanjin - the place of the blue water lilies) who have been custodians of this area of Bracken Ridge where our College stands, for many thousands of years.

We recognise their continuing connection to the land and waters of this region, and thank them for protecting this land and its ecosystems since time immemorial.

VISIT US IN 2022

College tours are held throughout terms 1-3.

Our Open Day will be held Thursday 10 May from 3:30pm to 5:30pm.

QUICK FACTS

- Vast open spaces and multiple ovals.
- New Design and Technology building.
- Learning Enhancement Acceleration Program for Years 7-9 students.
- Language Immersion Excellence Program in French.
- Variety of transport options.
- Fisher ONE Online Education available in 2022.
- Co-curricular groups and activities for every interest.
- Member of CaSSSA.
- Strong social justice program.
- Partnered with QLD Government to offer school-based traineeships in health at local hospitals.

GENDER

Girls

YEAR RANGE

Yr 7 - 12

ENROLMENT

600 students

YEAR 7

140 students
5 classes

LANGUAGES

French

FEES 2022

Yr 7 \$6,003
Yr 12 \$6,258

QCE SUBJECTS

24

VET

Vet Pathways, AQF Certificates II III & IV, School Based Traineeships, TAFE in Schools

UNI OFFERS

69%

CONNECT VIA



WHAT MAKES US SPECIAL

When a student joins St John Fisher College, she begins her journey for life, joining a family who value her as an individual and gently guide her into an increasingly complex world. St John Fisher is a vibrant community where students are encouraged to become fully involved in the life of the College. We share and celebrate the gifts and talents of all members of our community. The College offers an extensive sporting and co-curricular program where students of all abilities are encouraged to participate. Many of our students go on to compete in the sporting and cultural spheres with great success.

Our students consistently achieve well above the state average in NAPLAN and our Year 12s graduate from the College equipped with tangible outcomes allowing them to make their mark in the world. Set on approximately 15 hectares of land in Brisbane's leafy north, we are a College that demands the best of your daughter in all her pursuits.

BUILDING RESILIENCE

The term resilience has become a common part of vernacular when it comes to raising children, not only within the home, but in schools and educational institutes, and it remains an underpinning value at St John Fisher College, Bracken Ridge. The term refers to how we adapt and cope with life's challenges and we have certainly seen this in action over the last few years. We have proudly observed our girls 'bounce back' from the difficult and stressful situation that COVID continues to throw at us and this soft skill, although not measured in academics, should be applauded. The College has a holistic approach to education to promote the spiritual, social, emotional, physical, and academic growth and we believe this approach supports the development of the person as a whole person. Experts agree that part of building resilience is acknowledging and understanding one's actions and behaviour so we can call on inner strength and those around us, to rise when life challenges us. We support our students through stressful or troubling times through faith, hope and the strength of our community, what we colloquially call, Fisher Fam. We encourage our students to give their best in all pursuits and challenge them to step outside of their comfort zone and give new things a go. Our extensive co-curricular program offers students the opportunity to try new things as well as the tried and tested. Physical challenges, like Kokoda and Darkness to Daylight challenge, are for some whilst others gravitate to challenges of the mind, like Debating and Write a Book in a Day. The social justice program at the College is deeply embedded, and whilst offering students the fulfilment of helping others, it also provides perspective and understanding of the challenges faced by others and the strength and grit they need to survive. Resilience building is also about accepting that life sometimes serves us lemons and that is okay, make lemonade as the saying goes. Charles Darwin is often misquoted in saying "it's survival of the fittest" when what he actually said was; "It is not the strongest of the species that survives, nor the most intelligent, but the one most responsive to change."





St Joseph's College, Gregory Terrace

Est. 1875

*'Servire Deo Sapere –
To serve God is to be wise'*

KEY INFORMATION

Address 285 Gregory Tce, Spring Hill,
QLD 4000
Telephone 07 3214 5200
Website terrace.qld.edu.au
Principal Dr Michael Carroll
Enquiries Mrs Jen Todd - Enrolments
Manager
enrolments@terrace.qld.edu.au
Email



OUR FIRST PEOPLES

As a Catholic School in the Edmund Rice tradition, we acknowledge the Australian Aboriginal and Torres Strait Islander peoples of this nation.

We acknowledge the Turrbal and Jagera people on whose traditional lands our campuses are located. We pay our respects to their ancestors and descendants. St Joseph's College, Gregory Terrace is committed to honouring Australian Aboriginal and Torres Strait Islander peoples' unique cultural and spiritual connections.

VISIT US IN 2022

Visit us at our Open Day on Tuesday 17 May 2022 from 3.30-6pm.

QUICK FACTS

- A dedicated Years 9 and 10 campus
- Learning experiences at our Outdoor Education Centre for every year level
- 18 Rhodes Scholars
- Open classrooms for Senior students during peak study periods
- Extension and support programs for exceptional learners
- A range of 10 sporting opportunities
- Eight culture opportunities including nine music ensembles
- Buddy system for students in Years 5 and 7
- Service ministry programs, providing outreach for marginalised communities
- Home to the largest schoolboy rowing facility in the southern hemisphere.

GENDER

Boys

YEAR RANGE

Yr 5 - 12

ENROLMENT

1,740 students

YEAR 7

235 students
9 classes

LANGUAGES

English, French
& Japanese

FEES 2022

Primary \$15,532
Secondary \$17,192

QCE SUBJECTS

28

VET

Yes

UNI OFFERS

99%

CONNECT VIA



WHAT MAKES US SPECIAL

The Terrace Family has been at the heart of St Joseph's College, Gregory Terrace for over 145 years. Steeped in rich history and tradition, the Gentlemen of Terrace are shaped by the camaraderie and support formed during their time wearing the red and black.

Operating across four campuses, the College offers state of the art facilities at Spring Hill, including a dedicated Years 9 and 10 campus, 10 hectares of sporting fields at Tennyson and an Outdoor Education Centre at Maroon Dam. Terrace strives for excellence in the classroom and is known for celebrating academic achievement. Student performance is tracked from entry to exit, through a detailed examination and assessment process. Exceptional learners at Terrace have access to a wide range of opportunities, including extension courses, Future Problem Solving program and the Terrabots robotics program.

An atmosphere of care is provided by the House System and encourages families to build a strong relationship with Pastoral Care Mentors and House Deans. A highlight for all students is the dedicated buddy system, which pairs Senior students with students in Years 5 and 7, to provide further support. As a Catholic School in the Edmund Rice tradition, students are encouraged to give back to the community through immersions, justice and advocacy programs and House friendship groups.

BUILDING RESILIENCE

Building positive connections, nurturing confidence, and achieving goals are at the heart of resilience. Another uncertain year in 2021 didn't hinder the Gentlemen of Terrace, whether it was battling with voices on stage during House Choir or making history with the first GPS Football Premiership, the Terrace Family finished 2021 with a sense of connectedness to their teachers and peers.

Terrace commits to the education of young men and places great emphasis on the importance of teaching. Terrace Educators are integral to our culture of learning. This is further aided by our newly refurbished flexible learning classrooms, where students can readily collaborate with peers and adapt learning to meet their academic goals. Building resilience is also enhanced beyond the classroom through our co-curricular and pastoral care programs. The College facilitates a comprehensive co-curricular program with a wide range of sporting and cultural activities that encourage discipline, skill excellence and teamwork.

Each year, the Gentlemen of Terrace are given the opportunity to embark on Gospel centred retreats at the College's Outdoor Education Centre. These retreats aim to provide a reflective experience, where each student is supported with seeing the realities of our word in new ways.

The entire Terrace Family works together to empower every gentleman in an atmosphere of care, support, challenge and growth.





St Joseph's Nudgee College

Est. 1891

'Signum Fidei – a Sign of Faith'

KEY INFORMATION

Address 2199 Sandgate Rd, Boondall QLD 4034
Telephone 07 3865 0555
Website nudgee.com
Principal Peter Fullagar
Enquiries Susan Shakespear
Email admissions@nudgee.qld.edu.au

WHAT MAKES US SPECIAL

St Joseph's Nudgee College was established in 1891 and is one of the oldest Catholic boys' boarding schools in Australia. We have a strong culture based upon clear values of courage, excellence, justice, community and authenticity.

Students are taught, nurtured and challenged by teachers who strive for the best in all their students. The holistic education, personal development and wellbeing of each student is a key focus at the College.

Nudgee College students are inspired to build a better world for all through spiritual formation programs, community liturgical events, service learning, advocacy and social justice initiatives.

The support offered by staff is complemented by the excellent facilities across 136 hectares.

Academically, every student at Nudgee College is catered for through the rich and diverse nature of our subject offerings, learning facilities, learning support department, and vocational education and training program. With a focus on 21st century skills, all boys are inspired and taught to be critical thinkers, problem solvers, to create and innovate and to be able to communicate and collaborate.

BUILDING RESILIENCE

The essence of community is ingrained into the fabric of the College. When students are facing an obstacle, they have an abundance of people to help them, such as House Deans, PC teachers, councillors, academic staff, Big Brothers and their fellow 10,000 brothers.

During the pandemic, students and staff adapted well to the *Learning@Home*. Our students have been challenged, but persevered and banded together to overcome adversities.

Year 11 student Lachlan Russell said, "As a student, the pandemic has opened my eyes and deepened my love and appreciation for Nudgee College as well as developed a trust in the College to persist through unprecedented times to ensure us boys can make the most of this once in a lifetime opportunity."

In sports and activities, boys are taught to try their best and treat the opposition, coaches and team members with respect.

Ethan Petcos, 2021 graduate and previous Track and Field Captain, said, "There were many times where I lost hope – times where I wanted to give up simply because it was easy. But I know that is not the 'Nudgee Way'. I had to remember my purpose and remember who I was doing this for."

With unwavering support from Nudgee College, I not only got over the line, but I became the athlete I never thought I could be."



OUR FIRST PEOPLES

St Joseph's Nudgee College acknowledges the Turrbal First Nations Peoples of the lands and waterways we now know as Nudgee.

We are inspired and nurtured by the wisdoms, spiritualities and experiences of our First Nations Peoples. Together we work actively for reconciliation, justice, equity and healing.

VISIT US IN 2022

Our Open Day will be held on Saturday 21 May 2022. Private tours are also available.

Please contact admissions@nudgee.qld.edu.au for more information.

QUICK FACTS

- Boarding school for 130 years
- Over 40 academic subjects
- Campus is 136 hectares
- Sporting and cultural co-curricular activities
- Cattle Club on offer
- The Junior School meets specific needs of Year 5 and 6 students
- The Social Justice Programs are a way in which students put the College values into action
- The Performing Arts aims to develop the skills of every type of performer
- Student Formation promotes positive mindset and a resilient outlook
- The Library is a place of learning, inclusion and acceptance with regular clubs

GENDER

Boys

YEAR RANGE

Yr 5 - 12

ENROLMENT

1,688 students

YEAR 7

220 students
9 classes

LANGUAGES

Japanese

FEES 2022

Available on the College website

QCE SUBJECTS

40

VET

Yes,
RTO Code: 30498

UNI OFFERS

Contact the College

CONNECT VIA





St Laurence's College

Est. 1915

*'A Catholic School for Boys
in the Edmund Rice Tradition'*

KEY INFORMATION

Address 82 Stephens Rd, South Brisbane
QLD 4101
Telephone 07 3010 1111
Website slc.qld.edu.au
Principal Chris Leadbetter
Enquiries College Registrar 07 3010 1104
Email enrolments@slc.qld.edu.au

WHAT MAKES US SPECIAL

St Laurence's College aims to develop men of character who will serve with intelligence, compassion and integrity. For more than 100 years, Lauries has offered an education that broadens perspectives, sharpens minds, strengthens bodies and engages hearts. We are committed to advancing boys' education in Brisbane and are respected for our innovation, philanthropy and inclusivity.

A leader in boys' education since 1915, our outstanding reputation and commitment to educational excellence in the Edmund Rice tradition is encapsulated in our vast and varied learning and co-curricular programs. At St Laurence's College, our welcoming environment enables boys to become involved in the College community through the world-renowned music program, extensive sport offerings, academic programs, and House system. With state-of-the-art facilities including our STEM Building, Sports Centre, outdoor education facility, rooftop field overlooking Brisbane City, playing fields and dedicated Primary Precinct, we aim to provide students with a holistic education that builds upon 21st century skills. The Lauries Journey is a pathway our students travel as they develop from a young boy into a gentleman. Every student feels known and valued for being the person that they are. The Lauries Journey stands out above the rest as student pathways are developed, supported, encouraged, successes celebrated and missed opportunities continually built upon. It is a journey tailored to every individual student that equips our young men with the skills necessary to be successful in life and in the workplace of the future.



OUR FIRST PEOPLES

St Laurence's College acknowledges the Jagera and Turrbal Peoples as the traditional custodians and guardians of the land on which the College is placed. St Laurence's College is inspired and nurtured by the wisdom, spiritualities and experiences of their First Nations Peoples, as they respect the living culture of Indigenous Australians today and together. As a community, the College works actively for reconciliation, justice, equality and healing.

VISIT US IN 2022

St Laurence's College will open its doors to the wider community on Thursday 24 February 2022 for their Open Day. Principal's Tours can be booked via slc.qld.edu.au.

QUICK FACTS

- Agreed Practice Framework clarifies what and why students are learning, and success.
- Curriculum Council ensures teaching and learning is of the highest level.
- Renewed academic focus improved Gold Awards by over 40%.
- Lauries Journey develops character, deepens faith and strengthens self-belief.
- Graduates are confident, capable and compassionate men of faith.
- Associated Independent College's sporting competition.
- Sport Excellence Program ensures elite athletes achieve academic and sporting potential.
- Over 47% participation in the internationally acclaimed Music program.
- Students benefit from academic Pathways, Arts, Sport and Music Programs and Faith in Action initiatives.

GENDER

Boys

YEAR RANGE

Yr 5 - 12

ENROLMENT

1,955 students

YEAR 7

270 students
10 classes

LANGUAGES

Chinese

FEES 2022

Yr 5 \$7,332
Yr 7 \$8,788

QCE SUBJECTS

42

VET

Yes

UNI OFFERS

Contact the College

CONNECT VIA



BUILDING RESILIENCE

Between school, co-curricular activities, work and their social life, teens face lots of new experiences and challenges. Being resilient gives them the ability to tackle these head-on, bounce back from any setbacks and have the best chance at succeeding.

Connection and relationships with students are key in supporting Lauries students and preparing St Laurence's College graduates to enter the world beyond the Lauries gates and continue to be workers and leaders in a digital-first world that demands new skills and dynamic ways of thinking. The College's House system and holistic education provide students with social, emotional and academic support via rich and flexible learning experiences that help build resilience by encouraging them to try new things with emphasis on growth and learning opportunities. Students are empowered to learn in flexible, often collaborative ways, both inside and outside the classroom.

When it comes to building resilience, it is all about the journey and not just the destination! At St Laurence's College, we do not only celebrate the wins, but help students build a positive mindset and a willingness to grow by focusing on progress and not just success. This is achieved through our Mentoring Program across all Year levels, our inclusive policy in sport and recognising and rewarding student academic improvement.





St Mary's College

Est. 1863

'Faithful to God and Integrity'

KEY INFORMATION

Address 11 Mary St, Woodend QLD 4305
Telephone 07 3432 5444
Website www.stmarys.qld.edu.au
Principal Paula Goodwin
Enquiries The Enrolments Officer
Email enrolments@stmarys.qld.edu.au



OUR FIRST PEOPLES

Students, staff and the community of St Mary's College acknowledge the traditional owners and custodians of the land on which we meet, learn and teach. We pay our respect to Elders past and present of the Yuggera, Jagera and Yuggerapul people. We commit ourselves to walking together with Aboriginal and Torres Strait Islander People on the journey towards reconciliation and justice.

VISIT US IN 2022

Join a Principal's Tour or Open Evening to explore our campus, meet current staff and students and find out what St Mary's College can offer you and your daughter. Details on our website.

QUICK FACTS

- Laptop included in school fees.
- Extension opportunities for high achieving students.
- Collaborative agreements with local universities guarantee students entry to some degrees.
- Only all-girls school in Queensland in the Aerospace Gateway to Industry Schools Program.
- Progressive curriculum encompassing VET courses.
- Extensive extra-curricular program of sport, culture and service activities.
- Defence School Mentor to support students of Defence families.
- Aboriginal and Torres Strait Islander Liaison Officer.
- Dedicated Learning Enrichment Centre.
- Strong connections with local parish.

GENDER

Girls

YEAR RANGE

Yr 7 - 12

ENROLMENT

740 students

YEAR 7

135 students
5 classes

LANGUAGES

Spanish

FEES 2022

Yr 7 \$6,270
Yr 12 \$6,475

QCE SUBJECTS

36

VET

Yes

UNI OFFERS

95%

CONNECT VIA



WHAT MAKES US SPECIAL

St Mary's College Ipswich has been educating girls since 1863, when the sisters of Mercy arrived in Ipswich to educate the region's children. Throughout our more than 150-year history, we have grown and developed into a contemporary Catholic school for girls.

St Mary's remains the only all girls Catholic school in Ipswich and the greater western corridor. Our long history educating only girls makes us well placed to tailor a schooling experience that benefits our young women. Our students enjoy every opportunity and are encouraged to explore their interests in any area, free of gender stereotypes. We are proud of our alumnae who have succeeded in many different fields, including medical research, aeronautics, the performing arts, politics, business and much more.

Diverse curriculum offerings and learning pathways ensure all students can succeed academically and are supported to achieve their personal best. Modern, state of the art learning facilities provide specialist spaces for many subjects including science laboratories, dance studio, theatrette, hospitality kitchens, art studios, textiles room and health services space.

Our extensive extra-curricular program of sport, culture and service activities allows students to extend themselves beyond the classroom. Recognising the importance of student well-being for academic performance, students are supported by our Pastoral Care system. Teachers know your daughter and can respond to her needs, offering support and encouragement when required and joining her in celebrating personal successes.

BUILDING RESILIENCE

Students at St Mary's College are inspired by the example of Catherine McAuley and the Sisters of Mercy. Travelling to Ipswich in 1863, the sisters acted with courage, determined to rise to the challenge of establishing a school in the region.

St Mary's provides all young women with opportunities to develop, excel and lead. Our students believe in themselves, have the conviction to meet life's challenges and succeed. As women of Mercy, our students have the strength to stand up, speak out and challenge injustice.

We understand the needs of young women and work proactively to build strength, confidence and resilience. All leadership positions at St Mary's College are filled by girls and our students are encouraged to lead, compete, participate and take risks. Younger students see examples of strength and confidence in our older students and aspire to emulate their success.

The Mercy charism has flowed through many generations and continues to inspire us to perform ordinary things, extraordinarily well. The example of Catherine to go where there was a need to spread mercy, encourages and empowers our students in their words and their actions.





St Patrick's College

Est. 1952

*'Certa Bonum Certamen -
Fight the Good Fight'*

KEY INFORMATION

Address 60 Park Pde, Shorncliffe, QLD 4017
Telephone 07 3631 9000
Website stpatricks.qld.edu.au
Principal Chris Mayes
Enquiries Stacey Bishop
Email enrolments@stpatricks.qld.edu.au

WHAT MAKES US SPECIAL

As a community we strive to build 'Men of Action' at St Patrick's College. Everything we do is designed to support our young men as they strive to be Men of Faith, Men of Learning and Men of Humility. Our philosophy is drawn from our Catholic and Edmund Rice traditions of aiming to transform our students' minds and hearts to build a more just, tolerant, and inclusive community by educating for liberation and possibility. At St Patrick's we understand every young man learns differently, that's why we offer a holistic approach to the education of our young men. Our broad and enriching educational opportunities, combined with our comprehensive co-curricular program, help our students uncover where their passion lies. Whether he plans to undertake tertiary studies or head directly into the workforce, our programs allow each student to work towards achieving his individual goals. He will be taught to be a critical thinker and problem-solver. We will actively encourage him to be a communicator, a collaborator, an innovator and to be globally aware. We will also offer him a world of opportunities to grow beyond the classroom, including social justice immersions, outdoor expeditions and cultural programs or participation in advocacy projects. Our experienced and passionate educators will provide him with a rigorous and stimulating academic environment and encourage him to be an independent learner. Our entire staff take the responsibility of caring for every young man very seriously, with a comprehensive pastoral care system designed to ensure that every individual is valued and nurtured.



OUR FIRST PEOPLES

St Patrick's College recognises the Turrbal people as the custodians and guardians of this beautiful place where learning and ceremony have happened for thousands of years. We pay our respects to all those elders who have gone before us and how have nurtured the spirit of this country.

VISIT US IN 2022

Our College Open Day is on Tuesday 24 May 2022 between 3:00pm and 6:30pm. Individual tours of the College can be arranged via our Enrolments Office enrolments@stpatricks.qld.edu.au or telephone 3631 9025.

College virtual tour
stpatricks.youtour.com.au.

QUICK FACTS

- In 2022 we will celebrate 70 years of educating young men.
- 20 award winning instrumental and vocal performance ensembles.
- Member of the Associated Independent Colleges (AIC) independent school competition.
- Chess, Debating, Theatresports, Art Club, Film Club, Dance Crew and College Musicals.
- Community service with Paddy's Van justice program.
- 2020 - 2030 Masterplan building underway, new facilities open in 2022.
- One-to-one laptop program across all year levels.
- 11 sports offered.
- Alumni Association provides opportunities to current and former students.
- Big Brother - Little Brother pastoral program.

GENDER

Boys

YEAR RANGE

Yr 5 - 12

ENROLMENT

1,400 students

YEAR 7

204 students
7 classes

LANGUAGES

Indonesian

FEES 2022

Yr 5 \$8,444
Yr 12 \$8,444
Additional building levy

QCE SUBJECTS

25

VET

Yes

UNI OFFERS

Visit our website

CONNECT VIA



BUILDING RESILIENCE

The events of the last two years will forever be a milestone in the history of education. The traditional classroom has been opened up with on-line access to teaching and learning. Parent engagement in their child's learning has never been more critical. Education institutions, educators and learners have all had to pivot to on-line learning, and self-driven learning has become an important skill.

The world is rapidly changing, and this will inevitably have an impact on the employment landscape our graduates will transition into. New priority industries will emerge providing new job opportunities. As a committed and diverse teaching and learning faculty, we offer a liberating education that will foster the skills needed for this future. We will encourage our young men to be communicators, critical thinkers, creative and collaborative. To be successful in this new world, our young men will need workforce skills that are accompanied by a strong emphasis on the values of empathy, integrity, and inclusivity. We will foster these values by offering him a sense of justice and solidarity and encourage him to look beyond himself and consider how he can make a difference to those in his community and those on the margins of society. Good schools, now and in the future, will need to consistently review and renew their curriculum and pedagogical practices to ensure currency of skills and pathways to students. St Patrick's College is committed to providing our young men with a solid pathway to their future.





St Peter Claver College

Est. 1976

'Concern, Love, Justice'

KEY INFORMATION

Address 10 Old Ipswich Rd, Riverview QLD 4303
Telephone 07 3810 5900
Website spcc.qld.edu.au
Principal Terry Finan
Enquiries Marion Hunt
Email mhunt@bne.catholic.edu.au

WHAT MAKES US SPECIAL

St Peter Claver College is a Catholic Co-educational Secondary College offering high quality and affordable education for students in Years 7 – 12.

Students are offered a dynamic and inclusive curriculum executed by hard working, highly motivated and professional teaching staff. Our academic offering appeals to the full spectrum of learner types and places a high value on making quality education accessible to all families in the community.

We have opportunities for students to participate in accelerated learning in the core subjects of English, Mathematics and Science.

Whether the goal post-school is university, further vocational study or employment, we have a broad and rigorous suite of programs, Certificate courses, School-based Apprenticeship and Work Experience options available.

St Peter Claver College offers an impressive combination of academic, vocational, technological, cultural, artistic, sporting and leadership pathways designed to motivate and prepare students for future success.

We embrace and celebrate our diversity in many ways while drawing our Catholic understanding from our Marist, Mercy and Jesuit influences. It is this strong sense of community that ultimately sets Claver apart from other schools.

We place a strong emphasis on justice and service to the community, teaching our students values that last a lifetime, such as faith, kindness, honesty and compassion.

Our College motto 'Concern, Love and Justice' provides our students and community with guidance and values in which to strive to live their everyday lives by.

Whatever your future holds ... Know you can.

BUILDING RESILIENCE

St Peter Claver College has a long history of providing opportunities for our students to foster their strength, leadership, confidence and resilience. The College aims to create an environment where students are highly engaged, flexible and self-motivated learners.

Our approach to learning ensures students are equipped with the necessary skills to adapt to global challenges, such as the COVID-19 pandemic.

Our proven success with our excellent academic, spiritual and vocational education programs and robust co-curricular offerings means our graduates are resilient, confident and balanced young adults with the necessary skills to face the 21st century.



OUR FIRST PEOPLES

St Peter Claver College acknowledges the Jagera, Yuggera and Ugarapul People as the Traditional Owners of the land on which our College is placed.

We are inspired and nurtured by the wisdoms, spiritualities and experiences of our First Nations Peoples. Together we work actively for reconciliation, justice, equality and healing.

VISIT US IN 2022

Visit St Peter Claver College 24/7 with our Virtual Tour, via our website.

Alternatively, contact us to arrange a tour. Stayed tuned for more information about our 2022 College Open Day.

QUICK FACTS

- Four Senior Academic Pathways with proven track records of success
- Demonstrated growth in NAPLAN scores when comparing Year 7 with Year 9 results
- Beyond the Broncos Mentoring Program
- Annual College Musical/ Play
- Cultural Dance
- Sport – Rugby League, Netball, Futsal, Basketball, Softball, Touch Football
- Claver Dance Program
- Co-curricular Programs – Debating, eSports, Film Club, Drama Club
- Trade Training Centre
- Instrumental Music, Concert Band and College Choir

GENDER

Co-educational

YEAR RANGE

Yr 7 - 12

ENROLMENT

1,140 students

YEAR 7

200 students
7 classes

LANGUAGES

Japanese

FEES 2022

Yr 7-9 \$5,240
Yr 10-12 \$5,520 (plus Certificate costs)

QCE SUBJECTS

38

VET

Yes

UNI OFFERS

100%

CONNECT VIA





Stuartholme School

Est. 1920

'A School of the Sacred Heart'

KEY INFORMATION

Address 365 Birdwood Tce, Toowong
QLD 4066

Telephone 07 3369 5466

Website stuartholme.com

Principal Ms Kristen Sharpe

Enquiries Registrar

Email enrolments@stuartholme.com

WHAT MAKES US SPECIAL

As a progressive international Sacred Heart School, Stuartholme is committed to providing an education specifically tailored to the individual student's needs. The highly qualified teachers and specialist staff who are intellectual and highly relational, challenge their students to become independent, critical thinkers, arming them with the capabilities and confidence to actively engage in and own their learning.

In the classroom, students are engaged through dynamic teaching strategies and vibrant learning environments. Stuartholme acknowledges a commitment to inclusive education and best practice principles of teaching and learning with opportunities for students to strive for personal excellence. Educational support and extension are available through curriculum differentiation and special programs. In Year 12, students can expand their studies in Music extension and English extension, as well as University Studies in specific subject areas. Stuartholme is small enough for each student to be personally known so she won't be lost in the crowd, yet large enough to offer an extensive, ever evolving and dynamic range of opportunities. Away from the classroom, students can explore opportunities to enrich their schooling. Our range of co-curricular activities allows each girl to build her self-confidence and strengthen her talents and interests.

Stuartholme is only 6kms from Brisbane's CBD and provides the girls with a safe environment in a bush setting, where they can live and learn.



OUR FIRST PEOPLES

Stuartholme School acknowledges the traditional owners of the land on which Stuartholme is built, the First Nations people of the Greater Brisbane Region. As a Sacred Heart community, we unite in the spirit of Cor Unum, One Heart, and together we celebrate and reflect on the stories of our First Nations people to deepen our understanding of our Australian identity.

VISIT US IN 2022

Experience our Stuartholme School community and learn how we educate and empower our young women at our Open Day on Saturday 12 March 10am-1pm. Stuartholme also offers regular smaller tours, details at www.stuartholme.com

QUICK FACTS

- Small school that provides big opportunities
- Recognised Wellbeing Program integrating spirituality, wellness and academics
- Enrichment opportunities outside of the classroom
- Kind, inclusive and highly relational Catholic expression
- Brisbane's only Catholic girls boarding school
- Comprehensive co-curricular program
- SPARK – enrichment program for high potential learners
- Part of the Sacred Heart international network of over 150 sister schools in 41 countries
- Engaged Social Justice and Entrepreneurial Program
- Targeted Careers pathway program with a full time Careers Counsellor

GENDER

Girls

YEAR RANGE

Yr 7 - 12

ENROLMENT

700 students

YEAR 7

110 students
4 classes

LANGUAGES

French & Chinese

FEES 2022

Please visit school website for details

QCE SUBJECTS

34

VET

Yes

UNI OFFERS

100%

CONNECT VIA



BUILDING RESILIENCE

At the heart of Stuartholme are our students, who are challenged in a supportive and affirming environment to reach their potential in all areas of development – spiritual, intellectual, social, emotional, and physical. Well established in our community is how we optimise success for our students through a three-way partnership whereby staff and the parents and students unite to build resilience and deliver outstanding results.

Stuartholme builds the resilience and academic capabilities of our students through our school action plan – Growing to Great, which centres on three key strategic pillars to build staff, student and parent capacity. Industry and international experts in education and wellbeing provide workshops to parents which allows them to support the work the school does in the home environment. Teacher capacity is enhanced through professional learning opportunities which supports student growth. Finally, students are activated to be owners and drivers of their own learning and wellbeing. The school's wellbeing program, which has been shortlisted for a National Educators Award, is timetabled as part of the curriculum and supported by immersion initiatives including camps, retreats, leadership development workshops and staff and parent development and engagement.

Integrating learning, spirituality and wellbeing in innovative ways builds self-knowledge and resilience for every student.



Building Resilience Using Technology – Channelling our students’ newly developed digital communication skills

By Lindsey Davis,
Integrate AV

Technology use in the classroom had been rapidly increasing well before the COVID-19 global pandemic. Schools were adopting interactive flat panels and portable devices, such as tablets or laptops, in a variety of ways and encouraging their use at home for homework and digital organisation, such as emails, calendars or digital learning management systems.



After two years of relying on technology use at home from a vast range of devices, all needing to be used independently by our youngest students through to our final year secondary and Higher Education students, it is safe to say we have built levels of resilience in using technology we never needed before.

Students, families and teachers became experts in basic troubleshooting of their internet connections, device operation and software use, out of sheer necessity.

"Miss, I can't find the email."

"Check your junk folder or recently deleted folder."

"Found it!"

"Mum, the internet's not working."

"Have you checked the Ethernet cable is properly plugged into the wall and the laptop?"

"Oh yeh!" [click] "It works now!"

"Dad, Zoom's not opening."

"Have you clicked on the little pop up blocked icon?"

"It's ok, it's good now."

And so on.

This resilience and determination to continue with quality teaching and learning regardless should not only be celebrated, but maintained in the classroom and at home, wherever possible. These digital communication skills are what teachers are hoping to achieve with their students through cross curricular capabilities and learning outcomes in key subject areas.

As a High School Technology and Mathematics teacher with four years in the Education and Corporate Technology Industry, I deeply value digital

communication skills. My team needed to deliver the highest quality online professional development to our teachers and schools, and my students needed to learn digital communication, organisation and independent learning skills. The levels of capability my students achieved during their lockdown home learning periods was incredible and I aim to nurture those skills and value them in my classroom teaching as much as possible.

As a Training and Professional Development Specialist with Integrate AV, I work with a fabulous team of technology integration specialists, whose knowledge and skill sets support schools and teachers, in addition to corporate and government organisations, with a range of technology solutions and support services to meet their individual needs.

To support building and maintaining student and teacher levels of resilience, we need to keep channelling their digital communication skills. Here are some suggestions to do exactly that:

- Provide students work via email or your learning management system, which they have to access on a digital device themselves, so they maintain the ability to locate files in a digital space independently.
- Encourage students to take photographs of work using portable devices and upload those photos to your school's LMS or cloud storage so they can access them from home or at school on another device. This is excellent practice for creating digital portfolios of the work they are proud of.
- Create calendar invites and attach classwork to the invite. Encourage students to respond to the calendar invite and download the attachment to access their work.
- Enlist some students as "Tech Support" each lesson or day. These students can support other students in accessing lesson content, connecting to devices and managing the interactive whiteboard content delivery.

- Many organisations developed virtual excursion programs during lockdown, most of which are still available. Book a live virtual excursion through DART Connections <https://dartlearning.org.au/> or liaise directly with organisations and allow students to manage the video conference connection and etiquette during the session.
- Have a day or lesson without any current technology. If your school still has any overhead projectors, see if you can borrow one and teach the way classes were taught 20 years ago. Discuss the skill differences required in using technology in the classroom today and how beneficial it might be for modern living, study and employment.

These are just a few suggestions of ways to continue to develop students' resilience using technology in the classroom and building on their developed skills from their time during home learning.

For more support and guidance on classroom or school technologies or integrated solutions in general, contact the team at Integrate AV on 1800 742 748 and they can provide you with tailored solutions for your needs and to meet your budget.

Lindsey Davis is a Technology Integration Specialist and Technology Teacher at a Sydney High School. She has been in the Education industry for 20 years, including working in the education technology industry delivering and managing teacher professional development. She began her teaching career with Teach First in the UK and moved to Australia 6 years ago. Working with Integrate AV as a Training and Professional Development Specialist, she is keen to support her fellow teachers with their use of technology in the classroom for developing a wide range of skills in our students of all ages.

BenQ

INTERACTIVE PANELS

65"

75"

86"

4K
ULTRA HD



LEARNING SPACES
TRAINING ROOMS
CLASSROOMS
HUDDLE SPACES
MEETING ROOMS
BOARD ROOMS



SLEEK DESIGN . COLLABORATIVE WHITEBOARDING
EZWRITE SOFTWARE . DEVICE COMPATIBILITY
MULTI-USER COLLABORATION . WIFI CAPABILITY



Wireless
presentation



Screen
sharing



Airplay,
Google Cast,
MirrorOp



4-way
split screen



Wireless
Touchback
(Windows only)



Easy
upgrade

INTEGRATE AV

Unified Communications & Collaboration Technologies



1800 742 748

info@integrateav.com.au

235+
Primary and Secondary schools
are now using Enquiry Tracker

A game changer for schools

Enquiry to Enrolment... solved.



The adventure begins



EnquiryTracker®
enquirytracker.net