

# CATHOLIC SCHOOLS GUIDE 2022

SYDNEY  
SECONDARY  
SCHOOLS  
EDITION

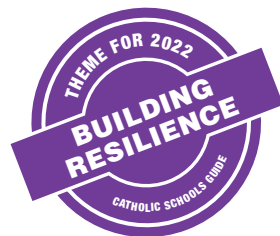
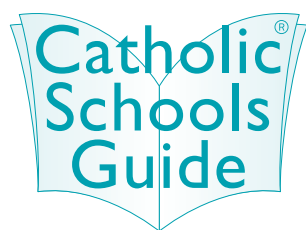
BUILDING RESILIENCE





# Contents

Feature Editorials	Index	Locations
9	12	13
College Presentations	Integrate AV Competition	College Presentations
14	20	22



Catholic Schools Guide is an independent publication published by Catholic Schools Guide Pty Ltd. The contents of Catholic Schools Guide are copyright and may not be reproduced in any form, either whole or in part, without written permission from the publisher. The content of this publication should be used as a guide; further enquiries or questions regarding school information must be taken up with the relevant Colleges.

While every effort has been made to ensure that the information provided in this publication is accurate, the publisher of this Guide is not responsible and will not be held liable for any errors or omissions. The publisher accepts no responsibility for the information supplied or changes subsequent to the date of publication. Further, the publisher will not be held liable for the misuse of any information gained from this Guide.

This document has been produced to international environmental management standard ISO14001. Designed and Printed by Ellikon Fine Printers, Melbourne [www.ellikon.com.au](http://www.ellikon.com.au).

Catholic Schools Guide is distributed by CouriersPlease, a leading courier and freight service that delivers tens of millions of parcels each year.



## Catholic Schools Guide

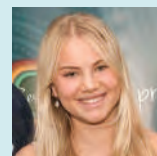
Greg Campitelli  
Publishing Editor

Welcome to Catholic Schools Guide, 2022 edition. Each year, our Guide carries a different theme and this year it is **'Building Resilience'**.

In Australia, there is no greater group that has shown resilience over a longer time than Australia's First People.

The core value of our Guide rests in the continuous quest for change to search for greater equality and celebration of Australia's First People. Our design team has now permanently incorporated motifs that pay homage to our extraordinary beautiful Indigenous cultural art. This is thanks to the work of a young Wiradjuri Woman, Lua Pellegrini, who works closely with Koji, our production designer at Ellikon, to produce the stunning work you see.

### Artist in Residence – Introducing Lua Pellegrini



"I am a young Wiradjuri Woman who grew up on Darug Country in Western Sydney. I am currently studying at the University of NSW completing a Bachelor of Fine Arts/ Arts Majoring in Indigenous Studies. For most of my life I have had a love for visual arts, however, my passion for Aboriginal Art only began after spending time with my local community elders Uncle Greg Simms and Uncle Wes Marne during high school.

In 2019, I graduated from Loreto Normanhurst with my HSC major work, 'Our Past, Her Future', being featured on the cover of the 2020 Catholic Schools Guide and later showcased at the Grace Cossington Smith Gallery. That same year, I was humbled to be asked to exhibit my work on the Reconciliation Wall at NSW Parliament House beginning my exhibition Our Past, Our Future in NAIDOC Week 2020 and continuing to have it exhibited till March of 2021.

I am extremely passionate about Indigenous education and have been a student volunteer at Redfern Jarjum College since 2016. I was also honoured to receive the NESA Chairperson Award for the Highest performing Aboriginal Student in HSC Aboriginal Studies for 2019. Since then, I have continued to aim to have a positive impact on the lives of other Indigenous youth through my work as a member of the NSW Health Literacy Advisory Council and as the Chairperson of the NSW Youth Advisory Council and am excited to continue my passion for Indigenous art and education through my new role as the Catholic Schools Guide Artist in Residence."

### WIN an AMAZING PRIZE worth over \$9500! – The Great Lego Tower

IntegrateAV is proud to be our major sponsor of this year's competition with an incredible prize on offer. Every Catholic school in Australia is invited to enter this competition to win an All New CommBox Classic Interactive Touch Screen.

It's easy. We all love LEGO – so, build the tallest tower you can make using one single brick on top of the other. Then, register your school via the Catholic Schools Guide website.

### Feature Writers

If there is one true learning the global pandemic has taught us is about the importance of being resilient. Huge thanks to our feature writers Ashley de Silva, CEO of mental health service ReachOut; Alisha Min at The Resilience Project; the team at Be You; experienced classroom teacher Donna Smith; and Integrate AV's Lindsey Davis: their features are thought-provoking reading.

### Online Platforms

Need more information? Check out our brand new website at [catholicschoolsguide.com.au](http://catholicschoolsguide.com.au) where you will find videos posted from each school, Open Day listings, great articles on education and much more. Please join our growing community at [facebook.com/CatholicSchoolGuide](https://facebook.com/CatholicSchoolGuide) where you will find terrific tips and news feeds.

### Facts About the Guide

The Colleges choose to advertise in the Guide, but of course there is no compulsion to do so. Importantly, the Guide is distributed free to families via the Primary School network. It is also available at most parishes and many childcare centres. The Guide is put together by a dedicated team. I am especially grateful to our sub-editor, Master of Applied Linguistics, Stephen Campitelli; senior production manager, Kristy Nimmo; and the design team at Ellikon – Phil and Koji – we simply could not put this magazine to press without their professionalism.

### University Destination Data

On each school's page you will find 'Uni Offers' this refers to the % of Year 12 first round university offers for the Class of 2020.

### Caritas Australia

Catholic Schools Guide is proud to be supporting the work of Caritas Australia. All support is provided pro bono and our Guide encourages all readers to get their school involved in supporting the extraordinary work of this agency.

### Dedication

This edition is dedicated to us – the survivors of the pandemic.

**SchoolHouse Australia**  
is an education recruitment and consulting  
company providing services to assist schools  
throughout Australia

- **CONTRACT AND PERMANENT**  
RECRUITMENT CONSULTING SERVICES

- **INNOVATIVE TOOLS**  
FOR SELF-MANAGED RECRUITMENT

# School House



## WE **VALUE** SCHOOL RELATIONSHIPS

Our staff bring over **50 years of collective experience**  
recruiting for Australian Catholic schools.

**Trusting relationships** have taught us to ensure all  
our services attract and select quality teachers  
who fit a school's ethos and culture.



## WE **KNOW** TEACHERS

We also understand that **flexible, cost effective services** are  
what schools require. You can choose to enlist our recruiters  
to provide support and/or embed our digital tools into  
your self-managed recruitment.

Benefit from **SchoolHouse's** ongoing national and international  
SchoolHouse marketing, and ensure your recruitment campaigns  
reach the widest audience of suitable teachers



visit [www.the-schoolhouse.com.au](http://www.the-schoolhouse.com.au)



# commBOX CLASSIC INTERACTIVE PANEL

DURABLE AND COMMERCIAL-GRADE



DIGITAL WHITEBOARD . WEB BROWSER . CLICKVIEW  
COMMBX APP STORE . COMMBX WIFI CONNECT  
VIVI BUILT-IN (SUBSCRIPTION FEES APPLY)  
SMART SWITCHING FOR GUEST CONNECTIVITY  
DIGITAL SIGNAGE . COMMBX EDUCATION APPS

Google

Microsoft

canvas

Blackboard

## USE TEACHING APPLICATIONS YOU ALREADY KNOW AND LOVE

Make teaching easy by allowing teacher and schools to teach with the applications they already know and love. Schools and teachers are already investing heavily into the best of breed software offered by Google Education and Microsoft Education. CommBox even integrates with Microsoft Ink, saving teachers time when using apps such as OneNote, Word etc.

**commBOX**  
CLASSIC INTERACTIVE PANEL







## POWERFUL, EASY-TO-USE TOOLS FOR TEACHERS



## TWO WAY MIRRORING AND TOUCHBACK WITH AIRSERVER

Teach or present from anywhere in the room. Share content and provide instant feedback from laptops, smartphones and tablets without the need for apps or software.

 **AirServer**

**4K**  
ULTRA HD

55" 65" 75" 86" 98"

**1800 742 748** [info@integrateav.com.au](mailto:info@integrateav.com.au)

# Tackling cyber education differently

Get on board with Australia's favourite cyber education solution for your upper primary children!

**DiGii**  
SOCIAL

## What is DiGii Social?

*A content-rich, AI powered platform that provides children with live feedback and educates on every keystroke.*



For teachers it couldn't be simpler. Students play and interact on their secure platform, teachers have full visibility of all interactions on the educator platform, and artificial intelligence steps in whenever necessary to guide children towards making better and safer choices online. Not only do we educate children, but we also educate parents with their own library of learning.

- ✓ Curriculum and protective behaviours aligned
- ✓ Evidence-based
- ✓ Easily implemented
- ✓ Creates positive behaviour change

*"DiGii Social provides an authentic and meaningful experience for our Years 5 and 6 students to learn the skills of digital citizenship in a safe and supported manner"*

*Katie, Head of Junior School, Perth College*



Contact us today to organise an obligation-free demonstration:

✉ [hello@digiionline.com](mailto:hello@digiionline.com)

🌐 [visit digiisocial.com](http://visit.digiisocial.com)

**14 Day  
FREE  
TRIAL**



Scan Here to Learn More

**ASUS | BUSINESS**  
Education

## WHY ASUS FOR EDUCATION?

ASUS is dedicated to solving the unique challenges facing today's students and educators. We are here to help cultivate the minds of the next generation with a comprehensive, student-centered product portfolio that includes Chromebooks, Windows-based laptops, desktops, AIO PCs and software to enable progressive and innovative learning in an ever-changing world.



Durability & Reliability



Security



Mobility



Innovation



IT Management

## ASUS PREMIUM CARE SERVICES

We go beyond standard warranty, to provide the assurance of maximum protection with minimal effort. It's the peace of mind you need so that you can get things done without compromising productivity or mobility.



MINIMISED  
DOWNTIME



INCREASED  
EFFICIENCY



REDUCED  
COSTS



### Comprehensive Support

Nobody knows your laptop better than our own ASUS hardware experts do. That is why they are only a phone call away to help you get the best out of your laptop and assist you.

### Warranty Extensions

Keep that peace of mind feeling going for up to 5 years, with an ASUS extended warranty. Ideal if you are planning to deploy your laptop for a longer period.

To learn more about ASUS in Education, visit [Business - Best-for-Education \(asus.com\)](https://business-best-for-education.asus.com)

For more information about ASUS in Education, reach out to us:

**Tony Hospes**  
Commercial Business Manager  
NSW/ACT  
0412 660 064  
[Tony\\_Hospes@asus.com](mailto:Tony_Hospes@asus.com)

**Domenic Torre**  
Commercial Business Manager  
VIC/TAS  
0412 660 064  
[Domenico\\_Torre@asus.com](mailto:Domenico_Torre@asus.com)

**Vanessa Casado**  
Commercial Business Manager  
NSW/ACT  
0412 660 064  
[Vanessa\\_Casado@asus.com](mailto:Vanessa_Casado@asus.com)

**Jim Lee**  
Commercial Business Manager  
WA/SA/NT  
0418 261 175  
[Jim\\_Lee@asus.com](mailto:Jim_Lee@asus.com)

**Leon Brumen**  
Head of Commercial Team  
National  
0414 909 608  
[Leon1\\_Brumen@asus.com](mailto:Leon1_Brumen@asus.com)

[asus.com.au](https://asus.com.au)

FOLLOW US ON    



Creating spaces for  
children to play,  
learn and grow.



DESIGN | PLAYSCAPES | SURFACING | SYNTHETIC GRASS

Delivering award-winning playscapes and outdoor learning spaces to the education sector for over 10 years, Ausplay Playscapes is committed to creating long-lasting, outdoor spaces for children to play, learn and grow.

#### Australian Made

With in-house fabrication and a full design and construct service, we collaborate with clients to create one-of-a-kind, iconic playscapes and structures.

#### Site Specific Design

Each project is tailored to work sensitively with the existing environment.

#### Full service

From initial design through to installation, surfacing and shade, our highly qualified and experienced team of designers, fabricators and installers ensure that every project is compliant with Australian Standards and delivered to an outstanding quality.

We cannot wait to work with you on your next project.  
Get in touch and let us bring your ideas to life!





# Australian CATHOLICS

Bring faith to life in your school community



Discover what an AC+ subscription can offer your school



- Education Hub access for staff, students and parents
- Archive of 1000+ articles searchable by curriculum topic, age group, common theme and resource type. Classroom activities, prayers and liturgy ideas.
- Quarterly magazine to give to parents and staff
- License to use content and resources in RE and faith formation
- Teacher's Forum – share resources, ideas and experiences
- Access to exclusive webinars
- Faith-focused articles for your school newsletter
- AC+ subscriber e-newsletter
- Inclusion in the School Open Day Calendar
- Opportunities for your students to have a voice

More than  
**1 in 3**  
Catholic  
schools has a  
subscription

TO SUBSCRIBE

(and for schools to see the special bulk rates) GO TO:

**[www.australiancatholics.com.au](http://www.australiancatholics.com.au)**

Connect with us @AUSCATHS

**Danihers**  
facility  
management



**OUTSOURCING YOUR FACILITY MANAGEMENT  
WILL OFFER YOU GREATER FLEXIBILITY,  
ACCESS TO BEST PRACTICES, IMPROVED QUALITY  
AND IT WILL ALSO REDUCE YOUR COSTS**

#### Facility Management specialist in:

- Grounds & Sporting Oval Management
- Garden Design & Daily Maintenance
- Property Maintenance
- Cleaning Services
- Security Services
- Sustainability Management
- HR & Transitional Management
- Essential Services Management
- Auditing, Property Compliance & Risk Management
- Project Management

"Communication is a key to a successful professional relationship and this is evident between our College and the staff of Danihers. Of course we demand high cleaning standards in such a large, diverse and complex site and Danihers have never let us down in this important and fundamental regard"

**Brian Hanley**  
Principal, St Monica's College, Epping

"We approached Danihers because the complexity of managing and supporting cleaning staff who were so frequently working outside of school hours was becoming exceedingly challenging and time-consuming. From the initial conversations through to our current arrangements, the team at Danihers have been professional and most importantly, they were quick to align with our College's values and priorities. Their proactive care for our learning spaces, staff areas and boarding community has been greatly appreciated, and their efforts to ensure that our existing staff were grandfathered into the new arrangement gave us great peace of mind. The staff who now work on our site feel like part of our community. We have great lines of communication, and they participate in the daily life of the school as if we are all one organisation"

**Kate Fogarty**  
Principal, Assumption College

1300 559 409 [www.daniers.com.au](http://www.daniers.com.au)





# Three flexible, cost-effective keying solutions

Changing organisational structures, the increased use of contractors, temporary and mobile workers are putting enormous pressure on those responsible for the security in a building or on a site. Designed with this in mind, ASSA ABLOY Opening Solutions offers three keying platforms based on your business needs; a mechanical, an electromechanical and a purely electronic.

Please contact ASSA ABLOY Opening Solutions to find out more about **PROTEC<sup>2</sup>**, **PROTEC<sup>2</sup> CLIQ** and **eCLIQ** via the QR code below.



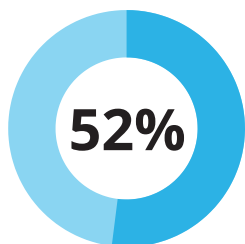
SCAN HERE to register your interest  
or for more information visit:  
[assaabloyopeningsolutions.com.au](https://assaabloyopeningsolutions.com.au)



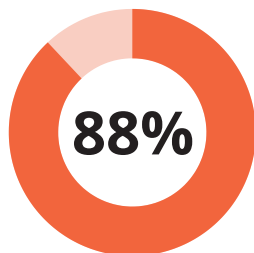
Experience a safer  
and more open world

**ASSA ABLOY**  
Opening Solutions

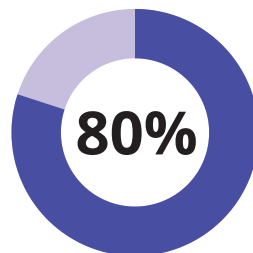
## IS YOUR SCHOOL TAKING RISKS WITH EXCURSION RISK?



of schools rate their excursion risk assessments as **fair, poor or very poor**.



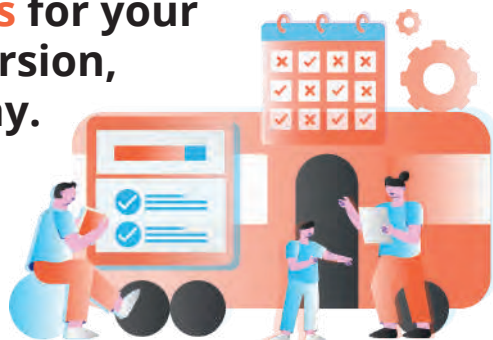
of schools **do not train their teachers** on excursion risk management.



of excursions **require multiple amendments** to risk assessments prior to approval.

WITH SAFEEXCURSIONS, OVER **70%** OF EXCURSION RISK ASSESSMENTS ARE **COMPLETED WITHIN A DAY**.

To learn more about **Better Risk Assessments** for your next school excursion, get in touch today.



[www.complispace.com.au/safe-excursions](http://www.complispace.com.au/safe-excursions)



## PRINTED SCHOOL MARQUEES AND FLAGS FOR ALL HOUSES AND SPORTS

At Mountain Shade we pride ourselves on quality.

We believe everyone should have the ability to protect themselves from the elements and show off while doing so. Our Marquees come in an array of sizes to meet your needs. Mountain Shade products are Australian Standard Approved, meeting your Duty of Care and putting your mind at ease.

We deliver nation wide, so call us to enquire!

[sales@mountainshade.com.au](mailto:sales@mountainshade.com.au) | 88 Latitude Blvd, Thomastown, VIC 3074





# Building Resilience

By Ashley de Silva,  
CEO of ReachOut

Setbacks, problems and failures are an inevitable part of life. Since 2020, COVID-19 has had a huge impact on the lives of students, parents and teachers across Australia. We have had to adapt to all the changes to our normal routines and activities and learn to cope with things like online learning, study stress and uncertainty about the future.



ReachOut is a mental health service that's been providing support for young people, their parents and schools for more than 20 years. During this time we've heard from countless young people, parents, teachers, school staff and mental health professionals about what helps them to stay happy and well. A key theme we've heard again and again is the importance of *resilience* – a theme that's backed up by science.

The term 'resilience' actually comes from materials in science and engineering. It relates to how much pressure and stress different materials can withstand before being compromised in some way. When we use the term 'resilience' at ReachOut, we're talking about the ability of people and communities to adapt and keep going when faced with adversity. Resilience helps us not only to recover from stress, but to excel in life – be that in the classroom, in the staff room or at home.

An example that's commonly used to illustrate resilience is a rubber band, which can be put under stress by being stretched and pulled in all directions, without breaking, then reverts to its original shape as soon as the pressure or stress is removed.

Individuals who are resilient share certain traits. These include emotional awareness, the ability to regulate their emotions, to maintain an optimistic outlook, to be flexible in their thinking and to display empathy towards others. They also believe that they can achieve things and are willing to seek help when needed.

Significantly, all of these traits can be learnt not just by students, but also by teachers, parents and others in the school community. Resilience is something we can *all* continue to build and cultivate throughout our lives.

Having a resilient school community helps reduce the impact that negative situations can have on individuals and those around them. We know this may feel like a challenging goal, though, and it's not always clear how we can achieve it in practice.

Two practical approaches that teachers, parents and young people can use to develop resilience are *encouraging help seeking and sharing stories*.

A vital part of building resilience is learning to recognise when we need additional support and then seeking help. We all need help at times. Resilient people know when to ask for help and will reach out to others when they're going through a tough time.

Making sure that school staff, parents, teachers and young people know where to seek help when it comes to their mental health is key. This could be having posters up at school about mental health support services, providing information about mental health support in school newsletters or having regular conversations about support services.

Critically, there is no one-size-fits-all solution when it comes to mental health support. It's helpful to offer different options, including connecting with a professional in person, calling a helpline, talking to someone you trust, or engaging with an online service such as ReachOut.

Another effective way to build resilience across the school community is to find ways, both formally and informally, to share people's stories of experiencing and overcoming knockbacks and failures. This can include giving students a platform to share their stories with each other, but also encouraging them to hear their parents' and teachers' stories, too.

These practical examples are thought starters for ways in which your school community can encourage and promote resilience to ensure that everyone can benefit from this vital mental health tool.

For more information and support, visit: [ReachOut.com \(youth\)](https://reachout.com.au/youth), [ReachOut.com/Parents](https://reachout.com.au/parents) and [ReachOut.com/Schools](https://reachout.com.au/schools).

If you need further support when it comes to your mental health, you can call LifeLine on 13 11 14 or Kids Helpline on 1800 55 1800, contact your GP, or call 000 in an emergency. At [ReachOut.com](https://reachout.com.au) you can find articles, tips, online communities and pathways to further support.

# The key protective factor against stress: Four Fundamental Pillars of Resilience

By Donna Smith

Teacher attrition has long been a major concern not only for Australia but also other economically developed countries. In fact, in Australia, almost half of the beginning teachers employed resign after just five years of practice (Hong, 2012). This is problematic as it has compounding effects. Firstly, the psychological pain and suffering endured by the individual teacher (Dorman, 2013) can compromise their mental health; secondly, there is a negative impact on student learning outcomes (Arnup & Bowles, 2016); and lastly, the loss of highly trained professionals creates significant challenges in recruitment and replacement (Howard & Johnson, 2004).



In Australia, there are almost 270,000 teachers and 4 million students in 9,500 schools (ABS, 2021). This is almost 1 in 6 people with a direct interest in Australian school life. Education is everybody's business and is too large to be ignored or not considered. It is, therefore, vital we preserve and get better at retaining teachers as they have a far-reaching influence on shaping our nation (Heffernan, 2019) and are drivers for student success (Hattie, 2009).

The high attrition rate among beginning teachers is not only important in terms of addressing a shortage of teachers (Kim, 2019), there is a real drive to create more sustainable practices so teachers can operate from a positive mindset. Mental wellbeing of teachers is at the forefront of teacher attrition with research making it apparent that teacher resilience and burnout contribute to teachers leaving the profession.

Because burnout is caused by prolonged periods of stress it is then only natural that steps are taken in managing stress to keep it at a sustainable level. Susan Bruce, associate professor at Northeast Ohio Medical University, says that it is better and easier to prevent burnout than to cure or resolve it. A key to this lies in resilience building. According to Susan Beltman, Associate Professor for the School of Education at Curtin University, resilience defines an individual's capacity to continue, adapt and thrive despite experiencing adversities, such as unexpected changes, critical life events and job stress. Importantly, rigorous evidence-based research (Hong, 2012; Beltman et al., 2011; Arnup & Bowles, 2016; Howard & Johnson, 2012) has outlined four elements underpinning resilience known as the 'four fundamental pillars': Confidence, de-personalisation from unpleasant events, pride and ownership over accomplishment, and strong connections with others.

**Confidence:** Belief in one's abilities is the cornerstone of resilience. Research demonstrates that confident educators are less likely to manifest burnout curbing their intention to leave the classroom (Hong, 2012; Howard & Johnson, 2012). Furthermore, being confident and having a strong self-belief in one's abilities not only builds resilience it generates fulfilment, motivation and a sense of joy.

**De-personalisation:** At times, teachers may feel responsible for events that are out of their control. Resilient individuals understand the importance of creating strong and healthy personal and professional boundaries enabling them to de-personalise from adversity and unpleasant events and this most certainly enhances teacher resilience (Howard & Johnson, 2012).

**Pride and ownership:** We need to celebrate our wins. It is easy to fall into the trap of playing off small accomplishments and not recognising the efforts put forth in achieving such wins. Resilient people are proud, celebrate their accomplishments and take ownership of all goals achieved, no matter how trivial, which fosters high resilience.

**Strong connections:** Resilience thrives on healthy and strong networks. These networks need to be fostered in professional and personal life. Healthy relationships with family and friends can influence an individual's professional career. Therefore, a 360-degree approach to healthy relationships is paramount to building and maintaining resilience (Bruce, 2009).

It's important to know that resilience is not static, it can wax and wane depending on the circumstances. To build and maintain resilience through adverse times individuals need to be kind to themselves, practice, and persevere. Resilience can grow over time and it is now,

especially during these uncertain times, we need to strengthen our resilience more than ever. The four fundamental pillars offer a great starting point to build resilience not only to survive through adversity but to thrive.

## References

- Australian Bureau of Statistics [ABS]. (2021). *Schools Australia*. <https://www.abs.gov.au>
- Beltman, S., Mansfield, C., & Price, A. (2011). Thriving not just surviving: A review of research on teacher resilience. *Educational research review*, 6(3), 185-207.
- Bruce, S. (2009). Recognizing stress and avoiding burnout. *Science direct*, 1(1), 57-64.
- Hattie, J. (2009). *Visible learning: A synthesis of 800+ meta-analyses on achievement*. Routledge.
- Heffernan, A., Longmuir, F., Bright, D., & Kim, M. (2019). *Perceptions of teachers and teaching in Australia*. Monash University.
- Hong, J. (2012). Why do some beginning teachers leave the school, and others stay? Understanding teacher resilience through psychological lenses. *Teachers and teaching*, 18(4), 417-440.
- Howard, S., & Johnson, B. (2004). Resilient teachers: resisting stress and burnout. *Social Psychology of education*, 7, 399-420.
- Kim, L. E., Jörg, V., & Klassen, R. M. (2019). A meta-analysis of the effects of teacher personality on teacher effectiveness and burnout. *Education psychology Review*, 31, 163-195.
- Mansfield, C., Beltman, S., Price, A., & McConney, A. (2012). "Don't sweat the small stuff." Understanding teacher resilience at the chalkface. *Teaching and Teacher Education*, 28(3), 357-367.



## Resilience: A whole-of-school tonic for tough times

By Alisha Min,  
The Resilience Project

In today's times of constant change and uncertainty, school communities have been hard hit. Schools have been forced to quickly pivot with loungerooms replacing classrooms and staffrooms, and parents juggling working from home while helping children adjust to virtual lessons.



Children of all ages have had face-to-face connections replaced with screen time. They're missing the social and emotional development which comes from connecting with their peers through school excursions, sports, arts and cultural activities, plus celebrating graduation and birthday milestones with their peers.

Building resilience in students, teachers and families has never been more vital.

At The Resilience Project, we see resilience as the ability to better bounce back from challenging or stressful times. To help people build resilience, we deliver emotionally engaging programs which step-through a range of evidence-based, practical wellbeing strategies. When practised, the research tells us these strategies elicit positive emotions, and this in turn leads us to happier and more resilient lives.

The statistics around mental health in Australia, particularly surrounding our children, are startling. They tell us that one in four adolescents will experience mental health problems this year, and of these children, nearly two thirds of them will not seek help. Additionally, recent surveys conducted by youth mental health foundation, Headspace, revealed 75% of young people said their mental health has deteriorated due to Covid-19 upheavals, with incidences of self-harm and anorexia particularly rising.

With these confronting figures in mind, it is clear that primary and secondary schools play an integral role in improving the mental health of our country's youth. The Royal Commission into Victoria's Mental Health System in 2021 revealed that primary and secondary schools are settings with the highest unmet need of mental health support.

Programs in schools with a focus on developing positive emotions are a crucial step in the right direction.

Delivering positive strategies in schools is at the heart of what we do at The Resilience Project, and so far, we have delivered wellbeing programs to over 1,500 schools and early learning centres.

Our Education Programs support mental health in the classroom, staffroom and family home through presentations, student curriculum, teacher and parent resources and digital content. Research shows that the more positive emotion you experience, the more resilient you will be. For that reason, our Education Programs focus on key pillars that have been proven to cultivate positive emotion as building blocks to resilience:

- **Gratitude:** Paying attention to the things we have right now, and not worrying about what we don't have. We practise gratitude by focusing on the positives.
- **Empathy:** Putting ourselves in the shoes of others so we feel what they feel. We practise empathy by being kind and compassionate to other people.
- **Mindfulness:** Our ability to be calm and present in the moment. We practise mindfulness by slowing down and concentrating on one thing at a time.
- **Emotional Literacy:** Our ability to label our emotions, which helps us to soften negative emotions and find positive ones. We practise emotional literacy by labelling our emotions as we experience them.

As an organisation, we are driven by our desire to make a difference to young people's emotional wellbeing. Just like adults in workplaces, school curriculums and cultures have a big influence on young people

and their overall wellbeing. To make sure our programs are hitting the mark, we underwent an independent research evaluation with The University of Melbourne to measure the impact of our schools partnership program. Recent results show promising evidence of improvements in the participating students' self-esteem and confidence, their relationships at school and home, their ability to express emotions and use daily gratitude strategies, and the creation of supportive classroom environments.

Schools are also telling us that these programs are making a positive difference.

*"As a small school, we are so very grateful to be able to participate in the Digital Program. Our students love everything about the program, and it has provided staff with a new language for supporting students and their families".*

*Liz Trewick, Principal, Our Lady of Sacred Heart. (Elmore, Victoria)*

We are delighted that Catholic schools already make up over 20% of the 378 schools participating in our extensive Partnerships School across Australia.

The Resilience Project delivers emotionally engaging programs and provide evidence-based, practical wellbeing strategies to build resilience. For more information about The Resilience Project go to: [theresilienceproject.com.au](https://theresilienceproject.com.au)

# Index

A list of Catholic Secondary Colleges featured in the 2022 Guide.



## **Bede Polding College**

22-30 Rifle Range Road, South Windsor NSW 2756



## **Bethlehem College**

18 Bland Street, Ashfield NSW 2131



## **Casimir Catholic College**

200 Livingstone Road, Marrickville NSW 2204



## **Catherine McAuley Westmead**

2 Darcy Road, Westmead NSW 2145



## **Kincoppal Rose-Bay**

New South Head Road, Rose Bay NSW 2029



## **Loreto Kirribilli**

85 Carabella Street, Kirribilli NSW 2061



## **Loreto Normanhurst**

91-93 Pennant Hills Road, Normanhurst NSW 2076



## **MacKillop Catholic College**

91 Sparks Road, Warnervale NSW 2259



## **Monte Sant' Angelo Mercy College**

128 Miller Street, North Sydney NSW 2060



## **Mount St Benedict College**

449C Pennant Hills Road, Pennant Hills NSW 2120



## **Oakhill College**

423-513 Old Northern Road, Castle Hill NSW 2154



## **Our Lady of Mercy Catholic College Burraneer**

62-66 Dominic Street, Cronulla NSW 2230



## **OLMC Parramatta**

Victoria Road, Parramatta NSW 2150



## **Our Lady of the Sacred Heart College Kensington**

36 Addison Street, Kensington NSW 2033



## **Patrician Brothers' College Blacktown**

100 Flushcombe Road, Blacktown NSW 2148



## **Santa Sabina College**

Year 5 to Year 12

90 The Boulevarde, Strathfield NSW 2135

Prep to Year 4

59 The Boulevarde, Strathfield NSW 2135



## **Southern Cross Catholic College**

17 Comer Street, Burwood NSW 2134



## **St Andrews College**

Yr 7 - 10 Campus

116 Quakers Road, Marayong NSW 2148

Yr 11 - 12 Campus

50 Breakfast Road, Marayong NSW 2148



## **St Patrick's College Strathfield**

2 Edgar Street, Strathfield NSW 2135



## **St Patrick's Marist College**

151 Kirby Street, Dundas NSW 2117



## **St Paul's Catholic College Greystanes**

198 Old Prospect Road, Greystanes NSW 2145



## **St Scholastica's College**

4 Avenue Road, Glebe NSW 2037



## **St Vincent's College**

Rockwall Crescent, Potts Point NSW 2011



## **Stella Maris College**

Main Campus

52 Eurobin Avenue, Manly, NSW 2095

Senior Campus

270-278 Pittwater Road, Manly NSW 2095





# Locations

Locations of Catholic Secondary Colleges featured in the 2022 Guide. Multiple crests represent multiple College campuses.



To Burraneer



© Sydney Publishing.  
Reproduced from Sydney  
with permission.





# Bede Polding College

Est. 1986

*'Called to Bring Peace'*

## KEY INFORMATION

**Address** 22-30 Rifle Range Road, South Windsor NSW 2756  
**Telephone** 02 4560 2900  
**Website** [www.bedepoldingwindsor.catholic.edu.au](http://www.bedepoldingwindsor.catholic.edu.au)  
**Principal** Mr Mark Compton  
**Enquiries** Mrs Deanna Melbin, PA to the Principal  
**Email** [bedepolding@parra.catholic.edu.au](mailto:bedepolding@parra.catholic.edu.au)



## OUR FIRST PEOPLES

Bede Polding College acknowledges the Darug people as the traditional owners of the beautiful land on which we work and learn. We respect the generations of the past, present and future. We are inspired by their traditions and spirituality, and commit to a harmonious future, while actively working towards reconciliation and equity.

## VISIT US IN 2022

The College Open Afternoon will be conducted in Term 1, 2022. This will include school tours. Please consult our website and social media for specific times and details. Enrolments are now open for Year 7 2023, and enrolment packs can be obtained via our website, or from our College office.

## QUICK FACTS

- We are named after John Bede Polding, Australia's first Bishop.
- Our motto, 'Called to bring peace', is in honour of the 1986 International Year of Peace.
- We collaborate with three wonderful Catholic Primary Schools.
- We offer school-based apprenticeships and traineeships and a large range of VET subjects.
- Accelerated courses in stages 5 and 6.
- Innovative cross-curricular offerings.
- An explicit wellbeing program, to help build resilience and develop character strengths.
- A very inclusive community.
- A rich agricultural heritage in the Hawkesbury.
- Broad range of sporting activities.

### GENDER

Co-educational

### YEAR RANGE

Yr 7 - 12

### ENROLMENT

1,100 students

### YEAR 7

210 students  
7 classes

### LANGUAGES

French & Japanese

### FEES 2022

Please visit our website

### HSC SUBJECTS

50

### VET

Yes

### UNI OFFERS

75%

### CONNECT VIA



## WHAT MAKES US SPECIAL

Bede Polding College has a clear agenda of both learning and wellbeing, founded on Gospel values.

Our Learning Framework fosters connections between school-based learning and real-world contexts with a focus on promoting experienced, engaged and empowered learners.

We develop and support student learning growth by fostering the 21st century skills of collaboration, critical thinking, curiosity and creativity.

We aim to empower learners to seek and apply feedback, and to engage in individual goal setting in collaboration with their mentors and teachers, in conjunction with our wellbeing program, for a holistic, student-centred approach.

The College is uniquely situated in the semi-rural Hawkesbury valley, at the foothills of the Blue Mountains.

The cross sections of agriculture and industry, development as well as history, have brought together a hardworking community, strong in faith and with a sense of mission inspired by the endeavours of our College patron, John Bede Polding, who was Australia's first Bishop.

## BUILDING RESILIENCE

In recent years, Bede Polding College has embarked on an explicit wellbeing program called 'GEM'.

Taking cues from the work of 'The Resilience Project', and founded on the principles of positive psychology, the pillars of gratitude, empathy and mindfulness are key in the conversations and approaches taken throughout the school.

These pillars are designed to build resilience, and could not have been better timed than amid a pandemic.

Despite the disruption, and at times the distance, the relational nature of GEM meant that students stayed connected, and continued to have a sense of belonging, both with each other, their College House, as well as with their GEM Mentor – a teacher they see every day, who knows them and works with them to build character strengths and set goals for learning and wellbeing.

GEM fosters leadership within our students, by identifying their natural character strengths and drawing out their potential.

The growth of our team of student leaders from Years 7 to 12, has shown that students learn best when they are feeling well supported, known, and empowered to make choices about their decisions while at school, and for their life beyond school.

Bede Polding College takes pride in empowering its students for lifelong learning and wellbeing.







# Bethlehem College

Est. 1881

*'Excellence in Educating Young Women since 1881'*

## KEY INFORMATION

**Address** 18 Bland St, Ashfield NSW 2131  
**Telephone** 02 9798 9099  
**Website** bethlehemcollege.nsw.edu.au  
**Principal** Ann Freeman  
**Enquiries** Petrina Filetti  
**Email** info@bcashfield.catholic.edu.au

## WHAT MAKES US SPECIAL

Bethlehem College has a wonderful and well earned reputation for being at the forefront of girls' education. In fact, Bethlehem was the first girls' school to have science labs! Fast forward now for a peek into the future and you will see that passion for education and the wellbeing of the young women in our care is still alive and well. Bethlehem is continuing to push the boundaries to provide the very best in education for young women.

Underpinning Bethlehem's educational strategies is an understanding of each individual student and their academic and emotional needs, and an understanding of what skills they will need to succeed in the future. Some of the educational initiatives we have added to our curriculum to meet these needs include a Global Capabilities & Entrepreneurship program, an Instructional Specialist in the key area of Literacy, a Pathways & Partnerships Program, a dedicated Numeracy program, Chinese, Japanese & Italian languages electives and participation in the Tournament of the Minds & Titration Chemistry Competitions. However, initiatives and programs cannot work without enthusiastic students who are able to think critically, be creative and take responsibility for their own learning.

At Bethlehem, we find that our girls are happy girls who want to be at the College with their teachers and friends. They use words such as exciting, interesting, refreshing and stimulating to describe their days. They desire and expect to operate with autonomy and choice and at Bethlehem, we allow students to have a voice in their learning. Our leadership and wellbeing programs work side by side to develop independent, creative thinkers and confident young women who are ready to take their place in the world beyond Bethlehem.

## BUILDING RESILIENCE

At Bethlehem College, we are committed to equipping our young women with a high-efficacy education that will prepare them for a world that is characterised by change, an educational foundation that ensures girls know how to learn and be given the tools to best equip them for a future that will challenge their responses to social and ethical paradigms.

Our focus areas of school life, parish connections and community ministry, enable students to respond to innovation and develop their ability to foster collaborative processes and relationships through a spirit of inquiry, confidence and self-reflection – all essential to learning and effective teaching principles which promote excellence.

We aim to build resilient students by preparing them to be strong, confident and decisive leaders of the future, by ensuring wellbeing, thinking and learning are integrated as they are inextricably linked.

We offer many wellbeing and leadership opportunities that promote resilience and confidence through various programs.



## OUR FIRST PEOPLES

Bethlehem College acknowledges the Gadigal & Wangal People as the Traditional Owners of the land on which our school is placed.

We are inspired and nurtured by the wisdoms, spiritualities and experiences of our First Nations Peoples. Together we work actively for reconciliation, justice, equity and healing.

## VISIT US IN 2022

We invite you to experience Bethlehem college first hand at our Open Day, Wednesday 9th March or at one of our regular School Tours.

To book a tour please call the College or visit our website.

## QUICK FACTS

- All girls' school 7-12
- Entrepreneurship and Global Opportunities Program
- Chinese, Japanese & Italian Languages offered
- An inclusive & culturally diverse learning community
- Close to public transport
- Wide range of subjects & activities including Duke of Ed & College Band
- Diverse Learning including the Newman Selective Gifted & Talented Program
- State of the art Music & Art facilities
- Up to date technology including 3D printing, engraving & laser cutting
- Recently completed building program with air conditioning throughout

## GENDER

Girls

## YEAR RANGE

Yr 7 - 12

## ENROLMENT

560 students

## YEAR 7

100 students  
4 classes

## LANGUAGES

Japanese, Chinese & Italian

## FEES 2022

Yr 7 \$4,582  
Yr 12 \$4,290

## HSC SUBJECTS

30

## VET

Yes

## UNI OFFERS

74%

## CONNECT VIA





# Casimir Catholic College

Est. 1983

'Believe, Strive and Succeed'

## KEY INFORMATION

**Address** 200 Livingstone Rd, Marrickville NSW 2204  
**Telephone** 02 9558 2888  
**Website** casimirmarrickville.syd.catholic.edu.au  
**Principal** Mrs Carmelina Eussen  
**Enquiries** Enrolments Registrar  
**Email** enrolments.05271@sydstu.catholic.edu.au

## WHAT MAKES US SPECIAL

CASIMIR CATHOLIC College is a Year 7-12 co-educational College which was established in 1983 from the amalgamation of De La Salle College and St Brigid's College, both of which had been landmark schools in the Marrickville area dating back to the 1930s.

The College exists to meet the educational needs of children from Marrickville and surrounding suburbs. It has a rich tradition, steeped in the values and customs of three religious orders: the Good Samaritan Sisters, the De La Salle Brothers and the Passionist Fathers.

The College is renowned for its genuine sense of community, friendly campus, vibrant, diverse and dynamic feel. The College has great relations with St Brigid's Church, Marrickville and very close connections with our feeder primary schools.

We aim to provide quality Catholic education with a focus on academic excellence – in turn, creating quality graduates with high standards and expectations, motivating and challenging students to achieve their potential. We endeavour to create a very organised, structured and settled environment.

The Newman Selective Gifted Education Program enriches and extends students to be curious, creative and critical thinkers. At Casimir, we are committed to educating our students to be strong, respectful global citizens.

## BUILDING RESILIENCE

### Educational Philosophy

The goal of the College is to provide quality Catholic education. We have a clear focus on academic excellence for all students.

Our philosophy is based on the premise that good education involves setting high standards and motivating and challenging students to achieve those standards.

We believe that good learning takes place in an organised, structured and disciplined environment. We have very clear expectations for our students in respect to the College uniform, grooming, manners, conduct, attitude and commitment to homework.

Respect for others is one of the College's basic rules. Every student is an individual and every student is important, irrespective of his or her class, age, colour, religion or ability.

We challenge our students to respect the person, the name and the property of every other student in the College.

The staff and students at Casimir respect each other and, as a result, there is a very happy and positive spirit within the school. It is a good, busy and exciting place to learn.



## OUR FIRST PEOPLES

Casimir Catholic College acknowledges the Gadigal People as the Traditional Owners of the land on which our school is placed. We are inspired and nurtured by the wisdoms, spiritualities and experiences of our First Nations Peoples. Together we work actively for reconciliation, justice, equity and healing.

## VISIT US IN 2022

It is our pleasure to welcome you to our school. We are delighted to have the opportunity to share our ethos, our story and our aspirations with you.

We invite you to come visit our school Open Day on Friday 4th March 2022.

## QUICK FACTS

### Challenge

- To strive and develop as learners with a growth mindset

### Commit

- To be persistent, resilient and to succeed in all that we do

### Collaborate

- To work together and learn from each other in achieving our goals

### Connect

- To be immersed in our Catholic, local and global communities

### Create

- To engage in creative thinking through authentic learning experiences

## GENDER

Co-educational

## YEAR RANGE

Yr 7 - 12

## ENROLMENT

820 students

## YEAR 7

174 students  
6 classes

## LANGUAGES

Japanese Centre of Excellence

## FEES 2022

Yr 7 \$4,935  
Yr 12 \$5,145  
estimated fees for 2022

## HSC SUBJECTS

30 approx

## VET

Yes

## UNI OFFERS

Contact the College

## CONNECT VIA







# Catherine McAuley Westmead

Est. 1966

*'Educating young women for the future'*

## KEY INFORMATION

**Address** 2 Darcy Rd, Westmead NSW 2145  
**Telephone** 02 9849 9100  
**Website** [mcauley.nsw.edu.au](http://mcauley.nsw.edu.au)  
**Principal** Mary Refalo  
**Enquiries** Marina Kazzi  
**Email** [mcauleywestmead@parra.catholic.edu.au](mailto:mcauleywestmead@parra.catholic.edu.au)

## WHAT MAKES US SPECIAL

Catherine McAuley Westmead is a Catholic systemic school offering a comprehensive education for girls from Years 7 to 12.

Located at Westmead, in close proximity to the central business district of Parramatta, the school began operation in 1966.

Founded by the Parramatta Sisters of Mercy, Catherine McAuley Westmead has a strong Mercy charism. Inspired by our founder, Venerable Catherine McAuley, we aspire to a God-centred way of life, which respects and affirms the dignity of each person.

We commit to excellence in girls' education and empower young women to be actively involved in social justice.

We value our diversity and inclusiveness and the creation of a warm and inclusive community where all feel safe and valued is a key focus of life at Catherine McAuley.

Pastoral Care complements our academic program and is central to the organisation and operation of the school.

It is based on the core Mercy values of mercy, justice, excellence, integrity, courage and hospitality and recognises the need to address the spiritual and emotional wellbeing of the young women in our care.

Pastoral care programs at each year level are designed to help build resilience, independence and courage within each student.

## BUILDING RESILIENCE

At Catherine McAuley Westmead, the school strives to educate young women for the future with a strong emphasis on female leadership and developing confident students who recognise the challenges in their learning.

The school helps students build resilience, wisdom and self-efficacy by encouraging students to take risks in their learning and to solve complex problems in their learning.

Students are encouraged to embrace challenges and see them as an opportunity for growth.

The school provides many opportunities for students to take on leadership roles and offers activities to help develop their confidence.

Debating, public speaking, performing arts evenings, sporting competitions, liturgies, hospitality, environmental initiatives and social justice activities are just some examples.

The school has an active Student Representative Council and senior students have the opportunity to take on leadership positions in a variety of areas.



## OUR FIRST PEOPLES

Catherine McAuley Westmead acknowledges the Burramatta People as the Traditional Owners of the land on which our school is placed.

We are inspired and nurtured by the wisdoms, spiritualities and experiences of our First Nations Peoples. Together we work actively for reconciliation, justice, equity and healing.

## VISIT US IN 2022

School tours will be offered in Term 1 and Term 4 of 2022.

Visit the school website under 'Enrolment' for more information.

## QUICK FACTS

- 'Strive for Higher Things' is the school motto
- The school is part of the 'Mercy 6' Mercy schools in Sydney
- Outstanding HSC results are consistently achieved
- Excellent results were achieved in NAPLAN 2021
- There is a strong emphasis on technology and STEM activities
- An extensive performing arts program is on offer
- We seek to develop in our students an awareness of those in need
- Our learning programs are supported by an exceptionally well equipped campus
- VET Hospitality students run a student cafe
- Students partner with WSU for participation in a Masterclass program

### GENDER

Girls

### YEAR RANGE

Yr 7 - 12

### ENROLMENT

1,200 students

### YEAR 7

210 students  
7 classes

### LANGUAGES

French, Japanese  
& Italian

### FEES 2022

Please contact the  
school or refer to  
school website

### HSC SUBJECTS

45

### VET

Yes

### UNI OFFERS

85%

### CONNECT VIA





# Kincoppal - Rose Bay

Est. 1882

'Educating Hearts & Minds'

## KEY INFORMATION

**Address** New South Head Rd, Rose Bay NSW 2029  
**Telephone** 02 9388 6000  
**Website** [krb.nsw.edu.au](http://krb.nsw.edu.au)  
**Principal** Maureen Ryan  
**Enquiries** Sue Lancaster  
**Email** [admissions@krb.nsw.edu.au](mailto:admissions@krb.nsw.edu.au)



## OUR FIRST PEOPLES

Kincoppal - Rose Bay acknowledges the Gadigal People as the Traditional Owners of the land on which our school is placed.

We are inspired and nurtured by the wisdoms, spiritualities and experiences of our First Nations Peoples. Together we work actively for reconciliation, justice, equity and healing.

## VISIT US IN 2022

Join us at our Open Day in March 2022 or attend an Information Session to find out more about KRB.

## QUICK FACTS

- A part of a global network of 150+ schools in 41 countries.
- Coeducational Junior School to support positive relationships.
- Personalised academic and wellbeing model.
- Diverse boarding community – international, regional and rural students.
- Five unique Sacred Heart Goals.
- Graduate with an International Passport to the Sacred Heart Network.
- Private access to the foreshore beach.
- Extensive bushland with environmental and sustainability programs.
- Indoor multipurpose auditorium to support many cocurricular activities.

### GENDER

Co-educational ELC - Yr 6  
Girls Yr 7 - 12 (Boarding & Day)

### YEAR RANGE

ELC - Yr 12

### ENROLMENT

1,000 students

### YEAR 7

98 students  
4 classes

### LANGUAGES

French, Italian,  
Mandarin & Japanese

### FEES 2022

ELC \$20,436  
Yr 7 - 12 \$46,968

### HSC SUBJECTS

36

### VET

No

### UNI OFFERS

Contact the College

### CONNECT VIA



## WHAT MAKES US SPECIAL

Kincoppal-Rose Bay is a leading Catholic independent school and part of the international network of Sacred Heart Schools.

We are located in Rose Bay in Sydney's Eastern Suburbs, against the stunning backdrop of Sydney Harbour. Our school caters for boys (ELC-6) and girls day (ELC-12) and boarding (Years 7-12).

We use education to help each individual discover their purpose while cultivating their talents and passions. Importantly, we foster a commitment to service as global citizens of the world.

Our academic and co-curricular programs promote global awareness and social responsibility, with students encouraged to become alert to the world beyond their own lives and to act where the need exists.

KRB is a school with a strong spirit and an even stronger heart that remains committed to developing young men and women of integrity and compassion, who are equipped with a lifelong love of learning.

Our focus is on the positive education of the whole student – educating both the Heart and the Mind as the School's motto 'Cor Unum' suggests.

We encourage our students to pursue their personal strengths, passions and talents; become independent, lifelong learners; develop empathy with others; and feel secure in their world with the belief that they have the capacity to transform it.

## BUILDING RESILIENCE

Positive Education is the philosophy that underpins all that we do at Kincoppal-Rose Bay School through our Academic Care program.

Martin Seligman's work in Positive Psychology has evolved over the past two decades and the current emphasis is on developing grit, resilience and persistence within young people.

Our Academic Care program, led by the Pastoral Team, drives this focus and for it to continue to be successful, parents, educators and students must work together.

Academic Care is provided holistically for our students by all Sacred Heart educators, but a significant focus is via the Pastoral Program, which is firmly based on the Sacred Heart Goals, and is delivered through a variety of structured activities, which aim to increase student awareness of issues, such as bullying and mental health, as well as develop the skills of resilience, confidence, independence, and leadership.

These programs are underpinned by a conceptual framework that is articulated in regards to the students' developmental stage.







# Loreto Kirribilli

Est. 1908

*"Be seekers of truth and doers of justice" - Mary Ward*

## KEY INFORMATION

**Address** 85 Carabella St, Kirribilli NSW 2061  
**Telephone** Senior School: (02) 9957 4722  
Junior School: (02) 9954 0374  
**Website** [loreto.nsw.edu.au](http://loreto.nsw.edu.au)  
**Principal** Mrs Anna Dickinson  
**Enquiries** Enrolment Office  
**Email** [registrar@loreto.nsw.edu.au](mailto:registrar@loreto.nsw.edu.au)

## WHAT MAKES US SPECIAL

### A School with Spirit

Step through the front gates of Loreto Kirribilli, and you will encounter what is warmly referred to throughout our community as our school 'spirit'.

Intangible, indefinable, our school spirit is the reason our harbourside campus is vibrant, welcoming and full of life, and why every student develops a deep sense of belonging to a rich community of faith.

It is our spirit that imbues every learning opportunity, every feast day and sporting event.

Perhaps it is the very same spirit that over 400 years ago gave our foundress, Mary Ward, the courage and strength of faith to establish her schools for girls; girls who would come to be 'seekers of truth and doers of justice.'

### Our Values

Our strength is driven by our values; verity, justice, sincerity, felicity, and freedom of mind and spirit.

We nurture these qualities in our students to assist them to become women of purpose, with a profound sense of their own worth and an enduring sense of responsibility to others. Social justice, student advocacy and leadership opportunities are just some of the ways our students are challenged to use their gifts with courage and purpose to serve others.

### Culture of Excellence

At our heart is a culture of growth and excellence, where every student has the opportunity to flourish intellectually, culturally, socially and spiritually. We celebrate success and champion endeavour.

We develop lifelong learners who are collaborative, creative, critical thinkers, equipped to be positive agents for change in our constantly evolving world.

## BUILDING RESILIENCE

Our resilience is grounded in our faith and in our values. From the moment our youngest students are welcomed into the Kindergarten classroom, we foster in them the character strengths required to face adversity and embrace the unfamiliar and we are guided and inspired by our faith every step of the way.

We are blessed with a learning community where positive relationships flourish. With our multi-faceted pastoral care model we create a culture of gratitude, in which each student comes to understand her responsibility to enhance both her own wellbeing as well as that of the community at large.

Our students grow into Loreto Kirribilli women of courage who, with compassion and generosity, are determined to lead, to inspire, and to shape the future.

Welcome to Loreto Kirribilli.



## OUR FIRST PEOPLES

We acknowledge the traditional owners and custodians of the land on which we stand, the Cammeraygal people of the Eora Nation.

May we continue to love and respect the land as they have.

## VISIT US IN 2022

We are looking forward to welcoming families to our Kirribilli campus in 2022.

Please visit our website at [www.loreto.nsw.edu.au](http://www.loreto.nsw.edu.au) for dates, times and the most up to date information.

## QUICK FACTS

### Discover

- NEW Innovation Centre 2022
- NEW website [www.loreto.nsw.edu.au](http://www.loreto.nsw.edu.au)
- 400+ years of heritage

### Learn

- Loreto Kirribilli Learning Lens – engaging with the bigger picture
- Loreto Academic Mentoring Program (L.A.M.P.) K-12
- Mary Ward Connect Exchange Program

### Flourish

- Social justice and student advocacy initiatives
- Circle Class 'family' for continuity of care through Years 7-12
- 'Something more' - extensive choice of extra-curricular opportunities

### Connect

- LK Connect Mentoring & Networking Program

## GENDER

Girls

## YEAR RANGE

Kindergarten – Year 12

## ENROLMENT

1,100+ students

## YEAR 7

150 students (approx.)  
6 classes

## LANGUAGES

French, Italian & Mandarin

## FEES 2022

Visit [loreto.nsw.edu.au](http://loreto.nsw.edu.au)

## HSC SUBJECTS

39

## VET

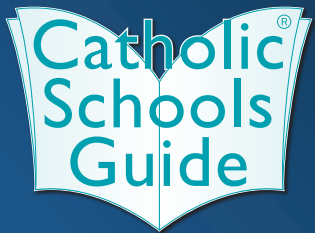
Yes

## UNI OFFERS

Visit [loreto.nsw.edu.au](http://loreto.nsw.edu.au)

## CONNECT VIA





## 2022 COMPETITION

# BUILD A BIG LEGO TOWER

### TO WIN BIG FOR YOUR SCHOOL!

Every Catholic school in Australia is invited to enter this competition to win an All New CommBox Interactive Touch Screen from Integrate AV. Schools may enter as many times as they like.

5 Simple Steps to Enter:

1. Construct the tallest single-stack LEGO tower you can make using only LEGO 8 knob storage bricks.
2. You can use a LEGO base mat for support and build your tower with one single brick on top of each other.
3. Build the freestanding tower as tall as you possibly can without using other aids such as bracing or glue.
4. Once your tower is completed, take a photo of it and count how many single bricks the tower is in height (not counting the base mat).
5. Register your school entry via [www.catholicschoolsguide.com.au/competitions/](http://www.catholicschoolsguide.com.au/competitions/) and include your photo and number of bricks in height.

COMPETITION CLOSING  
**MONDAY 1 AUGUST 2022**  
WINNER WILL BE ANNOUNCED MONDAY 8 AUGUST 2022

**75"** **commBOX**  
CLASSIC INTERACTIVE PANEL



#### Winning Entry

The winning entry will be the tallest tower, as judged by the Catholic Schools Guide and Integrate AV team. The winner will be notified on Monday 8 August and also announced on the Catholic Schools Guide website.

PROUDLY SPONSORED BY

**INTEGRATE AV**



# COMPETITION PRIZE

- ▶ All New 75" CommBox Classic Interactive Touch Screen
- ▶ Integrate AV Motorised Centerlift Mobile Trolley
- ▶ Logitech Brio 4K Webcam
- ▶ Delivery & Installation by Integrate AV
- ▶ 7 Year CommBox Warranty

**ENTER YOUR SCHOOL  
TO WIN AN AMAZING PRIZE  
VALUED OVER \$9500!**

Terms and Conditions:

Full terms and conditions are listed via Catholic Schools  
Guide website [catholicschoolsguide.com.au/competition](https://catholicschoolsguide.com.au/competition)

**1800 742 748** [INFO@INTEGRATEAV.COM.AU](mailto:info@integrateav.com.au)



**commBOX**  
CLASSIC INTERACTIVE PANEL



# Loreto Normanhurst

Est. 1897

*'Cruci Dum Spiro Fido  
As long as I live, I put my  
trust in Christ.'*

## KEY INFORMATION

**Address** 91-93 Pennant Hills Rd,  
Normanhurst NSW 2076  
**Telephone** 02 9473 7300  
**Website** [loretonh.nsw.edu.au](http://loretonh.nsw.edu.au)  
**Principal** Marina Ugonotti  
**Enquiries** Marian Hutson  
**Email** [enquiries@loretonh.nsw.edu.au](mailto:enquiries@loretonh.nsw.edu.au)

## WHAT MAKES US SPECIAL

In the spirit of our foundress Mary Ward, who believed that “women in time to come will do much,” Loreto Normanhurst encourages young women to take their place in the world as seekers of truth and instruments of justice. The award-winning Loreto Normanhurst Student Growth Model emphasises collaboration, creative and critical thinking, digital capabilities, adaptability and independence. By offering a breadth of learning experiences inside and outside the classroom, it develops our students into agile and resilient thinkers who are prepared to navigate an ever-changing global landscape. The cornerstone of the LNSGM is the FACE Curriculum, which places equal importance on the holistic development of each student across Faith, Academic, Community and Extra-curricular.

The model is also supported by a strong Pastoral Care program featuring a House system and advisors and tutors who care for the students and get to know them as a whole person. Through our extensive extra-curricular programs, students have further opportunities to support their learning and growth through leadership, social justice, sport, music, oratory, speech and drama. The success of the LNSGM is evident in our consistently high HSC Results and the formation of our graduates as ‘Compassionate Warriors’: independent, articulate and compassionate women of grit, independent thinking, voice, creativity, conscious faith and service.

Loreto Boarding enriches the diversity of our thriving community by connecting students from all over Australia and the world. Our fully flexible boarding model welcomes students from ex-pat and overseas families and the Sydney basin, with 80% of our boarders coming from rural NSW.

## BUILDING RESILIENCE

At Loreto Normanhurst, we continue to strengthen our whole-school approach to wellbeing and understand that it is inextricably linked to encouraging each student to fulfill their academic and personal potential.

We were delighted in 2021 to launch the school's bespoke social and emotional learning program, OakSEED. The program was developed in consultation with leading child psychologist Dr Danielle Einstein and commissioned by Loreto Normanhurst to sit within our Pastoral Care Program. The OakSEED program develops the knowledge, skills and attitudes across five areas of social and emotional competence which become essential protective factors for wellbeing.

The program brings together a single language and metaphor of resilience represented by the historical significance of the school's Oaktree. The Oak Tree stands strong and tall, and its spiralled trunk has a capacity to flex in the wind. It has strong intertwined roots that hold it firmly to the ground, to represent the Loreto Normanhurst community and the school values of Sincerity, Justice, Freedom, Felicity and Verity.



## OUR FIRST PEOPLES

We acknowledge and pay respect to all Aboriginal peoples, the traditional custodians of this land.

We commit ourselves to actively work alongside Aboriginal and Torres Strait Islander people for reconciliation and justice.

## VISIT US IN 2022

North Shore Independent Schools Expo: 5-6 March  
Open Day: 19 March  
The Hills Independent Schools Expo: 2-3 April  
Spring Fair: 30 October

Twilight Tours are offered each term.  
Visit our website to book:  
[www.loretonh.nsw.edu.au](http://www.loretonh.nsw.edu.au)

## QUICK FACTS

- Consistently high HSC Results (85 students received an ATAR of 90 and above in 2020)
- Award-winning Student Growth Model
- Ground-breaking holistic learning approach (FACE Curriculum)
- Oakseed bespoke wellbeing pastoral program
- Extensive Extra-curricular Program
- Focused Parent Engagement and Education Program
- Fully flexible Boarding Model
- Annual student-led Music Festival
- Student leadership opportunities from Y5-12
- Immersive Learning Program including Y9 Far North Queensland Experience

### GENDER

Girls

### YEAR RANGE

Yr 5 - 12

### ENROLMENT

1,175 students

### YEAR 7

175 students  
8 classes

### LANGUAGES

French, Italian  
& Chinese

### FEES 2022

Yr 7 \$24,849  
Yr 12 \$28,137

### HSC SUBJECTS

36

### VET

Yes

### UNI OFFERS

97.5%

### CONNECT VIA







# MacKillop Catholic College

Est. 2003

'Christ Our Light'

## KEY INFORMATION

**Address** 91 Sparks Rd, Warnervale NSW 2259  
**Telephone** 02 4392 9399  
**Website** [mccwdbb.catholic.edu.au](http://mccwdbb.catholic.edu.au)  
**Principal** Jason Hanrahan  
**Enquiries** Janine Silver - Enrolments  
**Email** [smccw@dbb.catholic.edu.au](mailto:smccw@dbb.catholic.edu.au)

## WHAT MAKES US SPECIAL

MacKillop Catholic College Warnervale is the only K-12 Catholic School on the Central Coast.

Among the many unique features of our College is the blending of a Catholic School and on-site church.

MacKillop has built a reputation for providing academic excellence, spiritual enrichment, quality learning support, leadership programs, and sporting & cultural experiences.

We strive to provide quality K-12 Catholic education for all students of our community following Christ as our Light in the spirit of Mary MacKillop.

## BUILDING RESILIENCE

Our College and Parish creates a vibrant Catholic faith community, radiating Christ as Our Light.

Our values of Faith and Discipleship and a call to Mission help strengthen a deep faith, and our students gain a strong sense of compassion and justice.

We strive to provide a stimulating learning environment, and our College enables all students, with the collaboration of teachers and parents, to achieve their personal best.

Quality teaching and learning are a key focus of our College community.

Strengthening partnerships across students, staff, family, parish and the wider community, our College community continues to shape each person's development.

Our pastoral support develops resilient and respectful members of society.



## OUR FIRST PEOPLES

MacKillop Catholic College acknowledges the Darkinjung People as the Traditional Owners of the land on which our school is placed.

We are inspired and nurtured by the wisdoms, spiritualities and experiences of our First Nations Peoples. Together we work actively for reconciliation, justice, equity and healing.

## VISIT US IN 2022

Open Day -  
Wednesday, 9 March 2022

## QUICK FACTS

- The only K-12 Catholic School on the Central Coast
- Unique blending of school and Parish community, with a church on site
- Quality academic support and leadership programs
- Various sporting programs with opportunities to represent at regional, national and international levels
- Solid core values following Christ as our Light in the spirit of Mary MacKillop
- A strong focus on Mission, Compassion and Justice
- College houses promoting inclusivity and a sense of belonging
- State of the art technology
- A broad range of subjects throughout Secondary
- VET, Careers and Pathways, and Gifted/Talented programs

### GENDER

Co-educational

### YEAR RANGE

Kindergarten - Yr 12

### ENROLMENT

1,600 students

### YEAR 7

160 students  
7 classes

### LANGUAGES

Japanese

### FEES 2022

Yr K - 6 \$3,019  
Yr 7 \$4,245  
Yr 12 \$4,816

### HSC SUBJECTS

12

### VET

Yes

### UNI OFFERS

50%

### CONNECT VIA





# Monte Sant' Angelo Mercy College

Est. 1875

'Mercy Through Justice'

## KEY INFORMATION

**Address** 128 Miller St, North Sydney  
NSW 2060

**Telephone** 02 9409 6200

**Website** [monte.nsw.edu.au](http://monte.nsw.edu.au)

**Principal** Mrs Nicole Christensen

**Enquiries** [registrar@monte.nsw.edu.au](mailto:registrar@monte.nsw.edu.au)

## WHAT MAKES US SPECIAL

Monte Sant' Angelo Mercy College has been educating young women for more than 146 years, continuing excellence in Catholic education in the way of our founders, the Sisters' of Mercy North Sydney.

As a leading independent girls' College, we are renowned for our innovative approach to education, extensive curriculum choice and diverse co-curricular program.

The College offers the International Baccalaureate Middle Years Programme (IB MYP) in Years 7-10 as the framework to deliver the NSW curriculum and both the Higher School Certificate (HSC) and IB Diploma programme (IB DP) as pathways to academic excellence in Years 11-12.

Our world-class, contemporary facilities are at the forefront of academic excellence enabling collaborative, transformative thinking, and creativity, including the Scientia Project, a new science and sports facility equipped with enhanced teaching and learning spaces scheduled for completion in 2023.

The College's inspiring Principal, Mrs Nicole Christensen has set her sights firmly on ensuring "that the next generation of women know how to smash the glass ceiling by smashing the stereotypes that perpetrate it." (Nina Hendy, *Smashing the glass ceiling is part of the learning*, *Australian Financial Review*, 17 April 2021).

"There is no ceiling on potential. We talk about better, not best there is never a full stop," Mrs Christensen said. (*Australian Financial Review* Special Report, 13 September 2021).

## BUILDING RESILIENCE

### Service to others

We foster the uniqueness and leadership potential of our students and believe that every young woman, through knowledge, compassion and courage, has the ability to become a leading agent of change. We encourage our students not to be spectators in life, but to know when to stand up, stand out and stand beside others.

We are committed to ensuring every student is supported, nurtured and valued. Our pastoral care and co-curricular programs ensure our girls have a balanced, holistic education that supports them to become lifelong learners, with the capacity and ingenuity to participate in all facets of life.

Service to others is at the heart of College life. Students are encouraged to work for the common good, to be responsible stewards of our environment, to identify unjust social practices and to advocate for positive change.

For enrolment enquiries, or to join us for a College Tour, email [registrar@monte.nsw.edu.au](mailto:registrar@monte.nsw.edu.au)



## OUR FIRST PEOPLES

Monte Sant' Angelo Mercy College acknowledges the Cammeraygal People as the Traditional Owners of the land on which our school is placed. We are inspired and nurtured by the wisdoms, spiritualities and experiences of our First Nations Peoples.

## VISIT US IN 2022

We invite you to join us for our annual **College Open Day on Sunday 6 March 2022** to see all that Monte Sant' Angelo Mercy College has to offer your daughter.

Information Mornings and Tours are also held in Terms 2, 3 & 4. Visit [monte.nsw.edu.au](http://monte.nsw.edu.au) for more information.

## QUICK FACTS

- Debating & Public Speaking
- Duke Of Edinburgh Award
- Biamunga Indigenous Group
- Green Team
- Environmental Group
- Mercy Action Group & Fairtrade Café
- Music Academy
- Cultural Exchange & Immersion Programs
- Whole School Musical Productions
- Industry Partnerships
- 30 Sports & Activities

### GENDER

Girls

### YEAR RANGE

Yr 7 - 12

### ENROLMENT

1,170 students

### YEAR 7

200 students  
8 classes

### LANGUAGES

French, Italian, German,  
Spanish (IB ab initio)  
& Indonesian

### FEES 2022

Visit the College  
website

### HSC SUBJECTS

40 + 21 IBDP

### VET

Yes

### UNI OFFERS

97%

### CONNECT VIA







# Mount St Benedict College

Est. 1966

*'Inspiring Young Women,  
Transforming the Future'*

## KEY INFORMATION

**Address** 449C Pennant Hills Rd,  
Pennant Hills NSW 2120  
**Telephone** 02 9980 0406  
**Website** [msb.nsw.edu.au](http://msb.nsw.edu.au)  
**Principal** Michael Hanratty  
**Enquiries** Mrs Narelle McClure, Registrar  
**Email** [registrar@msb.nsw.edu.au](mailto:registrar@msb.nsw.edu.au)

## WHAT MAKES US SPECIAL

Mount St Benedict College was founded by the Sisters of the Good Samaritan in the Order of St Benedict in 1966 and celebrates fifty six years of educating young women. The College belongs to the community of ten schools across Australia called Good Samaritan Education (GSE). Established in 2011 by the Sisters of the Good Samaritan, the mission of Good Samaritan Education is to sustain and nurture our Catholic schools as Good Samaritan Benedictine communities of learning.

The core values of the College are Pax, Hospitality and Stewardship, and the promotion of holistic education in the spirit of Benedictine and Good Samaritan tradition. The College's newly launched Learning Framework addresses the faith and spirituality needs of students, their wellbeing priorities and their learning needs for the future. The Mount St Benedict College Learning Framework Tree is symbolic of our learner; she is at the heart of the tree, its trunk. Just like the tree, our learner grows and changes in the years she is a student at the College.

The Framework is based on our belief that Learning at the College is inspired and informed by our Benedictine, Good Samaritan heritage. Our students are encouraged to contribute to our Catholic community with the gifts given to them and learn how to use these gifts to make a difference in the world.

Learning experiences at Mount St Benedict College are developed in response to the diverse needs of our students, leading to a wide range of opportunities which meet the needs of individual students. Students are able to develop confidence in their use of technology and build their higher order thinking skills. 'Bennies' girls are able to develop their talents and become articulate, confident and compassionate young women, equipped to transform our world.

## BUILDING RESILIENCE

At Mount St Benedict College, we bring together the science of Positive Psychology and best teaching practice to encourage our students to flourish (optimal wellbeing) at school. Positive Education highlights students' understanding of their own strengths and develops skills that our students can harness to strengthen their relationships with everyone in their world. This includes building and understanding positive emotions, enhancing resilience when faced with adversity, practising mindfulness, and fostering a healthy lifestyle. It is underpinned by seeking meaning in life through service to others and providing skills in achieving personal goals. We encourage our girls to seek and cultivate the best within themselves and strike a fulfilling, manageable balance in their experiences of love, work and play. In our holistic vision of education, students are able to build their confidence through a wellbeing structure that includes a community of House groups and vertical Homerooms, Residential Education and Cocurricular Programs.



## OUR FIRST PEOPLES

Mount St Benedict College acknowledges the Darug People as the Traditional Owners of the land on which our school is placed.

We are inspired and nurtured by the wisdoms, spiritualities and experiences of our First Nations Peoples. Together we work actively for reconciliation, justice, equity and healing.

## VISIT US IN 2022

Our Open Day is Sunday 6 March. College Tours are also available and bookings are essential.

Expressions of Interest should be lodged online by the end of Year 4.

## QUICK FACTS

- 56 years of education for girls.
- College Learning Framework to equip young women to transform the future.
- Focus on girls' wellbeing.
- Commitment to spirituality and social justice.
- Bespoke Innovation Programs: MYBennies – Year 7 Integrated Course, The REAL Program – Years 9 and 10.
- Leading Residential Education Program.
- Diverse Cocurricular Program.
- Vibrant community of parents and ex-students.
- Comprehensive Orientation and Transition Program.
- Convenient transport options including the Bennies Private Bus Services.

### GENDER

Girls

### YEAR RANGE

Yr 7 - 12

### ENROLMENT

1,150 students

### YEAR 7

243 students  
9 classes

### LANGUAGES

German  
& Japanese

### FEES 2022

Yr 7 - 12 \$14,836  
plus Technology, P&F  
and Capital Levies

### HSC SUBJECTS

43

### VET

Yes

### UNI OFFERS

94%

### CONNECT VIA







# Oakhill College

Est. 1936

*'Feet on the ground.  
Aiming for the stars.'*

## KEY INFORMATION

**Address** 423-513 Old Northern Rd,  
Castle Hill NSW 2154  
**Telephone** 02 9899 2288  
**Website** oakhill.nsw.edu.au  
**Principal** Br Steve Hogan fsc  
**Enquiries** Registrar  
**Email** registrar@oakhill.nsw.edu.au

## WHAT MAKES US SPECIAL

At Oakhill College, we inspire our students to aspire to greatness. Whatever your child's interest or wherever their talents lie, there is an opportunity for them at Oakhill. Oakhill College was established in 1936 and is part of an extensive global network of De La Salle schools. Our holistic approach supported by Catholic values and traditions, prepares our students to serve and enrich a dynamic and ever-changing world. We focus on 21st century learning outcomes, world's best teaching practice, and expectations of excellence. As the largest Catholic school in NSW, we have the ability to provide an exceptional range of curricular, co-curricular and extracurricular opportunities. With your support, we aim for our graduates to go on to make their mark in the world and to be well-rounded people who aspire, achieve and succeed in their own way in school and beyond. Our students deserve an education that focuses on excellence, where they attain their potential and are prepared for life. We believe this education advances our students' abilities to use their talents to critically examine the world in light of the message of the Gospels and take greater responsibility for their education. As a parent, you know that no two children are the same. We value this diversity and respect the inherent dignity of each child, and we value them and their gifts – whatever they may be. At Oakhill College, we are a united community where diversity is respected, and no one is left out. We accept all our students, so that each may grow in the living presence of God in our world.



## OUR FIRST PEOPLES

Oakhill College acknowledges the Darug People as the Traditional Owners of the land on which our school is placed.

We are inspired and nurtured by the wisdoms, spiritualities and experiences of our First Nations Peoples. Together we work actively for reconciliation, justice, equity and healing.

## VISIT US IN 2022

We warmly invite you to join us for our Open Day on Sunday 6th March from 10.00am-2.00pm. College Tours are on Thursday 12 May, Thursday 11 August and Wednesday 26 October.

Please book via our website.  
www.oakhill.nsw.edu.au

## QUICK FACTS

- Top ATAR is consistently 99+
- Approx. 20% achieve an ATAR above 90
- 90% student involvement in co-curricular and service opportunities
- Highly motivated, dedicated and engaged staff
- The largest Catholic secondary school in NSW
- Consistently averages 5 percentage points above state average for HSC
- Unprecedented commitment to our Master Plan
- 55% of students achieve a Band 5 and 6
- Oakhill graduates make lasting and significant contributions to the community
- Leadership opportunities are offered across all years

### GENDER

Boys Yr 7 - 12;  
Girls Yr 11 - 12

### YEAR RANGE

Yr 7 - 12

### ENROLMENT

1,960 students

### YEAR 7

325 students  
14 classes

### LANGUAGES

French & Italian

### FEES 2022

Yr 7 \$11,089  
Yr 12 \$11,972  
Tuition only

### HSC SUBJECTS

51 subjects offered

### VET

6 VET courses

### UNI OFFERS

90%

### CONNECT VIA



## BUILDING RESILIENCE

Our Lasallian values are central to everything that we do. At our large campus in Castle Hill, we aim to provide excellence in academic pursuits and faith-based learning opportunities that develop our students' spiritual capacities, pastoral care, sport and a rich life beyond the classroom centred around building resilience. We use the latest advancements in technology, consistently update our learning pedagogy, and our staff are committed life-long learners at the forefront of change. Oakhill College provides a large range of curricular, co-curricular and extra-curricular opportunities, all of which have high participation rates. Students are encouraged to immerse themselves in activities to help nurture the important values of resilience, loyalty, confidence and pride. Our programs stretch and enhance students moving them out of their comfort zone in a safe environment, and allow them to find their place and strengths while remaining humble and building resilience. While our teaching is world's best, we have ensured that our facilities reflect the demands that our students will face in careers that haven't been established as yet. To this purpose, we are delighted with the progress of our Innovation Hub. This state-of-the-art learning environment will provide spaces for hybrid workshops (timber, fabrication and robotics), computer and graphics workshops and science and laboratory spaces, and will offer an experience of schooling that will prepare students to thrive in a rapidly changing world, empower them to explore new ideas, reflect and become knowledge-creators with their peers.







# Our Lady of Mercy Catholic College Burraneer

Est. 1937

*'Encouraging Girls - Empowering Women'*

## KEY INFORMATION

**Address** 62-66 Dominic St, Cronulla NSW 2230  
**Telephone** 02 9544 1966  
**Website** [www.olmcburraneeer.catholic.edu.au](http://www.olmcburraneeer.catholic.edu.au)  
**Principal** Mrs Leonie Pearce  
**Enquiries** Laura O'Donnell  
**Email** [info@olmcburraneeer.catholic.edu.au](mailto:info@olmcburraneeer.catholic.edu.au)



## OUR FIRST PEOPLES

Our Lady of Mercy Catholic College Burraneer acknowledges the Dharawal People as the Traditional Owners of the land on which our school is placed.

We are inspired and nurtured by the wisdom, spiritualities and experiences of our First Nations Peoples. Together we work actively for reconciliation, justice, equity and healing.

## VISIT US IN 2022

The OLMC Open Day will be held on Wednesday 9th March 2022.

Book now for a School Tour.

See Website for details.

## QUICK FACTS

- Newman Selective Gifted Program
- Duke of Edinburgh Program
- STEM
- Performing Arts Musicals
- Mercy Action Group
- Representative Sport
- Debating and Public Speaking
- Vocal Ensemble and Choir
- CaSPA
- Fitness and Yoga

## GENDER

Girls

## YEAR RANGE

Yr 7 - 10

## ENROLMENT

421 students

## YEAR 7

102 students  
4 classes

## LANGUAGES

French, Spanish,  
German & Mandarin

## FEES 2022

Yr 7 \$5,143 approx.  
Yr 10 \$4,970  
excl. electives

## HSC SUBJECTS

Supporting students  
transitioning to  
Stage 6 and beyond

## VET

TAFE and  
Micro-credentialing

## UNI OFFERS

N/A

## CONNECT VIA



## WHAT MAKES US SPECIAL

Our Lady of Mercy Catholic College Burraneer, located in Cronulla, is the only Catholic school specialising in girls' education in the Sutherland Shire underpinned by the tradition and values of the Mercy Charism. A College inspiring excellence in learning; where each learner with agency, engages in a personalised pathway, with opportunities to connect to industry, tertiary and outside agencies promoting real world experiences, developing the skills of autonomous learners. Students become confident lifelong learners grounded in an innovative, future focused curriculum, fostering deep learning, so that as empowered women, they will contribute to the common good, address global challenges and flourish in a complex world. The College vision 'Encouraging Girls - Empowering Women' is realised through dynamic teaching and personalised learning. OLMC maintains a supportive learning environment, tailored to developing each students' intellectual, social, physical, spiritual and emotional potential. The College values academic excellence, recently being recognised in the top 50 schools in Sydney for NAPLAN. We also specialise in Gifted Education, through the Newman Program STEM, with its focus on girls' learning in Science, Mathematics and Technology, is actively embraced. Our learning spaces offer contemporary, innovative, state of the art facilities where students engage in diverse and collaborative experiences. Our Performing Arts Centre caters for Drama, Music and Dance, as well as PDHPE. Currently, there is a clear pathway to Year 12, with students through De La Salle (Senior) Catholic College, Cronulla, with consistent outstanding HSC results. Our students are challenged to live the Mercy values of compassion, justice and hospitality each day. Retreats and reflection days focus on spirituality and promote a vibrant and meaningful liturgical life. Vertical homerooms promote friendly and respectful relationships, with older students encouraged to take leadership in Peer Support and Pastoral Care programs. As well as their Year group, all girls belong to a house connected to our Mercy tradition.

## BUILDING RESILIENCE

Our Lady of Mercy College is a school community that promotes a caring and peaceful environment where each student is able to grow and reach potential. We seek to build a safe and compassionate Christian environment in which everyone has the right to feel safe and valued and where individual differences are accepted as everyone's right. Everyone shares in the responsibility of caring for others within and beyond the College community. This safe environment enables our students to explore their interests and find their passions and strengths. Our approach to Pastoral Care is grounded in Restorative Practice which ensures that each girl has the opportunity to understand the choices they make and the impact they have on others. We use the Visible Learning approach to teaching and learning, encouraging student voice and agency. We build strong connections between staff and students, as well as between the families and the College. We see this environment as providing a strong foundation for our girls to grow into empowered women ready to address personal, local and global challenges and flourish in a complex world.







# OLMC Parramatta

Est. 1889

*'Sub Tuum Praesidium –  
Under Your Protection'*

## KEY INFORMATION

**Address** Victoria Rd, Parramatta NSW 2150  
**Telephone** 02 9683 3300  
**Website** [olmc.nsw.edu.au](http://olmc.nsw.edu.au)  
**Principal** Ms Lucie Farrugia  
**Enquiries** Julie McIntyre  
**Email** [enrolments@olmc.nsw.edu.au](mailto:enrolments@olmc.nsw.edu.au)

## WHAT MAKES US SPECIAL

Our Lady of Mercy College Parramatta is a leading Catholic independent girls' school founded on the Mercy Charism. Since 1889, OLMC Parramatta has been committed to excellence in education, respect for the dignity of each individual and the development of a strong sense of justice and social responsibility.

Our vision is to provide a contemporary Mercy Education that empowers young women to lead with courage and act justly, making a difference in whatever sphere of life they choose to move, in the spirit of Venerable Catherine McAuley. We are committed to enabling every student to grow by developing her unique gifts and talents.

As one of the oldest Catholic girls' schools in NSW, we are expert in educating girls within a safe and happy environment, supporting the academic wellbeing of each of our students.

Our renowned success comes from our staff who have a deep understanding of how to meet developmental needs in adolescent girls, enabling our students to grow, learn and strive for excellence.

## BUILDING RESILIENCE

From its earliest beginnings, OLMC has been championing the education of women, fostering girls to become courageous advocates with limitless possibilities.

All aspects of a Mercy education work together to build resilience in our students; pastoral care, like mission and learning excellence, is integrated into all that we do at the College. Pastoral Care is an integrated process of education and skill building that is based on relationships and affirmation, supportive and celebratory in its academic care approach. Our approach is intentionally designed to help foster wellbeing and resilience, creating an environment where each girl feels supported, safe and ready to take a chance, believing in her potential.

OLMC is a closely knit, inclusive community made up of smaller families. The House System fosters strong links between girls, teachers and parents/carers. Mercy Girls stay in the same Homeroom during their time at the College; by knowing each girl and building positive relationships, staff can effectively meet their needs.

As a girls' school, every day students see girls achieving, taking leadership roles, trying new things and succeeding. At the age where girls are forging their identities and aspirations, they are free to focus on strong friendships and to dare to imagine what is possible.

Our extensive Cocurricular Program offers opportunities to try new things, be challenged and excel in a wide variety of interests because we believe that a life beyond the classroom builds confidence, friendships, resilience and an adventurous mindset.



## OUR FIRST PEOPLES

OLMC acknowledges the Barramatagul People of the Darug Nation as the Traditional Owners of the land on which our school is placed.

We are inspired and nurtured by the wisdoms, spiritualities and experiences of our First Nations Peoples. Together we work actively for reconciliation, justice, equity and healing.

## VISIT US IN 2022

We welcome you to our Open Day on Sunday, 6 March 2022.

This day will provide an opportunity to see Mercy Girls in action, meet staff, take part in activities and tour our campus. Register via our website.

## QUICK FACTS

- One of the oldest independent Catholic girls' schools in NSW.
- Built on the site of the first convent in Australia – St Mary's Convent.
- Founded by the Sisters of Mercy in 1889. For 115 years, the leadership of the College was in the hands of seven successive Sisters of Mercy.
- Located in the heart of Parramatta.
- Vertical House Pastoral System.
- Year 7 Transition Program consisting of team building, communication and collaboration.
- Ambitious Master Plan currently underway.
- Strong commitment to Social Justice.
- Extensive Co-curricular Program.
- Excels in Public Speaking and Debating.

### GENDER

Girls

### YEAR RANGE

Yr 7 - 12

### ENROLMENT

1,029 students

### YEAR 7

186 students  
8 classes

### LANGUAGES

French, Japanese  
& Spanish

### FEES 2022

Yr 7 \$12,730  
Yr 12 \$14,730

### HSC SUBJECTS

40

### VET

Yes

### UNI OFFERS

89%

### CONNECT VIA







# Our Lady of the Sacred Heart College, Kensington

Est. 1897

## KEY INFORMATION

**Address** 36 Addison St, Kensington NSW 2033  
**Telephone** 02 9662 4088  
**Website** [olshkensington.syd.catholic.edu.au](http://olshkensington.syd.catholic.edu.au)  
**Principal** Brigid Taylor  
**Enquiries** Margaret Murray  
**Email** [enrolments@olshkensington.catholic.edu.au](mailto:enrolments@olshkensington.catholic.edu.au)

## WHAT MAKES US SPECIAL

We are preparing our young women for an unknown future and this calls for a future-focused school, one that provides a learning environment that develops faith-filled, adaptive thinkers who influence our society for the greater good.

In an environment of growth and opportunity, our young women are offered dynamic, organic and interconnected learning experiences as we seek out opportunities to partner with industry, agencies and tertiary institutions, so students are engaged in active, authentic, inquiry-based learning experiences.

We are a community proud of our inclusive and nurturing environment. Our young women are not afraid to take risks and grow from their experiences and adventures.

Such bravery will at times bring disappointment and setbacks however, we know you cannot learn without failing, it is in this experience that we develop and grow becoming the best version of ourselves.

This cultivation of a growth mindset in every student, where learners are empowered and learning is personalised, is at the heart of who we are as a community.

We collaborate with students to develop their wellbeing, spirituality, physicality, and emotional and academic intelligence, as our staff aspire to instill within each and every girl a sense of deep worth and Catholic values that will equip them to bravely face the challenges life brings, and act courageously as global citizens.

## BUILDING RESILIENCE

The College has a school-wide focus on creating a culture of independence in academic persistence by nurturing resilience, emotional intelligence and a growth mindset.

We do this by developing students' relational capacities, nurturing their on-task learning and motivating students with strategies that increase their willingness to learn.

Our clear focus is on harnessing a values and character strengths approach to instill students' self-knowledge for future pathways.

There is a commitment to partnership and shared responsibility among staff, students and parents in all aspects of school life.

Our Wellbeing Framework aligns explicitly with our Learning Framework so we holistically enhance students' sense of self worth and dignity as individuals and foster respect for the values and attitudes of others.

Our students learn to love and lead with love in our complex world.



## OUR FIRST PEOPLES

Our Lady of the Sacred Heart College acknowledges the Gadigal People of the Eora Nation People as the Traditional Owners of the land on which our school is placed.

We are inspired and nurtured by the wisdoms, spiritualities and experiences of our First Nations Peoples. Together we work actively for reconciliation, justice, equity and healing.

## VISIT US IN 2022

Our Open Day is on Tuesday 1st March 2022.

Further details can be found on our website and social media platforms.

## QUICK FACTS

- Top 100 school
- Inquiry Based Learning Focus
- Member of the Global Network – New Pedagogies in Deep Learning
- Focus on mastery and developing key competencies to prepare students for the future
- Member of the University of Sydney Stem Teacher Enrichment Program
- Focus on Entrepreneurial skills and partnerships to create authentic learning experiences
- Brand new contemporary learning hubs to support authentic, personalised learning
- Positive education approach to learning utilising the Berry Street Education Model
- Immersion opportunities

### GENDER

Girls

### YEAR RANGE

Yr 7 - 12

### ENROLMENT

823 students

### YEAR 7

150 students  
5 classes

### LANGUAGES

Latin, French & Japanese

### FEES 2022

Available on request

### HSC SUBJECTS

41

### VET

Yes

### UNI OFFERS

80.5%

### CONNECT VIA





# Patrician Brothers' College, Blacktown

Est. 1952

'Christus Regnat'

## KEY INFORMATION

**Address** 100 Flushcombe Rd,  
Blacktown NSW 2148  
**Telephone** 02 8811 0300  
**Website** [patsblacktown.nsw.edu.au](http://patsblacktown.nsw.edu.au)  
**Principal** Frank Chiment  
**Enquiries** Contact school Office for enrolment information  
[patricianbros@parra.catholic.edu.au](mailto:patricianbros@parra.catholic.edu.au)  
**Email**

## WHAT MAKES US SPECIAL

Patrician Brothers' College, Blacktown is a diverse and vibrant learning community with strong foundations in faith development and academic care. As a Patrician community, we strive to see Christ in everyone we meet, and this underpins our emphasis on hospitality and social justice. Patrician Brothers' College, Blacktown is a welcoming environment and celebrates diversity. This is evident through the diverse range of opportunities that are open to students, including a range of sports, debating and public speaking, successful participation in STEM competitions, an extensive offering of VET subjects, and expanding partnerships with local tertiary institutions. This allows students the possibility to graduate with a broad education and a diverse range of qualifications.

The College has a strong service-learning program centred around the Religious Education curriculum and the Patrician Charism that allows our students to grow in their faith. Students are called to put their Faith in Action through programs such as the College Breakfast Program, Vinnies Van Night Patrol, and Special Religious Education Program. Students also grow in faith through our liturgical program, with Mass every week and a range of student ministry programs. This allows students to live their faith as a Eucharistic people.

All of these activities contribute to a holistic program that fosters the spiritual growth and the academic care of each student, allowing them to be the face of Christ in today's world.

## BUILDING RESILIENCE

Patrician Brothers' College Blacktown strives to build resilience in each student. This is achieved through our academic care program. The academic care program is holistic. It incorporates pastoral care and the promotion of academic excellence. Pastoral care is supported through the Student Wellbeing Program that is integrated into each student's timetable, complemented by a range of guest speakers, activities, and community events. The program is designed to support each student and build their resilience and confidence.

The College also builds resilience by promoting academic excellence. This is achieved by challenging each student to strive for their personal best in the classroom. Wherever their starting point, students are constantly supported and encouraged by their teachers to develop their motivation, skills, and capacity to become lifelong learners.

Resilience is also supported through a strong sporting program. The program caters for a number of sports such as rugby league, rugby union, cricket, soccer, basketball, swimming and athletics, including opportunities for elite representation at state and national levels. Through a strong academic care program and a vibrant sporting environment, students at Patrician Brothers' College Blacktown are encouraged to build resilience, which will prepare them for life beyond the school gates.



## OUR FIRST PEOPLES

Patrician Brothers' College, Blacktown acknowledges the Darug Land People as the Traditional Owners of the land on which our school is placed.

We are inspired and nurtured by the wisdoms, spiritualities and experiences of our First Nations Peoples. Together we work actively for reconciliation, justice, equity and healing.

## VISIT US IN 2022

Open Evening:  
23 February, 2022

## QUICK FACTS

- National Schoolboy Cup Rugby League champions 2012 and 2020.
- National winners of the Australian Space Design Competition in 2019.
- Ranked among best HSC results in the Blacktown region.
- Students are awarded a Faith-in-Action Passport.
- We have produced Paralympians, Big Bash Cricketers, A-League Footballers, NRL & AFL players.
- Represented at World Youth Day and Australian Catholic Youth Festivals.
- We employ three Cultural Liaison Officers.
- Major building programs undertaken.
- Diverse curriculum offerings.
- Regular nominations for Encore and Art Express programs for outstanding HSC performances.

### GENDER

Boys

### YEAR RANGE

Yr 7 - 12

### ENROLMENT

1,050 students

### YEAR 7

180 students  
8 classes

### LANGUAGES

Italian

### FEES 2022

Yr 7 \$4,921  
Yr 12 \$6,287  
Includes levies, resource & subject fees

### HSC SUBJECTS

39

### VET

Yes

### UNI OFFERS

62%

### CONNECT VIA







# Santa Sabina College

Est. 1894

'Discerning Scholarship'

## KEY INFORMATION

<b>Address</b>	<b>Year 5 to Year 12:</b> 90 The Boulevard, Strathfield NSW 2135
	<b>Prep to Year 4:</b> 59 The Boulevard, Strathfield NSW 2135
	02 9745 7030
<b>Telephone</b>	ssc.nsw.edu.au
<b>Website</b>	Paulina Skerman
<b>Principal</b>	College Registrar
<b>Enquiries</b>	enrolment@ssc.nsw.edu.au
<b>Email</b>	

## WHAT MAKES US SPECIAL

Established in 1894, Santa Sabina College, a Catholic school in the Dominican tradition, educates students to achieve personal excellence, act with justice and compassion, and embrace the future with an optimistic global vision. Located on eight hectares in Sydney's multicultural inner west, students learn in heritage and modern buildings, spacious playing fields and beautiful gardens. The College delivers a comprehensive curriculum that caters for diverse strengths and goals. As an early childhood (from 6 weeks old) to Year 12 campus, students benefit from the continuity of learning approaches from the early years to Year 12. Inquiry learning in a student-centred learning environment characterises each stage of school life. Teaching in the Primary Years is via the International Baccalaureate Primary Years Programme (IBPYP). Girls are front and centre in Gioia House, our unique program for Years 5 and 6, cocooned in their own area and program. Years 11 and 12 students choose either the International Baccalaureate Diploma Program (IBDP) or NSW HSC. Santa Sabina is the only Catholic primary school in NSW to offer the IBPYP and the only Catholic School in Sydney's inner west offering the IBDP.

The pastoral care of students is integral to our teaching and learning. Outdoor education programs are delivered on our 97-hectare Southern Highlands campus, Tallong. We also offer over 20 sports; several critically acclaimed music and drama ensembles and performance opportunities locally, interstate and globally; public speaking and debating; and the Duke of Edinburgh's International Award. Our motto, Veritas, challenges students to think for themselves, to engage in respectful debates with those who think differently and to reflect on all that they encounter.

## BUILDING RESILIENCE

Students are at the heart of our approach to wellbeing and at the soul of our teaching and learning. When students begin at Santa Sabina College they become part of their House family, helping them build connections and develop friendships across all ages. They grow in both their connections of Homeroom and House as well as through their co-curricular participation and enjoyment of community events. Our Wellbeing Framework is evidence-based and tailored to each stage of the personal, academic, spiritual and physical development of our students. They are known at every stage:

- Students from Prep to Year 6 have their classroom teacher as their advocate and guide for their holistic development.
- Secondary Years 7-12 are organised into vertical homerooms with their Homeroom teacher as their mentor and advocate.

All students have access to counselling services provided by our two in-house clinical psychologists. Our Director of Students and Wellbeing 7-12, Assistant Head of Gioia House and Pastoral Care Coordinator P-4 work together and across the College to help ensure a seamless approach to pastoral care at Santa Sabina College.



## OUR FIRST PEOPLES

Santa Sabina College respectfully acknowledges the Wangal clan of the Dharug people as the traditional custodians of the land on which the College stands.

Our 97-ha outdoor ed campus is in Wodi Wodi country in the NSW Southern Highlands.

## VISIT US IN 2022

We offer tailored discovery tours across both the Primary and Secondary campuses each term. Visit our website for dates and to book.

Or contact the Registrar (tel: 9745 7030) to arrange a Try Day experience.

## QUICK FACTS

- IB World School – IBDP & IBPYP
- Consistently ranked in NSW HSC Top 50
- Gioia House for Years 5 & 6
- 97-ha outdoor ed campus in regional NSW
- Outstanding music including home of SYO
- Integrated Early Education Centre for 6 weeks to 6 years
- 8 hectares of beautiful grounds in Sydney's Inner West
- National STEM award winners
- Winner of 4 Australian Education Awards 2021 Excellence
- Choice of HSC or IB

## GENDER

Co-educational P - Yr 4  
Girls Yr 5 - 12

## YEAR RANGE

P - Yr 12

## ENROLMENT

1,250 students

## YEAR 7

130 students  
5 classes

## LANGUAGES

French, Italian,  
Japanese & Spanish

## FEES 2022

Please visit our website

## HSC SUBJECTS

37 + 23 IBDP

## VET

No

## UNI OFFERS

98%

## CONNECT VIA





# Southern Cross Catholic College

Est. 2010

*'Setting Young People Up For Success - As Individuals, As Learners And Future Employees.'*

## KEY INFORMATION

**Address** 17 Comer St, Burwood  
NSW 2134  
**Telephone** 02 8372 4400  
**Website** [www.sccvc.catholic.edu.au](http://www.sccvc.catholic.edu.au)  
**Principal** Mr Tony Patton  
**Enquiries** Mrs Vivienne Moseley  
**Email** [info@sccvc.catholic.edu.au](mailto:info@sccvc.catholic.edu.au)

## WHAT MAKES US SPECIAL

Southern Cross Catholic College is an innovative Catholic co-educational secondary college with a difference. Students attending the college combine rigorous campus-based learning with real-life, work-based learning.

Students combine studies for senior school qualifications with higher level national qualifications at Certificate II and Certificate III level. Southern Cross students graduate work-ready and with dual qualifications.

The college provides quality applied learning pathways in first class facilities. The focus on applied learning – allowing students to learn by doing – is supported by the college's enterprise department and extensive affiliations with business and industry partners. Our college graduates have been regular finalists and winners of Australian and NSW Training Awards.

The integration of campus-based and work-based learning provides an ideal opportunity for students to flourish and develop valuable employability skills, whilst also encouraging an individual's creativity and passion for Music, Dance, Drama or Musical Theatre through the Performing Arts specialisation.

Tony Patton, Principal.

## BUILDING RESILIENCE

Southern Cross Catholic College - building resilience through the Student Success Program. The aim is for students to be supported and engaged in their learning and to feel happy and safe in the College environment.

The College believes that student formation and learning is best supported through a strong and positive relationship with a significant adult, the Student Success Leader.

In the context of Southern Cross Catholic College as a hope filled community imbued with optimism for what 'can be' for each young person, the College will provide each student with one significant adult contact with whom the student can develop a close relationship and will be an advocate for the student. *I came that they may have life to the full.* John 10:10

In the light of the Gospel message, the Student Success Leader is the person who will know each student in their "Pod" completely and continuously, will care for them, monitor their progress and have the time and authority to take constructive action.

In supporting student learning and wellbeing, the Student Success Leader will collaborate with students to plan and set goals to personalise the learning experience, track progress and support students in achieving their goals.



## OUR FIRST PEOPLES

Southern Cross Catholic College acknowledges the Gadigal People as the Traditional Owners of the land on which our school is placed. We are inspired and nurtured by the wisdoms, spiritualities and experiences of our First Nations Peoples. Together we work actively for reconciliation, justice, equity and healing.

## VISIT US IN 2022

We invite you to tour the college grounds, see general learning areas, specialist facilities and learn more about the wide range of courses available with opportunities for both career and university entry pathways. Visit our website and book a tour, <https://www.sccvc.catholic.edu.au/visit-our-school>

## QUICK FACTS

- Southern Cross Catholic College provides the premier personalised applied learning approach for students seeking a specialised education in trades, technologies, creative industries and the performing arts.
- A range of career and academic pathways leading to direct employment and further education.
- Career pathways, Certificate II and Certificate III courses that may provide credit towards TAFE NSW degrees and select university courses.
- Full time and part time course options to students throughout the Sydney Archdiocese.

### GENDER

Co-educational

### YEAR RANGE

Yr 9 - 12

### ENROLMENT

350 full time and part-time students

### YEAR 9/10

From 2021 enrolling full-time students

### PERFORMING ARTS

Music, Dance, Drama and Musical Theatre

### FEES 2022

Yr 9/10 \$4,448  
Yr 11 \$5,207  
Yr 12 \$4,897

### COURSES

Performing Arts, Industry and University Pathways

### VET

Over 15 specialist courses

### QUALIFICATIONS

Certificates I, II & III with HSC. Apprenticeships & Traineeships available.

### CONNECT VIA







# St Andrews College

Est. 1998

*'Doing More –  
Going Beyond'*

## KEY INFORMATION

<b>Address</b>	<b>Yr 7 - 10 Campus:</b> 116 Quakers Rd, Marayong NSW 2148 <b>Yr 11 - 12 Campus:</b> 50 Breakfast Rd, Marayong NSW 2148 02 9626 4000 <b>Website</b> standrewscmarayong.catholic.edu.au <b>Principal</b> Dr Stephen Kennaugh <b>Enquiries</b> Administration - 02 9626 4000 <b>Email</b> standrewscollege@parra.catholic.edu.au
----------------	--

## WHAT MAKES US SPECIAL

Learning at St Andrews College is focused on the skills and knowledge required for our students to find success as the global leaders of the next generation.

Our students are engaging in inquiry-based learning to develop their communication, critical thinking, creativity and innovation skills across the curriculum.

Students and teachers collaborate to evaluate the legitimacy and accuracy of online content, which is a central part of our students' learning.

The College acceleration program caters to students working beyond their Stage Level.

Through a strong sense of faith and community, the students of St Andrews College are encouraged and guided by staff to be people for others, to develop their interpersonal, problem solving and leadership skills, whilst always conscious of ethical actions and accountability.

By being people for others, doing more and going beyond and through their Faith in Christ, students at St Andrews College have the potential to excel in any aspect of their lives.

## BUILDING RESILIENCE

The College approaches Wellbeing and Learning with a holistic approach, using the SPIRE framework of wellbeing.

There is an emphasis on developing the whole person with a driving focus on Spiritual, Physical, Intellectual, Relational and Emotional wellbeing.

Knowing the learner starts with knowing their strengths, which all staff and students use as a tool for learning.

Each student in the College focuses on their strengths and how to build them in different ways.

Understanding where their strengths lie can help develop areas like resilience. Students are encouraged to evaluate their strengths twice a year and develop strategies to develop strengths that they find difficult.

The College Wellbeing program offers a program that builds on Positive Education from Year 7 up to Year 12.

It is our aim to develop skills necessary to make each student a productive member of our community once they leave school.

Life skills, such as resilience, mental toughness, mindfulness to name a few, are developed through their time at the College.



## OUR FIRST PEOPLES

St Andrews College acknowledges the Darug People as the Traditional Owners of the land on which our school is placed.

We are inspired and nurtured by the wisdoms, spiritualities and experiences of our First Nations Peoples. Together we work actively for reconciliation, justice, equity and healing.

## VISIT US IN 2022

Our College Open Day is on the Tuesday 8th March 2022.

Contact us for tour times and booking details.

## QUICK FACTS

- College's Creative Arts Night (CAN) showcasing Music and Performance
- Business Simulation for Year 10 Business students
- Unity Day to celebrate the diversity of our community
- Sporting and Co-Curricular opportunities for students
- Religious and Spiritual opportunities
- Sister school with Isahaya Commercial High School in Nagasaki, Japan
- Opportunities for students in YCS (Young Christian Students) and Social Justice Groups
- 1:1 iPad / Macbook program across all years
- Transition Program in Year 7 and 10
- Upgraded facilities

## GENDER

Co-educational

## YEAR RANGE

Yr 7 - 12

## ENROLMENT

1,377 students

## YEAR 7

214 students  
7 classes

## LANGUAGES

Japanese

## FEES 2022

Yr 7 \$4,830  
Yr 12 \$5,502

## HSC SUBJECTS

42

## VET

Yes

## UNI OFFERS

70%

## CONNECT VIA





ST PATRICK'S COLLEGE

# St Patrick's College Strathfield

Est. 1928

'Luceat Lux Vestra - Let Your Light Shine'

## KEY INFORMATION

**Address** 2 Edgar St, Strathfield NSW 2135  
**Telephone** 02 9763 1000  
**Website** spc.nsw.edu.au  
**Principal** Dr Vittoria Lavorato  
**Enquiries** Alicia Toogood  
**Email** spc@spc.nsw.edu.au



## WHAT MAKES US SPECIAL

Our mission at St Patrick's College is to provide an excellent education to boys, with the Gospel message being central to everything we do. Our College is built on the legacy of the Christian Brothers and is modelled upon the founding ideals of Blessed Edmund Rice. The College seeks to educate young men who are socially critical and spiritually aware and demonstrate how they can stand with the poor and marginalised with empathy, compassion and empowerment.

An extensive co-curricular program enhances personal growth and the development of responsibility, cooperation and initiative; skills which only serve to complement what takes place in the classroom. In this way we seek to animate our College motto which allows each individual to "Let his Light Shine".

A significant feature of our College community is the sense of belonging that our boys experience, with many strong and lasting friendships formed. Testament to this is the number of Old Boys who remain firmly connected to their alma mater, not only through the Old Boys' Association, but by sending their sons to be educated here.

As we look to the future, we strive to continue to be a 'lighthouse' school for boys' education in Australia. That is, as a College, we wish to stand tall and strong, illuminating our community from within and shining a light over our students to guide them to safe harbour.

## OUR FIRST PEOPLES

We acknowledge the traditional custodians of the land on which St Patrick's College, Strathfield stands, the Wangal clan of the Darug people and recognise that it continues to be sacred to them. We acknowledge the wrongs done to them by newcomers to this land and we seek to be partners with them in righting these wrongs and in living together in peace and harmony.

## VISIT US IN 2022

While the College does not host formal open days, we invite families who have a son registered for the next Year 5 intake to attend a College tour usually in early August. For more information please contact the Enrolments Officer.

## QUICK FACTS

- Proud members of the Edmund Rice Education community
- We offer a holistic education with a varied Co-curricular program
- We promote self-discipline and self-respect within students
- We cater for the differing needs of our students
- We attract, develop and retain quality staff
- Three full-time counsellors support boys and their families
- A strong sense of justice instilled in our students
- We are supported by a strong community network
- Inter-house activities encourage connectedness between different year groups
- Close to Strathfield Station, with buses running directly to the College

### GENDER

Boys

### YEAR RANGE

Yr 5 - 12

### ENROLMENT

1,400 students

### YEAR 7

186 students  
8 classes

### LANGUAGES

Italian

### FEES 2022

Yr 7 \$10,590  
Yr 12 \$12,135

### HSC SUBJECTS

We have 30 HSC Subjects offered in 2022. This equates to 236 Units.

### VET

Yes

### UNI OFFERS

85%

### CONNECT VIA



## BUILDING RESILIENCE

St Patrick's College, Strathfield works closely with students, parents and staff in supporting the overall wellbeing and resilience of our students. With the five dimensions of the College's Wellbeing Framework providing a basis, we promote a climate in which there is mutual respect and acceptance between staff and students regardless of life's daily challenges.

To aid our students in building their understanding of resilience, we have dedicated homeroom and pastoral care periods, counselling services, outdoor education and co-curricular programs. By getting to know the individual, both inside and outside the classroom environment, we endeavour to help our students develop greater self-awareness through knowing and accepting their own strengths and limitations, and by setting goals with realistic expectations.

Whether it's by trying an activity in our co-curricular program or by putting themselves forward for a leadership role, we aim to provide avenues for our students to grow as a person, encouraging them to step out of their comfort zone and take up opportunities afforded to them without guarantee of success. Mandatory involvement in reflection days, retreats and camps, where our students are split from their usual friendship groups, challenge them spiritually, physically, socially and emotionally, further helping to build resilience.







# St Patrick's Marist College, Dundas

Est. 1872

'Esto Fidelis – Be Faithful'

## KEY INFORMATION

<b>Address</b>	171 Kirby St, Dundas NSW 2117
<b>Telephone</b>	02 8841 7900
<b>Website</b>	stpatsdundas.catholic.edu.au
<b>Principal</b>	Mr. Paul Ryan
<b>Enquiries</b>	College Office
<b>Email</b>	stpatsdundas@parra.catholic.edu.au

## WHAT MAKES US SPECIAL

St Patrick's Marist College is a coeducational high school that values the achievements of every individual. The College offers an education in the Marist tradition that is relevant and relational, and immerses students in a culture of participation. There are a variety of extracurricular opportunities on offer across academic, cultural and sporting domains. Every aspect of a student's development is catered for – academic, physical, spiritual and emotional. Students are encouraged in a faith-based environment to become critical thinkers, effective collaborators and skilled communicators, ready to face both challenges and an exciting future. At St Patrick's Marist, we are committed to the future of our students and a forward-thinking approach is at the core of learning and teaching. Students enjoy a well-resourced and spacious campus, student-centred learning, Vocational Educational and Training (VET) options, and an invitational school community. The College is also home to 'Wiyanga', a purpose-built facility that offers students with High Support Needs inclusion in the Catholic schooling system. The contemporary learning spaces are open to all students from across the Diocese who have been diagnosed with moderate intellectual disabilities. The focus of Wiyanga is empowering students and tailoring learning to each student's physical, emotional and educational needs. St Patrick's Marist College is part of a system of Catholic Schools within the Diocese of Parramatta. Our College motto. 'Esto Fidelis' (Be Faithful), reflects our Marist connection to the Holy Mother, Mary. Our College is actively engaged in leading students in the Way of Mary.



## OUR FIRST PEOPLES

St Patrick's Marist College, Dundas acknowledges the Darug people as the Traditional Owners of the land on which our school is built.

We are inspired and nurtured by the wisdom, spirituality and experiences of our First Nations Peoples. Together we work actively for reconciliation, justice, equity and healing.

## VISIT US IN 2022

Our Open Day is Monday 14th March 4.00pm - 6.00 pm.

Please visit our website for more information.

## QUICK FACTS

- Consistently outstanding HSC results and academic growth
- Accelerated opportunities for student learning with proven results
- Debating, Public Speaking and Oratory
- Chess Club
- Students have access to Senior Study Evenings and Junior Homework support
- Audio and Tech Crew to provide opportunities for students with a passion for Entertainment
- Annual College Musical and Drama productions, Music Tuition, Concert Band, and Choir
- Marist Youth Ministry and our Social Justice Chance for Change group
- Representative Sport
- Environment and Art Club for Senior and Junior Students

### GENDER

Co-educational

### YEAR RANGE

Yr 7 - 12

### ENROLMENT

1,100 students

### YEAR 7

195 students  
6 classes

### LANGUAGES

French

### FEES 2022

Please visit our website

### HSC SUBJECTS

35

### VET

Yes

### UNI OFFERS

45%

### CONNECT VIA



## BUILDING RESILIENCE

At St Patrick's Marist College, we are committed to delivering learning experiences that promote resilience, build self-esteem and improve social and emotional competencies. Our framework, 'Connect, Empower and Grow', enhances the wellbeing and resilience of our students through experiences both within and beyond the learning spaces. We connect our young people through faith, collaboration with peers, interdependence with teachers and through partnerships with the wider community. Our young people are empowered through compassion, mutual respect, valuing diversity, encouraging success and promoting student voice and agency. We grow our young people through hope, feeling safe and included, developing a growth mindset and self-awareness. We seek to positively nurture wellbeing in our school community with parents playing a key role in promoting wellbeing in the home. Our students are empowered to develop into optimistic global citizens with strong minds and gentle hearts, capable of articulating their beliefs and worldview in light of the Catholic faith and tradition. At St Patrick's Marist, we encourage our students to develop positive relationships and connection with their peers and community as we recognise that a sense of belonging is key to thriving, building resilience and giving meaning and purpose to life. Our focus is developing the whole person, to become confident and resilient individuals prepared to take their place in this ever-changing world.







# St Paul's Catholic College Greystanes

Est. 1958

*'Many Gifts – One Community'*

## KEY INFORMATION

**Address** 198 Old Prospect Rd, Greystanes NSW 2145  
**Telephone** 02 8868 3700  
**Website** [stpaulsgreystanes.catholic.edu.au](http://stpaulsgreystanes.catholic.edu.au)  
**Principal** Mr Paul Finneran  
**Enquiries** Felicity Cribbin  
**Email** [fcribbin@parra.catholic.edu.au](mailto:fcribbin@parra.catholic.edu.au)

## WHAT MAKES US SPECIAL

Our College motto, "Many Gifts – One Community", reflects our desire to celebrate the achievements of our young men and support them in sharing their gifts within a community that is safe, supportive and affirming.

St Paul's is also characterised by the strong partnership between our students, their families and the College. We have a strong focus on parent engagement and we invite families to be a part of their son's educational journey. Such a partnership is vital in the formation of our young men, who we hope will become active and global citizens, ready to make valuable and positive contributions to the communities into which they will enter.

In a time of great uncertainty, our College community is blessed to have a wonderful social justice, outreach and prayer group called Ekklesia which provides many opportunities for our students to come together in support of not only each other, but also for those who live at the margins. Our community constantly strives to be a community of hope by always being a place of welcome and which is inclusive of all.

Ultimately, we seek to develop resilient, independent and adaptable learners who are capable of achieving their personal best.

"Hope does not disappoint" – St Paul

## BUILDING RESILIENCE

The pandemic has highlighted, more than ever, the need to build resilience within our students and school communities in order to navigate the ever-changing landscape which confronts us in these times.

The connection between wellbeing and learning is an important component in supporting the academic, social, and emotional growth of the students in our care. At St Paul's we cater for a diverse community of needs with a view to ensuring all have access to the very best education possible. In responding to these needs, the College is focused on building active and participatory partnerships with the parents in the community in supporting the endeavours of their sons. However, at St. Paul's Catholic College, we are committed to building the resilience of the students in our care.

To that end, in 2022, the College is working with The Resilience Project by engaging in a school partnership program, through presentations, student curriculum, teacher resources and digital content, to support mental health in the classroom, staffroom and family home. The project focuses on empathy, gratitude, mindfulness and emotional literacy. Ultimately, the program will give our students the opportunity to develop a capacity to articulate how they feel about themselves and about the challenges which will confront them not only through adolescence, but also in their adult lives.



## OUR FIRST PEOPLES

St Paul's Catholic College acknowledges the Darug People as the Traditional Owners of the land on which our school is placed. We are inspired and nurtured by the wisdoms, spiritualities and experiences of our First Nations Peoples. Together we work actively for reconciliation, justice, equity and healing.

## VISIT US IN 2022

Our Open Day is on Sunday 13 March 2022. Complementing Open Day will be Talk & Tours which can be attended by appointment throughout Terms 2 & 3 in 2022.

These Talk & Tours will be held in Week 2, 4, 6, & 8 in Terms 2 & 3. Bookings are essential. Further information is available on the website.

## QUICK FACTS

- St Paul is our founding Patron
- Our optional prayer group attracts at least 50 students every week
- Sport and the inter-school Diocesan competition is popular at the school
- Cross-curricular opportunities abound with chess, public speaking & debating, music and an environmental group
- In 2021, we have an entry into the HSC ArtExpress exhibition
- We are a part of the Our Lady Queen of Peace Parish
- Contemporary learning & teaching
- The College has a large social justice footprint
- Variety of student leadership opportunities
- Strong and vibrant Parents & Friends Association.

### GENDER

Boys

### YEAR RANGE

Yr 7 - 12

### ENROLMENT

845 students

### YEAR 7

160 students  
6 classes

### LANGUAGES

Italian

### FEES 2022

Yr 7 \$4,796  
Yr 12 \$5,606

### HSC SUBJECTS

37

### VET

Yes

### UNI OFFERS

98%

### CONNECT VIA







# St Scholastica's College

Est. 1878

*'A day and boarding school - educating young women for 140 years'*

## KEY INFORMATION

**Address** 4 Avenue Rd, Glebe NSW 2037  
**Telephone** 02 9660 2622  
**Website** [scholastica.nsw.edu.au](http://scholastica.nsw.edu.au)  
**Principal** Mrs Kate Rayment  
**Enquiries** College Enrolments Officer  
**Email** [registrar@scholastica.nsw.edu.au](mailto:registrar@scholastica.nsw.edu.au)

## WHAT MAKES US SPECIAL

Located only 3km from the heart of the CBD in Sydney's Inner West, our day and boarding school – affectionately known as 'Schols' – has been educating young women for more than 140 years. Our spiritual heart lies in seeking Christ through the Good Samaritan, Benedictine charism. It is the heart of the Good Samaritan that breathes life into the College community, creating the warmth that you feel when you walk through the gates.

Academic achievement and personal growth combine in a Schols' education to develop confident young women for a challenging world. The 'whole' girl – body, mind and spirit – are all nourished and students are encouraged, through their faith, to search for meaning and to acquire a sound, moral basis for life.

Our innovative and ambitious STEM programs spark imagination and creativity. For instance, our Years 9 and 10 students have opportunities to work with engineers building a project from concept to fruition, driving a practical interest in STEM studies; senior students may participate in the Stage 6 Engineering and Software Design STEM Program at UTS.

We have accelerated classes in Mathematics (Years 9 – 11) and Studies of Religion II; work with the local primary school delivering a creative catechist program and an Arts-focused Visual Arts Program. In 2020, one student's Extension 2 English work was selected for publication in the Young Writers Showcase 2020, an annual publication of the top HSC Extension 2 English works.

Our boarding community is vibrant and inclusive. For 80 girls in Years 7 to 12, the boarding school is large enough to be interesting and diverse, yet contained enough to be inclusive, warm and personal. In a beautiful and peaceful landscape, boarding offers wonderful experiences.

## BUILDING RESILIENCE

It is difficult to conceive of two years in which there was more dramatic change than in 2020 and 2021. A pandemic, long lockdowns, isolation, no in-class teaching, working and learning from home the new norm; even a second year of change was abrupt and confronting.

Nevertheless, after two difficult years, many Schols girls emerged from their schooling in a pandemic with an appreciation that change presents opportunities to grasp leadership and to build personal resilience.

Demonstrably, St Scholastica's College, its staff and students met every challenge with resilience, adaptation, determination and innovation. Our girls did not resent change; it was an opportunity. They dispensed with the threat to their schooldays, adapted, grasped the technology and refused to let the strictures of a pandemic threaten another year of learning.

A Schols education is holistic producing young women who are well equipped for an ever-changing world.



## OUR FIRST PEOPLES

St Scholastica's College acknowledges the Gadigal people of the Eora Nation on whose ancestral country the College stands.

We are inspired and nurtured by the wisdoms, spiritualities and experiences of our First Nations Peoples. Together we work actively for reconciliation, justice, equity and healing.

## VISIT US IN 2022

We are delighted you are considering St Scholastica's College for your daughter's secondary education. For information about the possibility of visiting our College please call or check our website Open Day page for details.

## QUICK FACTS

- ArtExpress Competition
- Accelerated Mathematics (Years 9-11)
- Catechist Program
- College Orchestra
- da Vinci DeCathlon
- Debating
- Duke of Edinburgh
- Engineering class at UTS
- Immersion programs
- National Art School HSC Program
- Theatre Sports
- Tournament of the Minds

### GENDER

Girls

### YEAR RANGE

Yr 7 - 12

### ENROLMENT

1,030 students

### YEAR 7

180 students  
7 classes

### LANGUAGES

Italian, Japanese,  
Open High School

### FEES 2022

Contact the College

### HSC SUBJECTS

38

### VET

Yes

### UNI OFFERS

87%

### CONNECT VIA





# St Vincent's College

Est. 1858

*'A St Vincent's College graduate is a courageous woman of action'*

## KEY INFORMATION

**Address** Rockwall Cr, Potts Point NSW 2011  
**Telephone** 02 9368 1611  
**Website** stvincents.nsw.edu.au  
**Principal** Anne Fry  
**Enquiries** College Registrar  
**Email** registrar@stvincents.nsw.edu.au

## WHAT MAKES US SPECIAL

As a community our belief in the advantages that can be gained through a quality education, and our work to limit any sense of associated entitlement make us special. Our location in the city provides a unique setting for both our day and boarding students to embrace learning and living in one of the world's great cities.

## BUILDING RESILIENCE

The COVID pandemic has tested the resilience of the global community. The disruption to schooling, the loss of peer networks, the cancellation of many rituals and celebratory milestones were among the extraordinary circumstances that young people had to deal with during 2020/2021.

At St Vincent's College students earn the admiration of their teachers and parents by showing the most amazing resilience. Through application of the strategies they have been taught in the cura personalis program, they were able to prioritise positive thinking, focus on their strengths, use creativity, practise gratitude, discern, be hopeful and find God in the ordinary moments of life.

It is through the implementation of such purposeful behaviour that our students found the resilience to get through the long periods of isolation associated with the pandemic.

The College also, of course, had and used reactive interventions through knowing our students, noticing changes and providing support and encouragement when students' natural reserves of resilience were at their lowest. Building resilience has always been part of our Pastoral and Academic Care program but the challenges of 2020/2021 highlighted just how critical the capacity is to respond and recover after an unexpected trauma or disruption.

The College is committed to preparing students through our holistic care to be "courageous women of action". Courage to do, to dare and to dream of being agents for good is nurtured through academic rigour, extensive co-curricular activities, social justice initiatives, student leadership formation and being immersed in a positive and supportive environment.

The College Boarding program allows for the particular resilience growth and independence created by living away from home. Even our day students who daily navigate their way to school on Sydney's vast public transport system develop a higher sense of resilience than those students who stay in local neighbourhood schools.

Pushing through that initial nervousness pays great dividends as our students graduate with a real sense of having gone to school in the centre of one of the world's great super cities.

We promote resilience not recklessness as there are always well-thought through safety nets underneath all our challenges.



## OUR FIRST PEOPLES

St Vincent's College acknowledges the Gadigal People as the Traditional Owners of the land on which our school is placed.

We are inspired and nurtured by the wisdoms, spiritualities and experiences of our First Nations Peoples. Together we work actively for reconciliation, justice, equity and healing.

## VISIT US IN 2022

We warmly invite you to visit us for a tour on Friday 22 April 2022, please register.

Other tour dates will be confirmed as they are scheduled throughout the year.

## QUICK FACTS

- Specialist Programs
- KAIROS Retreat
- Immersions
- High Potential Enrichment
- Duke of Edinburgh
- Stem-inists
- Environmental Advocacy Group
- Caritas Christi (Social Justice Group)
- St Vincent's De Paul (Vinnies@svc)
- Tournament of the Minds
- Ignation Students' Network

### GENDER

Girls

### YEAR RANGE

Yr 7 - 12

### ENROLMENT

765 students

### YEAR 7

125 students  
5 classes

### LANGUAGES

French & Italian

### FEES 2022

Yr 7 \$19,216  
Yr 12 \$22,332

### HSC SUBJECTS

30

### VET

Yes

### UNI OFFERS

100%

### CONNECT VIA







# Stella Maris College

Est. 1931

*'Inclusive  
Innovative  
Inspiring'*

## KEY INFORMATION

**Address** **Main Campus:**  
52 Eurobin Ave, Manly NSW 2095  
**Senior Campus:**  
270-278 Pittwater Rd, Manly NSW 2095  
02 9977 5144  
**Telephone** stellamaris.nsw.edu.au  
**Website** Elizabeth Carnegie  
**Principal** Peta Sargent  
**Enquiries** registrar@stellamaris.nsw.edu.au  
**Email**

## WHAT MAKES US SPECIAL

Stella Maris College, a school of Good Samaritan Education, is a Catholic girls' college located in Manly. Our Benedictine values of Community, Stewardship, Hospitality, Peace and Justice guide our community and our Good Samaritan heritage impels us to be inclusive and supportive of others.

Our mission is to educate and empower young people to embrace life and learning and to create a community where students are nurtured, encouraged and challenged to fulfil their potential as future leaders making a positive difference in their world.

We offer a broad curriculum with pathways for students in diverse and creative fields, such as Visual Art, Drama, Multimedia, STEM, Design and Technology, as well as traditional subject pathways to the Higher School Certificate.

Our co-curricular program offers students the opportunity to explore their passions with offerings such as Art Club, Stellamatics, Book Club and sports such as swimming, surfing, sailing, rugby, rowing and basketball. We are a champion sporting school with many students proceeding to represent at regional and State level. Our Duke of Edinburgh program is strongly supported by our students and staff over Years 9 to 12.

## BUILDING RESILIENCE

Stella Maris College students and staff made a smooth transition to online learning when faced with lockdown in 2021.

The College set a great example for the students and wider community of building resilience by ensuring continuity of quality education and minimising the impact of COVID-19 during remote learning.

Classroom teachers provided real time lessons and monitored student work using a range of online tools. Learning and Teaching Teams supported all teaching staff to formulate the most effective online strategies and creative approaches to the curriculum that can be achieved at home and still maintain the level of engagement from the students.

Principal Elizabeth Carnegie acknowledged that maintaining regular and familiar routines has helped students to focus on their learning from home. Students were asked to wear uniforms for all online lessons, logging in for pastoral care each morning, before joining online classes with their teachers, which is something welcomed by all of our parents.

The College Wellbeing team checked-in daily with the students to ensure individual support was provided, and their voice was heard.

Stella students demonstrated a great amount of dedication to their learning and have continued to support each other in their learning.



## OUR FIRST PEOPLES

Stella Maris College would like to acknowledge the Aboriginal peoples who were the traditional custodians of the land on which the College is built; those people who called the wetlands of Manly Lagoon their home. They would also like to pay respect to Elders both past and present and extend that respect to all Aboriginal people. May the teaching and learning practices of the College always be respectful of the knowledge born of the Aboriginal custodianship of this land.

## VISIT US IN 2022

Our Open Day is on 16 March 2022, Wednesday, 4pm-7:30pm. Principal's address, Guided tour by students, interactive activities by each department. School tours in Term 2, 3 & 4, 2022. Check school website for more information.

## QUICK FACTS

- 90th anniversary celebrated in 2021
- Over 65+ different subjects offered across Year 7-12
- 25+ sports from beginners to national representation
- 10+ different groups of music, dance and drama ensembles
- Closely located near the iconic beach of Manly
- 50+ Int'l students present at the College providing rich cultures
- 170-year-old Port Jackson fig trees for beautiful outdoor learning spaces
- Three ex-students competed at the Tokyo Olympics
- 15% of staff are former Stella students
- Student Wellbeing Team lead by Deputy Principal comprising of 6 x Head of Year, 2 x school counsellors and one International Student Coordinator

### GENDER

Girls

### YEAR RANGE

Yr 7 - 12

### ENROLMENT

965 students

### YEAR 7

184 students  
7 classes

### LANGUAGES

French, Spanish,  
Italian & Japanese

### FEES 2022

Yr 7 \$14,940  
Yr 12 \$14,940

### HSC SUBJECTS

40+

### VET

Yes

### UNI OFFERS

94%

### CONNECT VIA



## Building Resilience Using Technology – Channelling our students’ newly developed digital communication skills

By Lindsey Davis,  
Integrate AV

Technology use in the classroom had been rapidly increasing well before the COVID-19 global pandemic. Schools were adopting interactive flat panels and portable devices, such as tablets or laptops, in a variety of ways and encouraging their use at home for homework and digital organisation, such as emails, calendars or digital learning management systems.



After two years of relying on technology use at home from a vast range of devices, all needing to be used independently by our youngest students through to our final year secondary and Higher Education students, it is safe to say we have built levels of resilience in using technology we never needed before.

Students, families and teachers became experts in basic troubleshooting of their internet connections, device operation and software use, out of sheer necessity.

"Miss, I can't find the email."

"Check your junk folder or recently deleted folder."

"Found it!"

"Mum, the internet's not working."

"Have you checked the Ethernet cable is properly plugged into the wall and the laptop?"

"Oh yeh!" [click] "It works now!"

"Dad, Zoom's not opening."

"Have you clicked on the little pop up blocked icon?"

"It's ok, it's good now."

And so on.

This resilience and determination to continue with quality teaching and learning regardless should not only be celebrated, but maintained in the classroom and at home, wherever possible. These digital communication skills are what teachers are hoping to achieve with their students through cross curricular capabilities and learning outcomes in key subject areas.

As a High School Technology and Mathematics teacher with four years in the Education and Corporate Technology Industry, I deeply value digital

communication skills. My team needed to deliver the highest quality online professional development to our teachers and schools, and my students needed to learn digital communication, organisation and independent learning skills. The levels of capability my students achieved during their lockdown home learning periods was incredible and I aim to nurture those skills and value them in my classroom teaching as much as possible.

As a Training and Professional Development Specialist with Integrate AV, I work with a fabulous team of technology integration specialists, whose knowledge and skill sets support schools and teachers, in addition to corporate and government organisations, with a range of technology solutions and support services to meet their individual needs.

To support building and maintaining student and teacher levels of resilience, we need to keep channelling their digital communication skills. Here are some suggestions to do exactly that:

- Provide students work via email or your learning management system, which they have to access on a digital device themselves, so they maintain the ability to locate files in a digital space independently.
- Encourage students to take photographs of work using portable devices and upload those photos to your school's LMS or cloud storage so they can access them from home or at school on another device. This is excellent practice for creating digital portfolios of the work they are proud of.
- Create calendar invites and attach classwork to the invite. Encourage students to respond to the calendar invite and download the attachment to access their work.
- Enlist some students as "Tech Support" each lesson or day. These students can support other students in accessing lesson content, connecting to devices and managing the interactive whiteboard content delivery.

- Many organisations developed virtual excursion programs during lockdown, most of which are still available. Book a live virtual excursion through DART Connections <https://dartlearning.org.au/> or liaise directly with organisations and allow students to manage the video conference connection and etiquette during the session.
- Have a day or lesson without any current technology. If your school still has any overhead projectors, see if you can borrow one and teach the way classes were taught 20 years ago. Discuss the skill differences required in using technology in the classroom today and how beneficial it might be for modern living, study and employment.

These are just a few suggestions of ways to continue to develop students' resilience using technology in the classroom and building on their developed skills from their time during home learning.

For more support and guidance on classroom or school technologies or integrated solutions in general, contact the team at Integrate AV on 1800 742 748 and they can provide you with tailored solutions for your needs and to meet your budget.

Lindsey Davis is a Technology Integration Specialist and Technology Teacher at a Sydney High School. She has been in the Education industry for 20 years, including working in the education technology industry delivering and managing teacher professional development. She began her teaching career with Teach First in the UK and moved to Australia 6 years ago. Working with Integrate AV as a Training and Professional Development Specialist, she is keen to support her fellow teachers with their use of technology in the classroom for developing a wide range of skills in our students of all ages.



# BenQ

## INTERACTIVE PANELS

65"

75"

86"

4K  
ULTRA HD



LEARNING SPACES  
TRAINING ROOMS  
CLASSROOMS  
HUDDLE SPACES  
MEETING ROOMS  
BOARD ROOMS



SLEEK DESIGN . COLLABORATIVE WHITEBOARDING  
EZWRITE SOFTWARE . DEVICE COMPATIBILITY  
MULTI-USER COLLABORATION . WIFI CAPABILITY



Wireless  
presentation



Screen  
sharing



Airplay,  
Google Cast,  
MirrorOp



4-way  
split screen



Wireless  
Touchback  
(Windows only)



Easy  
upgrade

# INTEGRATE AV

Unified Communications & Collaboration Technologies



# 1800 742 748

[info@integrateav.com.au](mailto:info@integrateav.com.au)

**235+**  
Primary and Secondary schools  
are now using Enquiry Tracker

# A game changer for schools

## Enquiry to Enrolment... solved.



**The adventure begins**



**EnquiryTracker®**  
[enquirytracker.net](http://enquirytracker.net)